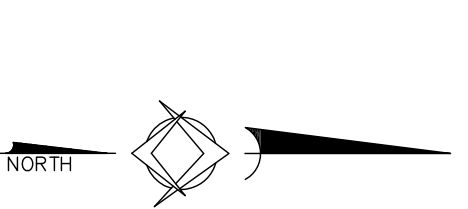
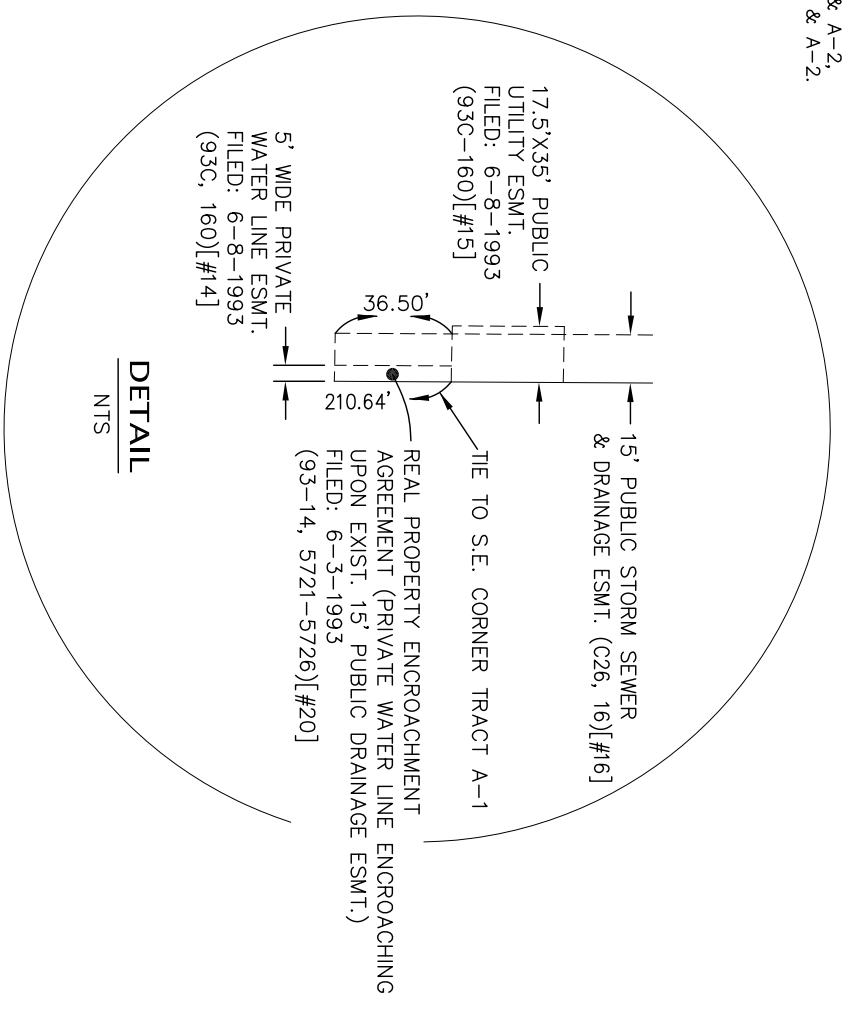


PLAT OF TRACT A-1 & A-2 FEDERAL PLAZA SECTION 1, T. 10 N., R. 3 E., N.M.P.M. CITY OF ALBUQUERQUE BERNALILLO COUNTY, NEW MEXICO JANUARY 2015 SHEET 2 OF 2



SCALE: 1" = 60'
PROJECT # 092014
DRAWN BY: SDR
8-25-14

- MONUMENT LEGEND**
- - FOUND MONUMENT AS NOTED
 - - SET 1/2" REBAR W/PLASTIC CAP STAMPED "P.L.S. 11463"
 - SET PK NAIL W/ WASHER STAMPED "P.L.S. 11463"
 - - CHISELED "X" IN CONCRETE

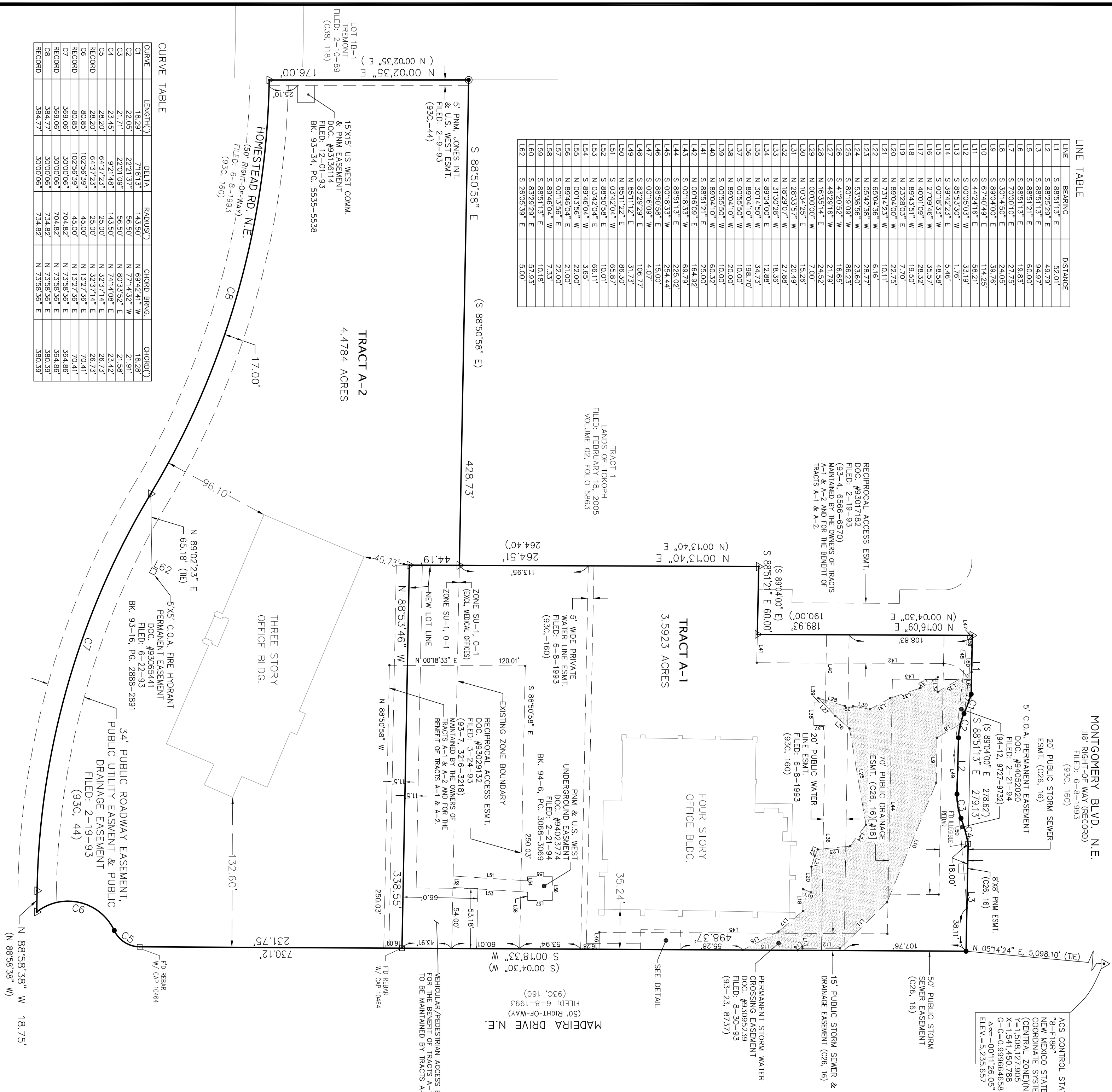


LINE TABLE

LINE	BEARING	DISTANCE
L1	S 88°51'13" E	52.01'
L2	S 88°25'29" E	49.79'
L3	S 88°51'13" E	94.97'
L4	S 88°51'21" E	60.00'
L5	S 88°51'13" E	19.83'
L6	S 70°00'10" E	27.75'
L7	S 50°14'50" E	24.05'
L8	S 89°04'00" E	39.76'
L9	S 67°40'49" E	114.25'
L10	S 44°24'16" E	98.21'
L11	S 00°05'03" W	33.19'
L12	S 65°53'30" W	1.76'
L13	S 59°42'23" E	5.46'
L14	S 00°16'33" W	48.96'
L15	N 27°09'46" W	33.57'
L16	N 40°01'09" W	28.52'
L17	N 89°43'51" W	19.30'
L18	N 23°28'03" E	77.92'
L19	N 89°04'00" W	22.73'
L20	N 23°14'29" W	10.11'
L21	N 69°04'58" W	61.87'
L22	N 53°38'58" W	23.87'
L23	N 53°38'58" W	23.87'
L24	S 60°19'09" W	88.83'
L25	S 41°20'52" W	16.63'
L26	S 41°20'52" W	21.82'
L27	N 46°28'14" E	7.60'
L28	N 02°02'00" W	19.96'
L29	N 02°02'00" W	19.96'
L30	N 02°02'00" W	19.96'
L31	N 28°33'57" W	22.88'
L32	N 18°20'07" W	22.88'
L33	N 31°50'28" W	18.86'
L34	S 89°04'00" E	12.88'
L35	N 30°14'50" W	34.93'
L36	N 89°04'10" W	198.70'
L37	S 00°55'50" W	20.00'
L38	N 89°04'10" W	20.00'
L39	S 00°55'50" W	10.00'
L40	N 89°04'10" W	60.32'
L41	S 88°51'21" E	25.00'
L42	N 00°16'09" E	164.92'
L43	S 00°18'33" W	69.79'
L44	S 88°51'13" E	225.02'
L45	S 00°18'33" W	254.44'
L46	S 88°50'58" E	15.00'
L47	S 00°16'09" W	4.07'
L48	S 83°29'29" E	106.77'
L49	N 85°11'27" E	31.73'
L50	N 85°11'27" E	86.30'
L51	S 03°42'04" W	65.87'
L52	S 88°50'58" E	10.01'
L53	N 03°42'04" E	66.11'
L54	S 89°46'04" W	3.65'
L55	N 00°13'56" W	22.00'
L56	N 89°46'04" E	21.00'
L57	S 00°13'56" E	22.00'
L58	S 89°46'04" W	7.33'
L59	S 88°51'13" E	10.18'
L60	S 83°29'29" E	57.93'
L62	S 26°05'39" E	5.00'

CURVE TABLE

CURVE	LENGTH (')	DELTA	RADIUS (')	CHORD BEARING	CHORD (')
C1	18.29'	71°81'33"	143.50'	N 69°42'41" W	18.28'
C2	22.05'	22°21'37"	56.50'	N 77°14'32" W	21.91'
C3	21.71'	22°01'09"	56.50'	N 80°33'52" E	21.58'
C4	23.45'	9°21'48"	143.50'	N 74°14'08" E	23.42'
C5	28.20'	6°43'27"33"	25.00'	N 32°37'14" E	26.73'
C6	80.85'	102°56'39"	45.00'	N 13°27'36" E	70.41'
C7	369.06'	30°00'06"	704.82'	N 73°58'36" E	364.86'
C8	384.77'	30°00'06"	734.82'	N 73°58'36" E	380.39'
REC'D	384.77'	30°00'06"	734.82'	N 73°58'36" E	380.39'



THE SURVEY OFFICE, LLC
333 LOMAS BLVD., N.E.
ALBUQUERQUE, NEW MEXICO 87102
PHONE: (505) 998-0303
FAX: (505) 998-0306