

ATLANTIC AND PACIFIC ADDITION

FILED AS AN AMENDED AND SUPPLEMENTAL MAP
OF THE ATLANTIC AND PACIFIC ADDITION TO THE
TOWN OF ALBUQUERQUE, N.M. APRIL 24th A.D. 1888.

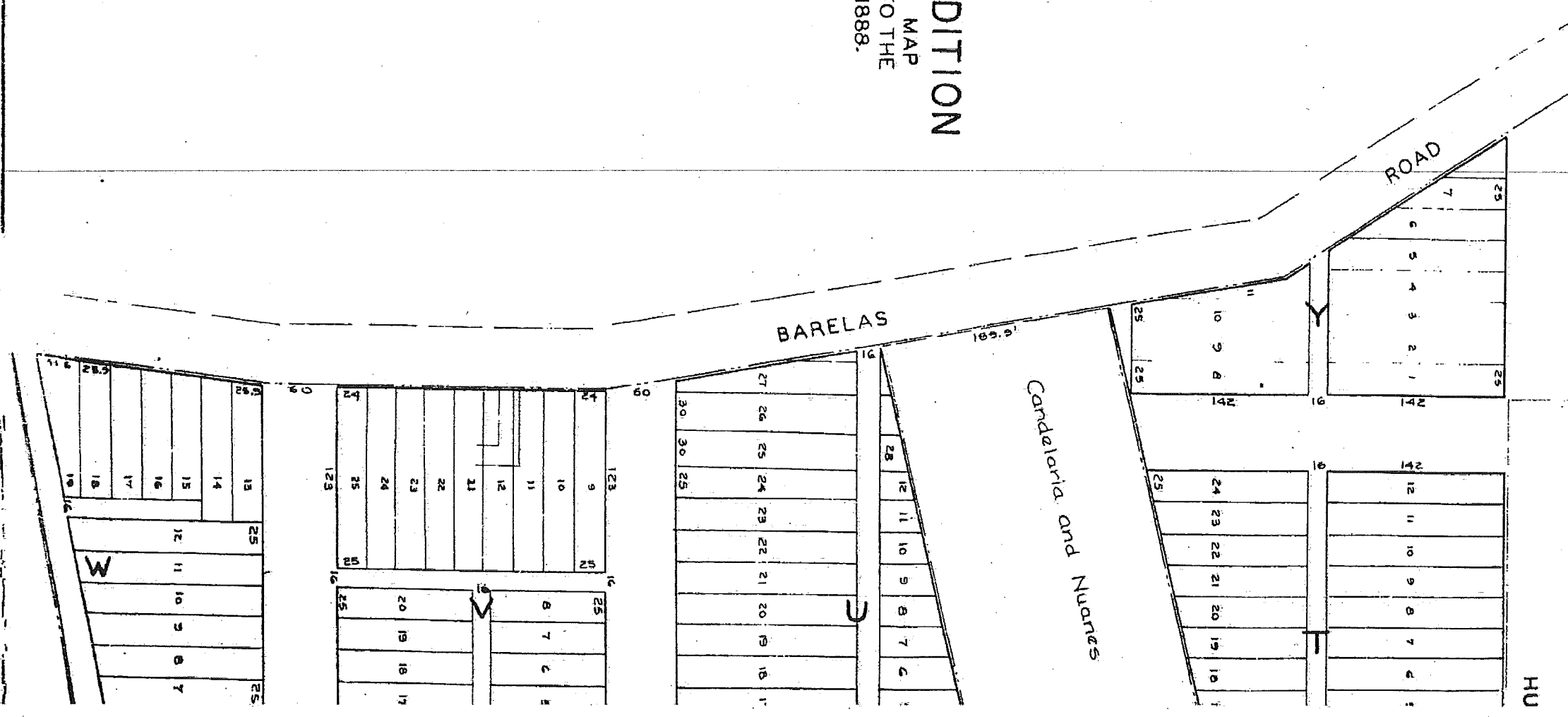
Scale 100 feet equal to 1 inch

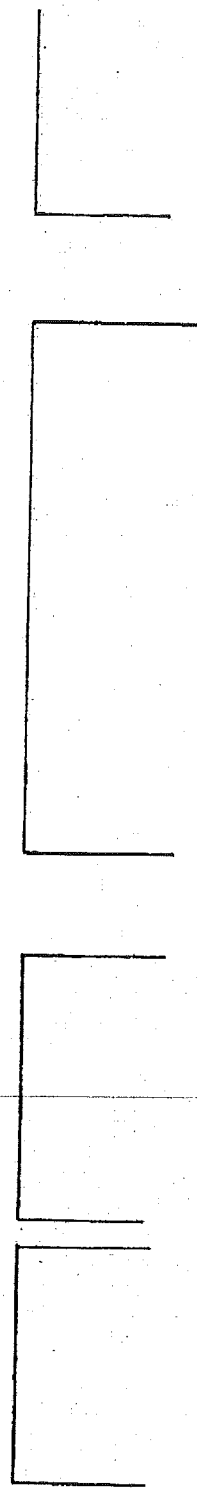
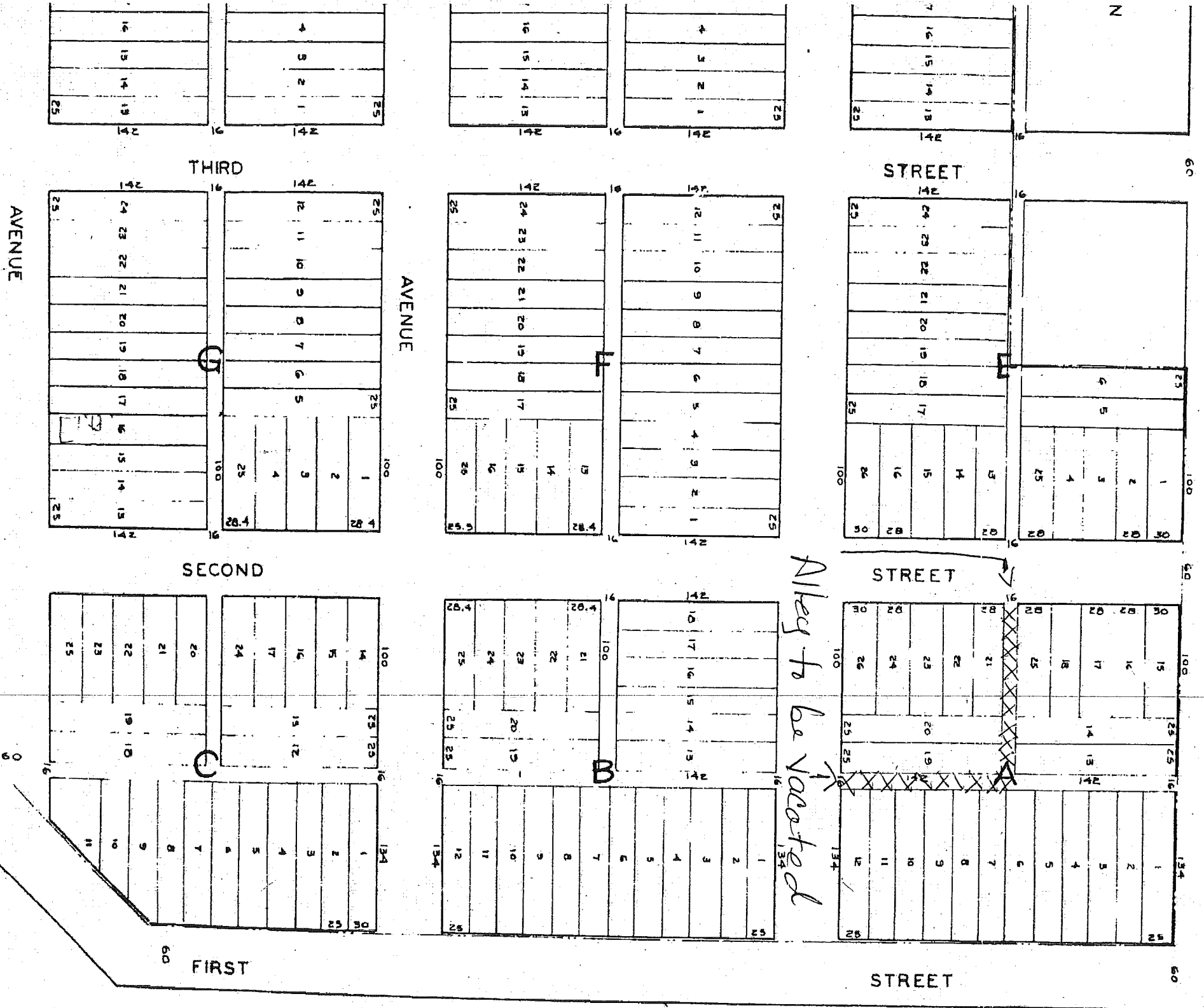
Filed in my office this 24th day of
April A.D. 1888 at 9:40 o'clock:

F. H. KENT
Probate Clerk
by JH. SIMMONS, Deputy

RVICE CO.

REMOVE
COPY





Handwritten signature or initials at the bottom right of the page.