

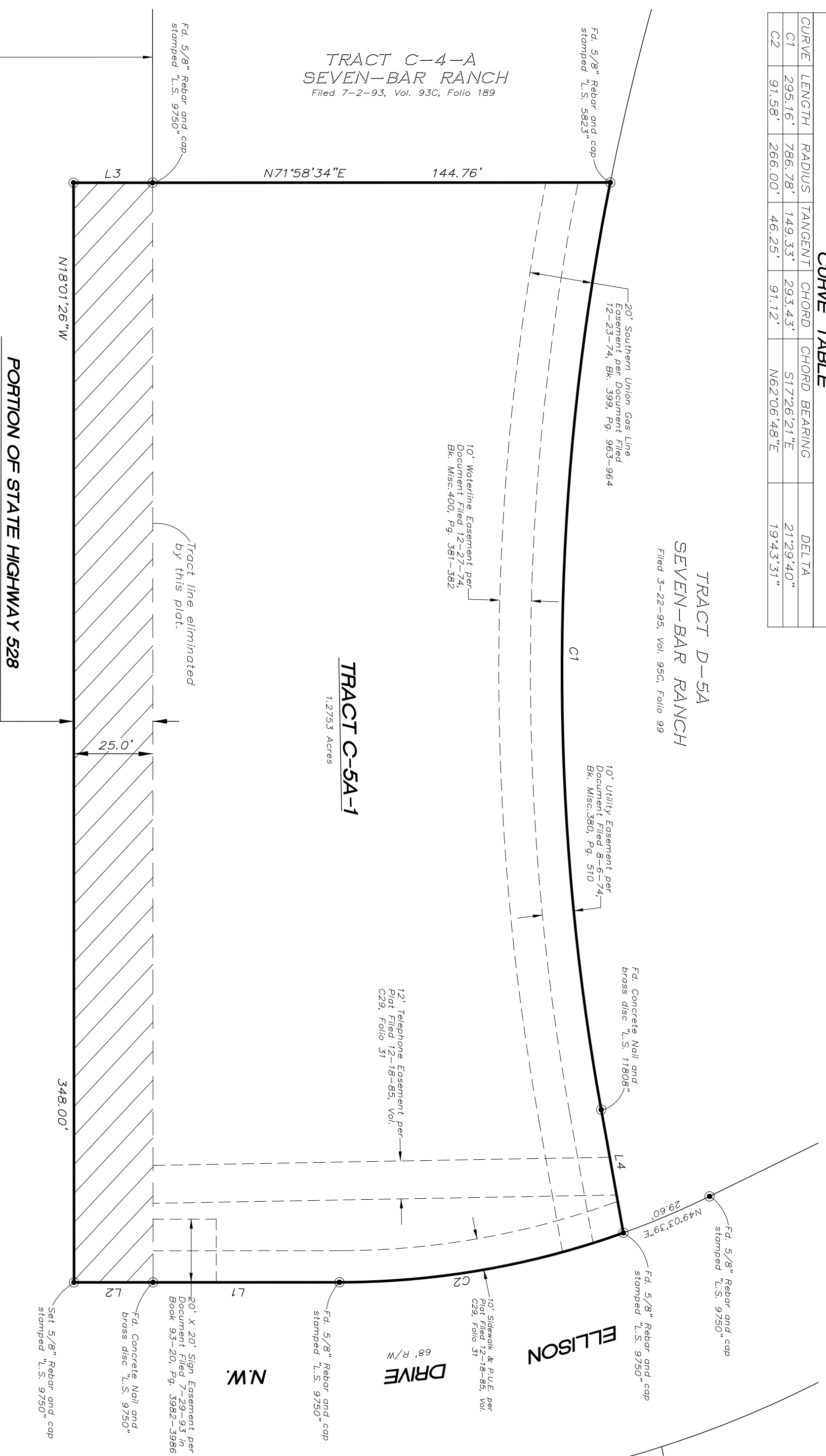
| CURVE TABLE |         |         |         |         |               |           |
|-------------|---------|---------|---------|---------|---------------|-----------|
| CURVE       | LENGTH  | RADIUS  | TANGENT | CHORD   | CHORD BEARING | DELTA     |
| C1          | 295.16' | 786.78' | 149.33' | 293.43' | S17°26'21"E   | 21°29'40" |
| C2          | 91.58'  | 266.00' | 46.25'  | 91.12'  | N62°06'48"E   | 19°43'31" |

TRACT D-5A  
SEVEN-BAR RANCH  
Filed 3-22-95, Vol. 95C, Folio 99

TRACT C-4-A  
SEVEN-BAR RANCH  
Filed 7-2-93, Vol. 93C, Folio 189

TRACT C-5A-1  
1.2753 Acres

Per "New Mexico Department of Transportation Declaration of Vacation and Abandonment" document filed March 2, 2009 as Document No. 2009021685, 0.1997 Ac. (Cross hatched area)



NEW MEXICO STATE HIGHWAY NO. 528

| LINE TABLE |        |             |
|------------|--------|-------------|
| LINE       | LENGTH | BEARING     |
| L1         | 38.97' | S71°58'34"W |
| L2         | 25.00' | S71°58'34"W |
| L3         | 25.00' | N71°58'34"E |
| L4         | 39.60' | S28°11'12"E |

TRACT J-1  
COTTONWOOD CORNERS  
Filed January 13, 2000 in Plat Book 2000C, Page 11

130533.dwg

SKETCH PLAT OF  
TRACT C-5A-1  
SEVEN-BAR RANCH

(BEING A REPLAT OF TRACT C-5A, SEVEN-BAR RANCH AND A VACATED AND ABANDONED PORTION OF NEW MEXICO STATE HIGHWAY NO. 528)

THE TOWN OF ALAMEDA GRANT

IN

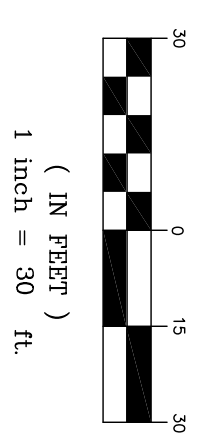
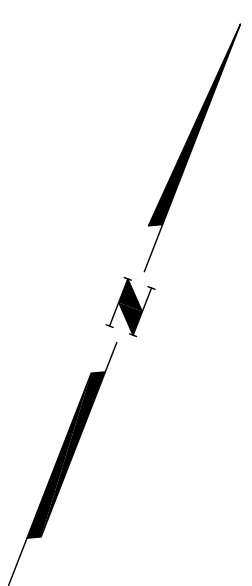
PROJECTED SECTION 5, TOWNSHIP 11 NORTH, RANGE 3 EAST

NEW MEXICO PRINCIPAL MERIDIAN

CITY OF ALBUQUERQUE

BERNALILLO COUNTY, NEW MEXICO

OCTOBER, 2013



TRACT C-6A-1  
SEVEN-BAR RANCH  
Filed August 11, 1989 in Volume C39, Folio 138

TRACT G-2B  
SEVEN-BAR RANCH

SHEET 3 OF 3

**SURV**  **TEK, INC.**

Consulting Surveyors  
9984 Valley View Drive, N.W. Albuquerque, New Mexico 87114  
Phone: 505-897-3366  
Fax: 505-897-3377