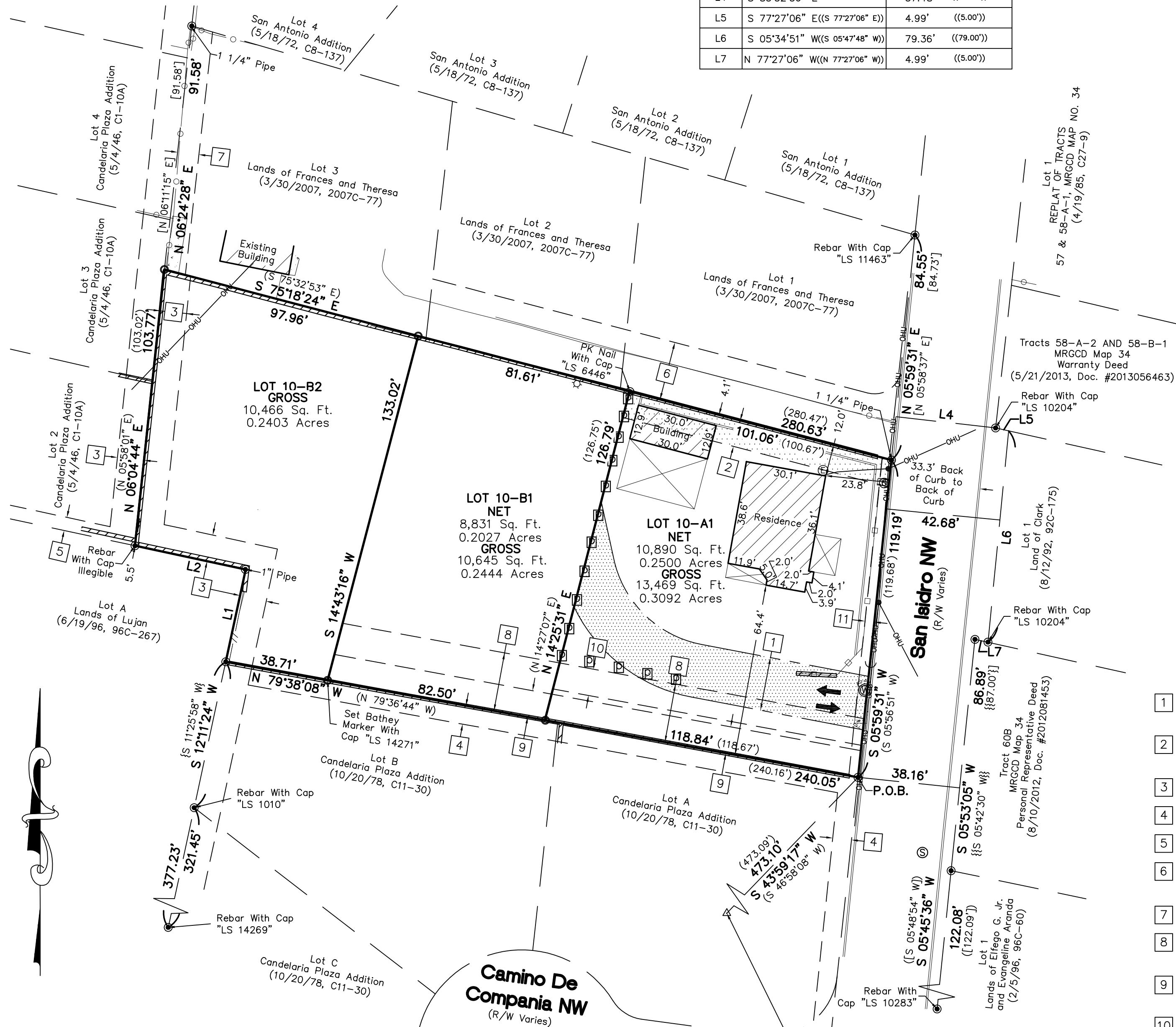


**Site Sketch for
Lots 10-A1, 10-B1 and 10-B2
Block A,
Candelaria Plaza Addition
Being comprised of Lots 10-A and 10-B,
Block A, Candelaria Plaza Addition
Within Projected
Section 6, T 10 N, R 3 E, NMPM, within
the Town of Albuquerque Grant
City of Albuquerque
Bernalillo County, New Mexico
November 2015**

Line Table		
Line #	Direction	Length (ft)
L1	N 12°11'24" E (N 12°17'36" E)	35.27' (35.05')
L2	N 77°52'08" W (N 77°41'48" W)	42.26' (42.12')
L3	S 12°10'24" W (S 11°25'58" W)	55.77' (55.90')
L4	S 83°32'56" E	37.48' (38.00')
L5	S 77°27'06" E ((S 77°27'06" E))	4.99' (5.00')
L6	S 05°34'51" W ((S 05°47'48" W))	79.36' (79.00')
L7	N 77°27'06" W ((N 77°27'06" W))	4.99' (5.00')



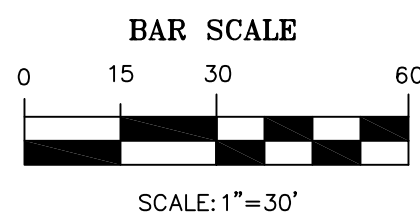
Legend

N 90°00'00" E	MEASURED BEARINGS AND DISTANCES	○	SET BATHEY MARKER "LS 14271" UNLESS OTHERWISE NOTED
(N 90°00'00" E)	RECORD BEARINGS AND DISTANCES (3/4/94, 94C-66)	△	ACS MONUMENT
{N 90°00'00" E}	RECORD BEARINGS AND DISTANCES (10/20/78, C14-30)	⊠	COVERED AREA
[N 90°00'00" E]	RECORD BEARINGS AND DISTANCES (3/30/07, 2007C-77)	▤	CONCRETE
((N 90°00'00" E))	RECORD BEARINGS AND DISTANCES (8/12/92, 92C-175)	—//—	WOOD FENCE
{{N 90°00'00" E}}	RECORD BEARINGS AND DISTANCES (8/10/12, DOC. NO. 2012081453)	—□—	METAL FENCE
{(N 90°00'00" E)}	RECORD BEARINGS AND DISTANCES (2/5/96, 96C-60)	▨	BLOCK WALL
●	FOUND 1/2" REBAR, UNLESS MARKED OTHERWISE	○—○	CHAINLINK FENCE
		—OHU—	OVERHEAD UTILITY LINE
		•	UTILITY POLE
		⊙	ELECTRIC METER
		⊕	GAS METER
		⊗	WATER METER
		⊙	SANITARY SEWER MANHOLE
		↔	CURB CUT/INDICATION OF ACCESS TO ROADWAY
		▨	EASEMENT TO BE VACATED WITH THE FILING OF THE PLAT

Easement Notes

- 1 EXISTING 20' PRIVATE ACCESS EASEMENT (3/4/94, 94C-66), TO BE VACATED BY THE FILING OF THIS PLAT, SHOWN HEREON AS [Symbol].
- 2 EXISTING 10' PRIVATE SANITARY SEWER AND WATER EASEMENT (3/4/94, 94C-66), TO BE VACATED BY THE FILING OF THIS PLAT, SHOWN HEREON AS [Symbol].
- 3 EXISTING 10' IRRIGATION DITCH AND UTILITY EASEMENT (5/4/46, C1-10A)
- 4 EXISTING 7' UTILITY EASEMENT (10/20/78, C14-30)
- 5 EXISTING 5' IRRIGATION DITCH AND UTILITY EASEMENT (5/4/46, C1-10A)
- 6 EXISTING 22' PRIVATE ACCESS, WATER, SANITARY SEWER AND PUBLIC UTILITY EASEMENT (3/30/2007, 2007C-77)
- 7 EXISTING 8' DITCH EASEMENT (3/30/07, 2007C-77)
- 8 22' PRIVATE ACCESS AND PRIVATE DRAINAGE EASEMENT BENEFITING LOTS 10-A1, 10-B1 AND 10-B2, GRANTED WITH THE FILING OF THIS PLAT, TO BE MAINTAINED BY THE OWNERS THEREOF.
- 9 10' PRIVATE WATER AND SEWER SERVICE EASEMENT BENEFITING LOT 10-B2, GRANTED WITH THE FILING OF THIS PLAT, TO BE MAINTAINED BY THE OWNERS OF LOT 10-B2.
- 10 10' PRIVATE WATER AND SEWER SERVICE EASEMENT BENEFITING LOT 10-B1, GRANTED WITH THE FILING OF THIS PLAT, TO BE MAINTAINED BY THE OWNERS OF LOT 10-B1.
- 11 3.5' PUBLIC SIDEWALK EASEMENT GRANTED WITH THE FILING OF THIS PLAT.

ACS Monument " 6-G13AR "
NAD 1983 CENTRAL ZONE
X=1515743.949
Y=1500719.134
Z=N/A (NAVD 1988)
G-G=0.999684045
Mapping Angle=-00°14'23.60"



CARTESIAN SURVEYS INC.
P.O. BOX 44414 RIO RANCHO, N.M. 87174
Phone (505) 896-3050 Fax (505) 891-0244