

Site Sketch for Lots 22-A-1, Block 3 Emil Mann Addition

Being Comprised of

**Lots 22-A and 23-A, Block 3, Emil Mann Addition
Within Section 30, Township 10 North,
Range 4 East, New Mexico Principal Meridian**

**City of Albuquerque
Bernalillo County, New Mexico
August 2016**

ACS Monument " 7-K19 "
NAD 1983 CENTRAL ZONE
X=1545165.941
Y=1483044.082
Z=5325.987 (NAVD 1988)
G-G=0.999659513
Mapping Angle=-0°10'58.61"

Legend

N 90°00'00" E (N 90°00'00" E)	MEASURED BEARING AND DISTANCES RECORD BEARINGS AND DISTANCES PER PLAT OF RECORD (07/18/44, D-78)
●	FOUND AND USED MONUMENT MARKED AS INDICATED
○	SET MONUMENT, MARKED AS INDICATED
.....	LOT LINES BEING ELIMINATED BY THE FILING OF THIS PLAT
	COVERED AREA
	CONCRETE
	BLOCK WALL
	METAL FENCE
	CHAINLINK FENCE
●	UTILITY POLE
-OHU-	OVERHEAD UTILITY LINE
⊕	ANCHOR
-//-	WOOD FENCE
	FIRE HYDRANT
	WATER METER
	ELECTRIC METER
	GAS METER

ACS Monument " 5-K20 "
NAD 1983 CENTRAL ZONE
X=1553256.684
Y=1482001.249
Z=5429.995 (NAVD 1988)
G-G=0.999652832
Mapping Angle=-0°10'02.59"

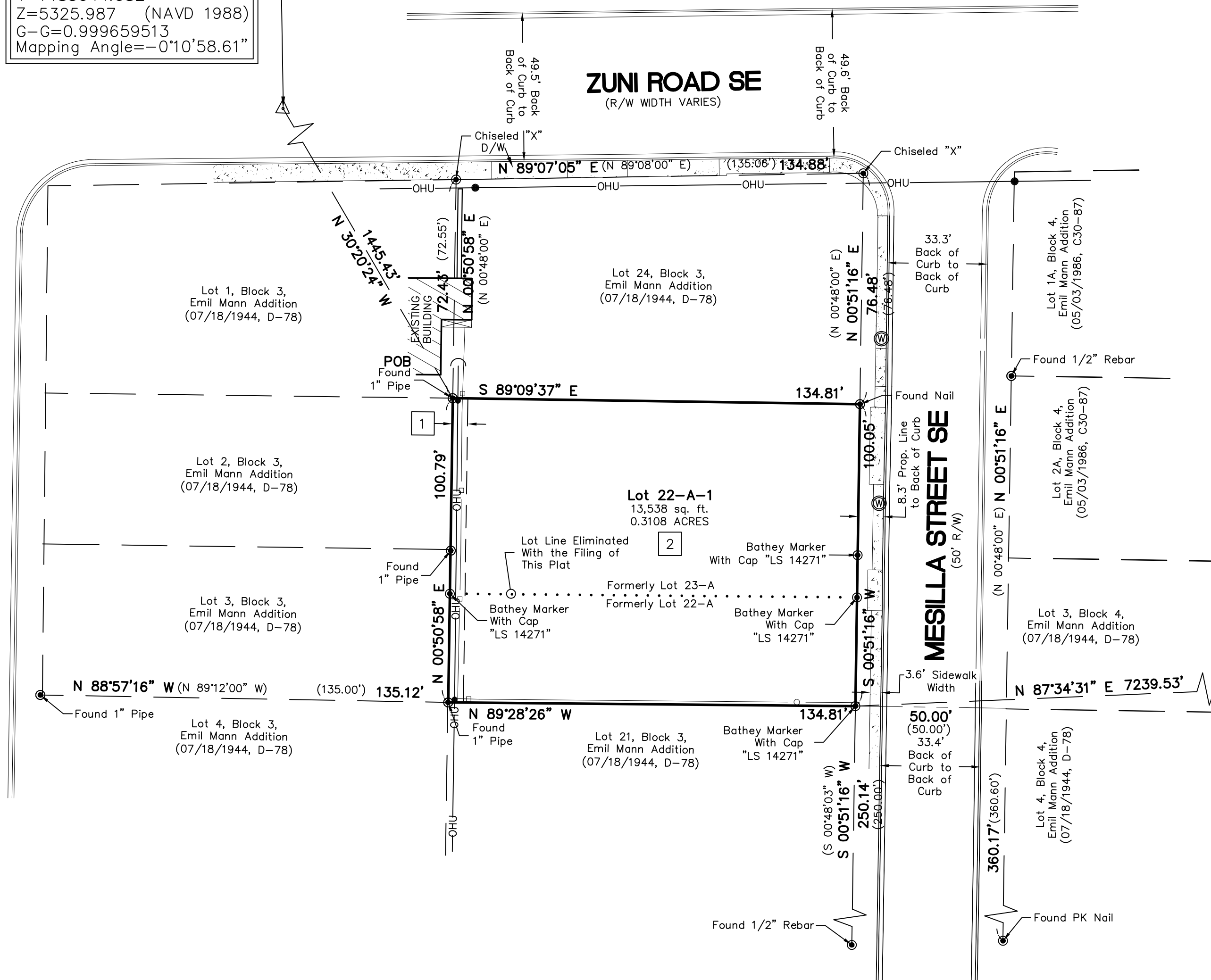
Easement Notes

- 1 5' P.U.E. GRANTED WITH THE FILING OF THIS PLAT.
- 2 CROSS LOT DRAINAGE AND PARKING EASEMENT, BENEFITING LOTS 22-A AND 23-A, TO BE MAINTAINED BY OWNERS OF SAID LOTS.

CHAMA STREET SE
(50' R/W)

MESILLA STREET SE
(50' R/W)

ZUNI ROAD SE
(R/W WIDTH VARIES)



GRAPHIC SCALE



(IN FEET)
1 inch = 30 ft.