

Easement Notes

- 1 10' UTILITY EASEMENT (11/25/53, BK. D-261, PG. 417) SHOWN HEREON AS [Symbol]
- 2 10' UTILITY EASEMENT (11/25/53, BK. D-261, PG. 423) SHOWN HEREON AS [Symbol]
- 3 10' UTILITY EASEMENT (11/25/53, BK. D-261, PG. 323)
- 4 7' PUBLIC ROADWAY AND PUBLIC SANITARY SEWER, STORM, SEWER, WATER AND UTILITY EASEMENT (7/27/2004, 2004C-214)

Easement Notes (Cont'd)

- 5 RECIPROCAL ACCESS AND MAINTENANCE EASEMENT BENEFITING LOT A, LANDS OF FOURTH STREET PARTNERS, WIDTH VARIES-SCALED IN FROM PLAT FILED (7/27/2004, 2004C-214)
- 6 10' RECIPROCAL ACCESS, MAINTENANCE AND UNDERGROUND UTILITY EASEMENT BENEFITING LOT B, LANDS OF FOURTH STREET PARTNERS (7/27/2004, 2004C-214)
- 7 PUBLIC ROADWAY, TURN AROUND EASEMENT (7/27/2004, 2004C-214)



Zone Atlas Page G-14-Z

Sketch Plat
for
Tract 1-A, Block 1,
Belmont Place

Being comprised of Lots 1-7, Lots 16-22 and Vacated Portions of a 16' Alley within Block 1, Belmont Place, Within Projected Section 5, T 10 N, R 3 E, NMPM, within the Town of Albuquerque Grant City of Albuquerque Bernalillo County, New Mexico July 2015

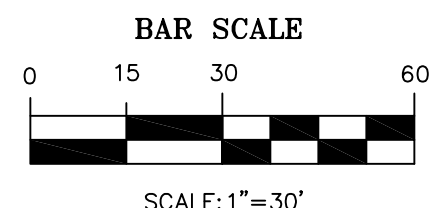
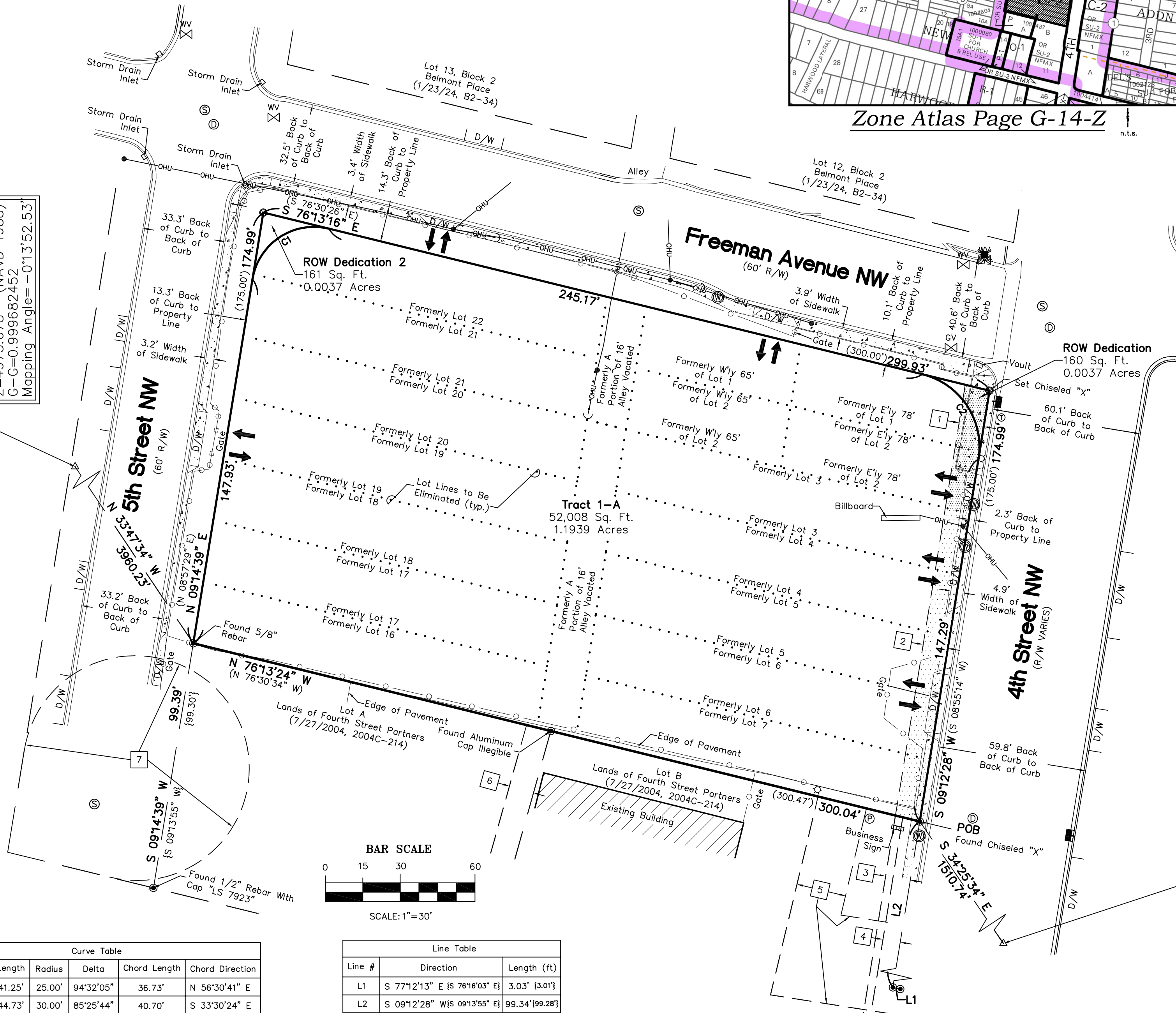
Purpose of Plat

- 1. ELIMINATE INTERIOR LOT LINES AS SHOWN HEREON.
- 2. DEDICATE RIGHT-OF-WAYS.

Legend

N 90°00'00" E	MEASURED BEARINGS AND DISTANCES
(N 90°00'00" E)	RECORD BEARINGS AND DISTANCES (1/23/24, B2-34)
{N 90°00'00" E}	RECORD BEARINGS AND DISTANCES (7/27/2004, 2004C-214)
[Symbol]	FOUND MONUMENT AS INDICATED
[Symbol]	SET BATHEY MARKER "LS 14271" UNLESS OTHERWISE NOTED
[Symbol]	CONCRETE
[Symbol]	METAL FENCE
[Symbol]	CHAINLINK FENCE
[Symbol]	OVERHEAD UTILITY LINE
[Symbol]	UTILITY POLE
[Symbol]	ANCHOR
[Symbol]	LIGHT POLE
[Symbol]	GAS VALVE
[Symbol]	PROPANE TANK
[Symbol]	WATER VALVE
[Symbol]	WATER METER
[Symbol]	SANITARY SEWER MANHOLE
[Symbol]	STORM DRAIN MANHOLE
[Symbol]	STORM DRAIN INLET
[Symbol]	SIGN
[Symbol]	CURB CUT/INDICATION OF ACCESS TO ROADWAY
[Symbol]	DRIVEWAY
[Symbol]	FIRE HYDRANT
[Symbol]	LOT LINES TO BE ELIMINATED WITH THE FILING OF THIS PLAT

ACS Monument "DOUGLAS"
NAD 1983 CENTRAL ZONE
X=1505417.495
Y=1520286.421
Z=4975.078 (NAVD 1988)
G-G=0.999682452
Mapping Angle= -01°3'52.53"



Curve #	Length	Radius	Delta	Chord Length	Chord Direction
C1	41.25'	25.00'	94°32'05"	36.73'	N 56°30'41" E
C2	44.73'	30.00'	85°25'44"	40.70'	S 33°30'24" E

Line #	Direction	Length (ft)
L1	S 77°12'13" E {S 76°16'03" E}	3.03' {3.01'}
L2	S 09°12'28" W {S 09°13'55" E}	99.34' {99.28'}

ACS Monument "STA-NM47-10"
NAD 1983 CENTRAL ZONE
X=1500810.208
Y=1523633.488
Z=4970.252 (NAVD 1988)
G-G=0.99968177
Mapping Angle= -00°13'28.96"

CARTESIAN SURVEYS INC.
P.O. BOX 44414 RIO RANCHO, N.M. 87174
Phone (505) 896-3050 Fax (505) 891-0244