

Sketch Plat for Lot 1A, Block 6, Skyline Heights

Being Comprised of
Lots 1, 2, 9, 10 and the W'ly half
of Lots 3 and 8, Block 6, and Lots 4 and 5
Block 5, Skyline Heights
Together with a Portions of the Vacated
S. Ek Street
City of Albuquerque
Bernalillo County, New Mexico
March 2016

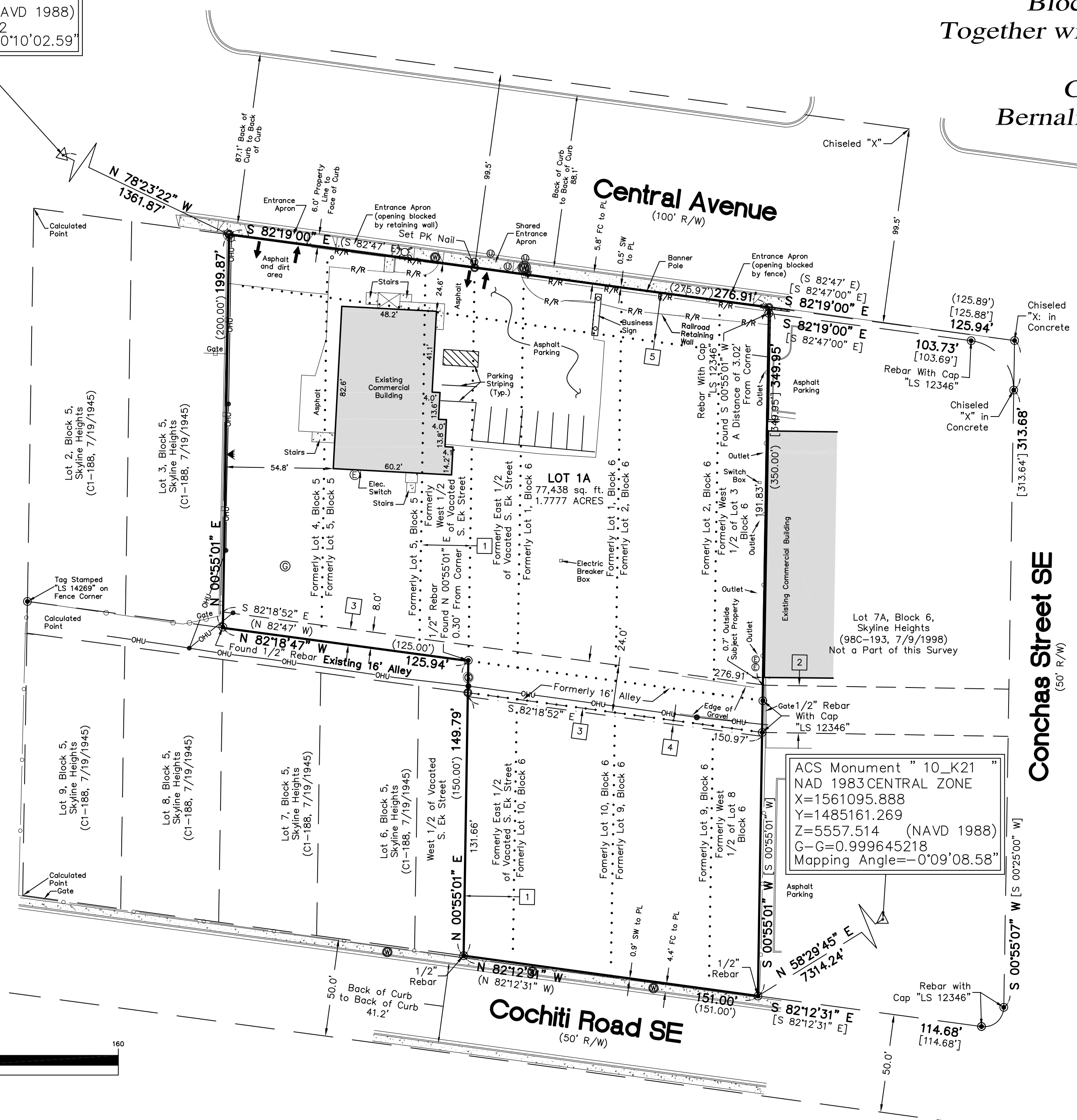
LINE TABLE		
LINE	LENGTH	BEARING
L1	25.23' [25.20']	S 00°55'07" W [S 00°55'07" W]
L2	16.12'	N 00°55'01" E

CURVE TABLE					
CURVE	LENGTH	RADIUS	DELTA	CHORD	CHORD BEARING
C1	36.32' [36.30']	25.00'	25.00'	83'14'07"	33.21' N 40°41'56" W
C2	16.91' [16.89']	10.00'	10.00'	96°52'21"	14.96' N 49°21'18" E

ACS Monument " 5_K20 "
NAD 1983 CENTRAL ZONE
X=1553259.684
Y=1482001.249
Z=5429.995 (NAVD 1988)
G-G=0.999652832
Mapping Angle=-0°10'02.59"

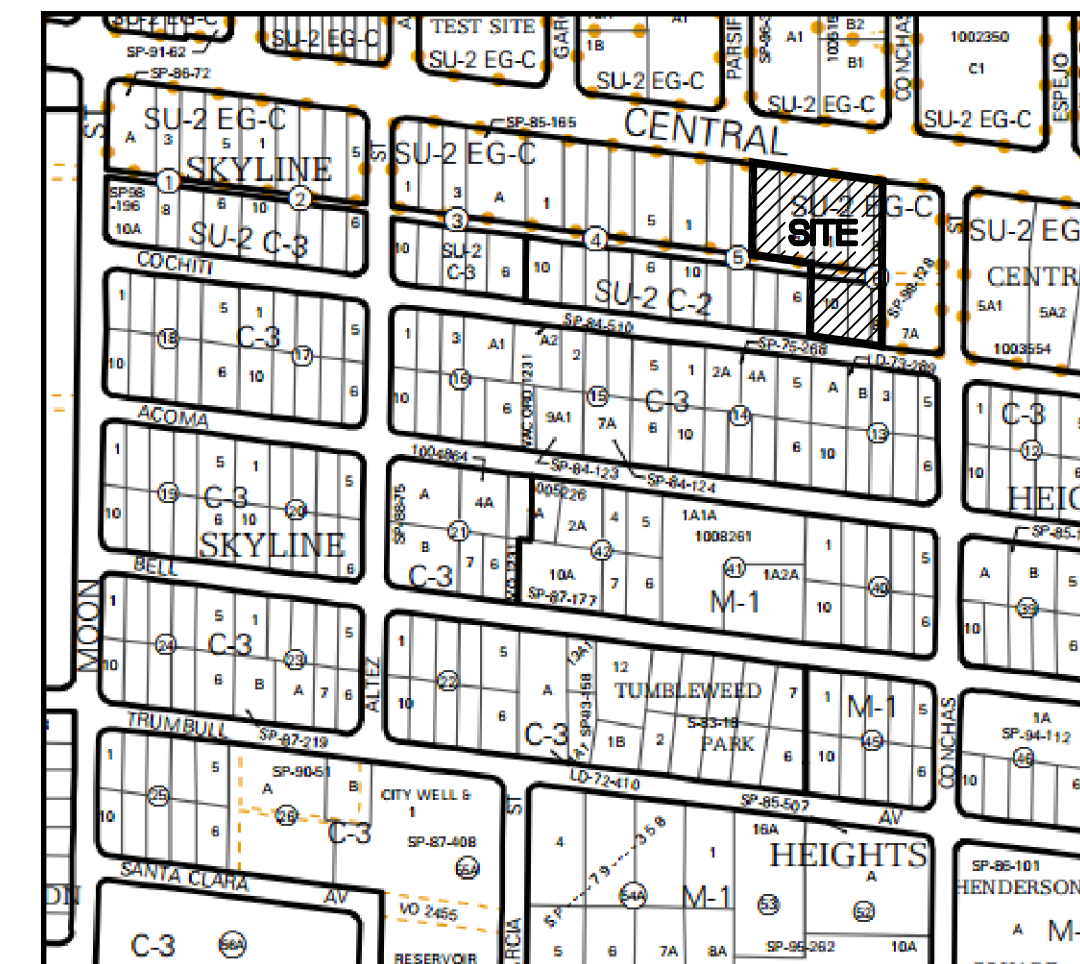
Legend

- N 90°00'00" E MEASURED BEARING AND DISTANCES
- (N 90°00'00" E) RECORD BEARINGS AND DISTANCES PER PLAT OF RECORD (C1-188, 7/19/45)
- [N 90°00'00" E] RECORD BEARINGS AND DISTANCES PER PLAT OF LOT 7A, BLOCK 6, SKYLINE HEIGHTS (98C-193, 7/9/98)
- FOUND MONUMENT MARKED AS INDICATED
- SET BATHY MARKER WITH CAP "LS 14271" UNLESS MARKED OTHERWISE
- TRANSFORMER
- ⊙ ELECTRIC METER
- ⊙ MANHOLE
- METAL FENCE
- CHAIN LINK FENCE
- ▨ BLOCK WALL
- R/R- RAILROAD TIES
- CONCRETE
- ⊙ GAS METER
- UTILITY PEDESTAL
- ☆ LIGHT POST
- OHU- OVERHEAD UTILITY LINES
- ⊙ WATER METER
- ⊙ TELEPHONE MANHOLE
- ⊙ UTILITY POLE
- ⋯ LOT LINE ELIMINATED
- ↕ CURB CUT/INDICATION OF ACCESS TO ROADWAY
- ⊙ FIRE HYDRANT



Easement Notes

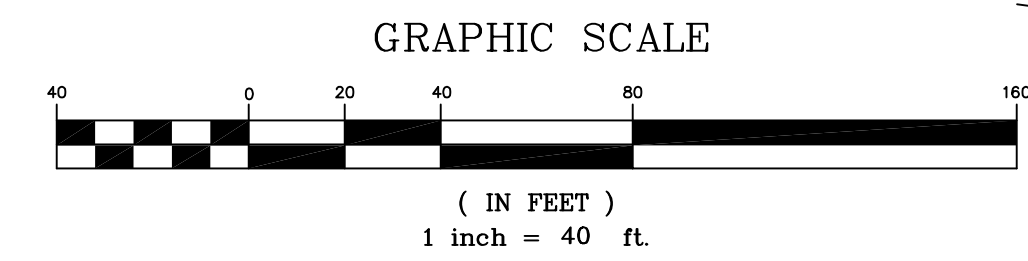
- 1 25' UTILITY EASEMENT RESERVED BY THE CITY OF ALBUQUERQUE IN PLACE OF VACATED ROADWAY (VACATED BY THE FILING OF THIS PLAT)
- 2 EXISTING 24' PUBLIC ACCESS EASEMENT (7/9/98, 98C-193)
- 3 PUBLIC ACCESS, UTILITY AND SANITARY SEWER EASEMENT GRANTED WITH THE FILING OF THIS PLAT. SURFACE TO BE MAINTAINED BY THE OWNER OF LOT 1A.
- 4 2' PUBLIC UTILITY EASEMENT GRANTED WITH THE FILING OF THIS PLAT
- 5 EXISTING 25' PLAT SETBACK LINE, ELIMINATED WITH THE FILING OF THIS PLAT



Zone Atlas Page L-20-Z

CARTESIAN SURVEYS INC.

P.O. BOX 44414 RIO RANCHO, N.M. 87174
Phone (505) 896-3050 Fax (505) 891-0244



ACS Monument " 10_K21 "
NAD 1983 CENTRAL ZONE
X=1561095.888
Y=1485161.269
Z=5557.514 (NAVD 1988)
G-G=0.999645218
Mapping Angle=-0°09'08.58"