

# Legend

N 90°00'00" E (N 90°00'00" E)	MEASURED BEARING AND DISTANCES RECORD BEARINGS AND DISTANCES PER PLAT OF RECORD (C1-188, 7/19/45)		BLOCK WALL
[N 90°00'00" E]	RECORD BEARINGS AND DISTANCES PER PLAT OF LOT 7A, BLOCK 6, SKYLINE HEIGHTS (98C-193, 7/9/98)		RAILROAD TIES
	FOUND AS INDICATED		CONCRETE
	SET BATHEY MARKER "LS 14271"		GAS METER
	TRANSFORMER		UTILITY PEDESTAL
	ELECTRIC METER		LIGHT POST
	MANHOLE		OVERHEAD UTILITY LINES
	METAL FENCE		WATER METER
	CHAIN LINK FENCE		TELEPHONE MANHOLE
			UTILITY POLE

LINE TABLE		
LINE	LENGTH	BEARING
L1	25.23' [25.20']	S 00°55'07" W [S 00°55'07" W]
L2	16.12'	N 00°55'01" E

CURVE TABLE					
CURVE	LENGTH	RADIUS	DELTA	CHORD	CHORD BEARING
C1	36.32' [36.30']	25.00'	25.00'	33.21'	N 40°41'56" W
C2	16.91' [16.89']	10.00'	10.00'	14.96'	N 49°21'18" E

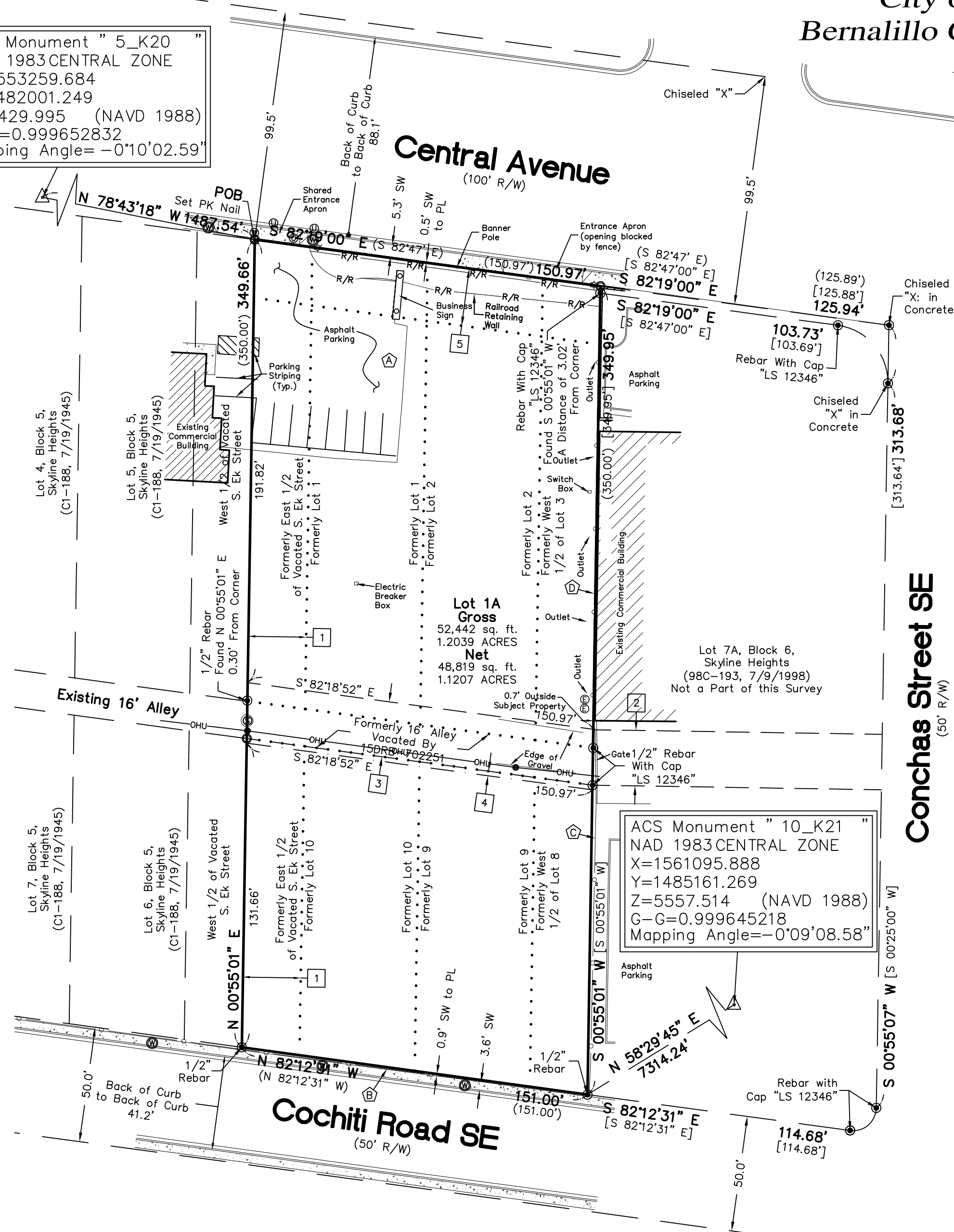
# Plat for Lot 1A, Block 6, Skyline Heights

Being Comprised of

Lots 1, 2, 9, 10 and the W'ly half of Lots 3 and 8, Block 6, Skyline Heights Together with a Portion of the E'ly half of Vacated S. Ek Street and a Portion of Vacated Alley

City of Albuquerque  
Bernalillo County, New Mexico  
April 2106

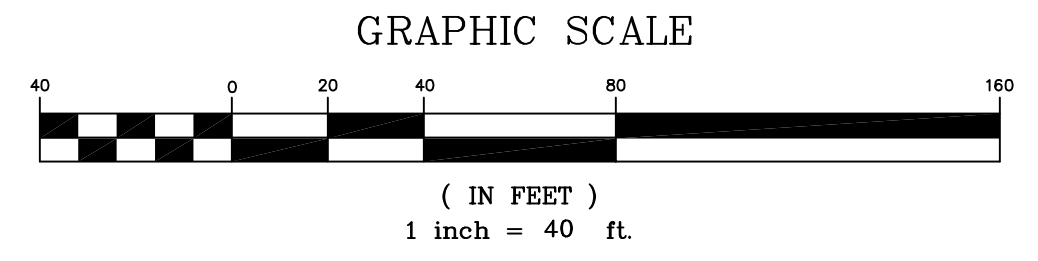
ACS Monument " 5\_K20 "  
NAD 1983 CENTRAL ZONE  
X=1553259.684  
Y=1482001.249  
Z=5429.995 (NAVD 1988)  
G-G=0.999652832  
Mapping Angle=-0°10'02.59"



## Easement Notes

- 25' UTILITY EASEMENT RESERVED BY THE CITY OF ALBUQUERQUE IN PLACE OF VACATED ROADWAY (VACATED BY THE FILING OF THIS PLAT)
- EXISTING 24' PUBLIC ACCESS EASEMENT (7/9/98, 98C-193)
- 24' PUBLIC ACCESS, UTILITY AND SANITARY SEWER EASEMENT GRANTED WITH THE FILING OF THIS PLAT. SURFACE TO BE MAINTAINED BY THE OWNER OF LOT 1-A.
- 2' PUBLIC UTILITY EASEMENT GRANTED WITH THE FILING OF THIS PLAT
- EXISTING 25' PLAT SETBACK LINE (7/19/45, C1-188) ELIMINATED WITH THE FILING OF THIS PLAT

ACS Monument " 10\_K21 "  
NAD 1983 CENTRAL ZONE  
X=1561095.888  
Y=1485161.269  
Z=5557.514 (NAVD 1988)  
G-G=0.999645218  
Mapping Angle=-0°09'08.58"



CARTESIAN SURVEYS INC.

P.O. BOX 44414 RIO RANCHO, N.M. 87174  
Phone (505) 896-3050 Fax (505) 891-0244