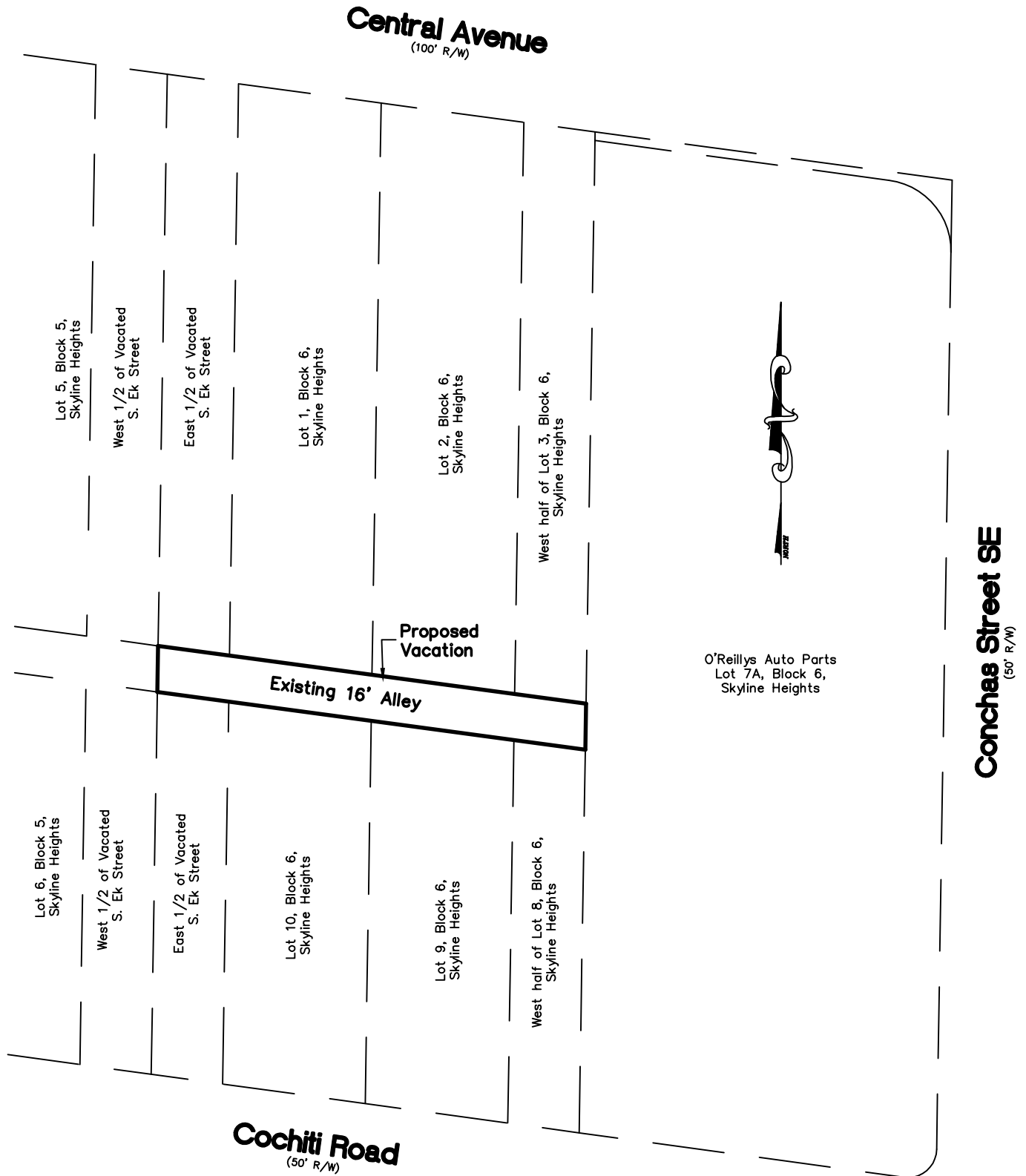


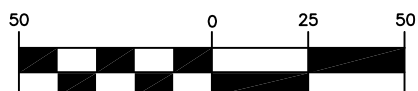
*Exhibit for
Proposed Vacation of a 16' Alley
Between Lots 1, 2, 9 and 10
and the West Half of Lots 3 and 8
Block 6, Skyline Heights
City of Albuquerque
Bernalillo County, New Mexico
July 2015*



CARTESIAN SURVEYS INC.

P.O. BOX 44414 RIO RANCHO, N.M. 87174
Phone (505) 896-3050 Fax (505) 891-0244

GRAPHIC SCALE



(IN FEET)
1 inch = 50 ft.