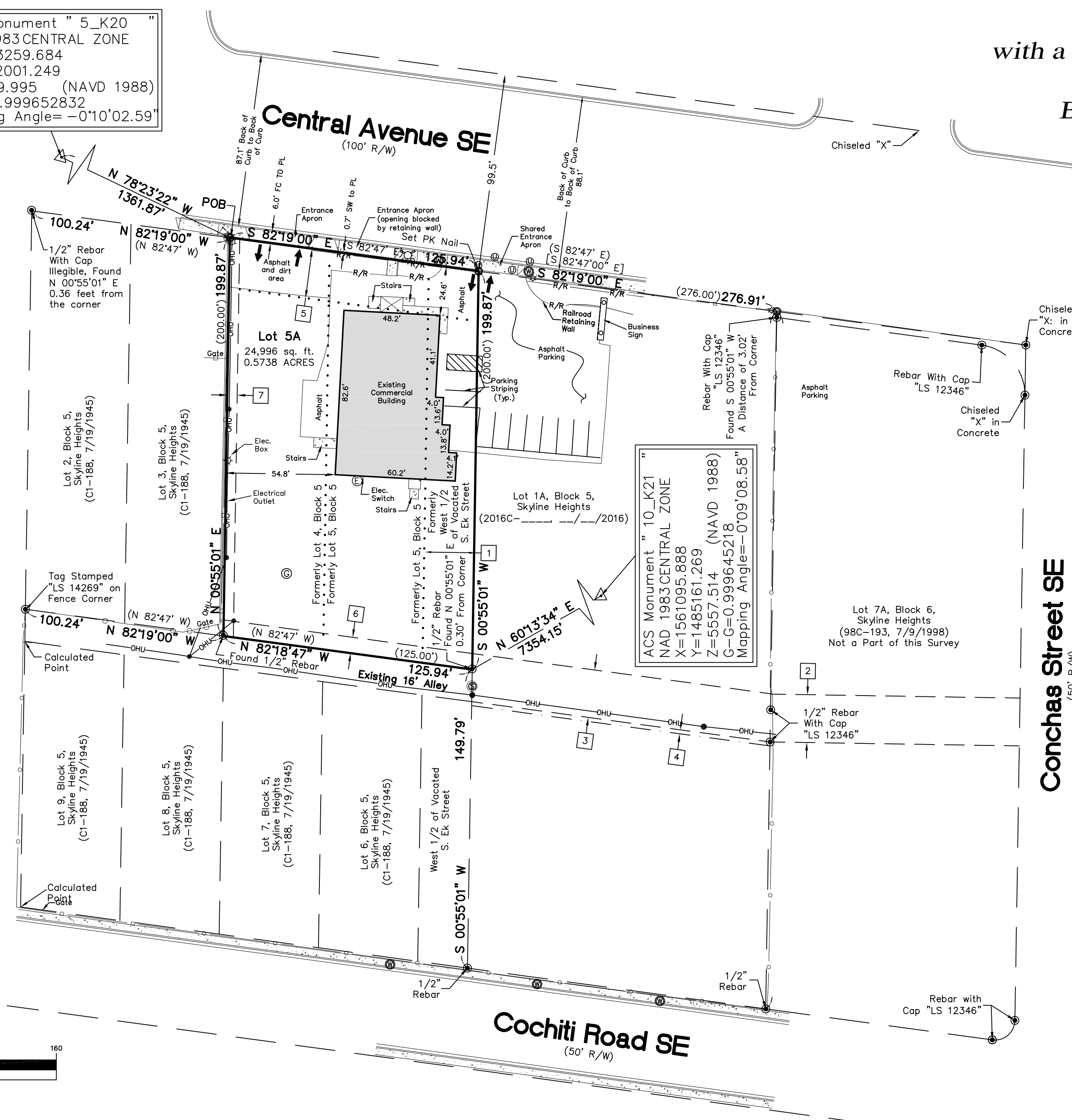


Site Sketch for  
**Lot 5A, Block 5,  
 Skyline Heights**  
 Being Comprised of  
 Lots 4 and 5, Block 5,  
 Skyline Heights Together  
 with a Portion of the Vacated S. Ek Street  
 City of Albuquerque  
 Bernalillo County, New Mexico  
 April 2016

ACS Monument " 5\_K20  
 NAD 1983 CENTRAL ZONE  
 X=1553259.684  
 Y=1482001.249  
 Z=5429.995 (NAVD 1988)  
 G-G=0.999652832  
 Mapping Angle=-0°10'02.59"

**Legend**

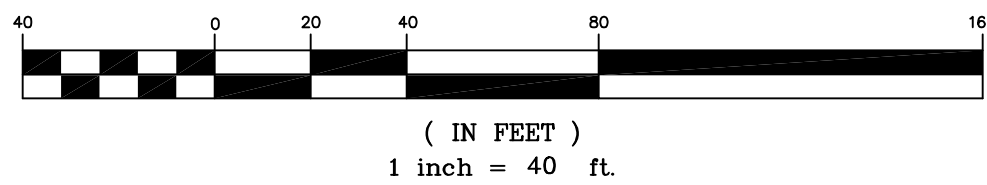
N 90°00'00" E	MEASURED BEARING AND DISTANCES
(N 90°00'00" E)	RECORD BEARINGS AND DISTANCES PER PLAT OF RECORD (C1-188, 7/19/45)
[N 90°00'00" E]	RECORD BEARINGS AND DISTANCES PER PLAT OF LOT 7A, BLOCK 6, SKYLINE HEIGHTS (98C-193, 7/9/98)
●	FOUND MONUMENT MARKED AS INDICATED
○	SET BATHEY MARKER WITH CAP "LS 14271" UNLESS MARKED OTHERWISE
⊠	TRANSFORMER
⊕	ELECTRIC METER
⊙	MANHOLE
—□—	METAL FENCE
—○—	CHAIN LINK FENCE
▬▬▬	BLOCK WALL
—R/R—	RAILROAD TIES
▭	CONCRETE
⊙	GAS METER
⊠	UTILITY PEDESTAL
⊕	LIGHT POST
—OHU—	OVERHEAD UTILITY LINES
⊙	WATER METER
⊠	TELEPHONE MANHOLE
●	UTILITY POLE
⋯	LOT LINE ELIMINATED
↑↑	CURB CUT/INDICATION OF ACCESS TO ROADWAY
⊕	FIRE HYDRANT



**Easement Notes**

- 1 25' UTILITY EASEMENT RESERVED BY THE CITY OF ALBUQUERQUE IN PLACE OF VACATED ROADWAY (VACATED BY THE FILING OF THIS PLAT)
- 2 EXISTING 24' PUBLIC ACCESS EASEMENT (7/9/98, 98C-193)
- 3 24' PUBLIC ACCESS, PUBLIC UTILITY AND PUBLIC SANITARY SEWER EASEMENT (\_\_\_/\_\_\_/2016, 2016C-\_\_\_\_\_)
- 4 2' PUBLIC UTILITY EASEMENT (\_\_\_/\_\_\_/2016, 2016C-\_\_\_\_\_)
- 5 EXISTING 25' PLAT SETBACK LINE, ELIMINATED WITH THE FILING OF THIS PLAT
- 6 8' PUBLIC ACCESS, PUBLIC UTILITY AND PUBLIC SANITARY SEWER EASEMENT SURFACE TO BE MAINTAINED BY OWNERS OF LOT 5A, GRANTED WITH THE FILING OF THIS PLAT
- 7 5' P.U.E. GRANTED WITH THE FILING OF THIS PLAT.

**GRAPHIC SCALE**



**Conchas Street SE**  
 (50' R/W)

**CARTESIAN SURVEYS INC.**

P.O. BOX 44414 RIO RANCHO, N.M. 87174  
 Phone (505) 896-3050 Fax (505) 891-0244