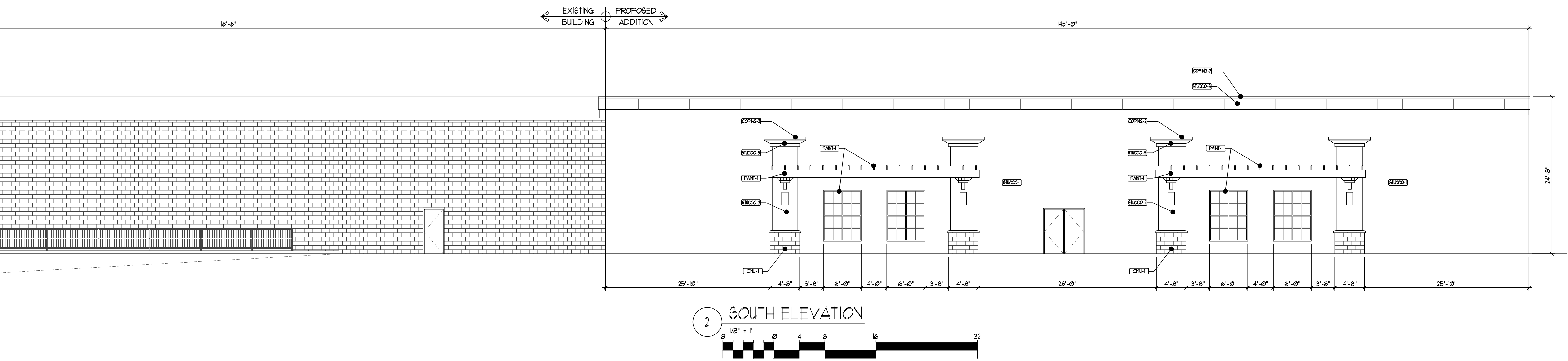


1 NORTH ELEVATION
 1/8" = 1'

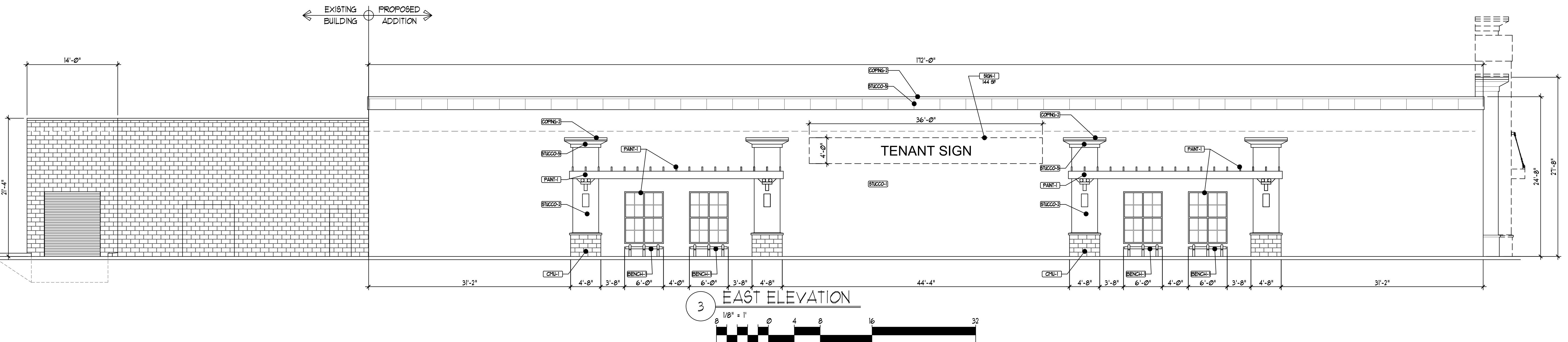
| EXTERIOR MATERIALS | |
|--------------------|---|
| CHU-1 | NEW 4" SPLT FACED VENEER BLOCK WITH CAP BLOCK PAINTED FINISH - RUGGED BROWN SW 6062 |
| STUCCO-3 | EXTERIOR STUCCO SYSTEM, COLOR = TRAVERTINE SW 1122 |
| STUCCO-2 | EXTERIOR STUCCO SYSTEM, COLOR = PURE WHITE SW 1009 |
| STUCCO-4 | EXTERIOR STUCCO SYSTEM, COLOR = CANOE SW 1124 |
| STUCCO-5 | EXTERIOR STUCCO SYSTEM, COLOR = SAFARI SW 1691 |
| STUCCO-6 | EXTERIOR STUCCO SYSTEM, COLOR = RUGGED BROWN SW 6062 |
| COPING-3 | PREFINISHED METAL COPING, COLOR = TO MATCH ADJACENT STUCCO COLOR COAT |
| COPING-2 | PREFINISHED METAL COPING, COLOR = TO MATCH ADJACENT STUCCO COLOR COAT |
| COPING-1 | PREFINISHED METAL COPING, COLOR = TO MATCH ADJACENT STUCCO COLOR COAT |
| PAINT-1 | EXTERIOR PAINT/DECORATIVE ELEMENTS/TRELLIS STEEL, COLOR = IRON ORE SW 1069 |
| PAINT-2 | EXTERIOR PAINT - CANOPY STEEL, COLOR = RED |
| SIGN-1 | INDIVIDUAL CHANNEL LETTER SIGN, INTERNALLY ILLUMINATED, PROVIDE 5/8" FIRE RETARDANT PLY. BACKING AT SIGN AREA |
| CH-1 | 3/4" FRY CHANNEL SCREED, JOINT IN PATTERN DESIGNATED ON ELEVATION |
| BENCH-1 | STEEL AND WOOD BENCH PER DET. 10/SD2, PAINT STEEL FLAT BLACK |

SIGNAGE NOTES:
 ALL BUILDING MOUNTED SIGNAGE TO BE PROVIDED BY TENANT.
 TENANT'S SIGN VENDOR TO COMPLY WITH ALL APPLICABLE CITY OF ALBUQUERQUE SIGN REGULATIONS PER THE ZONING CODE. ALL SIGNS MUST BE PERMITTED SEPARATELY.

| REV | DATE | BY | REVISION |
|-----|------|----|----------|
| 1 | | | |
| 2 | | | |
| 3 | | | |
| 4 | | | |



2 SOUTH ELEVATION
 1/8" = 1'



3 EAST ELEVATION
 1/8" = 1'

MODULUS ARCHITECTS
 220 COPPER AVE. N.W. SUITE 350
 ALBUQUERQUE, NEW MEXICO 87102
 PHONE (505) 338-1499 FAX (505) 338-1498

PROJECT TITLE: WEST CENTRAL PLAZA + PROP ADDITION
 4008 CENTRAL AVE. SUITE 350 ALBUQUERQUE NEW MEXICO

PROJECT MANAGER: CRAIG CALVERT
 JOB NO.: K-AT
 DRAWN BY: C-S

SHEET TITLE: PROPOSED BUILDING ELEVATIONS

DATE: 03/28/16
 SCALE: AS NOTED
 SHEET: 4
 OF: 5