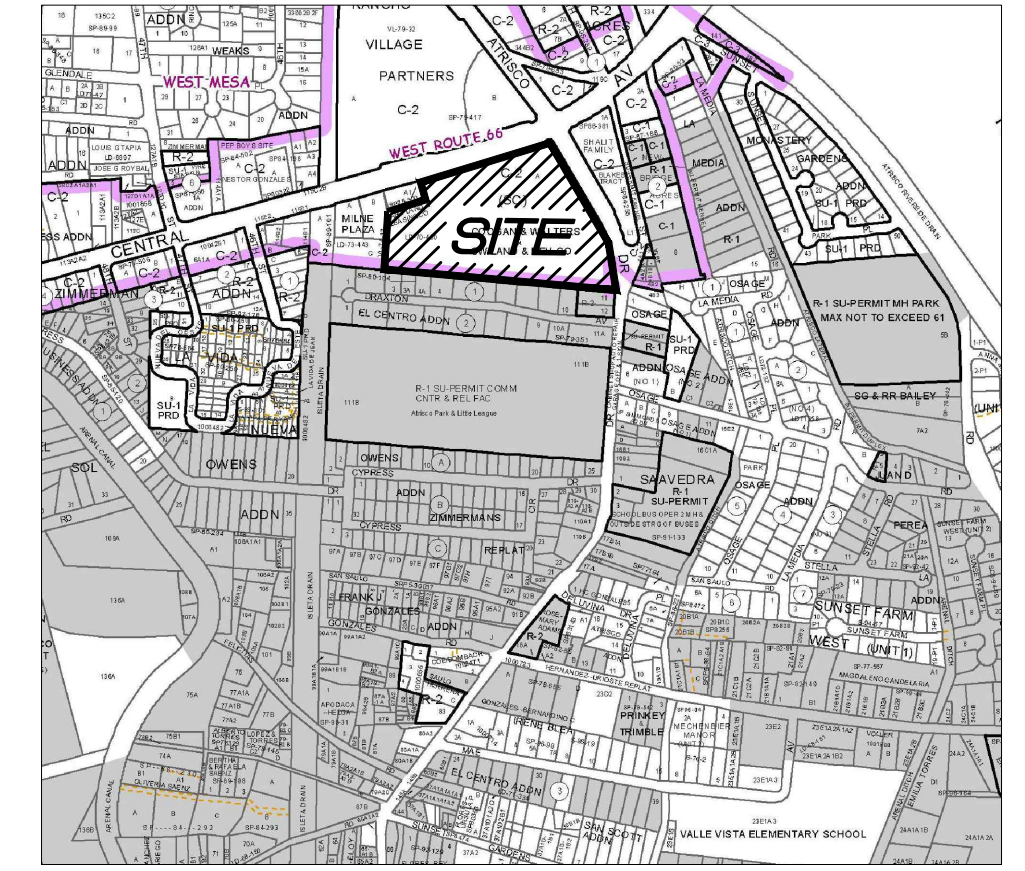
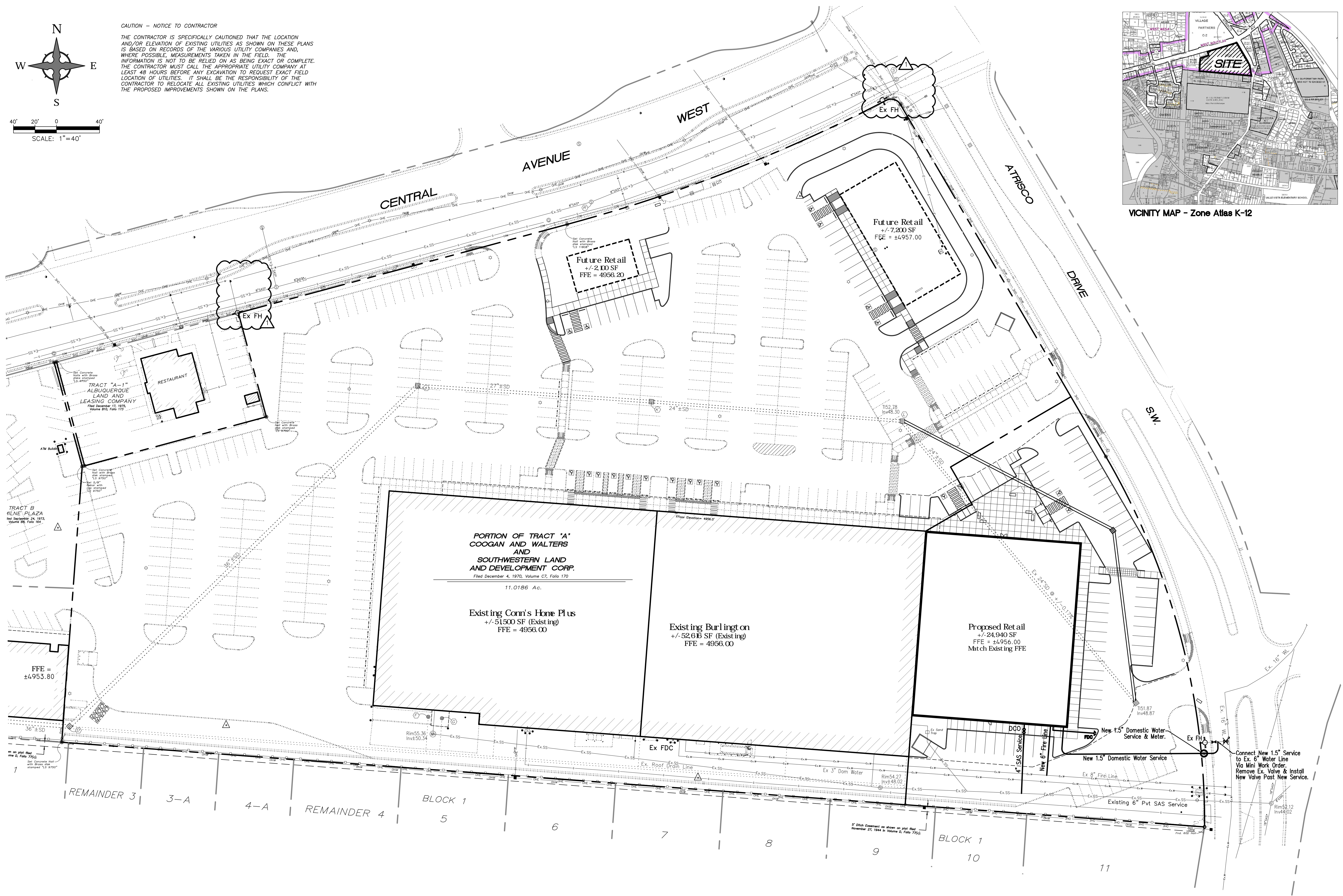


CAUTION - NOTICE TO CONTRACTOR
 THE CONTRACTOR IS SPECIFICALLY CAUTIONED THAT THE LOCATION AND/OR ELEVATION OF EXISTING UTILITIES AS SHOWN ON THESE PLANS IS BASED ON RECORDS OF THE VARIOUS UTILITY COMPANIES AND, WHERE POSSIBLE, MEASUREMENTS TAKEN IN THE FIELD. THE INFORMATION IS NOT TO BE RELIED ON AS BEING EXACT OR COMPLETE. THE CONTRACTOR MUST CALL THE APPROPRIATE UTILITY COMPANY AT LEAST 48 HOURS BEFORE ANY EXCAVATION TO REQUEST EXACT FIELD LOCATION OF UTILITIES. IT SHALL BE THE RESPONSIBILITY OF THE CONTRACTOR TO RELOCATE ALL EXISTING UTILITIES WHICH CONFLICT WITH THE PROPOSED IMPROVEMENTS SHOWN ON THE PLANS.



VICINITY MAP - Zone Atlas K-12

REV	DATE	BY	REVISION
1			
2			
3			
4			
5			

MODULUS ARCHITECTS
 220 COPPER AVE. N.W. SUITE 350
 ALBUQUERQUE, NEW MEXICO 87102
 PHONE (505) 338-1499 FAX (505) 338-1498

JEFFREY TODD WOOTEN
 NEW MEXICO
 16892
 PROFESSIONAL ENGINEER
 8/25/2016

PROJECT TITLE	WEST CENTRAL PLAZA - PROP. ADDITION
PROJECT ADDRESS	4208 CENTRAL AVE. SW ALBUQUERQUE NEW MEXICO
PROJECT MANAGER	JEFF WOOTEN
JOB NO.	2015064
DRAWN BY	JTW
SHEET TITLE	UTILITY PLAN

DATE	3/28/2016	SHEET	1
SCALE	AS NOTED	OF	3

Wooten Engineering
 1005 21st Street SE, Suite B1
 Rio Rancho, NM 87124
 Ph: 505.980.3560