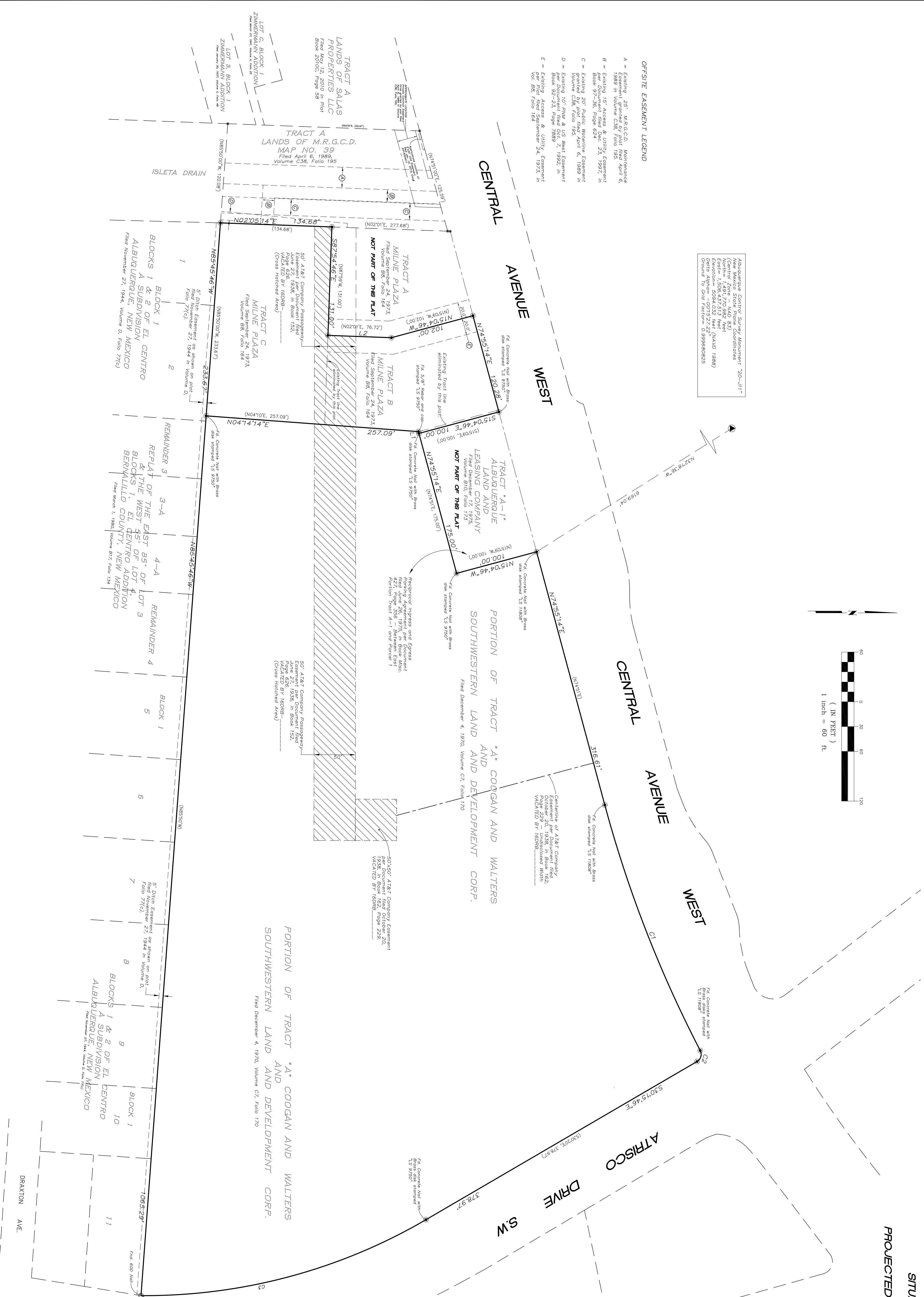


VACATION EXHIBIT

A PORTION OF TRACT A, COOGAN AND WALTERS AND
SOUTHWESTERN LAND AND DEVELOPMENT CORP.
AND
TRACTS B AND C, MILNE PLAZA

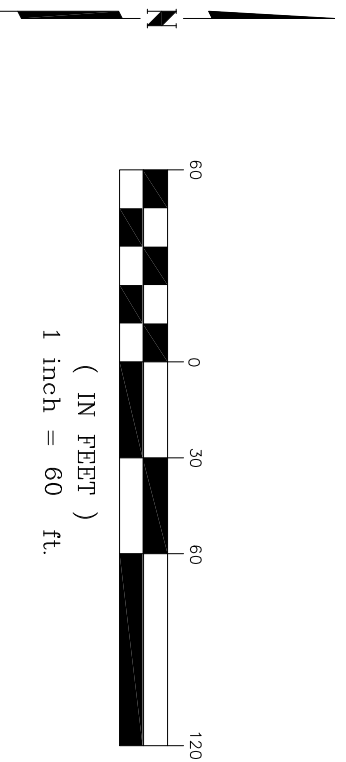
SITUATE WITHIN THE TOWN OF ATRISCO GRANT
IN
PROJECTED SECTION 24 TOWNSHIP 10 NORTH, RANGE 2 EAST
NEW MEXICO PRINCIPAL MERIDIAN
CITY OF ALBUQUERQUE
BERNALILLO COUNTY, NEW MEXICO
MARCH, 2016



- OFFSITE EASEMENT LEGEND
- A = Existing 20' ALR/C.D. Maintenance Easement, granted by John Fred Allen & 1989 in Volume C.R. Folio 195.
 - B = Existing 15' Access & Utility Easement, granted by John Fred Allen & 1989 in Volume C.R. Folio 195.
 - C = Existing 20' Public Waterline Easement, granted by John Fred Allen & 1989 in Volume C.R. Folio 195.
 - D = Existing 10' ROW & US West Easement, granted by John Fred Allen & 1989 in Volume C.R. Folio 195.
 - E = Existing Access & Utility Easement, granted by John Fred Allen & 1989 in Volume C.R. Folio 195.

Abutment Control Survey Monument "20--J1"

New Mexico State Plane Coordinates
North = 1,817,773.562 Feet
East = 509,403.921 Feet (NAD 1983)
Datum = North American Datum of 1983
Ground to Grid Factor = 0.99986825



Abutment Control Survey Monument "15--J2"

New Mexico State Plane Coordinates
North = 1,817,773.562 Feet
East = 509,403.921 Feet (NAD 1983)
Datum = North American Datum of 1983
Ground to Grid Factor = 0.99986825