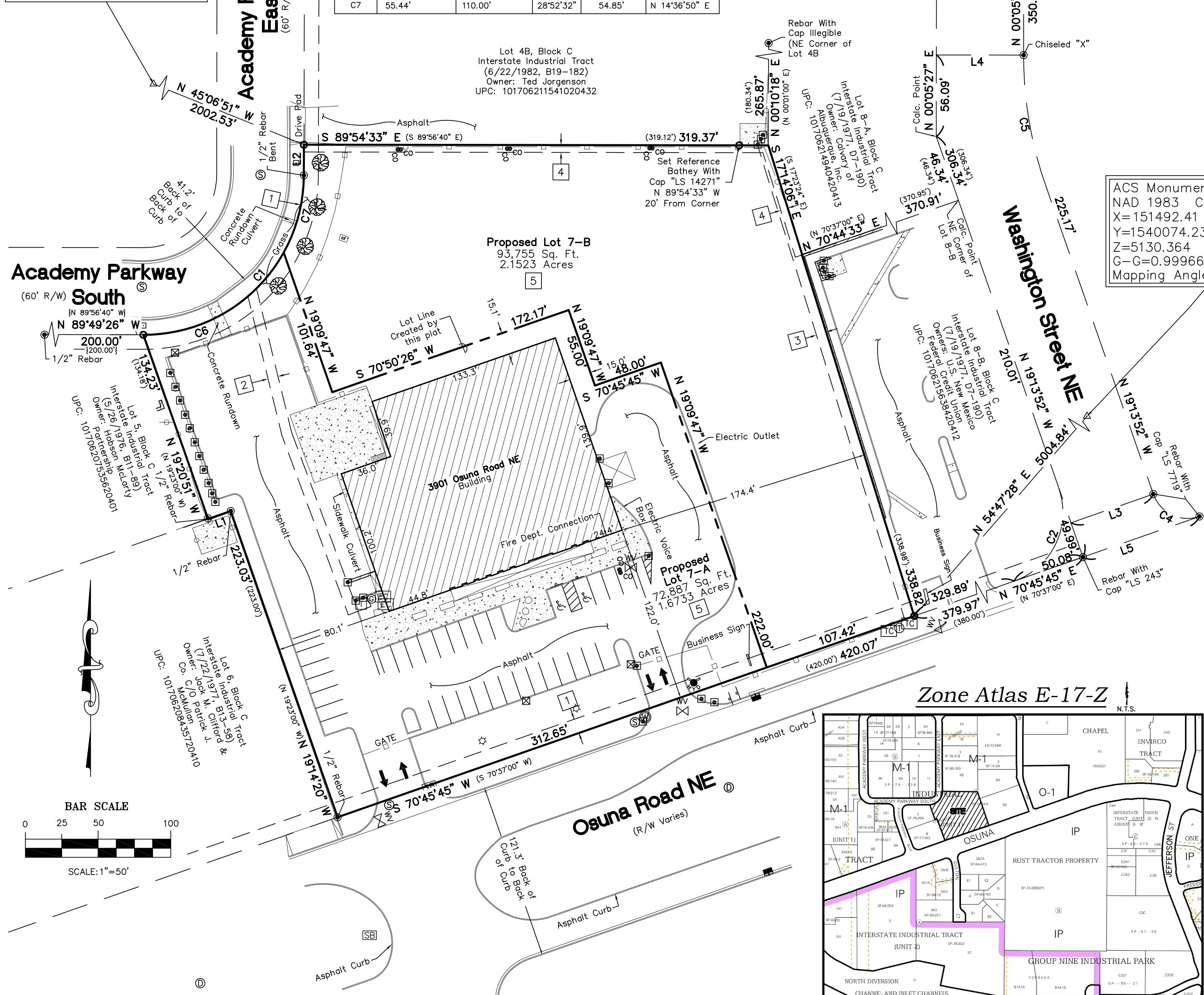


**Sketch Plat for  
Lots 7A and 7B, Block C  
Interstate Industrial Park  
Unit 1**  
Being comprised of Lot 7,  
Block C, Interstate Industrial Park  
Within Projected  
Section 26, T 11 N, R 3 E, NMPM, into  
the Elena Gallegos Grant  
City of Albuquerque  
Bernalillo County, New Mexico  
July 2015

ACS Monument "NAA-8"  
NAD 1983 CENTRAL ZONE  
X=1513775.5  
Y=1534148.397  
Z=5008.350 (NAVD 1988)  
G-G=0.9996673929  
Mapping Angle=-0°12'17.09"

Curve #	Length	Radius	Delta	Chord Length	Chord Direction
C1	172.79' (172.79')	110.00' (110.00')	90°00'05"	155.57'	N 45°10'36" E
C2	78.53'	50.00'	89°59'07"	70.70'	N 25°46'11" E
C4	39.27'	25.00'	90°00'23"	35.36'	S 64°14'04" E
C5	90.89'	269.90'	19°17'44"	90.47'	S 09°35'06" E
C6	117.35'	110.00'	61°07'32"	111.87'	N 59°36'53" E
C7	55.44'	110.00'	28°52'32"	54.85'	N 14°36'50" E

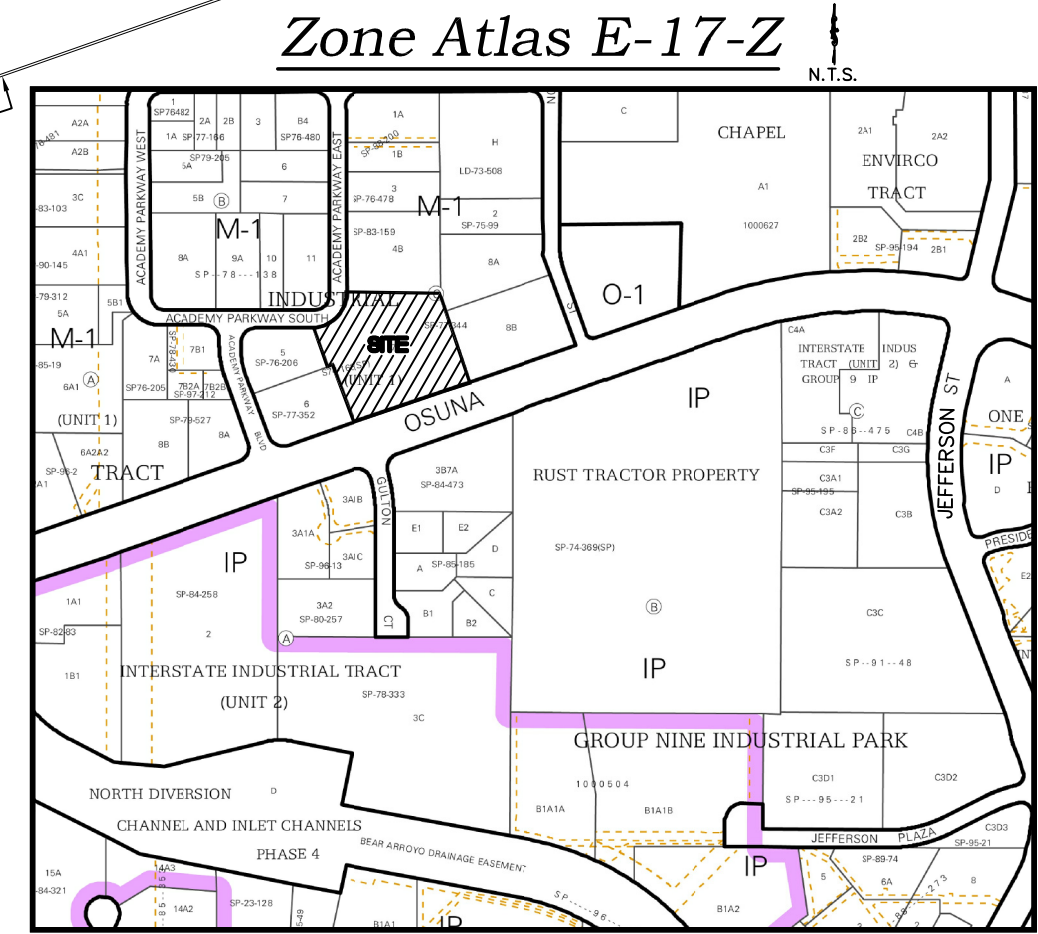
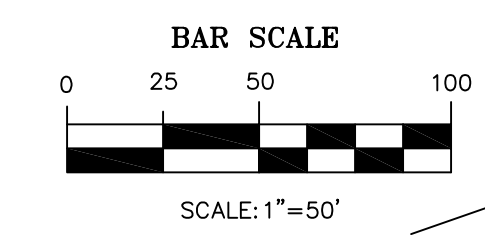
Line #	Direction	Length (ft)
L1	S 70°43'08" W (S 70°37'00" W)	16.52' (16.50')
L2	N 00°10'34" E (N 00°03'20" E)	21.09' (21.01')
L3	N 70°46'08" E	60.00' (60.00')
L4	S 89°54'33" E	60.00' (60.00')
L5	N 70°45'45" E	84.90'



ACS Monument "I-25-14"  
NAD 1983 CENTRAL ZONE  
X=151492.41  
Y=1540074.23  
Z=5130.364 (NAVD 1988)  
G-G=0.999666707  
Mapping Angle=-0°11'36.07"

**Legend**

N 90°00'00" E	MEASURED BEARINGS AND DISTANCES
(N 90°00'00" E)	RECORD BEARINGS AND DISTANCES (7/19/77, D7-190)
⊙	FOUND MONUMENT AS INDICATED
○	SET BATHEY MARKER "LS 14271" UNLESS OTHERWISE NOTED
▭	COVERED AREA
▭	CONCRETE
▭	UTILITY PEDESTAL
▭	BLOCK WALL
▭	BOLLARD AND CABLE FENCING
▭	CHAINLINK FENCE
⊕	TRANSFORMER
⊕	ELECTRIC CABINET
⊕	SIGNAL BOX
⊕	GAS METER
⊕	WATER VALVE
⊕	WATER METER
⊕	FIRE HYDRANT
⊕	SANITARY SEWER MANHOLE
⊕	SAS CLEANOUT
⊕	IRRIGATION BOX
⊕	STORM DRAIN MANHOLE
⊕	STORM DRAIN INLET
⊕	SIGN
⊕	CURB CUT/INDICATION OF ACCESS TO ROADWAY
⊕	BOLLARD
⊕	TELEPHONE CABINET
⊕	DECIDUOUS TREE
⊕	LIGHT POLE
⊕	TELEPHONE MANHOLE



- Easement Notes**
- EXISTING 10' P.U.E. (7/19/1977, D7-190)
  - EXISTING 7' PNM AND MST&T UNDERGROUND UTILITY EASEMENT (7/10/79, MISC. 702-450)
  - EXISTING 7' RIGHT-OF-WAY EASEMENT FOR MST&T (8/18/81, MISC. 873-178)
  - EXISTING 5' DRAINAGE EASEMENT (4/13/82, MISC. 923-86)
  - EXISTING EASEMENT AGREEMENT BENEFITTING BOMUR ELECTRIC FOR INGRESS/EGRESS AND STORM DRAINAGE (7/18/86, MISC. 373A-542)-BLANKET IN NATURE

**CARTESIAN SURVEYS INC.**  
P.O. BOX 44414 RIO RANCHO, N.M. 87174  
Phone (505) 896-3050 Fax (505) 891-0244