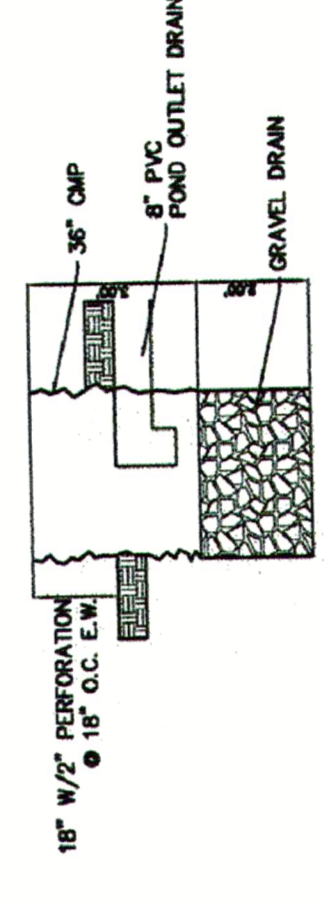
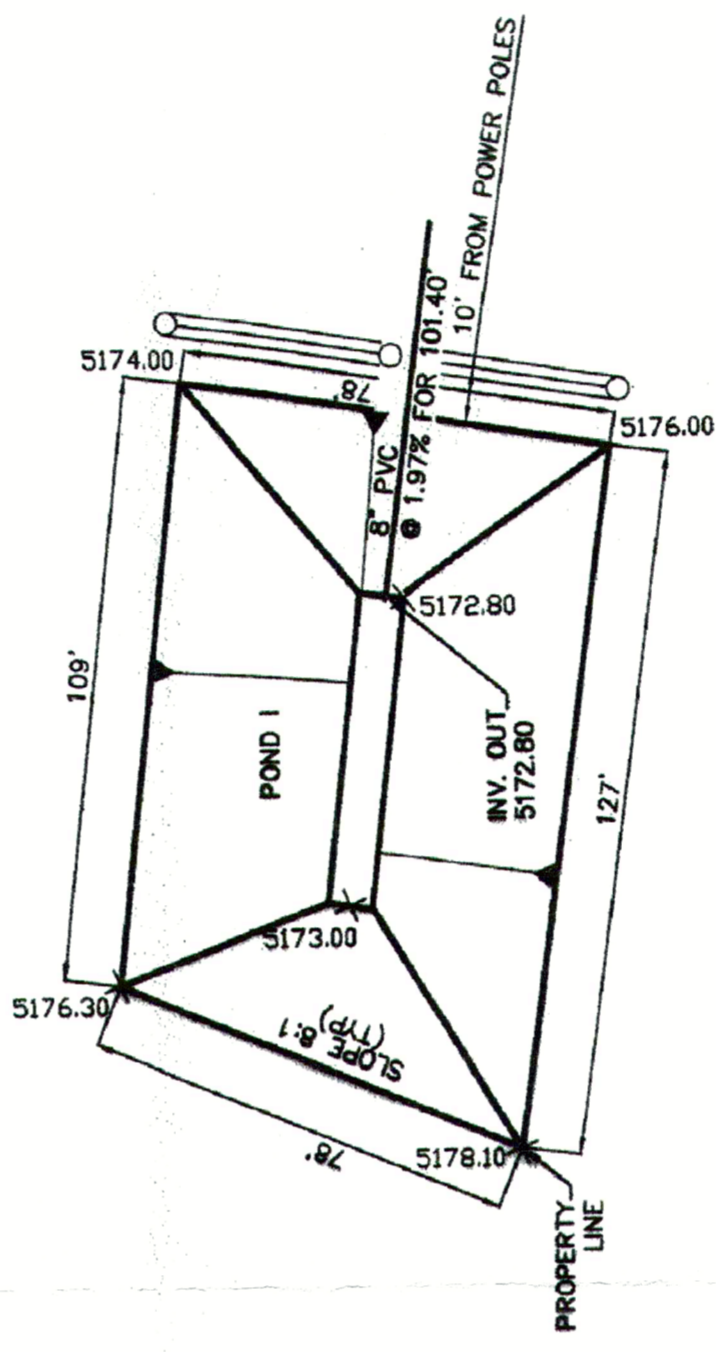
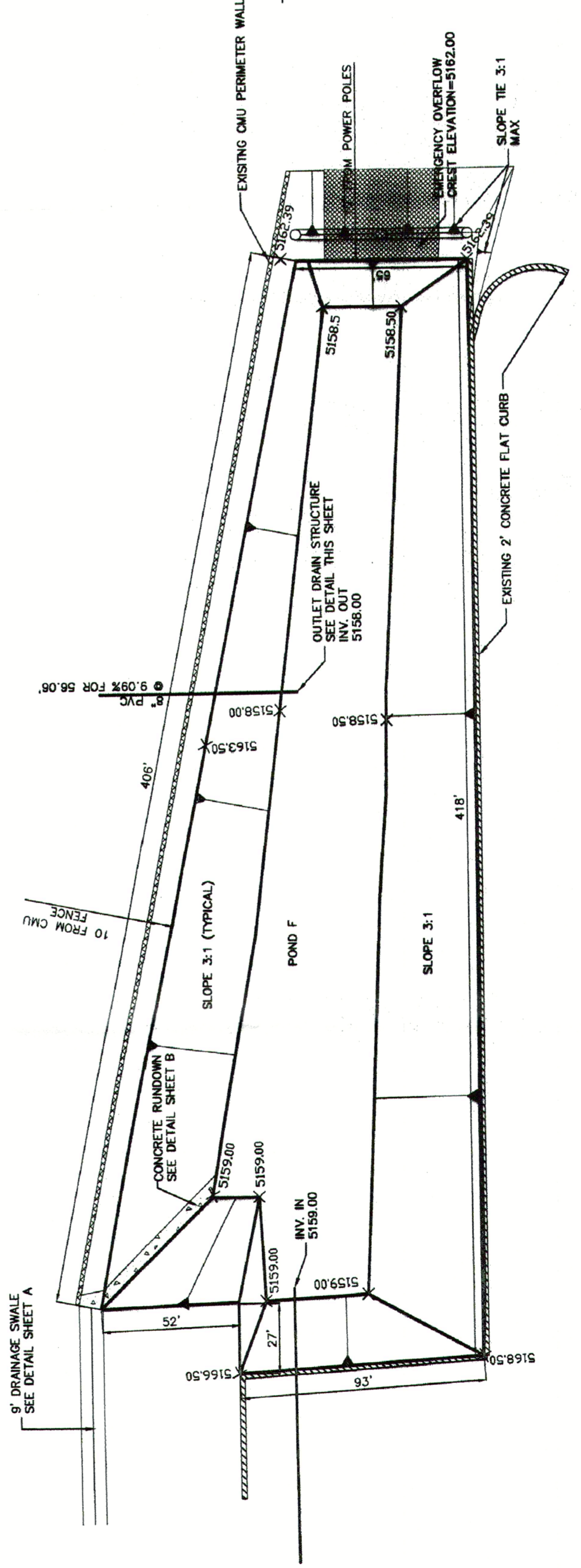
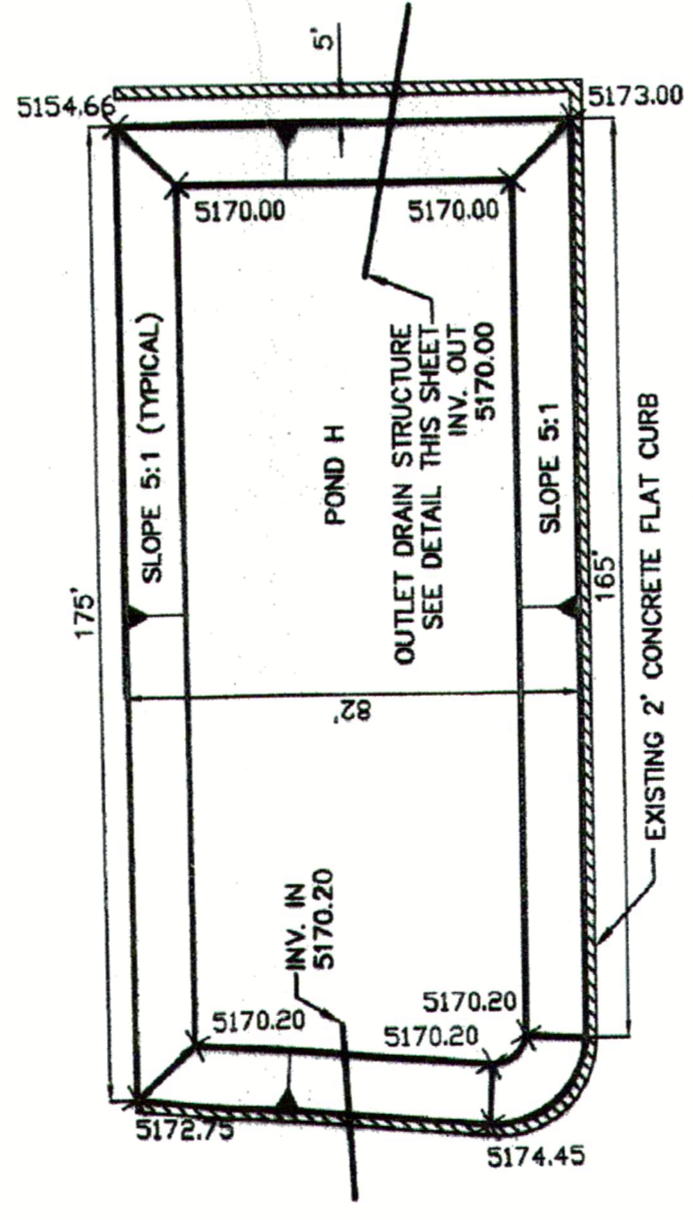
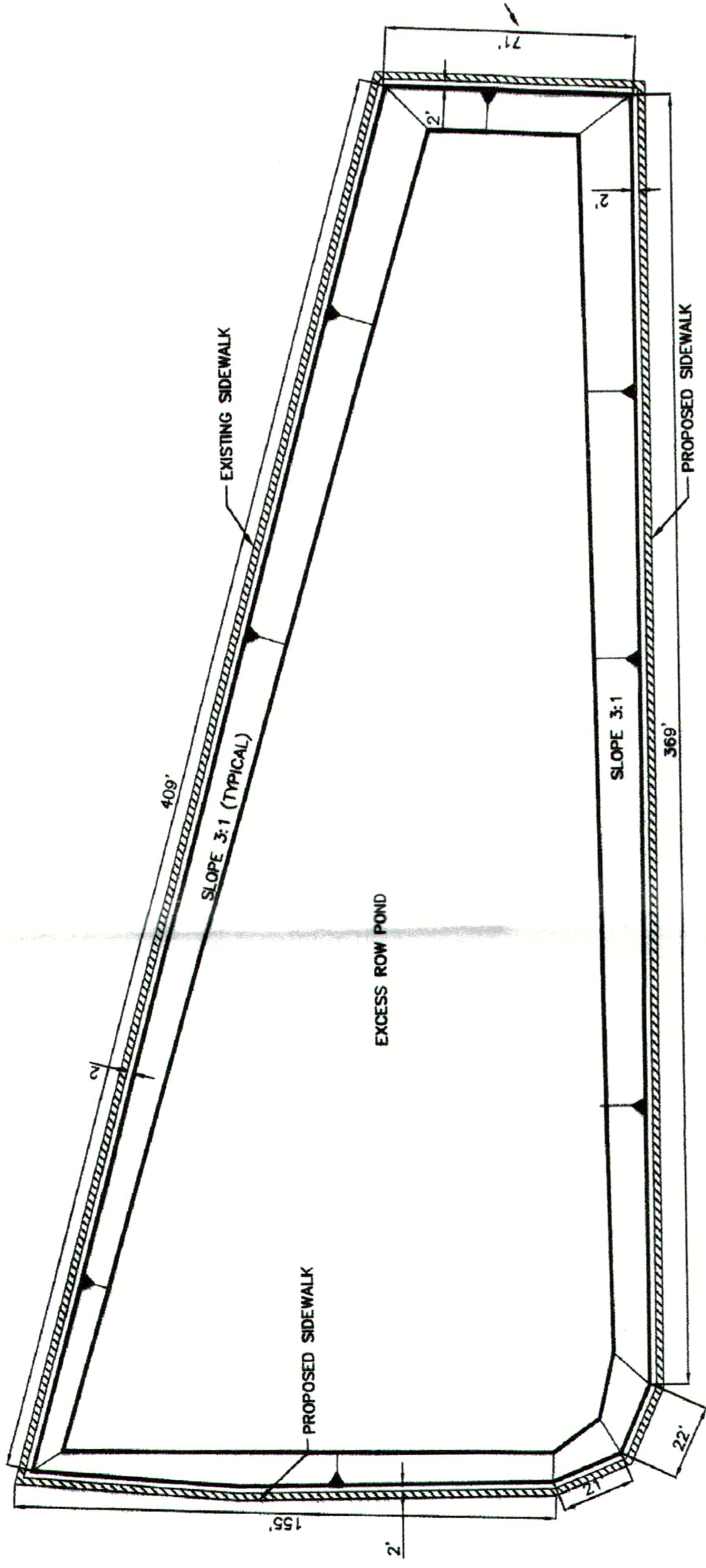
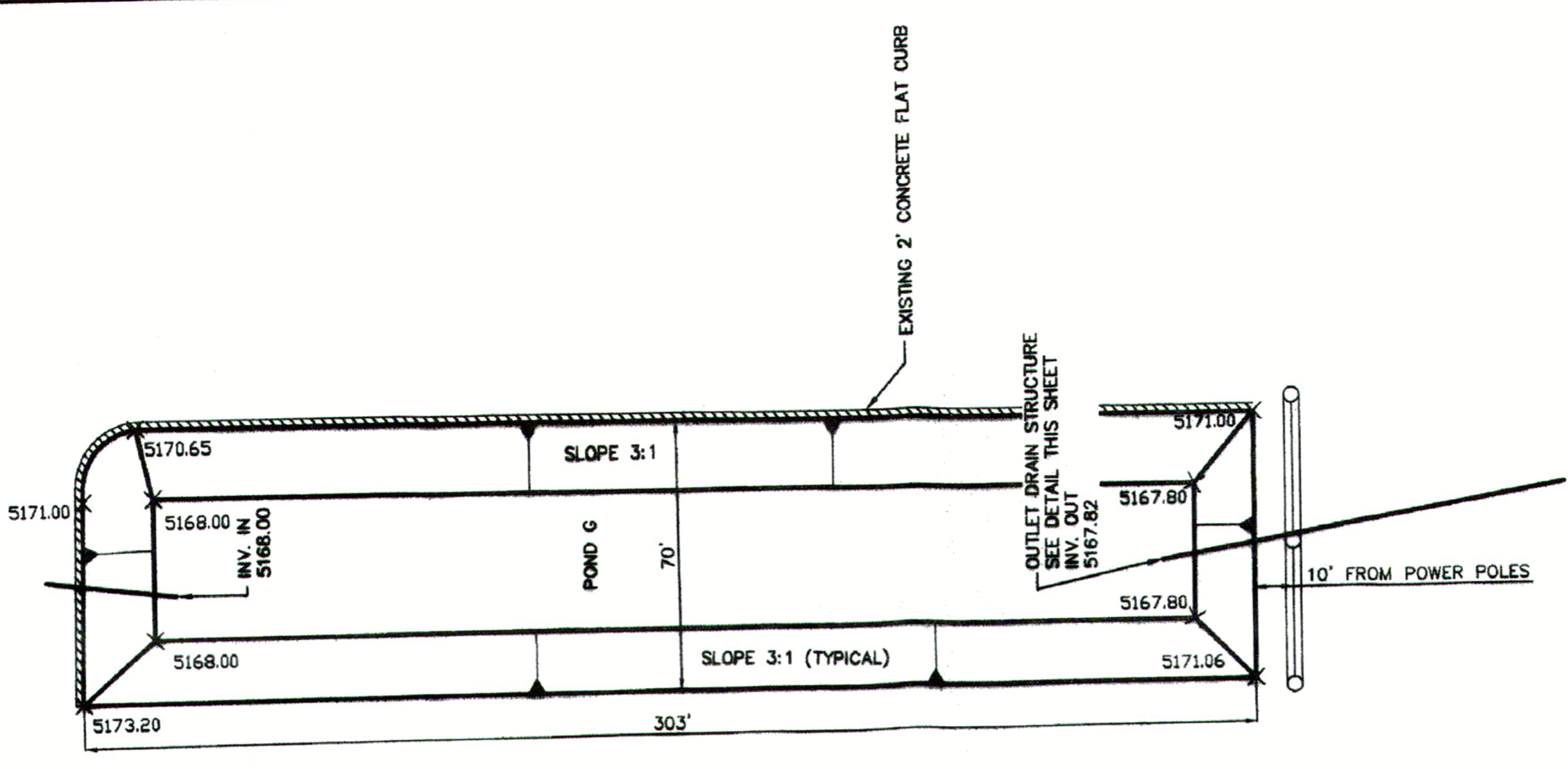
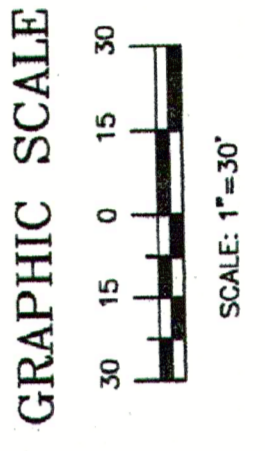


GRADING AND DRAINAGE "EXISTING" SHOWN FOR INFORMATION ONLY



POND OUTLET DRAIN STRUCTURE DETAIL  
N/S



|   |  |   |                                   |
|---|--|---|-----------------------------------|
| ENGINEER'S SEAL                           |  | <b>SAGE MOBILE HOME PARK</b><br><b>POND DETAIL SHEET</b>                                      | DRAWN BY: VC/VJ<br>DATE: 12-19-00 |
|   |  |   | SHEET #<br>C                      |
| ENGINEER: RONALD R. BEHRMAN<br>P.E. #7868 |  | FIRM: THIERRA WEST, LLC<br>8509 JEFFERSON NE #1113<br>ALBUQUERQUE, NM 87113<br>(505) 858-3100 |                                   |
| REVISION: 08/22/05<br>DATE: 08/22/05      |  | REVISION: 12-19-00<br>DATE: 12-19-00  |                                   |
| SHEET 6 OF 8                              |  | 9-6   |                                   |

98th St. Mobile Home Park  
 98th and Devargas Rd. SW  
 Albuquerque, NM

Grading and Drainage Ponds

Owner Representative  
 J. Matt Myers, Esq.  
 Myers, McCreedy & Myers, P.C.  
 Albuquerque, NM 87104  
 1401 Central Ave. NW  
 Albuquerque, NM 87104  
 Ph: (505) 241-9280  
 Fax: (505) 241-9109  
 myers@mcmy.com

Design  
 The Hilltop  
 1909 Edith NE  
 Albuquerque, NM 87114  
 Cont. Lic. #2458  
 Ph: (505) 938-9630  
 Fax: (505) 938-1131  
 dmyers@hilltoplandscape.com