

**Sketch Plat for
Lots M-1 through M-10
and L-1-A
La Luz del Oeste, Unit 4
Being a Replat of
Tracts M & L-1, La Luz del Oeste, Unit 4
City of Albuquerque
Bernalillo County, New Mexico
September 2015**

Line #	Direction	Length (ft)
L1	S 57°44'21" W	21.46'
L2	S 32°15'39" E	12.50'
L3	S 57°44'21" W	20.54'
L4	N 57°44'21" E	24.42'
L5	N 32°15'39" W	12.50'
L6	N 57°44'21" E	20.58'
L7	N 57°44'21" E	24.38'
L8	N 32°15'39" W	12.50'
L9	N 57°44'21" E	20.62'
L10	S 57°44'21" W	24.34'
L11	S 32°15'39" E	12.50'
L12	N 57°44'21" E	20.66'
L13	N 57°44'21" E	24.29'
L14	N 32°15'39" W	12.43'
L15	N 57°44'21" E	20.71'
L16	N 57°44'21" E	24.50'
L17	N 32°15'39" W	12.44'
L18	N 57°44'21" E	20.50'
L19	N 57°44'21" E	24.21'
L20	N 32°15'39" W	12.50'

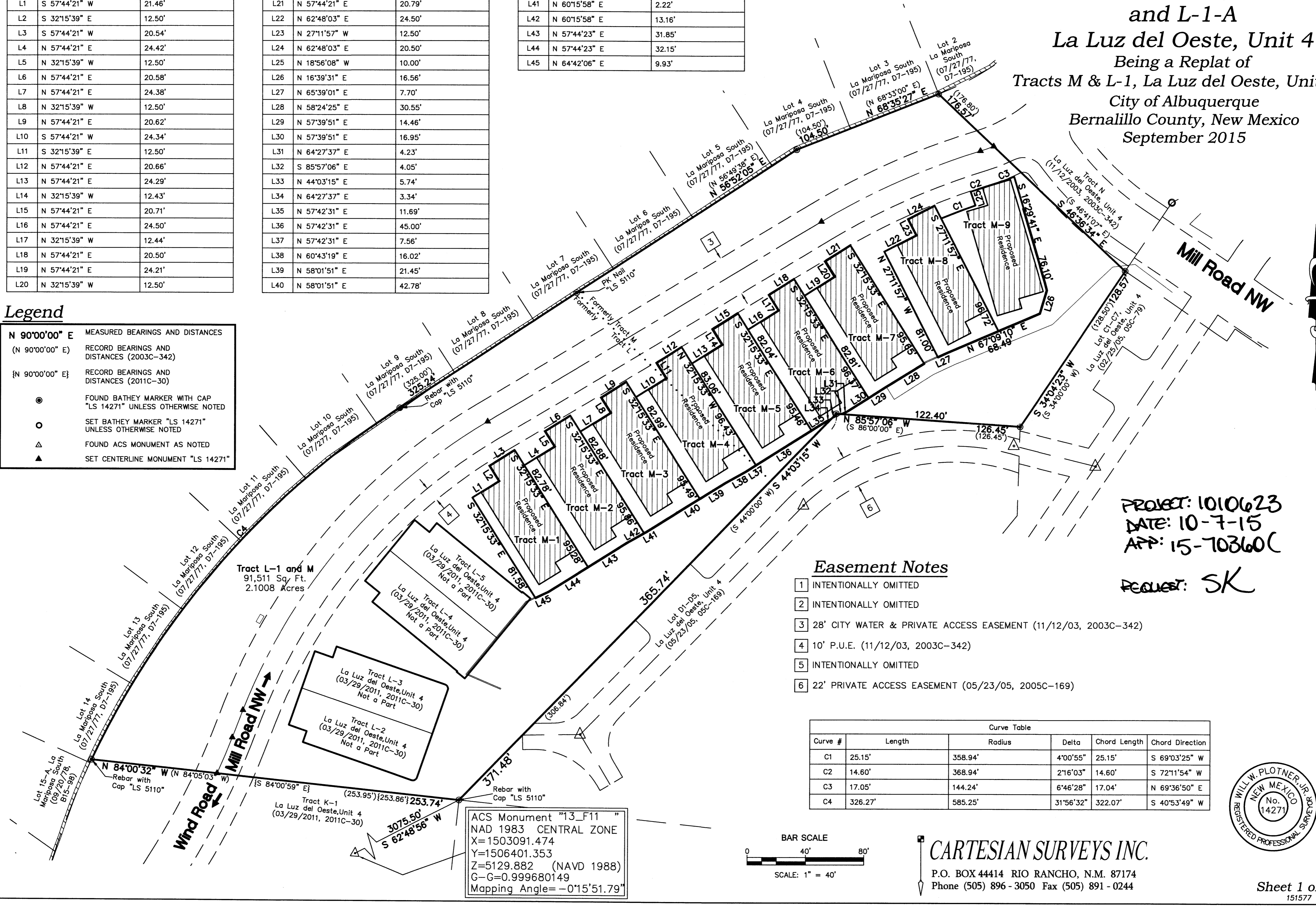
Line #	Direction	Length (ft)
L21	N 57°44'21" E	20.79'
L22	N 62°48'03" E	24.50'
L23	N 27°11'57" W	12.50'
L24	N 62°48'03" E	20.50'
L25	N 18°56'08" W	10.00'
L26	N 16°39'31" E	16.56'
L27	N 65°39'01" E	7.70'
L28	N 58°24'25" E	30.55'
L29	N 57°39'51" E	14.46'
L30	N 57°39'51" E	16.95'
L31	N 64°27'37" E	4.23'
L32	S 85°57'06" E	4.05'
L33	N 44°03'15" E	5.74'
L34	N 64°27'37" E	3.34'
L35	N 57°42'31" E	11.69'
L36	N 57°42'31" E	45.00'
L37	N 57°42'31" E	7.56'
L38	N 60°43'19" E	16.02'
L39	N 58°01'51" E	21.45'
L40	N 58°01'51" E	42.78'

Line #	Direction	Length (ft)
L41	N 60°15'58" E	2.22'
L42	N 60°15'58" E	13.16'
L43	N 57°44'23" E	31.85'
L44	N 57°44'23" E	32.15'
L45	N 64°42'06" E	9.93'

Legend

N 90°00'00" E MEASURED BEARINGS AND DISTANCES
(N 90°00'00" E) RECORD BEARINGS AND DISTANCES (2003C-342)
{N 90°00'00" E} RECORD BEARINGS AND DISTANCES (2011C-30)

● FOUND BATHEY MARKER WITH CAP "LS 14271" UNLESS OTHERWISE NOTED
○ SET BATHEY MARKER "LS 14271" UNLESS OTHERWISE NOTED
△ FOUND ACS MONUMENT AS NOTED
▲ SET CENTERLINE MONUMENT "LS 14271"

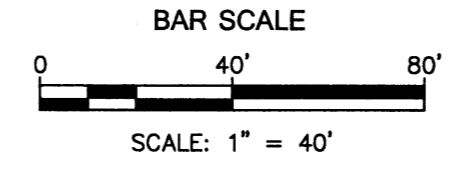


PROJECT: 1010623
DATE: 10-7-15
APP: 15-70360C
REQUEST: SK

- Easement Notes**
- 1 INTENTIONALLY OMITTED
 - 2 INTENTIONALLY OMITTED
 - 3 28' CITY WATER & PRIVATE ACCESS EASEMENT (11/12/03, 2003C-342)
 - 4 10' P.U.E. (11/12/03, 2003C-342)
 - 5 INTENTIONALLY OMITTED
 - 6 22' PRIVATE ACCESS EASEMENT (05/23/05, 2005C-169)

Curve #	Length	Radius	Delta	Chord Length	Chord Direction
C1	25.15'	358.94'	4°00'55"	25.15'	S 69°03'25" W
C2	14.60'	368.94'	2°16'03"	14.60'	S 72°11'54" W
C3	17.05'	144.24'	6°46'28"	17.04'	N 69°36'50" E
C4	326.27'	585.25'	31°56'32"	322.07'	S 40°53'49" W

ACS Monument "13_F11"
NAD 1983 CENTRAL ZONE
X=1503091.474
Y=1506401.353
Z=5129.882 (NAVD 1988)
G-G=0.999680149
Mapping Angle=-0°15'51.79"



CARTESIAN SURVEYS INC.
P.O. BOX 44414 RIO RANCHO, N.M. 87174
Phone (505) 896-3050 Fax (505) 891-0244

