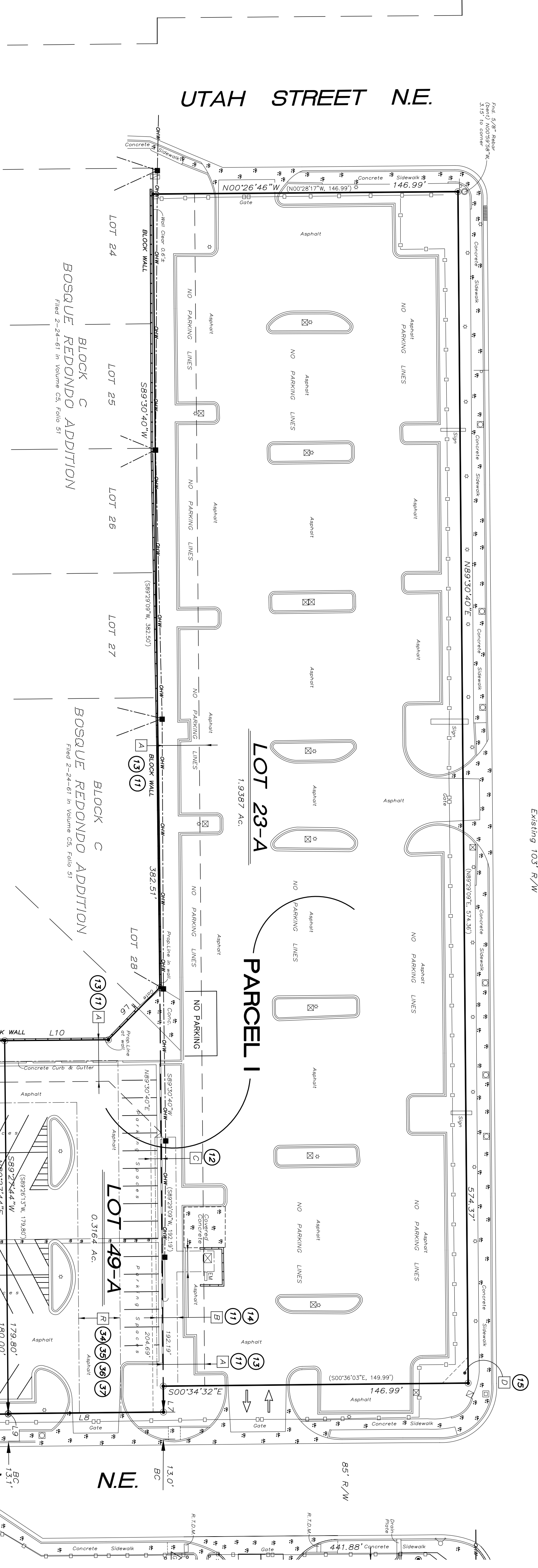


LOMAS BOULEVARD NE.
Existing 103' R/W

ALTA / NSPS. LAND TITLE SURVEY OF
LOT 36B-1-A, BLOCK S,
LOT 23-A, 49-A AND
46-A, BLOCK C
BOSQUE REDONDO ADDITION
SITUATE WITHIN
SECTION 19, TOWNSHIP 10 NORTH, RANGE 4 EAST
NEW MEXICO PRINCIPAL MERIDIAN
CITY OF ALBUQUERQUE
BERNALILLO COUNTY, NEW MEXICO
JANUARY, 2017
REVISED JANUARY 30, 2017
REVISED MARCH 2, 2017



CURVE TABLE

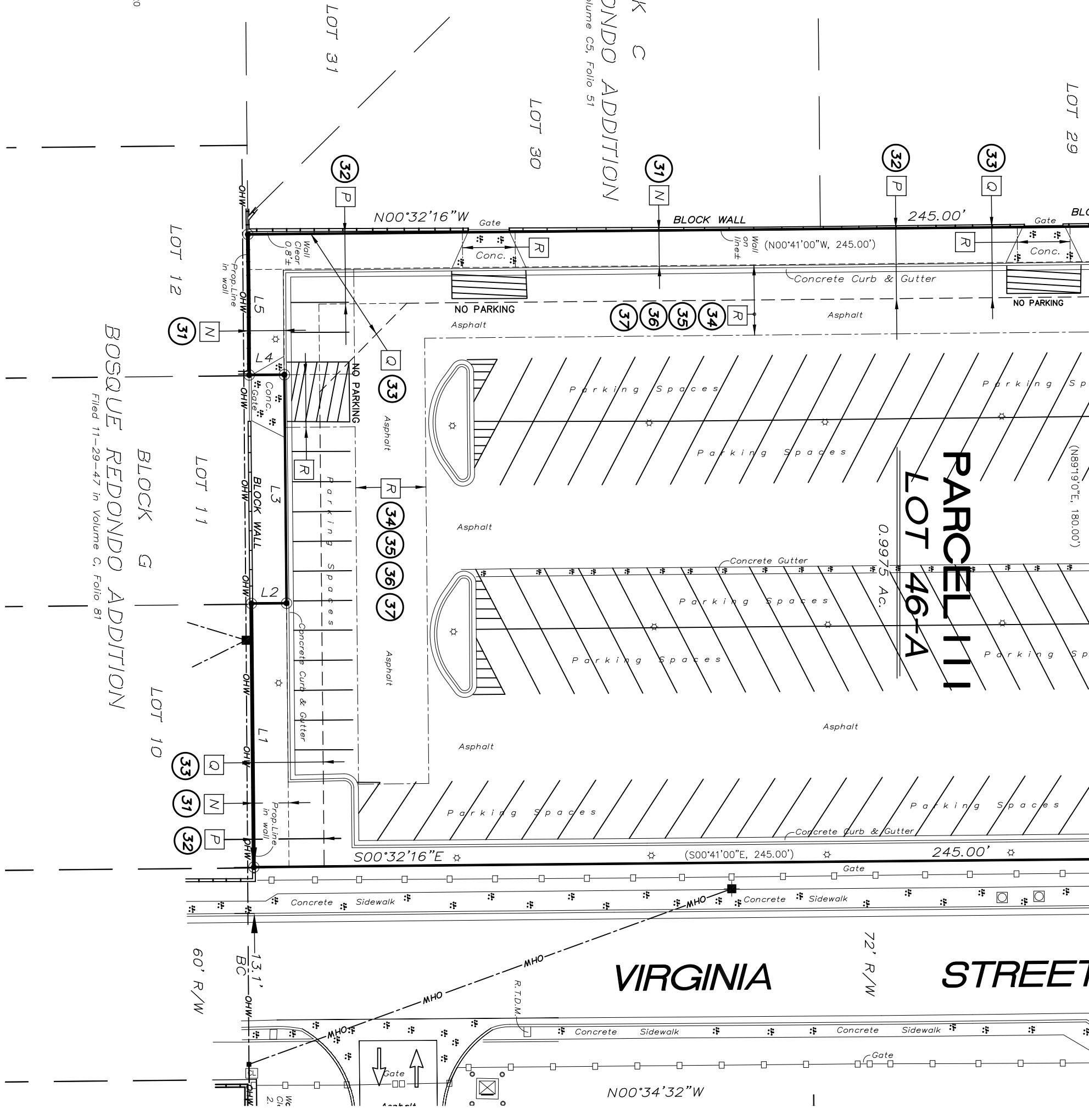
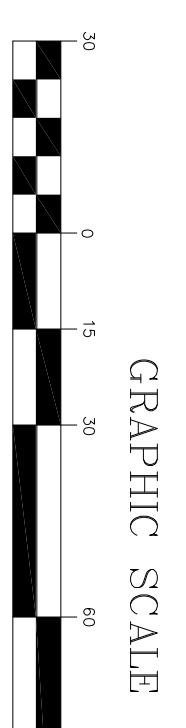
CURVE	LENGTH	RADIUS	TANGENT	CHORD	CHORD BEARING	DELTA
C1	39.29'	25.00'	25.00'	35.37'	N44°26'37"E	90°02'17"
C2	53.72'	35.00'	35.00'	48.60'	N44°34'02"E	87°56'25"
C3	15.07'	93.00'	17.92'	14.99'	S13°01'15"W	97°44'40"
C4	22.99'	57.00'	11.66'	22.84'	S14°45'00"E	233°06'42"
C6	13.56'	93.00'	6.79'	13.54'	S21°46'43"E	87°10'4"

LINE TABLE

LINE	LENGTH	BEARING
L1	75.00'	S89°27'44"W
L2	10.00'	N00°32'16"W
L3	65.00'	S89°27'44"W
L4	10.00'	S00°32'16"E
L5	40.00'	S89°13'17"W
L6	35.36'	N45°29'20"W
L7	12.50'	N45°30'51"W
L8	74.86'	S00°34'28"E
L9	0.20'	N89°27'50"E
L10	50.01'	N00°31'51"W

KEYED EASEMENTS

- 11 A Public Alley, Vacated By V-98-69 & Reserved As A Public Utility Easement, See Bosque Redondo Addition By Plat filed March 30, 1999 in Plat Book 99C, Page 69.
- 11 B Approximate location Utility and Transformer Easement as shown on plat filed March 30, 1999 in Plat Book 99C, Page 69.
- 12 C 5' Utility Easement as shown on plat filed in document filed October 12, 1998 in Book 9816, Page 850X.
- 19 D Permanent Roadway Easement granted by document filed October 12, 1998 in Book 9816, Page 850X.
- 19 E Existing 4' remainder of 7' Public Utility Easement Per Plat 96C-391
- 19 F 6' Public Utility Easement Per Plat 2010C-104
- 19 G Existing 10' Public Utility Easement filed 3/09/10 Doc. # 2010019707
- 19 H 5' MCI Metro Access Transmission Services, LLC underground utility easement Per Plat 2010C-104
- 19 I Existing 10' Public Utility Easement filed 3/09/10 Doc. # 2010019707
- 19 J Private Access Easement Per Plat 2010C-104 for the benefit of Lots 6 and 7, Block S, Bosque Redondo Addition, Maintenance of said easement to be the responsibility of the owner(s) of Lot 5B5-1-A.
- 19 K Vacated portion of Wyoming Blvd. N.E. by City Commission Vacation Ordinance #2032, filed September 28, 1982 in Book 0862, Page 31, reserving an easement for public utilities.
- 19 L Existing 20' Public Utility and Drainage Easement and Private Access Vacated By 10DBB-20096. The Public Utility and Drainage Easement to remain.
- 19 M Existing 20' Public Utility and Drainage Easement and Private Access Vacated By 10DBB-20096. The Public Utility and Drainage Easement to remain.
- 19 N 10' Access Easement as shown on plat filed January 15, 1982 in Vol. A8, Folio 120.
- 19 O 20' Utility Easement as shown on plat filed January 15, 1982 in Vol. A8, Folio 120.
- 19 P 20' Public Alley, Vacated By V-81-22 filed in Book Misc. 923, Page 158 in Volume 10, Plat Book D 181-A, reserved by the City of Albuquerque For Public Utilities.
- 19 Q Access Easement Agreement, granted by documents filed August 15, 2016 in Doc. No. 2016075811, Doc. No. 2016075812 and Doc. No. 2016075813, and filed October 31, 2016 in Doc. No. 2016102761.



SURV-TEK, INC.
Consulting Surveyors
8984 Valley View Drive, N.W. Albuquerque, New Mexico 87114
Phone: 505-497-5386
Fax: 505-497-5377