

VACATION EXHIBIT  
**LOT 46-A1, BLOCK C**  
**BOSQUE REDONDO ADDITION**

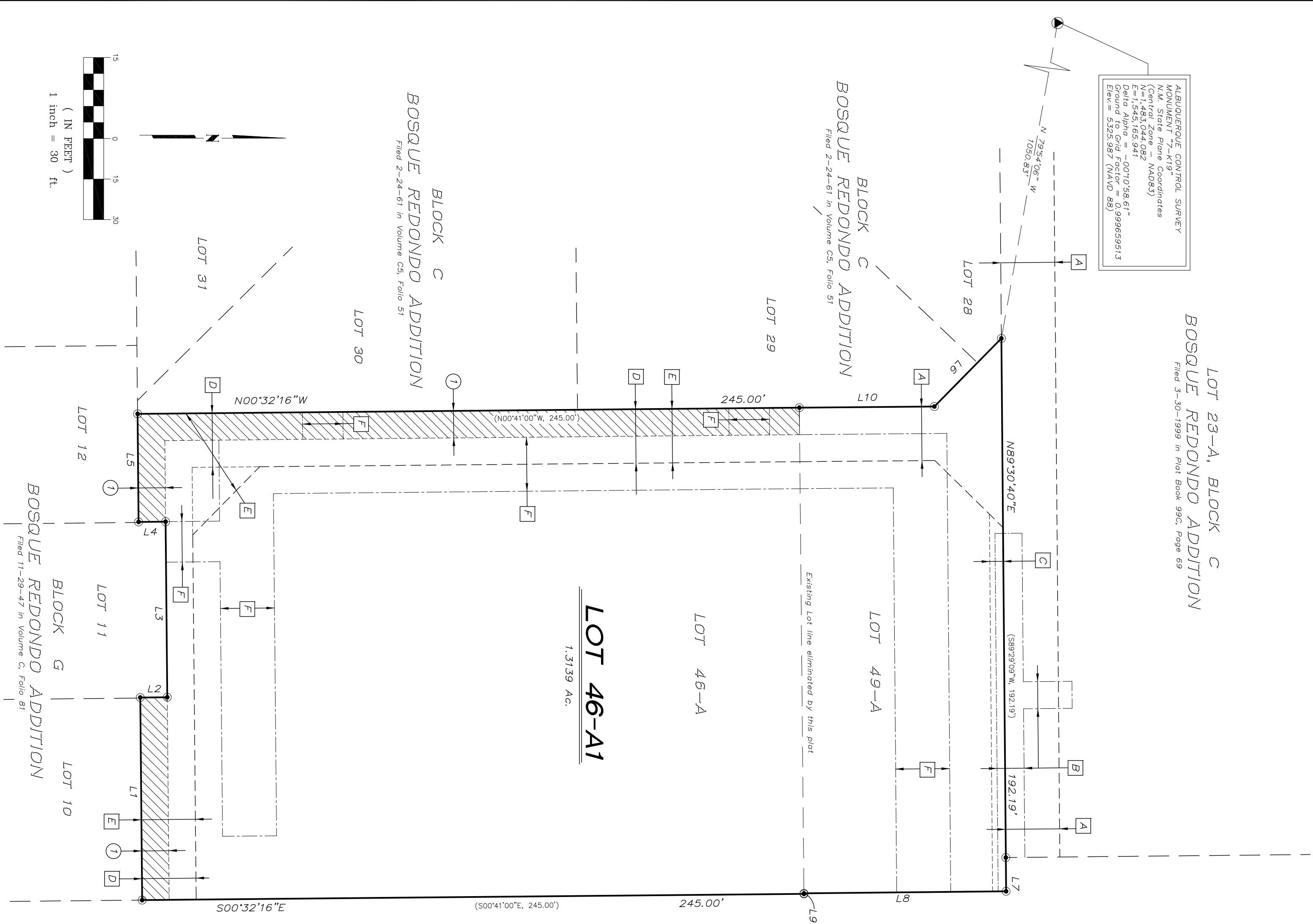
(BEING A REPLAT OF LOTS 46-A AND 49-A,  
 BLOCK C, BOSQUE REDONDO ADDITION)

**SITUATE WITHIN**  
**SECTION 19, TOWNSHIP 10 NORTH, RANGE 4 EAST**  
**NEW MEXICO PRINCIPAL MERIDIDN**  
**CITY OF ALBUQUERQUE**  
**BERNALILLO COUNTY, NEW MEXICO**

JUNE, 2017

**LOT 23-A, BLOCK C**  
**BOSQUE REDONDO ADDITION**  
 Filed 3-30-1999 in Plat Book 99C, Page 69

ALBUQUERQUE CONTROL SURVEY  
 MONUMENT "7-K19"  
 N.M. State Plane Coordinates  
 (Central Zone NAD83)  
 Station: 4982  
 E = 1545,165.941  
 Delta Alpha = -001°0'58.61"  
 Ground to Grid Factor = 0.999659513  
 Elev. = 5325.587 (NAVD 88)



**LOT 46-A1**  
 1.3139 Ac.

**EASEMENT LEGEND**

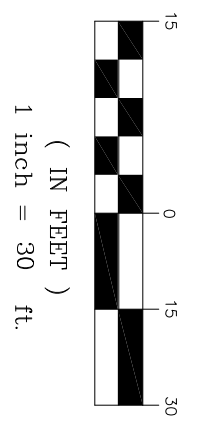
- A** Public Alley Vacated By V-98-69 & Reserved As A Public Utility, Drainage, Sanitary Sewer & Private Access Easement For Lots 27, 28 & 46A, Block C, Bosque Redondo Addition By Plat filed March 30, 1999 in Plat Book 99C, Page 69.
- B** Public Service Company of New Mexico Underground Easement as shown on plat filed March 30, 1999 in Plat Book 99C, Page 69.
- C** 5' Utility Easement as shown on plat filed in plat Volume C5, Folio 51.
- D** 20' Utility Easement as shown on plat filed January 15, 1982 in Vol. A8, Folio 120.
- E** 20' Public Alley Vacated By V-81-22, filed in Book Misc. 922, Page 158 and Quitclaim Deed filed April 15, 1982 in Book D 161-A, Reserved by the City of Albuquerque For Public Utilities.
- F** Access Easement Agreement granted by documents filed August 15, 2016 in Doc. No. 2016075811, Doc. No. 2016075812, and Doc. No. 2016075813, and filed October 31, 2016 in Doc. No. 2016102761.
- 1** 10' Access Easement as shown on plat filed January 15, 1982 in Vol. A8, Folio 120. VACATED BY 17DRB-\_\_\_\_\_.

**LINE TABLE**

| LINE | LENGTH | BEARING                       |
|------|--------|-------------------------------|
| L1   | 75.00  | S89°27'44\"W<br>(S8919'00\"W) |
| L2   | 10.00  | N00°32'16\"W<br>(N0041'00\"W) |
| L3   | 65.00  | S89°27'44\"W<br>(S8919'00\"W) |
| L4   | 10.00  | S00°32'16\"E<br>(S0041'00\"E) |
| L5   | 40.00  | S89°27'44\"W<br>(S8919'00\"W) |
| L6   | 35.36  | N45°29'20\"W<br>(N4530'51\"W) |
| L7   | 12.50  | N89°30'40\"E<br>(N8929'09\"E) |
| L8   | 74.86  | S00°34'32\"E<br>(S0036'03\"E) |
| L9   | 0.20   | N89°27'50\"E<br>(N0029'20\"W) |
| L10  | 50.01  | N00°29'20\"W<br>(N0031'51\"W) |

**PROPERTY CORNER LEGEND**

- All corners are a 5/8\" Rebar and cap or PK Nail and disc stamped \"L.S. 9750\" unless otherwise noted herein.



170241. DWG