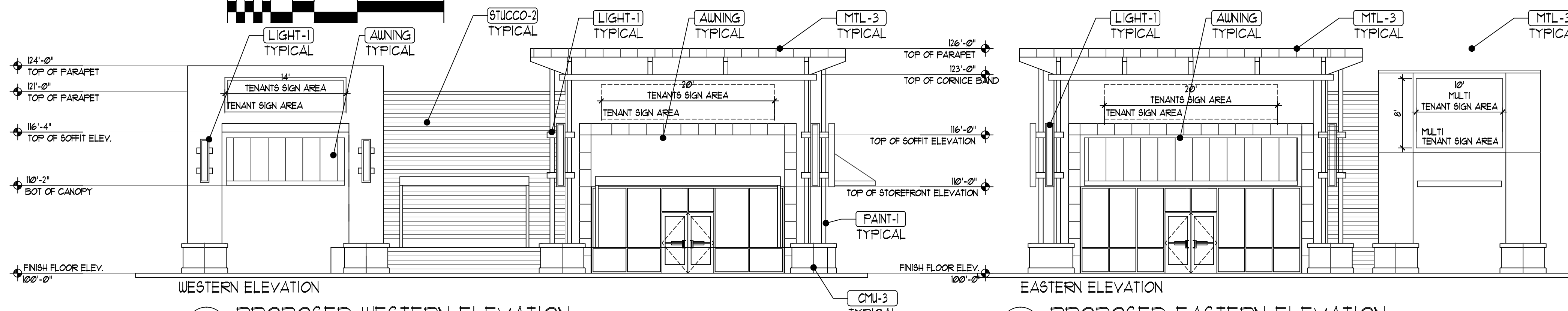


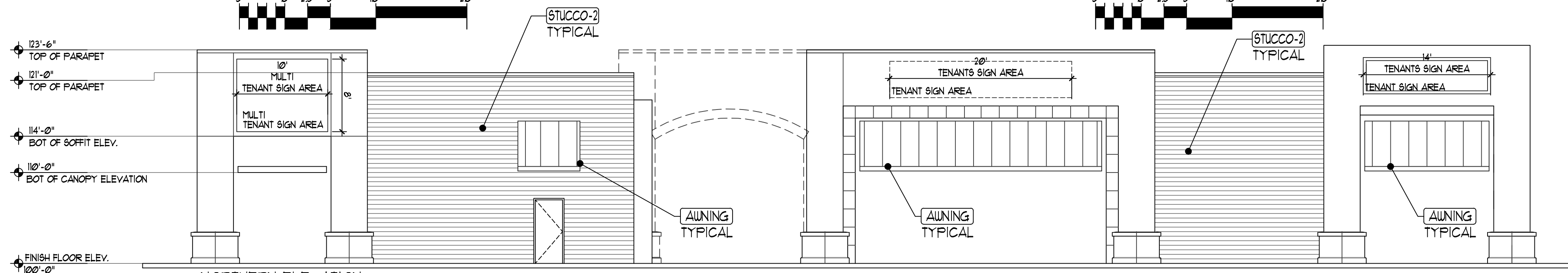
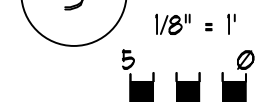
1 PROPOSED SOUTHERN ELEVATION



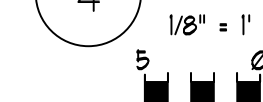
2 PROPOSED WESTERN ELEVATION



3 PROPOSED EASTERN ELEVATION



4 PROPOSED NORTHERN ELEVATION



EXTERIOR MATERIALS

CMU-1	EXISTING 12" VERTICAL SCORE CMU PAINTED FINISH - (PAINT TO MATCH DRYVIT 310 CHINA WHITE)
CMU-2	EXISTING 12" SPLIT FACED BLOCK PAINTED FINISH - (PAINT TO MATCH DRYVIT 310 CHINA WHITE)
CMU-3	4" SPLIT FACED VENEER BLOCK WITH CAP BLOCK PAINTED FINISH - (BLACK TO MATCH PAINT-1)
STUCCO-1	EXTERIOR STUCCO SYSTEM, COLOR = (DRYVIT 310 CHINA WHITE)
STUCCO-2	EXTERIOR STUCCO SYSTEM, COLOR = (SW 6143 BASKET BEIGE)
STUCCO-3	EXTERIOR STUCCO SYSTEM, COLOR = (DRYVIT 310 CHINA WHITE)
STUCCO-4	EXTERIOR STUCCO SYSTEM, COLOR = BLACK TO MATCH PAINT-1
STUCCO-5	EXTERIOR STUCCO SYSTEM, COLOR = (SW 6145 THATCH BROWN)
COPING-1	PREFINISHED METAL COPING OVER NEW EPS CORNICE TRIM COLOR = TO MATCH ADJACENT STUCCO COLOR
COPING-2	PREFINISHED METAL COPING OVER NEW EIFS TRIM DETAIL COLOR = TO MATCH ADJACENT EIFS COLOR COAT
MTL-1	PREFINISHED STANDING SEAM METAL ROOF COLOR= FIRESTONE KYNAR UNA CLAD AWARD BLUE.
MTL-2	PREFINISHED STANDING SEAM METAL ROOF COLOR= FIRESTONE KYNAR UNA CLAD MATTE BLACK.
MTL-3	EXTERIOR METAL FACIA AND SOFFIT TRIM OVER 5/8" FIRE RETARDANT PLY. SHEATING/ COLOR FIRESTONE KYNAR UNA CLAD MATTE BLACK)
PAINT-1	EXTERIOR PAINT (DECORATIVE ELEMENTS/AWNING STEEL) COLOR = FLAT BLACK
GLAZ-1	ALUMINUM STOREFRONT SYSTEM, SILVER KAWEER TRI-FAB 451T THERMALLY BROKEN SILVER ANNO. W/ TEMP. FROSTED GLAZING UNITS
SIGN-1	PROPOSED TENANT SIGN AREA
SIGN-2	MULTI-TENANT CABINET SIGN
LIGHT-1	EXTERIOR DECORATIVE LIGHT FIXTURE, TO MATCH CENTER STD.
LIGHT-2	EXTERIOR CANOPY LIGHTING/ WALL WASH MOUNTED BEHIND DECORATIVE CANOPY
HMD-1	EXTERIOR HOLLOW METAL DOOR AND FRAME, COLOR: PAINT TO MATCH ADJACENT STUCCO
CJ-1	1/4" STUCCO CONTROL JOINT
CJ-2	1/2" "V" REVAL JOINT IN PATTERN DESIGNATED ON ELEVATION
AWNING	STEEL DECORATIVE AWNING/ STEEL PAINTED TO MATCH P-1

REV	DATE	BY	REVISION
1			
2			
3			
4			
5			

**MODULUS ARCHITECTS**  
 220 COPPER AVE. N.W. SUITE 350  
 ALBUQUERQUE, NEW MEXICO 87102  
 PHONE (505) 338-1499 FAX (505) 338-1498

PROJECT TITLE	PASEO SAN PEDRO SEC. OF PASEO DEL NORTE AND SAN PEDRO ALBUQUERQUE, NEW MEXICO
PROJECT MANAGER	STEPHEN DUNBAR, AIA
JOB NO.	XXXXX
DRAWN BY	S
SHEET TITLE	BLDG-4 ELEVATIONS

DATE	10/22/15
SCALE	A1.4
AS NOTED	dt.