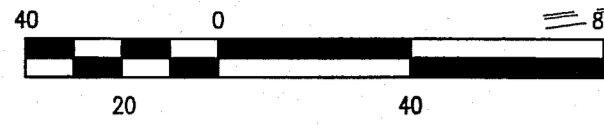


SCALE: 1" = 40'



LEXINGTON AVENUE N.E.

(50' R.O.W. PER PLAT 93C-219)

KEYED NOTES

EASEMENTS TO BE VACATED BY THIS REQUEST

- ① 10' UTILITY EASEMENT GRANTED BY PLAT C5-45
- ② 10' PNM AND MST&T EASEMENT GRANTED BY DOCUMENT EXECUTED 03-01-1957
- ④ 10' PNM AND US WEST COMMUNICATIONS, INC. EASEMENT GRANTED BY DOCUMENT EXECUTED 07-26-1995
- ⑤ 10' PNM EASEMENT GRANTED BY DOCUMENT FILED 06-30-2011, DOC. #2011060938
- ⑥ 20' PUBLIC WATER LINE EASEMENT GRANTED BY PLAT 93C-219

DOCUMENTARY EASEMENT TO BE VACATED BY THIS REQUEST

NON-SPECIFIC EASEMENT FOR RIGHT-OF-WAY FOR COMMUNICATIONS GRANTED BY DOCUMENT FILED 08-05-1937, BOOK 152, PAGE 133

EASEMENTS TO REMAIN

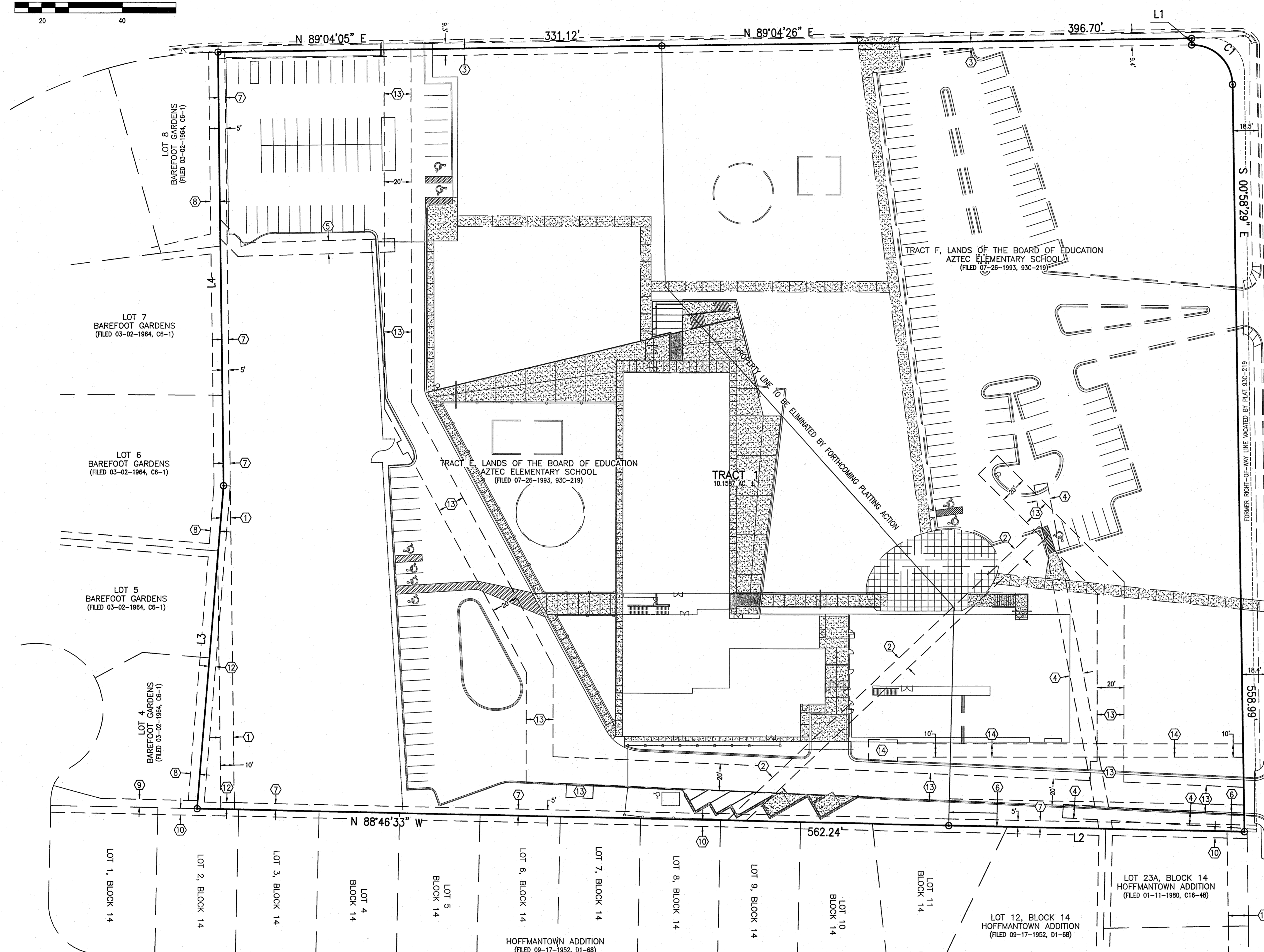
- ③ 5' PUBLIC ROADWAY EASEMENT GRANTED BY PLAT 93C-219
- ⑦ 5' UTILITY EASEMENT GRANTED BY PLAT C5-45 TO REMAIN

EASEMENTS - OFFSITE

- ⑧ 5' UTILITY EASEMENT GRANTED BY PLAT C6-1
- ⑨ 6' DRAINAGE AND UTILITY EASEMENT GRANTED BY PLAT C6-1
- ⑩ 5' UTILITY EASEMENT GRANTED BY PLAT D1-68
- ⑪ 15' UTILITY EASEMENT GRANTED BY PLAT B20-18

NEW EASEMENTS TO BE GRANTED BY FORTHCOMING PLATTING ACTION

- ⑫ 5' PUBLIC UTILITY EASEMENT
- ⑬ ABCWUA WATER LINE EASEMENT
- ⑭ PNM EASEMENT



BOUNDARY TABLES

LINE	DIRECTION	DISTANCE
L1	S 00°49'59" E	5.00'
L2	N 88°50'52" W	220.71'
L3	N 04°35'37" E	242.22'
L4	N 00°47'13" W	323.84'

CURVE	RADIUS	LENGTH	CHORD	CHORD BEARING	DELTA
C1	30.00'	47.24'	42.51'	S 45°53'00" E	90°13'11"

THE PURPOSE OF THIS SKETCH PLAT AND VACATION REQUEST IS TO DEMONSTRATE THE CREATION OF ONE TRACT FROM TRACTS E AND F, THE VACATION OF VARIOUS EASEMENTS, AND THE GRANTING OF EASEMENTS AS SHOWN OR NOTED ON THIS DRAWING

File Path: P:\MVA\2014\05\20141809\SKM Plot Date: 12-08-2015
File Name: 141809SKETCH.DWG Plot Time: 11:48 am



6010-B MIDWAY PARK BLVD. NE • ALBUQUERQUE, NEW MEXICO 87109
PHONE: 505.345.4250 • FAX: 505.345.4254 • www.highmesacg.com

SKETCH PLAT AND VACATION REQUEST
TRACT 1, AZTEC COMPLEX

SURVEYED BY: H.M.C.G.
DRAWN BY: T.N.T.
APPROVED BY: C.G.C.

NO.	DATE	BY	REVISIONS

JOB NO. 2014.180.9
DATE 12-2015
SHEET 1 OF 1