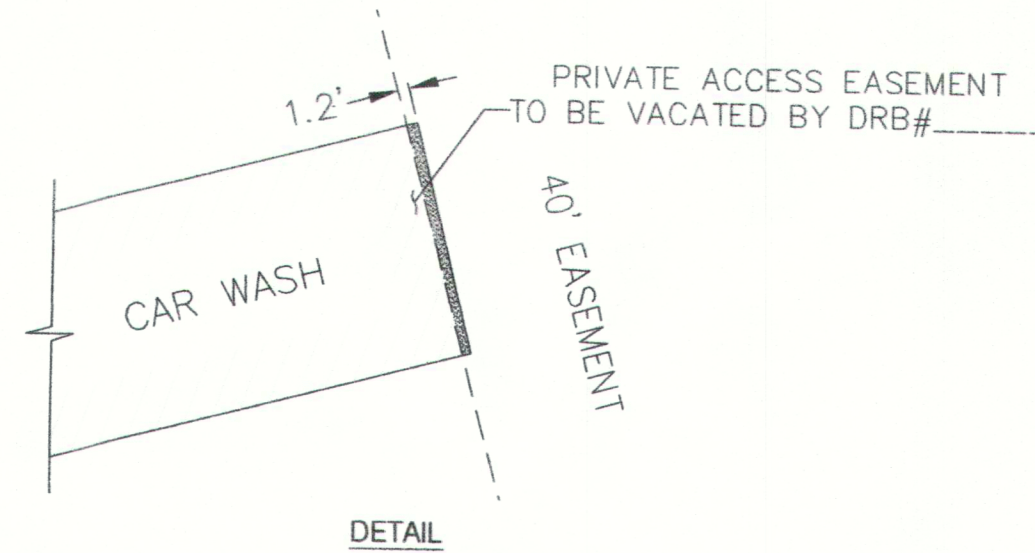
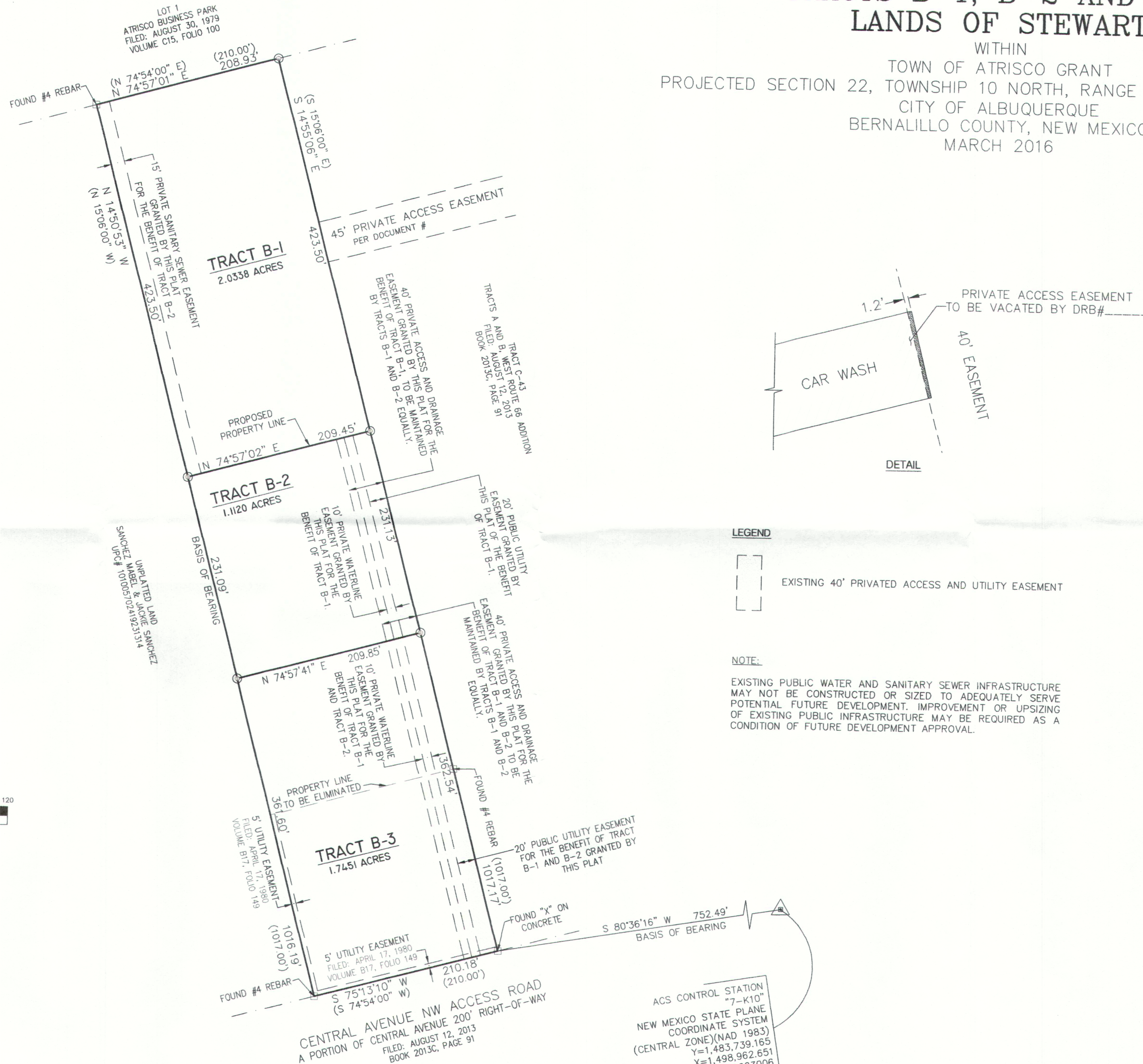


PLAT OF TRACTS B-1, B-2 AND B-3 LANDS OF STEWART

WITHIN
TOWN OF ATRISCO GRANT
PROJECTED SECTION 22, TOWNSHIP 10 NORTH, RANGE 2 EAST, N.M.P.M.
CITY OF ALBUQUERQUE
BERNALILLO COUNTY, NEW MEXICO
MARCH 2016

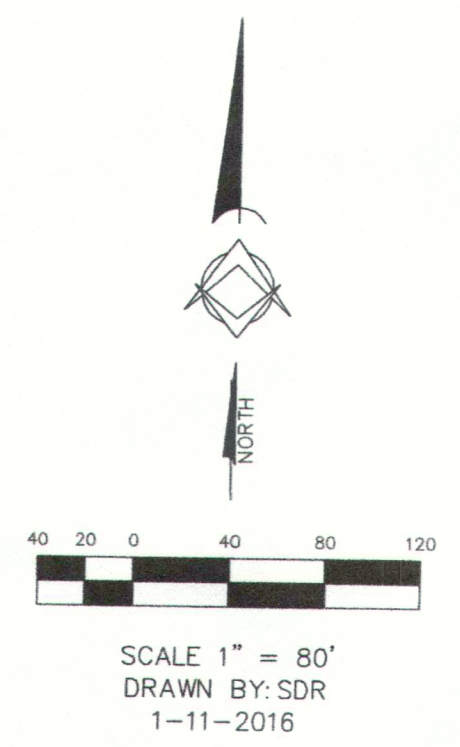


LEGEND

- EXISTING 40' PRIVATE ACCESS AND UTILITY EASEMENT

NOTE:

EXISTING PUBLIC WATER AND SANITARY SEWER INFRASTRUCTURE MAY NOT BE CONSTRUCTED OR SIZED TO ADEQUATELY SERVE POTENTIAL FUTURE DEVELOPMENT. IMPROVEMENT OR UPSIZING OF EXISTING PUBLIC INFRASTRUCTURE MAY BE REQUIRED AS A CONDITION OF FUTURE DEVELOPMENT APPROVAL.



MONUMENT LEGEND

- FOUND MONUMENT AS NOTED
- SET 1/2" REBAR W/PLASTIC CAP STAMPED "PLS 11463" UNLESS OTHERWISE NOTED

ACS CONTROL STATION
"7-K10"
NEW MEXICO STATE PLANE
COORDINATE SYSTEM
(CENTRAL ZONE)(NAD 1983)
Y=1,483,739.165
X=1,498,962.651
G-G=0.999683006
Δα = -00°16'18.14"

THE SURVEY OFFICE, LLC
333 LOMAS BOULEVARD N.E.
ALBUQUERQUE, NEW MEXICO 87102
PHONE: (505) 998-0303
FAX: (505) 998-0306