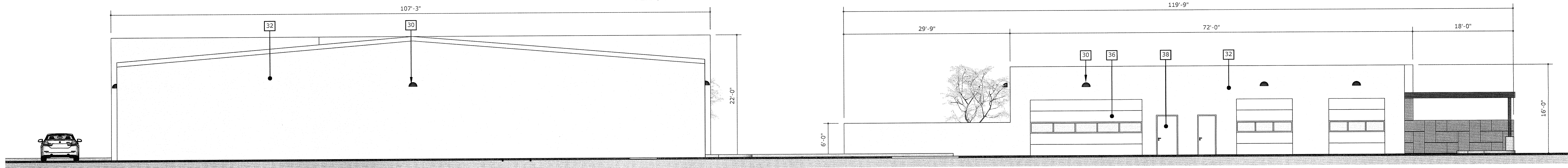
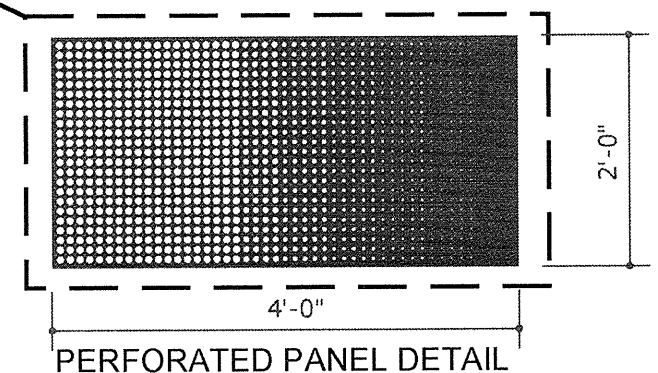
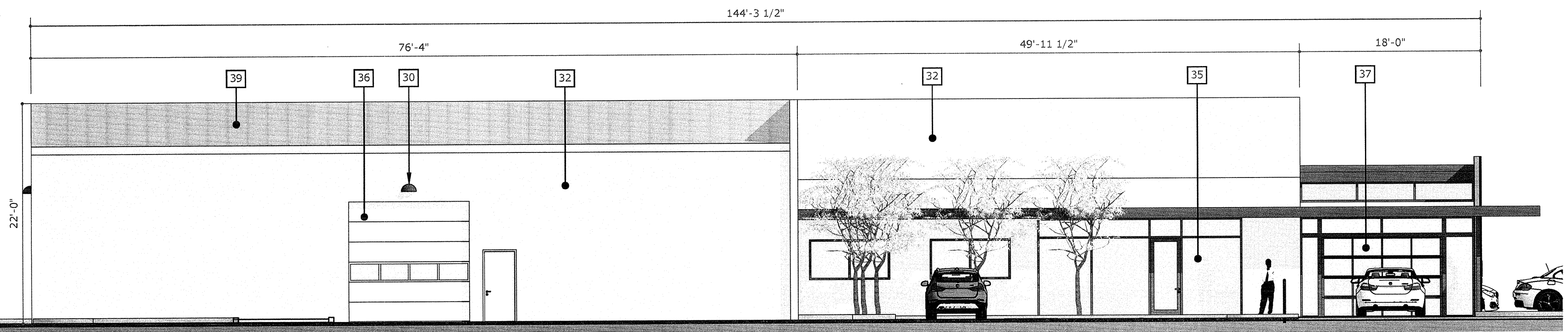


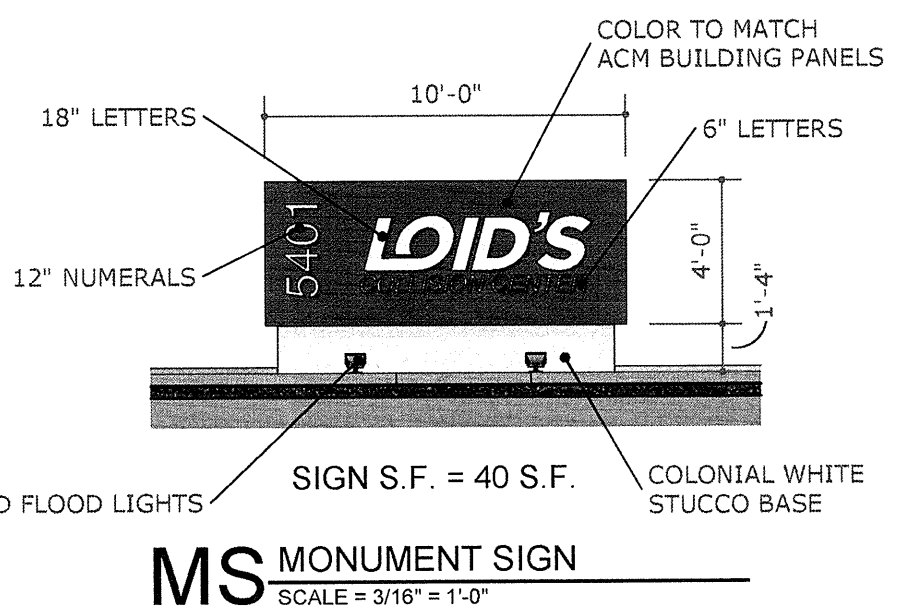
1 SOUTH ELEVATION (OVERALL)
SCALE = 1/8" = 1'-0"



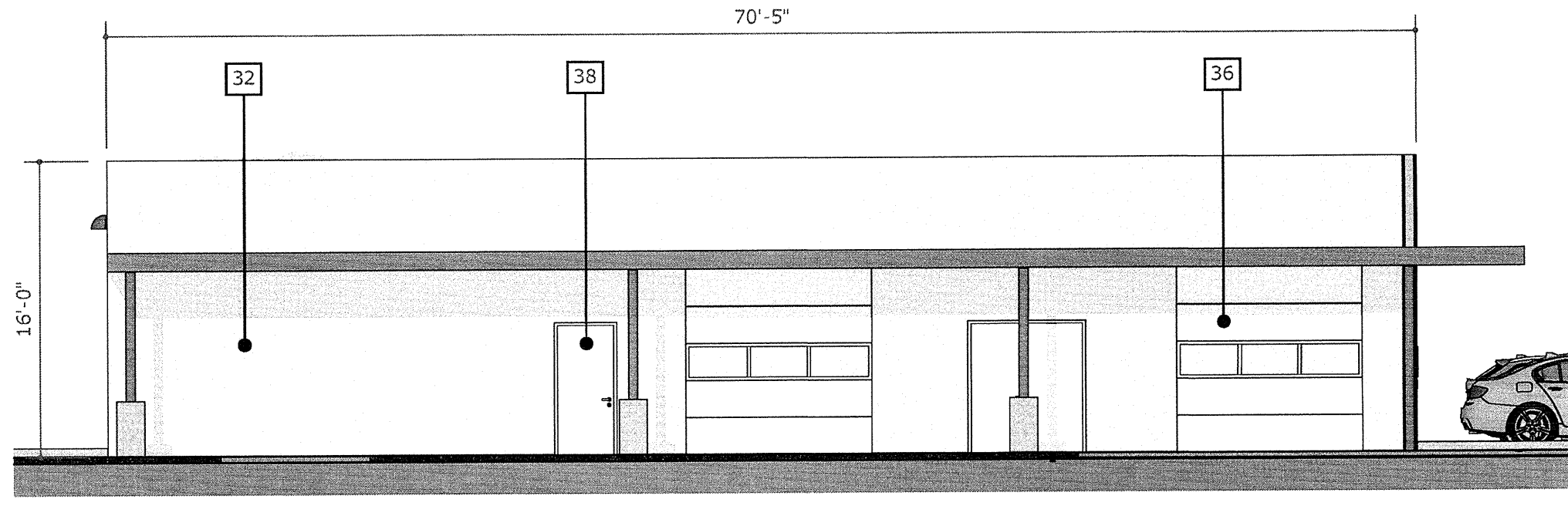
2 NORTH ELEVATION (OVERALL)
SCALE = 1/8" = 1'-0"



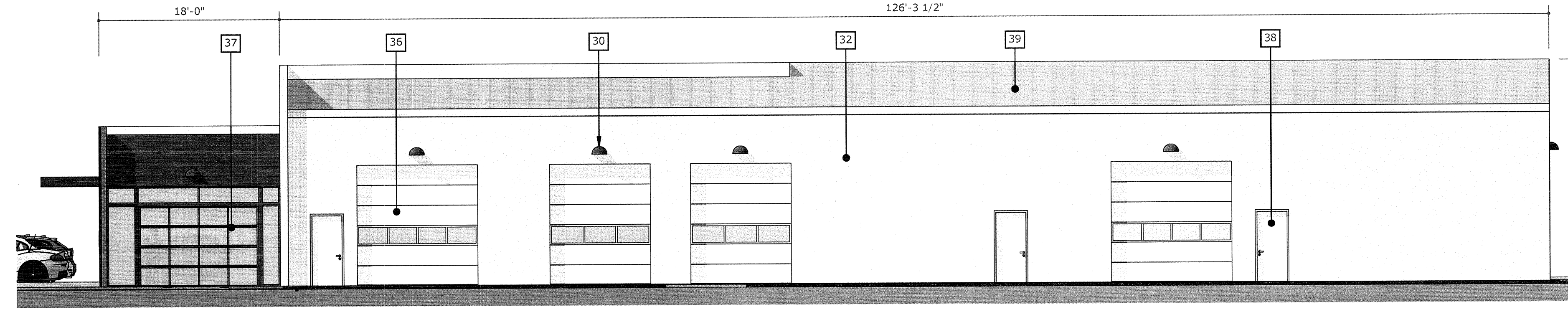
3 WEST ELEVATION - BODY SHOP
SCALE = 1/8" = 1'-0"



MS MONUMENT SIGN
SCALE = 3/16" = 1'-0"

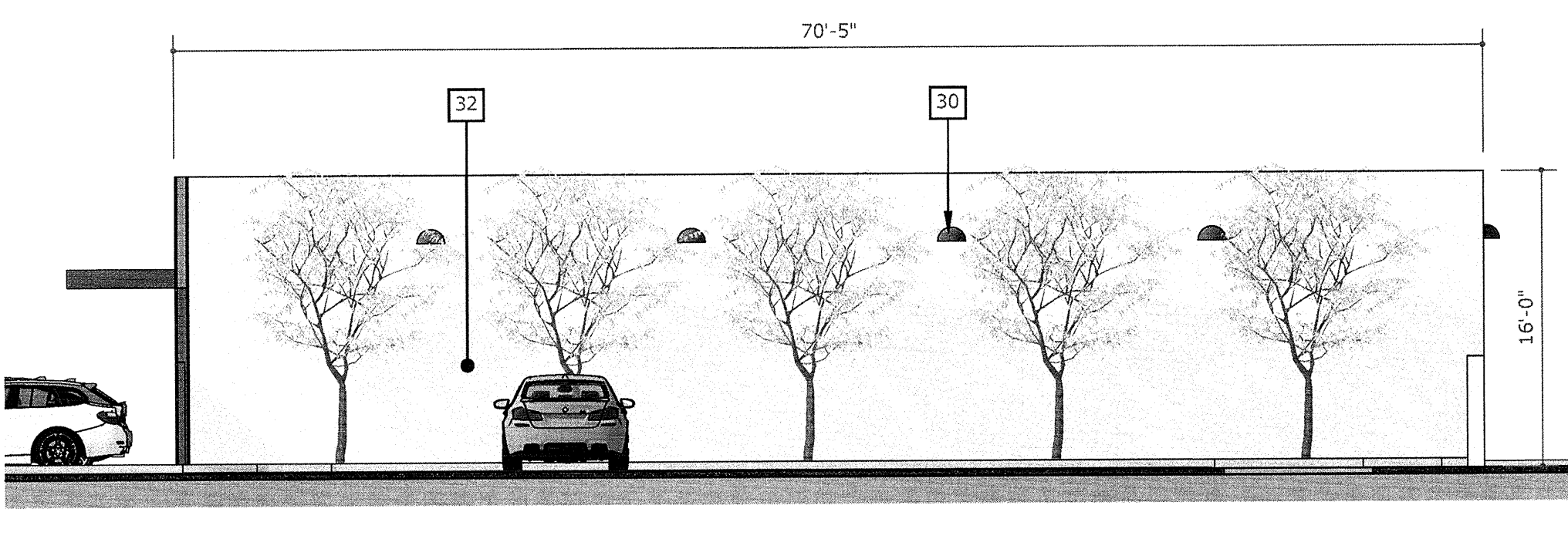


4 WEST ELEVATION - PAINT SHOP
SCALE = 1/8" = 1'-0"



5 EAST ELEVATION - BODY SHOP
SCALE = 1/8" = 1'-0"

- KEYNOTES**
- 30 FULLY SHIELDED WALL MOUNTED LED LIGHT (13'-0" ABOVE ADJACENT GRADE)
 - 32 3 COAT CEMENTITIOUS STUCCO, COLOR: EL REY COLONIAL WHITE
 - 33 2'x4' ALUMINUM COMPOSITE PANELS (ACP) IN HERRINGBONE PATTERN, COLOR: GRAPHITE GRAY
 - 34 2'x4'x11ga. ALUMINUM PERFORATED PANELS OVER STOREFRONT GLAZING, COLOR: GRAPHITE GRAY
 - 35 ALUMINUM STOREFRONT FRAMING (COLOR: BLACK) WITH CLEAR INSULATED GLASS
 - 36 SECTIONAL OVERHEAD DOORS WITH CLEAR LITES, COLOR: WHITE
 - 37 ALUMINUM FULL-VIEW GLASS SECTIONAL OVERHEAD DOORS
 - 38 HOLLOW METAL DOOR AND FRAME, COLOR: WHITE
 - 39 EXISTING STANDING SEAM METAL ROOF, COLOR: SHASTA WHITE



6 EAST ELEVATION - PAINT SHOP
SCALE = 1/8" = 1'-0"