

VICINITY MAP (NTS)

ZONE ATLAS MAP C-20

LEGAL DESCRIPTION

TRACT OF LAND SITUATE WITHIN PROJECT SECTION 17, TOWNSHIP 11 NORTH, RANGE 4 EAST, NEW MEXICO PRINCIPAL MERIDIAN, THE ELENA GALLEGOS GRANT, CITY OF ALBUQUERQUE, BERNALILLO COUNTY, NEW MEXICO BEING ALL OF LOTS 25 AND 26, BLOCK 9, TRACT 3, UNIT 3, NORTH ALBUQUERQUE ACRES AS THE SAME IS SHOWN AND DESIGNATED ON SAID PLAT FILED FOR RECORD IN THE OFFICE OF THE COUNTY CLERK OF BERNALILLO COUNTY, NEW MEXICO AND CONTAINS 1.7791 ACRES MORE OR LESS.

SUBDIVISION DATA

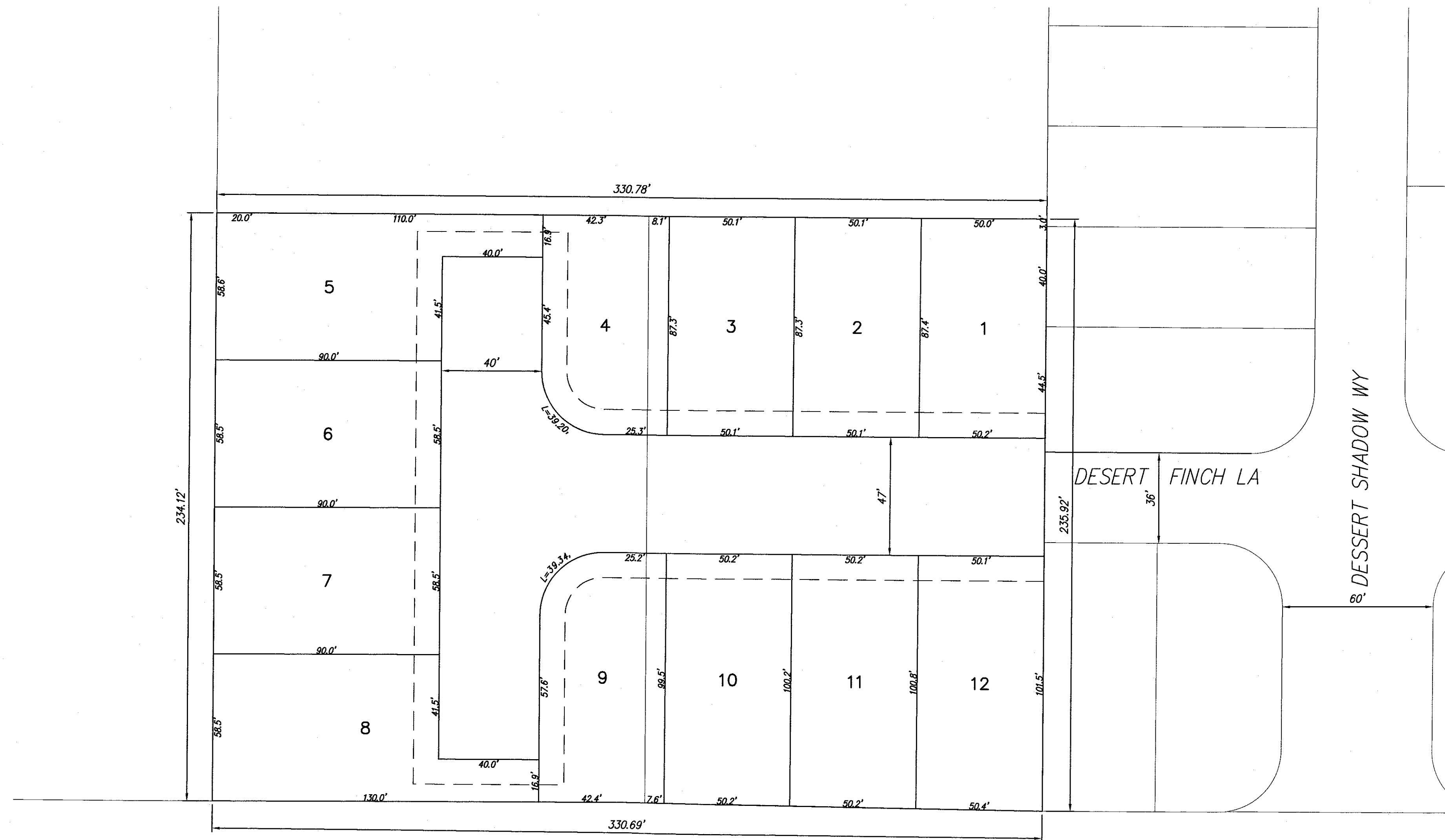
GROSS ACREAGE 1.7791 Ac.
 ZONE ATLAS NO. C-20-Z
 NO. OF LOTS CREATED 12 LOTS

PURPOSE OF PLAT

1. SUBDIVIDE LOTS 25 AND 26 BLOCK 9, TRACT 3, UNIT 3, NORTH ALBUQUERQUE ACRES INTO 12 RESIDENTIAL LOTS.
2. DEDICATE RIGHT-OF-WAY AS SHOWN.
3. GRANT NEW EASEMENTS AS SHOWN.

SITE BENCHMARK

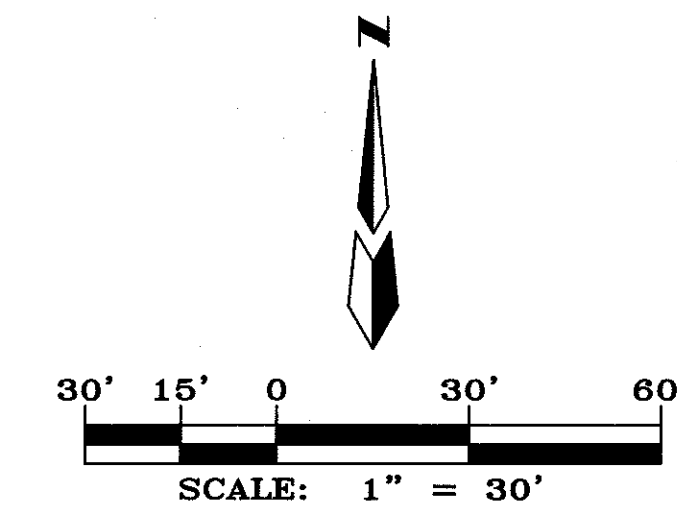
AGRS MONUMENT
 "10_C19"
 ELEVATION=5472.155
 (NAVD 1988)




SKETCH PLAT
 HOLLY AVENUE SUBDIVISION
 WITHIN
 PROJECTED SECTION 17
 TOWNSHIP 11 NORTH, RANGE 4 EAST, NMPM
 ELENA GALLEGOS GRANT
 CITY OF ALBUQUERQUE
 BERNALILLO COUNTY, NEW MEXICO
 JUNE, 2016

F:\A16\JOBS\A16036 - Holly Ave. Subdivision\PLATS\SKETCH PLATS\A16036 SKETCH.dwg, 6/10/2016 8:02:03 AM, SPS

ENGINEERS	SURVEYOR	OWNERS
D. MARK GOODWIN & ASSOCIATES, P.A. CONSULTING ENGINEERS P.O. BOX 90606 ALBUQUERQUE, N.M. 87199 (505) 828-2200	ALDRICH LAND SURVEY P.O. BOX 30701 ALBUQUERQUE, N.M. 87190-0701 (505) 884-1990	AIFeld P.O. BOX 37438 ALBUQUERQUE, N.M. 87176 (505) 875-1641



		MARK GOODWIN & ASSOCIATES, P.A. CONSULTING ENGINEERS P.O. BOX 90606 ALBUQUERQUE, NEW MEXICO 87199 (505)828-2200, FAX (505)797-9539	
Designed: DMG	Drawn: SPS	Checked: DMG	Sheet 1 of 1
Scale: 1" = 30'	Date: 6/9/2016	Job: A16036	