

VICINITY MAP ZONE ATLAS MAP A-13

LEGAL DESCRIPTION

TRACT OF LAND SITUATE WITHIN PROJECTED SECTION 6, TOWNSHIP 11 NORTH, RANGE 3 EAST, NMPM, TOWN OF ALAMEDA GRANT, CITY OF ALBUQUERQUE, BERNALILLO COUNTY, NEW MEXICO BEING ALL OF TRACTS A, B, & C CIBOLOA LOOP SUBDIVISION AS THE SAME IS SHOWN AND DESIGNATED ON SAID PLAT FILED FOR RECORD IN THE OFFICE OF THE COUNTY CLERK OF BERNALILLO COUNTY, NEW MEXICO ON APRIL 29, 2009 IN BOOK 2009C, PAGE 66 AND CONTAINS 26.3127 ACRES MORE OR LESS.

SUBDIVISION DATA

GROSS ACREAGE 26.3127 Ac.
 ZONE ATLAS NO. A-13-Z
 NO. OF LOTS CREATED 4 LOTS

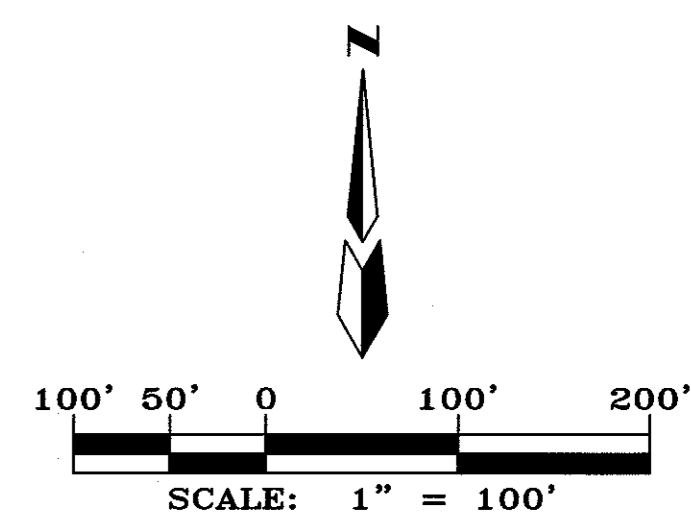
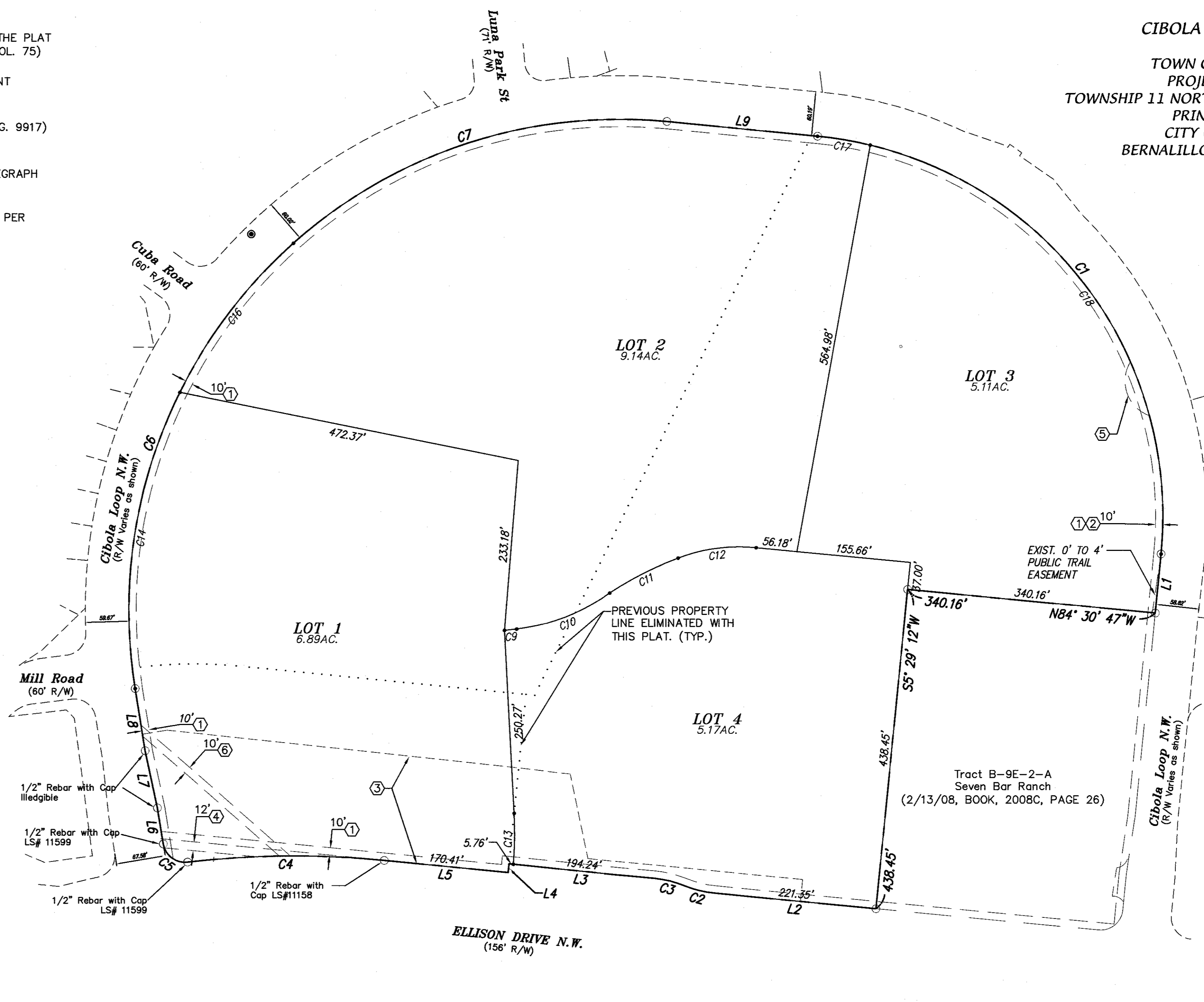
PURPOSE OF PLAT

1. SUBDIVIDE TRACTS A, B, & C CIBOLA LOOP SUBDIVISION INTO 4 COMERCIAL LOTS.
2. DEDICATE RIGHT-OF-WAY AS SHOWN.
3. GRANT NEW EASEMENTS AS SHOWN.

Easement Notes

- ① EXISTING 10 FOOT UTILITY EASEMENT AS SHOWN ON THE PLAT "TRACTS B-9D THRU B-9K" (12/21/89, VOL. C40, FOL. 75)
- ② EXISTING 10 FOOT PNM AND MOUNTAIN BELL EASEMENT (2/21/86, BK. 323A, PG. 942)
- ③ EXISTING DRAINAGE EASEMENT (5/5/99, BK. 9906, PG. 9917)
- ④ EXISTING 12' MOUNTAIN STATES TELEPHONE AND TELEGRAPH CO. EASEMENT (11/8/85, BK. C28, PG. 161)
- ⑤ EXISTING 50' RADIUS TEMPORARY TURNING EASEMENT PER PLAT (11/8/85, BK. C28, PG. 161)
- ⑥ EXISTING NEW MEXICO UTILITIES SEWER EASEMENT (12/5/74, BK. 397, PG. 673)

SKETCH PLAT
 CIBOLA LOOP SUBDIVISION
 WITHIN
 TOWN OF ALAMEDA GRANT
 PROJECTED SECTION 6,
 TOWNSHIP 11 NORTH, RANGE 3 EAST, NEW MEXICO
 PRINCIPAL MERIDIAN
 CITY OF ALBUQUERQUE
 BERNALILLO COUNTY, NEW MEXICO
 MAY, 2016



Curve Table					
Curve #	Length	Radius	Delta	Chord Bearing	Chord Length
C1	823.10'	524.00'	90°00'01"	N39°33'00"W	741.05'
C2	42.57'	150.00'	16°15'37"	S76°22'29"E	42.43'
C3	42.57'	150.00'	16°15'37"	S76°22'29"E	42.43'
C4	269.61'	1278.00'	12°05'14"	N89°27'06"E	269.11'
C5	45.65'	30.00'	87°11'40"	S52°59'41"E	41.38'
C6	673.26'	670.00'	57°34'29"	S19°23'24"W	645.29'
C7	552.79'	670.00'	47°16'21"	S71°48'49"W	537.24'
C9	16.67'	1045.12'	0°54'49"	S83°23'37"W	16.67'
C10	138.37'	274.24'	28°54'34"	S68°28'56"W	136.91'
C11	105.15'	492.66'	12°13'45"	S63°02'06"W	104.95'
C12	108.33'	236.00'	26°18'02"	S82°17'59"W	107.38'
C13	69.69'	500.06'	7°59'04"	N0°46'01"E	69.63'
C14	415.66'	670.00'	35°32'46"	N8°22'32"E	409.03'
C15	415.66'	670.00'	35°32'46"	N8°22'32"E	409.03'
C16	257.60'	670.00'	22°01'44"	N37°09'46"E	256.01'
C17	73.30'	524.00'	8°00'52"	S80°32'35"E	73.24'
C18	749.80'	524.00'	81°59'09"	S35°32'34"E	687.45'

Line Table		
Line #	Direction	Length
L1	N5°27'00"E	81.53'
L2	N84°30'17"W	221.35'
L3	N84°30'17"W	200.00'
L4	N5°29'41"E	12.00'
L5	S84°30'17"E	170.41'
L6	S9°23'51"E	50.00'
L7	S12°15'36"E	80.10'
L8	S9°23'51"E	86.26'
L9	N84°33'01"W	206.75'

ENGINEERS D. MARK GOODWIN & ASSOCIATES, P.A. CONSULTING ENGINEERS P.O. BOX 90606 ALBUQUERQUE, N.M. 87199 (505) 828-2200	SURVEYOR ALDRICH LAND SURVEY P.O. BOX 30701 ALBUQUERQUE, N.M. 87190-0701 (505) 884-1990	OWNERS DUNLOP PARTNERSHIP P.O. BOX 14798 ALBUQUERQUE, N.M. 87191 (505) 235-0754
---	--	--

dmg MARK GOODWIN & ASSOCIATES, P.A.
 CONSULTING ENGINEERS
 P.O. BOX 90606
 ALBUQUERQUE, NEW MEXICO 87199
 (505) 828-2200, FAX (505) 797-9539

Designed: JM	Drawn: SPS	Checked: DMG	Sheet I of I
Scale: 1" = 200'	Date: 2/16/2006	Job: A05019	

F:\A16JOBS\A16025 Cibola Loop 2016\PLATS\SKETCH PLATS\A16025 SKETCH 1.dwg, 6/23/2016 8:27:12 AM, SPS