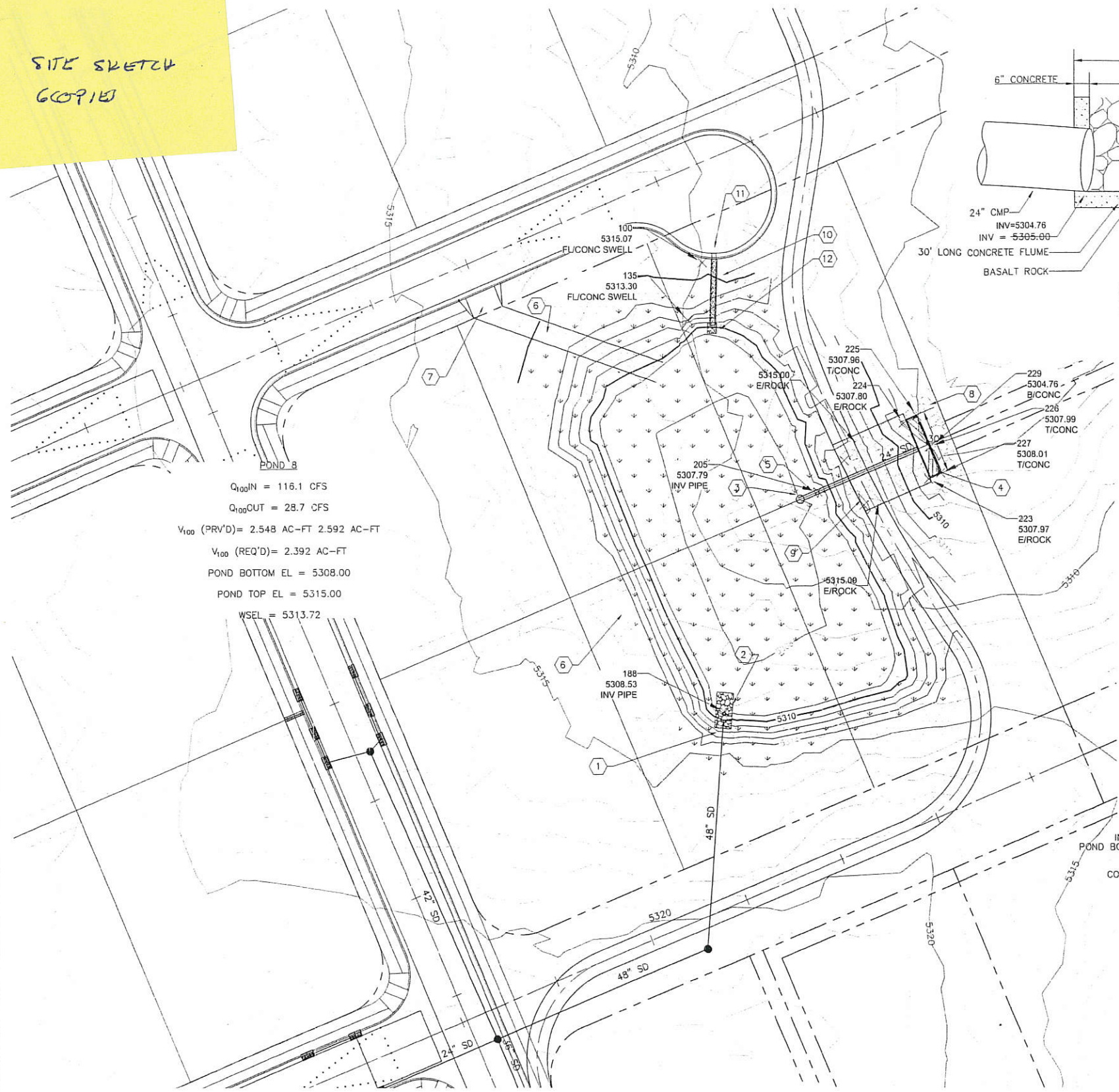
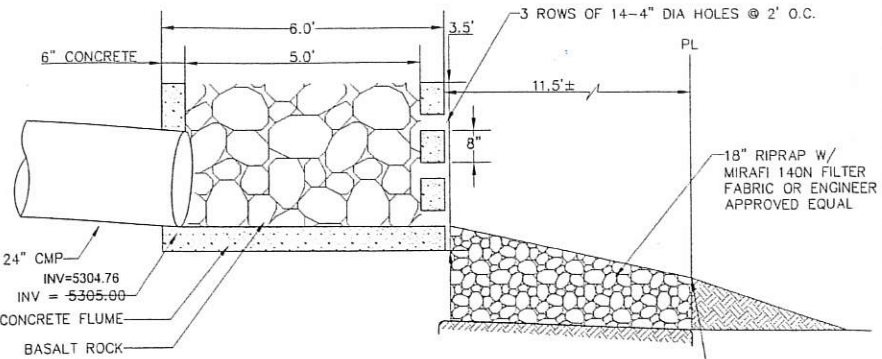


SITE SKETCH
6091E

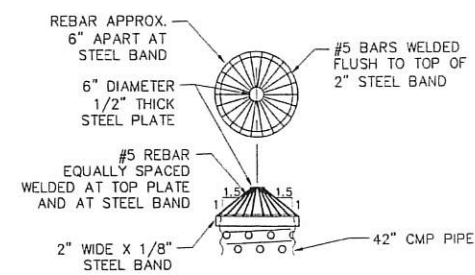


$Q_{100IN} = 116.1$ CFS
 $Q_{100OUT} = 28.7$ CFS
 $V_{100} (PRV'D) = 2.548$ AC-FT 2.592 AC-FT
 $V_{100} (REQ'D) = 2.392$ AC-FT
 POND BOTTOM EL = 5308.00
 POND TOP EL = 5315.00
 WSEL = 5313.72

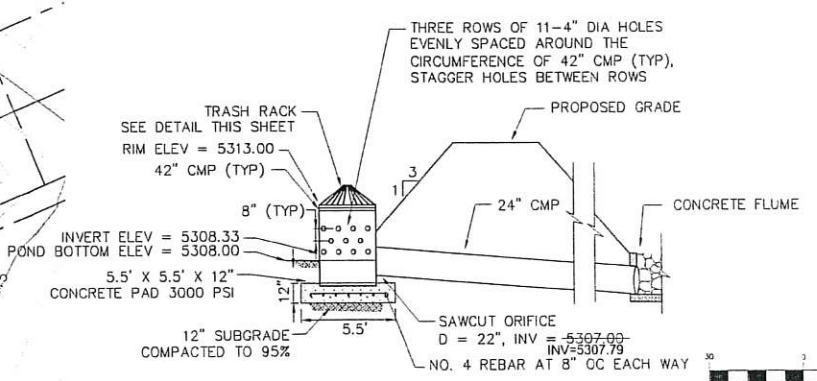
POND 8
 SHALL BE MAINTAINED BY COA OPEN SPACE
 EXCEPT FOR INLET/OUTLET STRUCTURES
 (ITEMS 1, 2, 3, 4, 5, 8, 9, 10, 12,) WHICH WILL BE
 MAINTAINED BY COA STORM DRAIN
 MAINTENANCE.



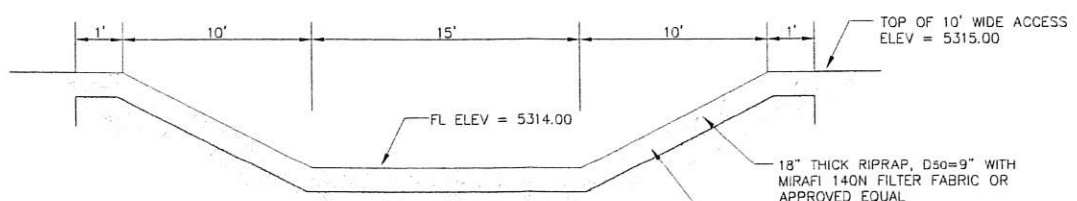
CONCRETE FLUME DETAIL
SCALE: 1"=2'



TRASH RACK DETAIL
NTS



CMP RISER DETAIL
NTS



EMERGENCY SPILLWAY
NTS

GENERAL SHEET NOTES		AS-BUILT INFORMATION	
1. NO ROCK EXCAVATION ALLOWED PER V.C.S.P.		CONTRACTOR	DATE
SHEET KEYNOTES 1. INSTALL 108 LF 48" PIPE @ 0.46%, INV = 5308.53, 1-48" SD POND INLET STRUCTURE, SEE SHEET 124. 2. INSTALL 8'W X 17'L X 18"D, D ₅₀ =9" RIPRAP BLANKET WITH MIRAFI 140N FILTER FABRIC OR APPROVED EQUAL. 3. INSTALL 42" RISER, 3 ROW OF 11-4" DIA STAGGERED HOLES. SEE DETAIL THIS SHEET. 4. INSTALL 30' LONG, 5' WIDE CONCRETE FLUME. SEE DETAIL THIS SHEET. 5. INSTALL 62 LF 24" CMP, S = 3.23%, INV DOWN = 5305.00, INV=5304.76 6. INSTALL 12' WIDE GRAVEL MAINTENANCE ACCESS. 6" AGGREGATE BASE COURSE, 95% MIN COMPACTION PER ASTM D 1557. 7. STA 50+50, 14' RT, INSTALL 15' WIDE DRIVEPAD PER COA STD DWG 2425. 8. INSTALL 11.5'W X 50'L X 18"D, D ₅₀ =6" RIPRAP BLANKET WITH MIRAFI 140N FILTER FABRIC OR APPROVED EQUAL. 9. INSTALL 15'L X 10'W EMERGENCY SPILLWAY, SEE DETAIL THIS SHEET. 10. INSTALL 2' WIDE, 31' LONG CONCRETE RUNDOWN, S _{MAX} = 3:1. SEE SHEET 124 FOR DETAIL. 11. STA 51+61.50, 43.7' RT, INSTALL 2' WIDE CURB CUT. 12. INSTALL 5'W X 5'L X 18"D, D ₅₀ =6" RIPRAP BLANKET WITH MIRAFI 140N FILTER FABRIC OR APPROVED EQUAL.		DATE	DATE
		DATE	DATE
		DATE	DATE
		DATE	DATE

BENCH MARKS		SURVEY INFORMATION	
ACS BRASS CAP, STAMPED "3-E10"	SET IN TOP OF CONCRETE POST PROJECTING 0.30 FT. ABOVE GROUND. LOCATED APPROX. 225' E OF THE INTERSECTION OF RIM ROCK DR. NW AND MARGOLD DR. NW (NAD 1983). X 1499059.808, Y 1512627.946	DATE	DATE
		BY	BY
		NO.	NO.

ENGINEER'S SEAL		REVISIONS	
		NO.	DATE
		REMARKS	BY
DESIGNED BY	STAFF	DATE	DATE
DRAWN BY	STAFF	DATE	DATE
CHECKED BY	STAFF	DATE	DATE

CITY OF ALBUQUERQUE
 DEPARTMENT OF MUNICIPAL DEVELOPMENT
 ENGINEERING DIVISION
SPECIAL ASSESSMENT DISTRICT 228-VOL. 1
POND 8 GRADING PLAN

Design Review Committee City Engineer Approval
 Ms./Day/Yr Ms./Day/Yr
 Last Design Update

WCEA # 0840010400 DECEMBER 2011
 City Project No 693391 Zone Map No. D-10, D-11 Sheet 113R Of 156