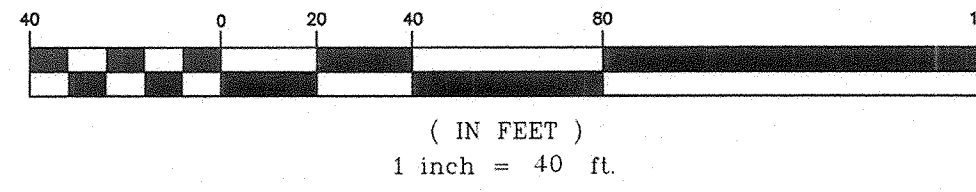


LINE TABLE		
LINE	BEARING	DISTANCE
L1	N67°13'06"E (N67°13'54"E)	8.80' (8.80')
L2	N67°13'06"E (N67°13'54"E)	59.28' (59.28')
L3	N67°13'06"E	31.90'

CURVE TABLE						
CURVE	LENGTH	RADIUS	DELTA	TANGENT	CHORD	CHORD DIRECTION
C1	73.86' (73.86')	30.63' (30.63')	138°09'39"	80.13'	57.22' (57.22')	S63°24'51"W (S63°25'39"W)
C2	4.38' (4.38')	24.37' (24.37')	10°18'28"	2.20'	4.38' (4.38')	N52°39'33"W (N52°38'45"W)

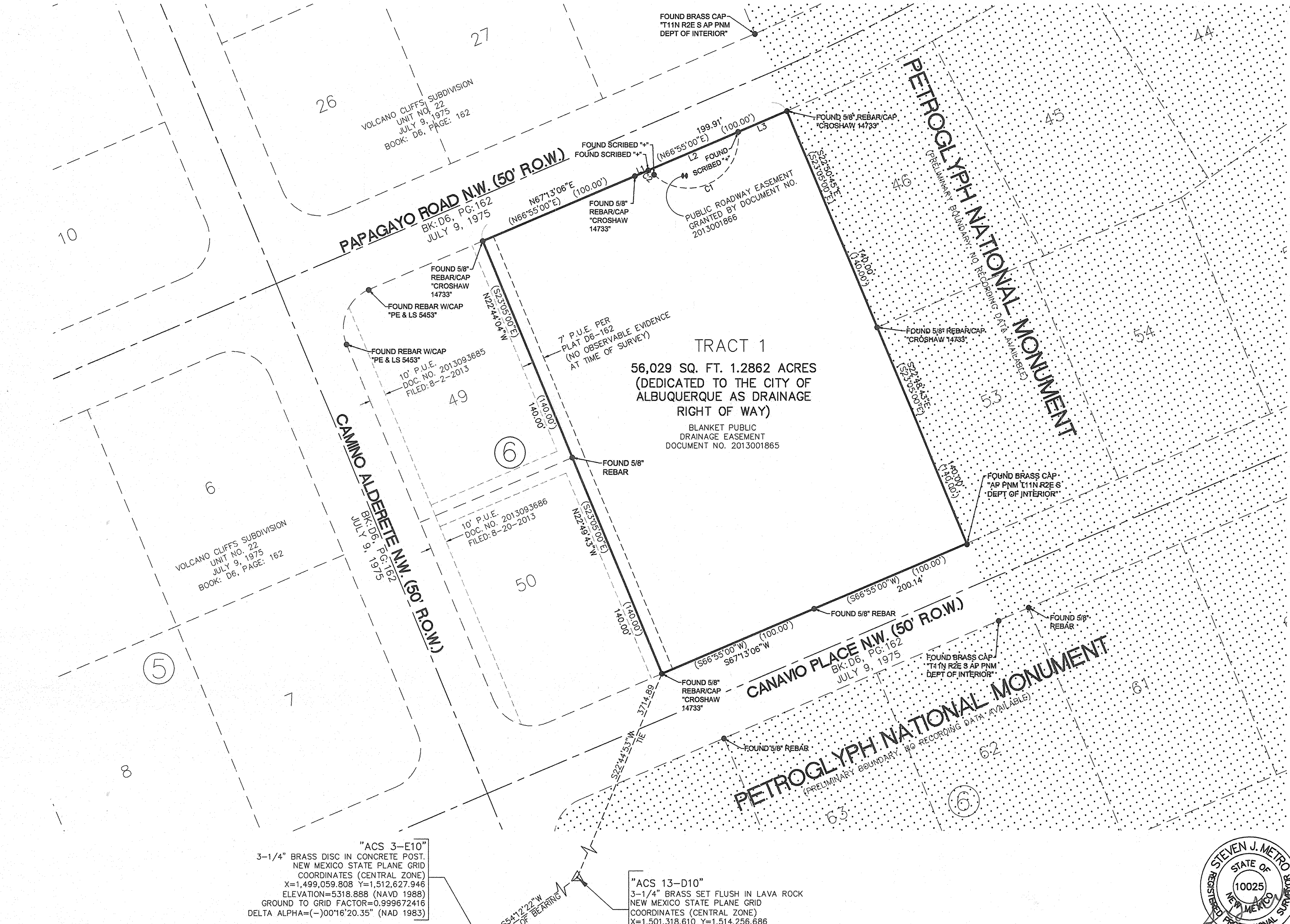
GRAPHIC SCALE



PLAT OF
TRACT 1,
VOLCANO CLIFFS SUBDIVISION, UNIT 22
A REPLAT OF A PORTION OF BLOCK 6
VOLCANO CLIFFS SUBDIVISION, UNIT 22
WITHIN SECTION 22 & 23,
TOWNSHIP 11 NORTH, RANGE 2 EAST
NEW MEXICO PRINCIPAL MERIDIAN
CITY OF ALBUQUERQUE
BERNALILLO COUNTY, NEW MEXICO
AUGUST 2016



LEGEND
● FOUND PROPERTY CORNER AS NOTED



"ACS 3-E10"
3-1/4" BRASS DISC IN CONCRETE POST.
NEW MEXICO STATE PLANE GRID
COORDINATES (CENTRAL ZONE)
X=1,499,059.808 Y=1,512,627.946
ELEVATION=5318.888 (NAVD 1988)
GROUND TO GRID FACTOR=0.999672416
DELTA ALPHA=(-)00°16'20.35" (NAD 1983)

"ACS 13-D10"
3-1/4" BRASS SET FLUSH IN LAVA ROCK
NEW MEXICO STATE PLANE GRID
COORDINATES (CENTRAL ZONE)
X=1,501,318.610 Y=1,514,256.686
GROUND TO GRID FACTOR=0.999672421
DELTA ALPHA=(-)00°16'04.84" (NAD 1983)



WILSON & COMPANY
4900 LANG AVENUE N.E.
ALBUQUERQUE, NEW MEXICO
87109
(505) 348-4000
SHEET 2 OF 3