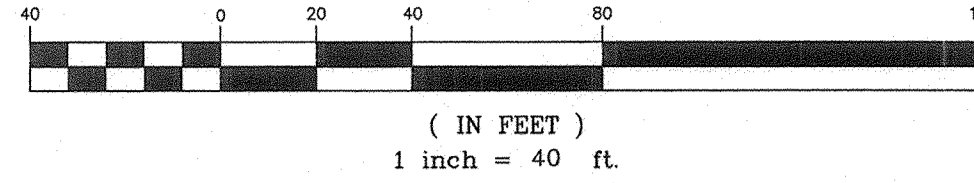


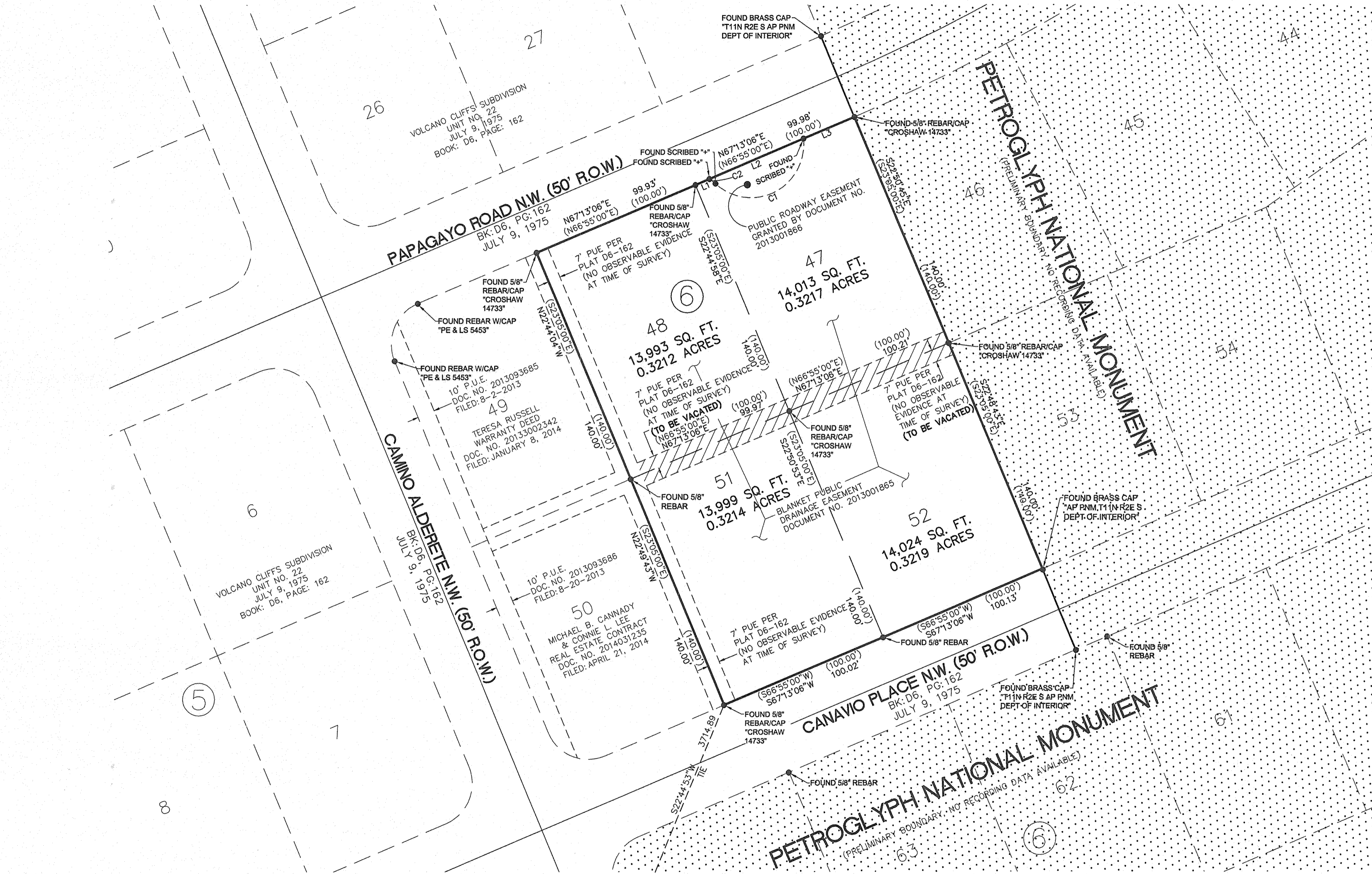
LINE TABLE		
LINE	BEARING	DISTANCE
L1	N67°13'06"E (N67°13'54"E)	8.80' (8.80')
L2	N67°13'06"E (N67°13'54"E)	59.28' (59.28')
L3	N67°13'06"E	31.90'

CURVE TABLE						
CURVE	LENGTH	RADIUS	DELTA	TANGENT	CHORD	CHORD DIRECTION
C1	73.86' (73.86')	30.63' (30.63')	138°09'39"	80.13'	57.22' (57.22')	S63°24'51"W (S63°25'39"W)
C2	4.38' (4.38')	24.37' (24.37')	10°18'28"	2.20'	4.38' (4.38')	N52°39'33"W (N52°38'45"W)

GRAPHIC SCALE



**VACATION EXHIBIT FOR
PLAT OF**
 LOTS 47, 48, 51 AND 52, BLOCK 6,
 VOLCANO CLIFFS, UNIT 22
 WITHIN SECTIONS 22 & 23, T.11N., R.2E., N.M.P.M.
 CITY OF ALBUQUERQUE
 BERNALILLO COUNTY, NEW MEXICO
 AUGUST 2016



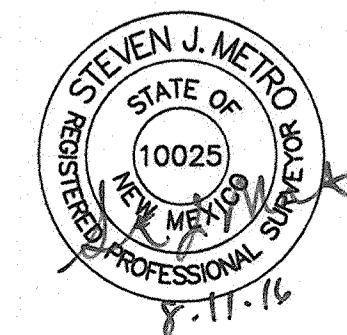
LEGEND

- FOUND PROPERTY CORNER AS NOTED
- PROPERTY LINES TO BE VACATED
- ▨ P.U.E. TO BE VACATED

"ACS 3-E10"
 3-1/4" BRASS DISC IN CONCRETE POST.
 NEW MEXICO STATE PLANE GRID
 COORDINATES (CENTRAL ZONE)
 X=1,499,059.808 Y=1,512,627.946
 ELEVATION=5318.888 (NAVD 1988)
 GROUND TO GRID FACTOR=0.999672416
 DELTA ALPHA=(-)00°16'20.35" (NAD 1983)

"ACS 13-D10"
 3-1/4" BRASS SET FLUSH IN LAVA ROCK
 NEW MEXICO STATE PLANE GRID
 COORDINATES (CENTRAL ZONE)
 X=1,501,318.610 Y=1,514,256.886
 GROUND TO GRID FACTOR=0.999672421
 DELTA ALPHA=(-)00°16'04.84" (NAD 1983)

LAYOUT NAME: SHT 1 OF 1 UNIT 22 (vacation)
 DRAWING NAME: S0840010402_ALTA.dwg
 NETWORK ADDRESS: M:\RR\08-400-104-00\CADD\MAPPING\ABQ\SAD 228 REPLATS
 Plot By: KMS



**WILSON
& COMPANY**
 4900 LANG AVENUE N.E.
 ALBUQUERQUE, NEW MEXICO
 87109
 (505) 348-4000
 SHEET 3 OF 3