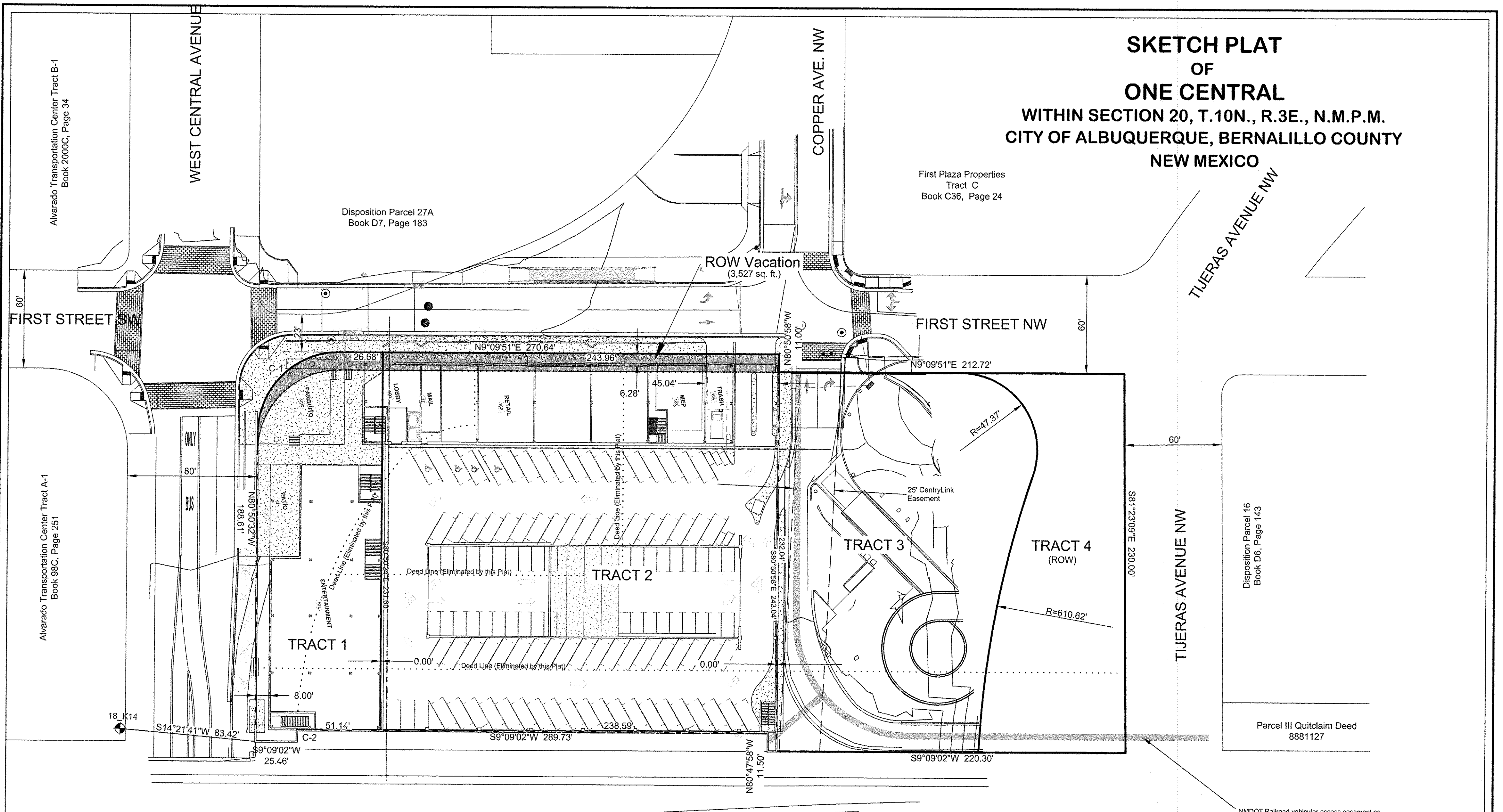


**SKETCH PLAT  
OF  
ONE CENTRAL  
WITHIN SECTION 20, T.10N., R.3E., N.M.P.M.  
CITY OF ALBUQUERQUE, BERNALILLO COUNTY  
NEW MEXICO**



NEW MEXICO DEPARTMENT OF TRANSPORTATION RAILROAD

**CURVE TABLE**

NO.	DELTA	RADIUS	ARC LENGTH	CHORD BEARING	CHORD
C-1	90°00'23"	50.00	78.55	N35°50'20"W	70.72
C-2	01°29'38"	268.50	7.00	S80°10'39"E	7.00

NMDOT Railroad vehicular access easement as indicated on Exhibit "I" of the Quitclaim Deed filed September 8, 1988, in Volume D342A, Pages 237-242, as Document No. 08881127.  
Location is schematic and width is undetermined.

**HUITT-ZOLIARS**  
Huitt-Zollars, Inc. Rio Rancho  
333 Rio Rancho Drive NE, Suite 101  
Rio Rancho, New Mexico 87124  
Phone (505) 892-5141 Fax (505) 892-3259

