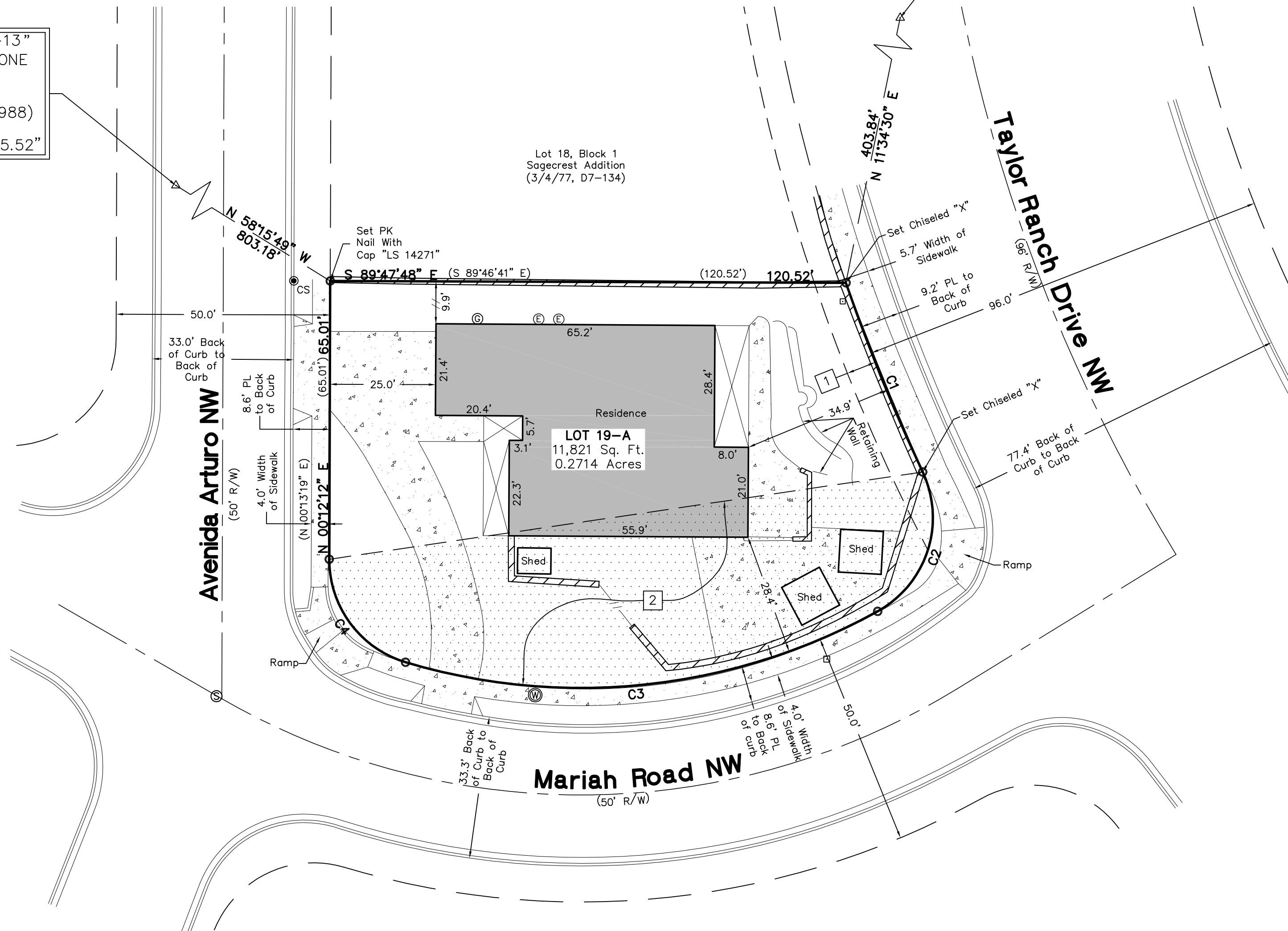


**Site Sketch for
Lot 19-A, Block 1
Sagecrest Addition**
Being Comprised of
**Lot 19, Block 1
Sagecrest Addition**
City of Albuquerque
Bernalillo County, New Mexico
September 2016

ACS Monument "SMW-13"
NAD 1983 CENTRAL ZONE
X=1506946.389
Y=1511177.325
Z=5109.921 (NAVD 1988)
G-G=0.999679901
Mapping Angle=-0°15'25.52"

ACS Monument "13-E11"
NAD 1983 CENTRAL ZONE
X=1507830.738
Y=1511150.048
Z=5109.053 (NAVD 1988)
G-G=0.999679673
Mapping Angle=-0°15'19.38"



Legend

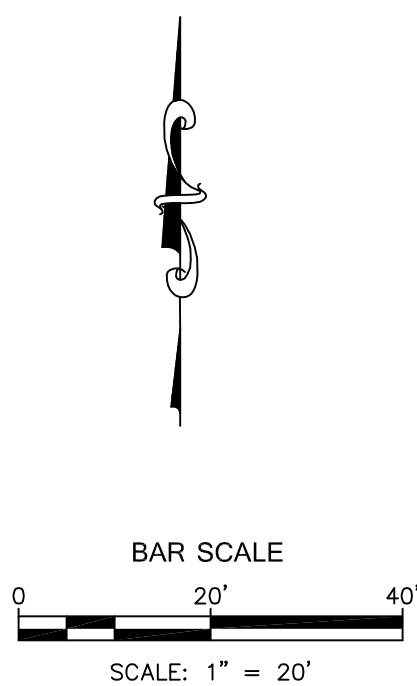
N 90°00'00" E	MEASURED BEARINGS AND DISTANCES
(N 90°00'00" E)	RECORD BEARINGS AND DISTANCES (3/4/77, D7-134)
CS	FOUND CURB SCRATCH
○	SET BATHEY MARKER "LS 14271" UNLESS OTHERWISE NOTED
[Pattern]	RESTRICTIONS FOR IMPROVEMENTS OVER 3' HIGH". ELIMINATED WITH THE FILING OF THIS PLAT
[Symbol]	COVERED AREA
[Symbol]	CONCRETE
[Symbol]	UTILITY PEDESTAL
[Symbol]	WOOD FENCE
[Symbol]	BLOCK WALL
ⓔ	ELECTRIC METER
ⓐ	GAS METER
Ⓦ	WATER METER
Ⓢ	SANITARY SEWER MANHOLE

Easement Notes

- 1 EXISTING 7' UTILITY EASEMENT (3/4/77, D7-134)

Restrictions

- 2 RESTRICTONS FOR IMPROVEMENTS OVER 3' HIGH (3/4/77, D7-134), ELIMINATED WITH THE FILING OF THIS PLAT. SHOWN HEREON AS [Pattern]



Curve Table					
Curve #	Length	Radius	Delta	Chord Length	Chord Direction
C1	47.72' (47.72')	434.31' (434.31')	6°17'43"	47.70'	S 22°06'01" E
C2	37.65' (37.65')	25.00' (25.00')	86°17'15"	34.19'	S 17°53'45" W
C3	113.98' (113.98')	143.15' (143.15')	45°37'14"	110.99'	S 83°50'59" W
C4	32.09' (32.09')	25.00' (25.00')	73°32'42"	29.93'	N 36°34'04" W

CARTESIAN SURVEYS INC.
P.O. BOX 44414 RIO RANCHO, N.M. 87174
Phone (505) 896 - 3050 Fax (505) 891 - 0244