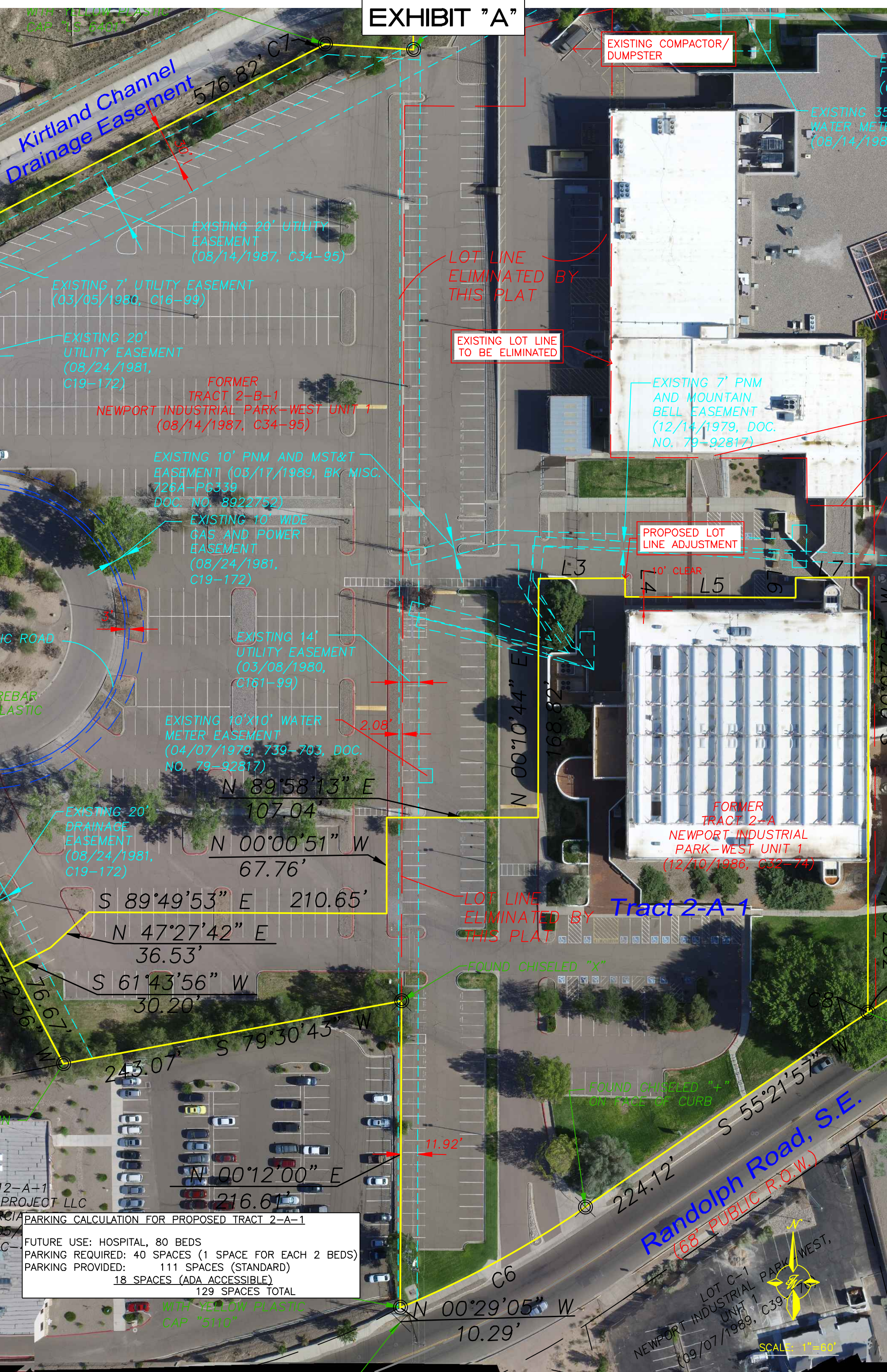


# EXHIBIT "A"



EXISTING COMPACTOR/DUMPSTER

EXISTING 35" WATER METER (08/14/1987)

Kirtland Channel  
Drainage Easement

576.82' C1

EXISTING 20' UTILITY EASEMENT (08/14/1987, C34-95)

EXISTING 7' UTILITY EASEMENT (03/05/1980, C16-99)

EXISTING 20' UTILITY EASEMENT (08/24/1981, C19-172)

FORMER TRACT 2-B-1  
NEWPORT INDUSTRIAL PARK-WEST UNIT 1 (08/14/1987, C34-95)

EXISTING 10' PNM AND MST&T EASEMENT (03/17/1989, BK MISC. 726A-PC339 DOC. NO. 8922752)

EXISTING 10' WIDE GAS AND POWER EASEMENT (08/24/1981, C19-172)

EXISTING 14' UTILITY EASEMENT (03/08/1980, C161-99)

EXISTING 10'X10' WATER METER EASEMENT (04/07/1979, 739-703, DOC. NO. 79-92817)

N 89°58'13" E  
107.04'

N 00°00'51" W  
67.76'

S 89°49'53" E 210.65'

N 47°27'42" E  
36.53'

S 61°43'56" W  
30.20'

243.07' S 79°30'43" W

N 00°12'00" E  
216.61'

LOT LINE ELIMINATED BY THIS PLAT

EXISTING LOT LINE TO BE ELIMINATED

PROPOSED LOT LINE ADJUSTMENT

10' CLEAR

FORMER TRACT 2-A  
NEWPORT INDUSTRIAL PARK-WEST UNIT 1 (12/10/1986, C32-74)

Tract 2-A-1

LOT LINE ELIMINATED BY THIS PLAT

FOUND CHISELED "X"

FOUND CHISELED "+" ON FACE OF CURB

11.92'

Randolph Road, S.E.  
(68' PUBLIC R.O.W.)

PARKING CALCULATION FOR PROPOSED TRACT 2-A-1

FUTURE USE:	HOSPITAL, 80 BEDS
PARKING REQUIRED:	40 SPACES (1 SPACE FOR EACH 2 BEDS)
PARKING PROVIDED:	111 SPACES (STANDARD)
	18 SPACES (ADA ACCESSIBLE)
	129 SPACES TOTAL

WITH YELLOW PLASTIC CAP "5110"

FOUND CHISELED "X"

N 00°29'05" W  
10.29'

LOT C-1  
NEWPORT INDUSTRIAL PARK-WEST  
(09/07/1989, C39-172)

SCALE: 1"=60'

LOT D-1  
HOBSON RICHARD W. & SUE  
HOBSON