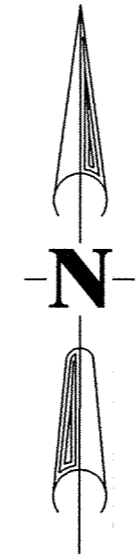
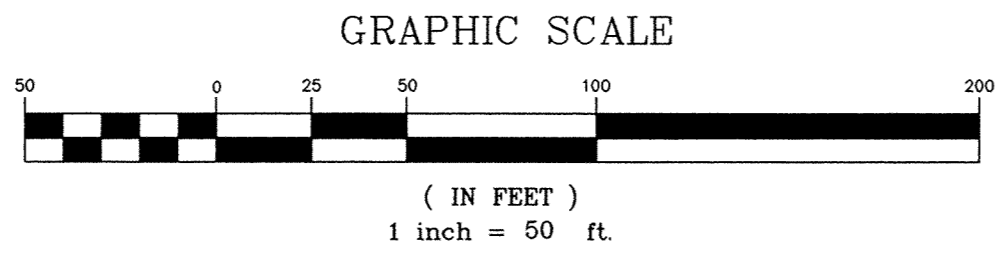
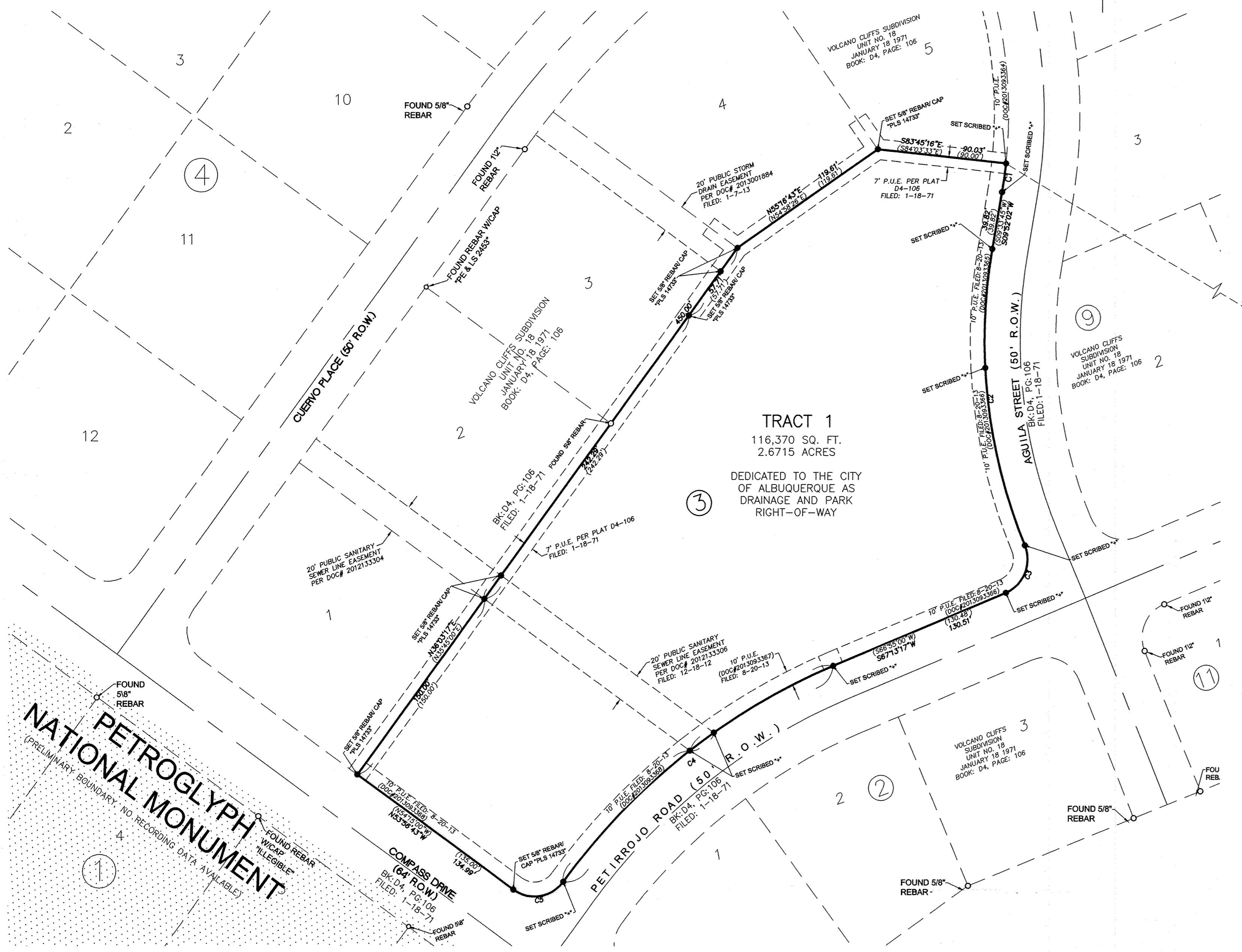


CURVE TABLE						
CURVE	LENGTH	RADIUS	DELTA	TANGENT	CHORD	CHORD DIRECTION
C1	19.97' (20.00')	316.47' (316.47')	03°36'58" (03°37'17")	9.99'	19.97'	S08°03'32"W
C2	208.80' (208.80')	366.47' (366.47')	32°38'44" (32°38'44")	107.32'	205.99'	S06°27'20"E
C3	39.27' (39.27')	25.00' (25.00')	89°59'59" (90°00'00")	25.00'	35.36'	S22°13'18"W
C4	243.30' (243.30')	447.26' (447.26')	31°10'03" (31°10'03")	124.74'	240.31'	S51°38'16"W
C5	39.27' (39.27')	25.00' (25.00')	90°00'03" (90°00'00")	25.00'	35.36'	S81°03'16"W



PLAT OF  
**TRACT 1,**  
**VOLCANO CLIFFS SUBDIVISION, UNIT 18**  
 A REPLAT OF A PORTION OF BLOCK 3  
 VOLCANO CLIFFS SUBDIVISION, UNIT 18  
 WITHIN SECTION 22,  
 TOWNSHIP 11 NORTH, RANGE 2 EAST  
 NEW MEXICO PRINCIPAL MERIDIAN  
 CITY OF ALBUQUERQUE  
 BERNALILLO COUNTY, NEW MEXICO  
 OCTOBER 2016



**"ACS 13-D10"**  
 3-1/4" BRASS SET FLUSH IN LAVA ROCK  
 NEW MEXICO STATE PLANE GRID  
 COORDINATES (CENTRAL ZONE)  
 X=1,501,318.610 Y=1,514,256.686  
 GROUND TO GRID FACTOR=0.999672421  
 DELTA ALPHA=(-)00°16'04.84" (NAD 1983)

**"ACS 3-E10"**  
 3-1/4" BRASS DISC IN CONCRETE POST.  
 NEW MEXICO STATE PLANE GRID  
 COORDINATES (CENTRAL ZONE)  
 X=1,499,059.808 Y=1,512,627.946  
 ELEVATION=5318.888 (NAVD 1988)  
 GROUND TO GRID FACTOR=0.999672416  
 DELTA ALPHA=(-)00°16'20.35" (NAD 1983)

- LEGEND
- FOUND PROPERTY CORNER AS NOTED
  - SET REBAR WITH PLASTIC CAP "CROSHAW PS14733"



**WILSON & COMPANY**  
 4900 LANG AVENUE N.E.  
 ALBUQUERQUE, NEW MEXICO  
 87109  
 (505) 348-4000  
 SHEET 2 OF 3