

Replat of
Lots 5-A, 11-A, 13-A and 15-A, Block 2
Commercial Addition
 Town of Albuquerque Grant, Projected Section 17,
 Township 10 North, Range 3 East, N.M.P.M.
 City of Albuquerque, Bernalillo County, New Mexico
 February 2018

RECORDING STAMP

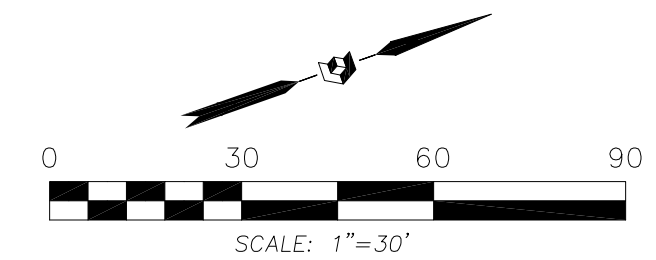
N.M.D.O.T. Rail Runner
 (100' ROW)

A.G.R.S. MONUMENT "18_K14"
 STANDARD A.G.R.S. BRASS TABLET
 (FOUND IN PLACE)
 NEW MEXICO STATE PLANE
 COORDINATES
 (CENTRAL ZONE-N.A.D. 1983)
 N=1,486,053.605 US SURVEY ft
 E=1,521,576.548 US SURVEY ft
 PUBLISHED EL=4963.415 US ft
 (NAVD 1988)
 GROUND TO GRID FACTOR=0.999682660
 DELTA ALPHA ANGLE=-0°13'41.97"

Point of Beginning

FOUND NO. 4 REBAR
 W/RED PLASTIC CAP
 "PLS 3517"

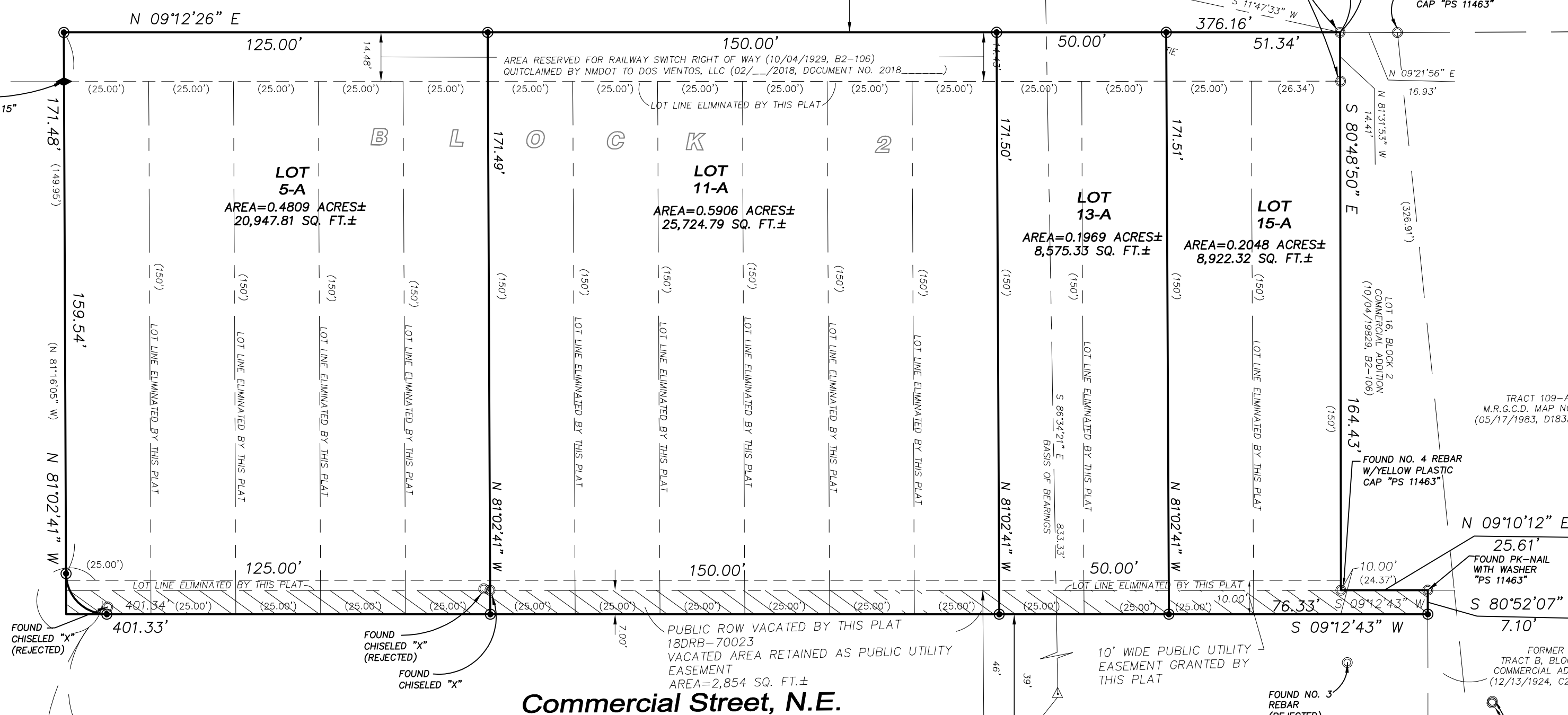
FOUND NO. 4 REBAR
 W/YELLOW PLASTIC
 CAP "PS 11463"



Legend

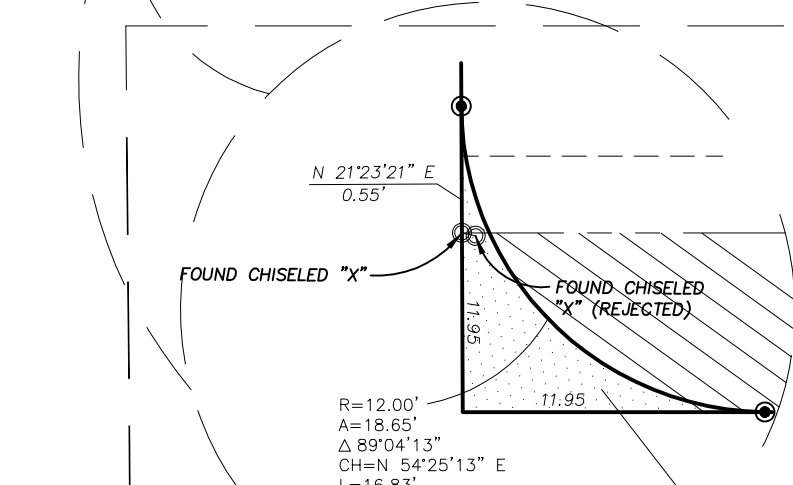
- N 90°00'00" E MEASURED BEARING AND DISTANCES
- (N 90°00'00" E) RECORD BEARINGS AND DISTANCES
- FOUND AND USED MONUMENT AS DESIGNATED
- DENOTES NO. 4 REBAR WITH YELLOW PLASTIC CAP "PS 11993" SET THIS SURVEY
- △ FOUND ALUMINUM AGRS MONUMENT AS DESIGNATED

Marquette Avenue N.E.
 (50' ROW)



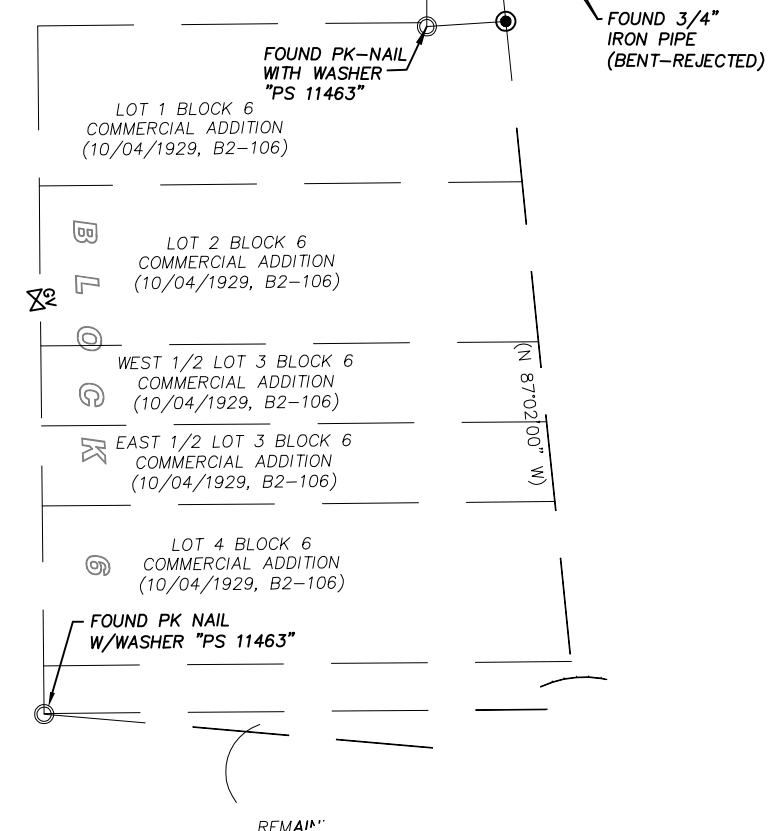
Commercial Street, N.E.
 (39' PUBLIC RIGHT OF WAY)

Roma Avenue, N.E.
 (40' ROW)



ADDITIONAL RIGHT OF WAY
 FOR STREET PURPOSES DEDICATED TO
 THE CITY OF ALBUQUERQUE IN FEE
 SIMPLE WITH WARRANTY COVENANTS BY
 THIS PLAT. AREA=30.58 SQ. FT.±

A.G.R.S. MONUMENT "6_K14R"
 STANDARD A.G.R.S. BRASS TABLET
 (FOUND IN PLACE)
 NEW MEXICO STATE PLANE COORDINATES
 (CENTRAL ZONE-N.A.D. 1983)
 N=1,486,003.797 US SURVEY ft
 E=1,522,408.158 US SURVEY ft
 PUBLISHED EL=4971.456 US ft
 (NAVD 1988)
 GROUND TO GRID FACTOR=0.999682048
 DELTA ALPHA ANGLE=-0°13'36.21"



PRECISION SURVEYS, INC.

OFFICE LOCATION:
 9200 San Mateo Boulevard, NE
 Albuquerque, NM 87113
 505.856.5700 PHONE
 505.856.7900 FAX

INDEXING INFORMATION FOR COUNTY CLERK
 OWNER DOS VIENTOS, LLC.
 SECTION 17, TOWNSHIP 10 N, RANGE 3 E,
 SUBDIVISION COMMERCIAL ADDITION
 UPC NO. 101405834304341006
 UPC NO. 101405834203841005
 UPC NO. 101405834102641004
 UPC NO. 101405833801341001