

GENERAL NOTES⁵

- THIS PROJECT WILL DECREASE THE EXISTING BATHER LOAD COUNT BY APPROXIMATELY 30 PATRONS, BY VIRTUE OF DEMOLISHING THE EXISTING WADING POOL.
- THIS PROJECT RE-UTILIZES THE EXISTING PARKING LOTS EAST AND NORTH INTACT, INCLUDING EXISTING INGRESS/EGRESS DRIVES.
- THIS PROJECT BRINGS THE PARKING STALL COUNTS INTO COMPLIANCE BY RE-STRIPING AND ADDING NEW PARKING- REFERENCE PARKING CALCULATIONS THIS SHEET.
- THIS PROJECT RE-UTILIZES THE EXISTING SITE LIGHTING, DOES NOT MODIFY THE LIGHTING QUANTITY OR FIXTURE TYPE.
- ANY FUTURE SIGNAGE OF CHANGES TO SIGNAGE MUST BE IN COMPLIANCE WITH THE SIGN REGULATIONS OF THE C-2 ZONE.

PARKING CALCULATIONS: LOS ALTOS POOL

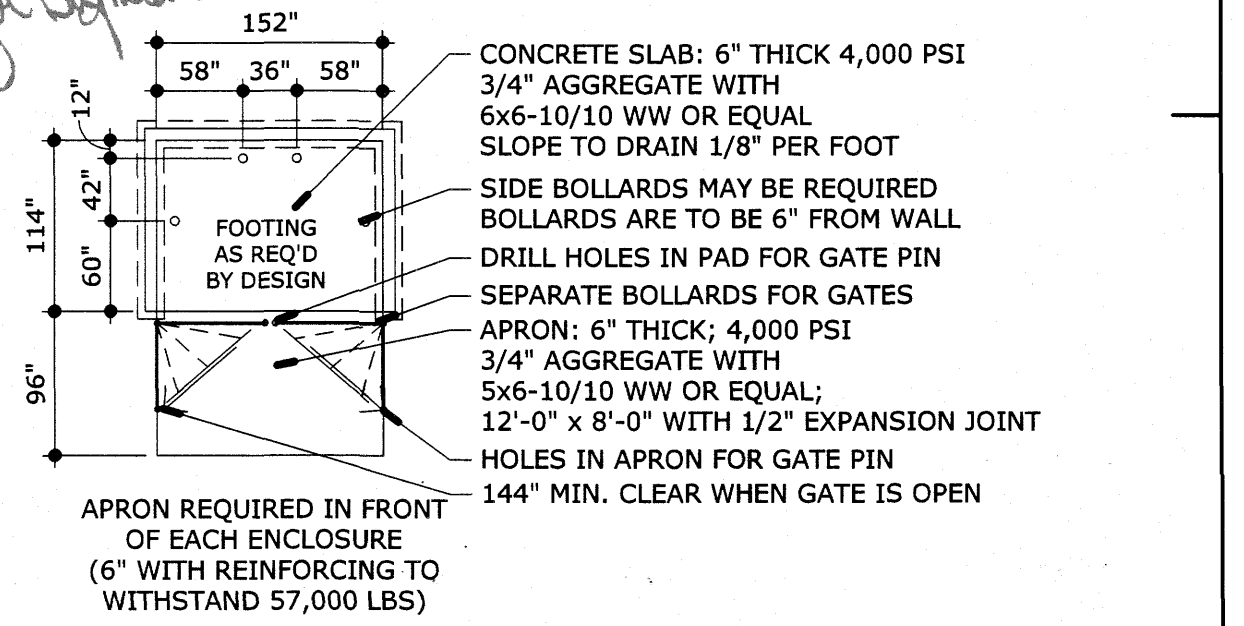
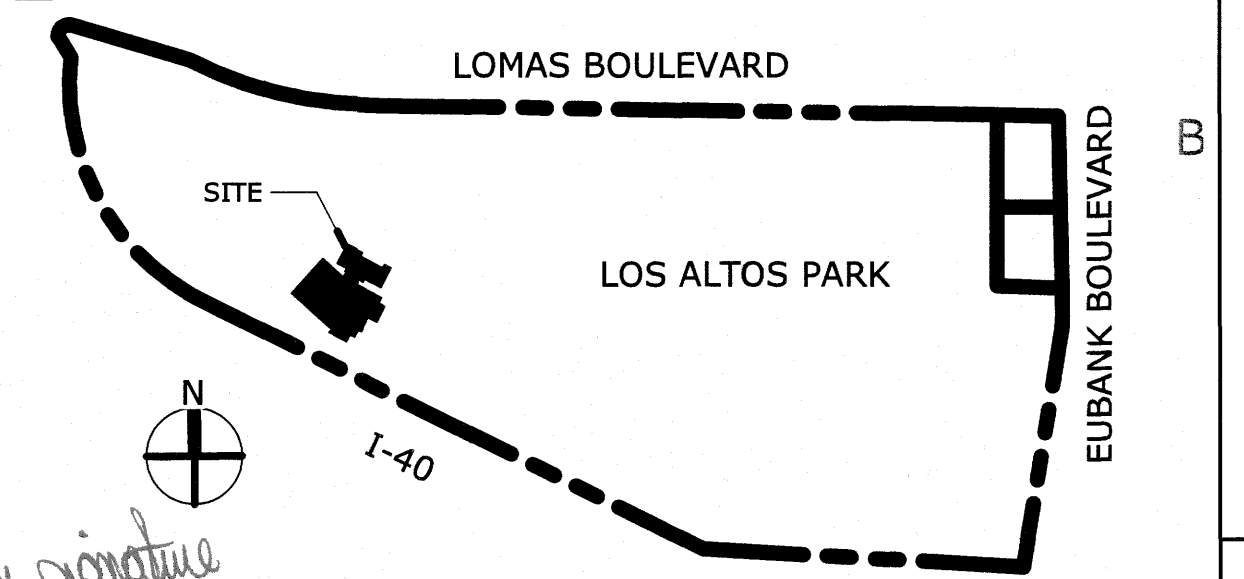
STANDARD PARKING SPACES: PURSUANT TO 14.16.2.22 SU-1 ZONE REQUIREMENTS, OFF-STREET PARKING SHALL BE PROVIDED AS REQUIRED BY THE PLANNING COMMISSION. NO OTHER SPECIFIC OFF-STREET PARKING REGULATIONS FOR SWIMMING POOL FACILITIES ARE INCLUDED IN THE ZONING CODE.

- STANDARD PARKING SPACES: CURRENT PROVIDED: 110; REQUIRED: 22,000/200 = 110
- CURRENT ACCESSIBLE PARKING SPACES: 8; REQUIRED: 8 (PER 14.16.3.1.F.9.A)
- CURRENT MOTORCYCLE PARKING: CURRENT PROVIDED 6; REQUIRED 4
- CURRENT BICYCLE PARKING: CURRENT PROVIDED 6; REQUIRED 6

EPC SITE KEYNOTE LEGEND

1	EXISTING ADA PARKING - UPDATE SIGNAGE TO ADA COMPLIANT, INCLUDING VAN ACCESSIBLE WITH REQUIRED LANGUAGE "VIOLATORS ARE SUBJECT TO FINE AND/OR TOWING." RE-STRIP ACCESSIBLE ROUTE AISLES.
2	CMU SCREENING WALL, 7'-4" HI, BURNISHED SEASHORE SAND COLORED, WITH PAINTED HM STEEL GATES.
4	18" SPHERICAL BOLLARD, PRE-CAST CONCRETE, NATURAL COLORED.
5	ORNAMENTAL STEEL PICKET FENCE TO MATCH EXISTING, 6" HI, BLACK
6	ORNAMENTAL STEEL PICKET GATE TO MATCH FENCE, 6" HI, BLACK
7	NEW BENCH- 3 SEAT CAPACITY
8	RE-STRIP EXISTING PARKING STALLS IN PLACE
9	ADA PASSENGER DROP-OFF ZONE 8' X 20'
10	PANIC DOOR- EMERGENCY EGRESS ONLY
12	NEW XERISCAPE LANDSCAPING
13	EXISTING NATIVE VEGETATION
14	EXISTING RETENTION POND- REF CIVIL
16	ADA ROUTE STRIPING 4" WIDE @ 18" OC
17	NEW CONCRETE WALK PER COA STD DWG 2720
18	NEW ADA RAMP WITH DETECTIBLE SURFACE PER COA STD DWG 2418
20	ASPHALT PATCH PER COA STD DWG 2405A
21	NEW ADA RAMP WITH HEADER CURB, DETECTIBLE SURFACE PER COA STD DWG 2441
22	TIE INTO EXISTING CURB AND GUTTER
23	NEW POWDER COATED STEEL BIKE RACK- 6 BIKE CAPACITY
25	EXISTING GRAVEL
27	EXISTING CHAIN LINK FENCE
28	EXISTING GRAVEL MAINTENANCE ROAD
29	EXISTING CONCRETE WALK PATH TO REMAIN
30	EXISTING LIGHT POLE
32	RELOCATE EXISTING ADA PARKING SIGNS TO CENTER OF PARKING STALL
33	RELOCATE EXISTING ORNAMENTAL FENCE
34	NEW CONCRETE CURB
35	ROLLING GATE
36	NEW CIP CONCRETE PAVING PER COA STD
37	NEW 6" COMPACTED BASE COURSE
38	PROPOSED TRANSFORMER LOCATION SHOWING CLEARANCES REQUIRED BY PNM

KEY PLAN



ADDITIONAL INFORMATION CONCERNING THESE SPECIFICATIONS MAY BE OBTAINED BY CALLING THE SOLID WASTE MANAGEMENT DEPARTMENT AT 761-8100

(A5) REFUSE ENCLOSURE
3/32" = 1'-0"

GREER STAFFORD/SJCF ARCHITECTURE, INC.
1717 LOUISIANA NE, SUITE 205
ALBUQUERQUE, NM 87110-7027
(505) 821-0235 • FAX: (505) 821-0348
3005 NORTHBRIDGE DR, SUITE F
FARMINGTON, NM 87401-2085
(505) 325-7475 • FAX: (505) 325-6464



THIS DRAWING IS INCOMPLETE AND NOT TO BE USED FOR CONSTRUCTION UNLESS IT IS STAMPED, SIGNED, AND DATED BELOW

THE NEW LOS ALTOS POOL
CITY OF ALBUQUERQUE
10100 LOMAS BOULEVARD NE
ALBUQUERQUE, NM 87123

Mark	Date	Description

PROJECT 5280.00
NO. DRAWN BY: Author
CHECKED BY: Checker
GREER STAFFORD/SJCF ARCHITECTURE
SHEET TITLE
SITE PLAN

DRAWING SHEET

101.1

2/21/2017 5:30:53 AM
 N:\S2017\00 COA Los Altos Pool\DRAWINGS\Sheet\Central Model\101\REFUSE ENCLOSURE COA_LAP_A57.rvt
 1" = 20'-0"