

1

2

3

4

5

D

C

B

A

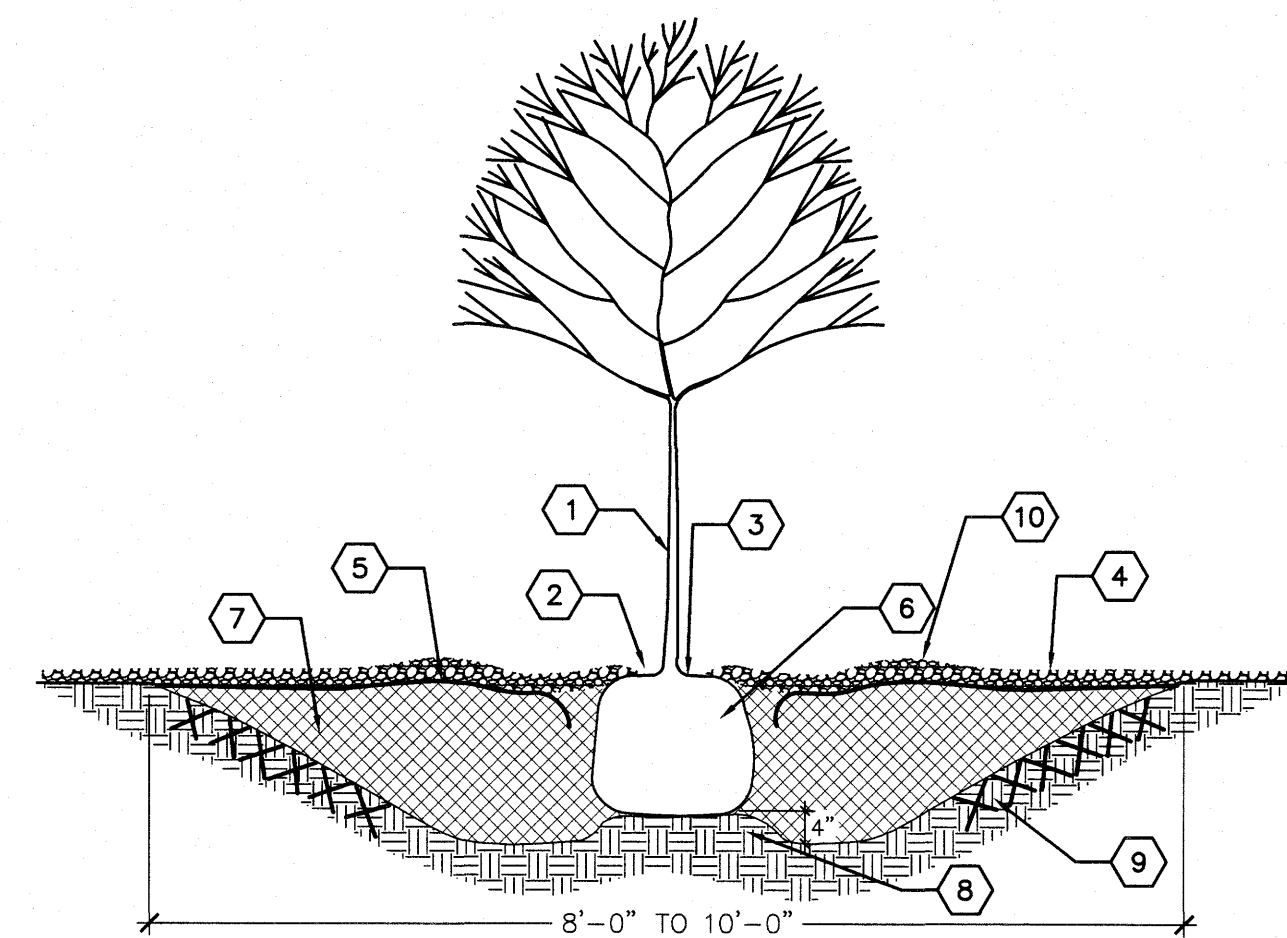
1

2

3

4

5



KEYED NOTES

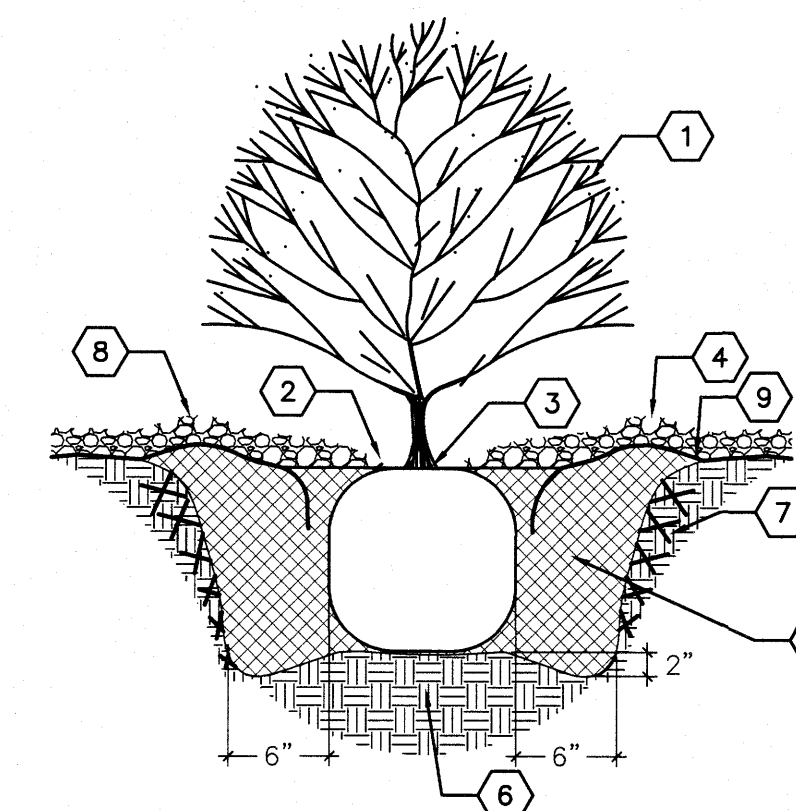
1. TREE LOCATION AND SPECIES AS PER PLAN
2. MULCH SHALL BE HELD BACK 4" FROM TREE TRUNK.
3. REMOVE EXISTING SOIL (FROM NURSERY) AS NEEDED TO EXPOSE ROOT FLARE. INSTALL WITH ROOT FLARE FLUSH WITH SUBGRADE (BOTTOM OF MULCH)
4. MULCH - SEE PLANTING PLAN
5. WEED BARRIER FABRIC - SEE PLANTING PLAN - TURN DOWN 6" AT EDGES
6. INSTALL TREE PLUMB. REMOVE WIRE BASKET, WOOD BOX, PLASTIC, TWINE, AND/OR ROPE PRIOR TO BACKFILL. REMOVE BURLAP EXCEPT FROM BOTTOM OF ROOT BALL
7. BACKFILL PER SPECIFICATIONS. LIGHTLY TAMP IN LIFTS AND WATER-IN TO ELIMINATE VOIDS AND AIR POCKETS
8. UNDISTURBED NATIVE SOIL
9. SCARIFY AND LOOSEN EDGES OF PLANTING PIT
10. 2" HIGH X 16" WIDE BERM, 4' MINIMUM DIAMETER OR AS SHOWN ON THE PLANS

GENERAL NOTES

- A. THE WIDTH OF THE TREE WELL MAY BE REDUCED AS NOTED ON THE PLANS OR ADJUSTED BY THE LANDSCAPE ARCHITECT TO MEET FIELD CONDITIONS

A3 TREE PLANTING

SCALE: N.T.S.



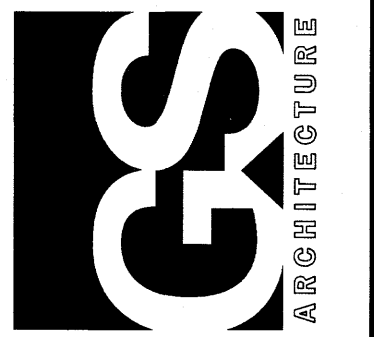
KEYED NOTES

1. SHRUB LOCATION AND SPECIES AS PER PLAN
2. MULCH SHALL BE FEATHERED TO A 2" DEPTH ON TOP OF ROOT BALL AND SHALL BE HELD BACK 2" FROM SHRUB STEM(S)
3. PLANT WITH TOP OF ROOT BALL FLUSH WITH SUBGRADE (BOTTOM OF MULCH)
4. 4" DEPTH MULCH THROUGHOUT SHRUB BED UNLESS OTHERWISE NOTED
5. BACKFILL PER SPECIFICATIONS. LIGHTLY TAMP IN LIFTS AND WATER-IN TO ELIMINATE VOIDS AND AIR POCKETS
6. UNDISTURBED NATIVE SOIL
7. SCARIFY AND LOOSEN EDGES OF PLANTING PIT
8. 2" HIGH X 6" WIDE BERM
9. WEED BARRIER FABRIC - SEE IRRIGATION PLANTING PLAN - TURN DOWN 6" AT EDGES

A4 SHRUB PLANTING

SCALE: N.T.S.

GREER STAFFORD/SICF ARCHITECTURE, INC.
 1717 LOUISIANA NE, SUITE 205
 ALBUQUERQUE, NM 87110-7037
 (505) 881-0335 • FAX: (505) 881-0348
 3005 NORTH RIDGE DR., SUITE F
 FARMINGTON, NM 87401-8085
 (505) 885-7475 • FAX: (505) 885-6464



THIS DRAWING IS INCOMPLETE AND NOT TO BE USED FOR CONSTRUCTION UNLESS IT IS STAMPED, SIGNED, AND DATED BELOW

THE NEW LOS ALTOS POOL
 CITY OF ALBUQUERQUE
 10100 LOMAS BOULEVARD NE
 ALBUQUERQUE, NM 87123

PROJECT NO: 5280.00
DRAWN BY: RMC/AZ
CHECKED BY: AZ/BV
GREER STAFFORD/SICF ARCHITECTURE

LANDSCAPE DETAILS

DRAWING SHEET

102.01

February 21, 2017

C:\Users\lvandor\Documents\GIS\LA_P_817_102010.dwg