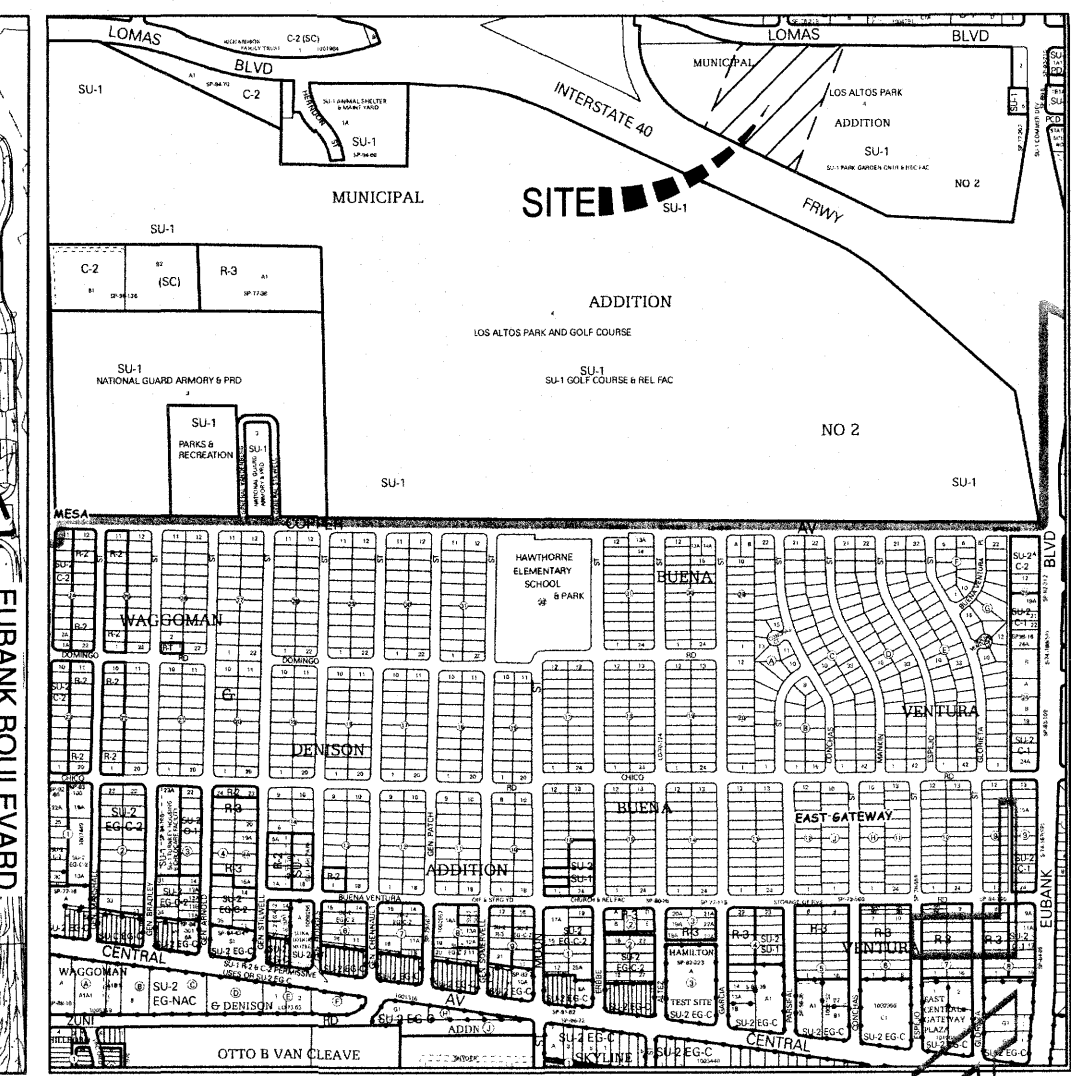


OFFSITE BASIN MAP



ZONE ATLAS PAGE: K-20

Los Altos Pool
Existing Conditions Basin Data Table
This table is based on the DPM Section 22.2, Zone: 3

Basin ID	Area (SQ. FT)	Area (AC.)	Land Treatment Percentages				Q(100yr) (cfs/ac.)	Q(100yr) (CFS)	V(100yr) (inches)	V(100yr-6hr) (CF)	V(100yr-24hr) (CF)	FIRST FLUSH (CF)
			A	B	C	D						
EXISTING												
B-A	9319	0.21	0.0%	0.0%	21.3%	78.7%	4.69	1.00	2.13	1656	1961	208
B-B	10124	0.23	0.0%	0.0%	42.3%	57.7%	4.36	1.01	1.91	1609	1852	165
B-C	17125	0.39	0.0%	0.0%	35.2%	64.8%	4.47	1.76	1.98	2830	3293	314
B-D	28369	0.65	0.0%	0.0%	26.5%	73.5%	4.60	3.00	2.08	4908	5777	591
TOTAL	64937	1.49	-	-	-	-	-	6.77	-	11003	12883	1278
OFFSITE												
B1	694510	15.94	0.0%	75.0%	0.0%	25.0%	3.21	51.10	1.28	74081	81316	4919
TOTAL	694510	15.94	-	-	-	-	-	51.10	-	74081	81316	4919

DRAINAGE NARRATIVE

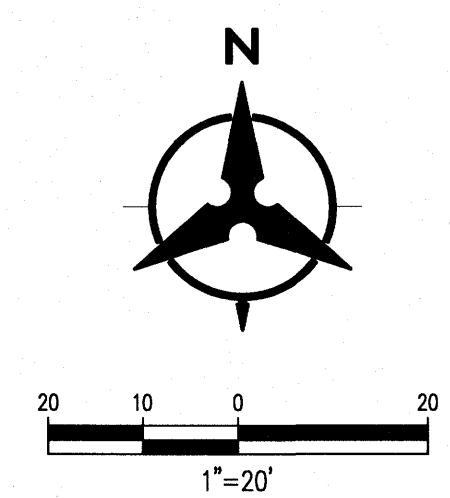
EXISTING CONDITIONS:
THE NEW LOS ALTOS POOL IS LOCATED WITHIN THE EXISTING LOS ALTOS PARK ALONG LOMAS BOULEVARD. THE AREA THAT THE SITE CURRENTLY SITS ON IS APPROXIMATELY 1.50 ACRES. IT IS CURRENTLY FULLY DEVELOPED AND GENERALLY SLOPES FROM NORTH TO SOUTH. THE EXISTING POOL BUILDING AND PARKING LOT COVERS A MAJORITY OF THE SITE. A PORTION OF THE EXISTING SITE FLOWS TO THE WEST BEFORE CONTINUING SOUTH ON ITS HISTORIC PATH. THE OTHER PORTION OF THE SITE FLOWS TO THE EAST INTO THE PARKING LOT BEFORE CONTINUING SOUTH WHERE IT PROCEEDS TO A CONCRETE RUNDOWN WHERE IT IS THEN CAPTURED BY OFFSITE INFRASTRUCTURE THAT CONNECTS TO THE ADJACENT I-40 DRAINAGE CHANNEL.

THE SITE IS NOT LOCATED WITHIN A DESIGNATED FEMA FLOOD ZONE (FEMA FIRM # 35001C0358H).

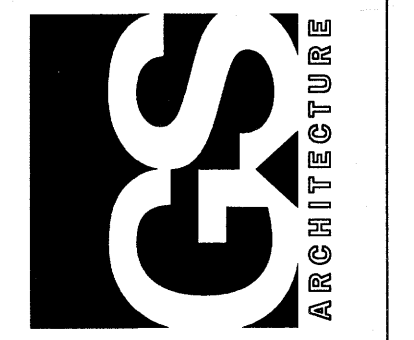
OFFSITE CONDITIONS:
A PORTION OF THE EXISTING LOS ALTOS PARK INCLUDING THE NEW LOS ALTOS POOL DRAINS TO A CONCRETE RUNDOWN SOUTHEAST OF THE BUILDING. THIS BASIN EXTENDS TO EUBANK BOULEVARD ON THE EAST SIDE. THIS FLOW THEN DISCHARGES INTO THE I-40 CHANNEL. APPROXIMATELY 51.50 CFS CONTRIBUTES TO THIS RUNDOWN. THIS FLOW WAS DETERMINED USING EXISTING SURVEY FOR THE SITE AND VISUAL EVIDENCE. SEE THE ABOVE OFFSITE DRAINAGE BASIN FOR APPROXIMATE BASIN AREA. THE COA DPM WAS USED TO DETERMINE THE LAND TREATMENT AREAS OF A TYPICAL PARK.

GRADING LEGEND

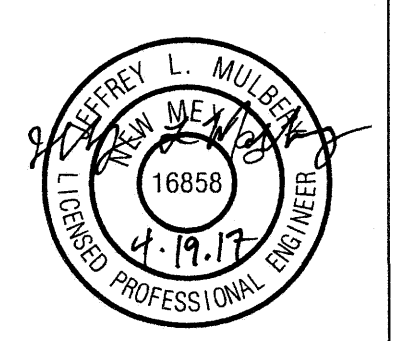
- PROPERTY LINE
- PROJECT LIMITS OF GRADING
- - - 5025 - EXISTING INDEX CONTOUR
- - - 5024 - EXISTING INTERMEDIATE CONTOUR
- ⊕ 5025.25 - EXISTING GROUND SPOT ELEVATION
- 5025 - PROPOSED INDEX CONTOUR
- 5024 - PROPOSED INTERMEDIATE CONTOUR
- PROPOSED FLOW LINE
- ⊕ 26.75 - PROPOSED FINISHED GRADE SPOT ELEVATION
- TC=TOP OF CURB, FL=FLOW LINE, TS=TOP OF SIDEWALK, TG=TOP OF GRADE, FGH=FINISH GROUND HIGH, FGL=FINISH GROUND LOW
- PROPOSED CURB & GUTTER
- DIRECTION OF FLOW
- WATER BLOCK/GRADE BREAK
- PROPOSED STORM DRAIN LINE
- ⊙ - PROPOSED STORM DRAIN MANHOLE
- - PROPOSED STORM DRAIN INLETS
- PROPOSED RETAINING WALL
- EASEMENT
- PROPOSED WATER HARVESTING AREAS (FIRST FLUSH REQUIREMENT)



GREEN STAFFORD/SMCF ARCHITECTURE, INC.
1717 LOUISIANA NE, SUITE 205
ALBUQUERQUE, NM 87110-7027
(505) 881-0335 - FAX: (505) 881-0348
3005 NORTHBRIDGE DR, SUITE F
FARMINGTON, NM 87401-8085
(505) 325-7475 - FAX: (505) 325-6464



THIS DRAWING IS INCOMPLETE AND NOT TO BE USED FOR CONSTRUCTION UNLESS IT IS STAMPED, SIGNED, AND DATED BELOW



THE NEW LOS ALTOS POOL
CITY OF ALBUQUERQUE
10100 LOMAS BOULEVARD NE
ALBUQUERQUE, NM 87123

PROJECT NO: 5280.00
DRAWN BY: MHS
CHECKED BY: JLM
GREEN STAFFORD ARCHITECTURE
SHEET TITLE EXISTING DRAINAGE MANAGEMENT PLAN
DRAWING SHEET

ISSUE: February 24, 2017

001