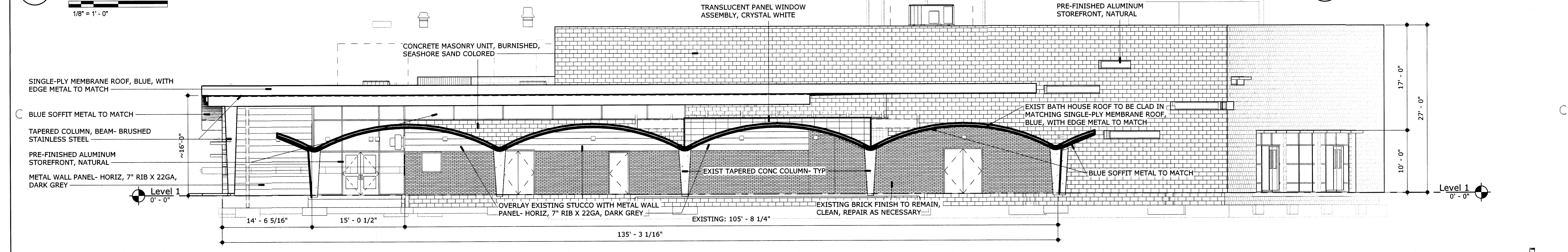
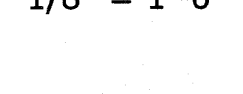


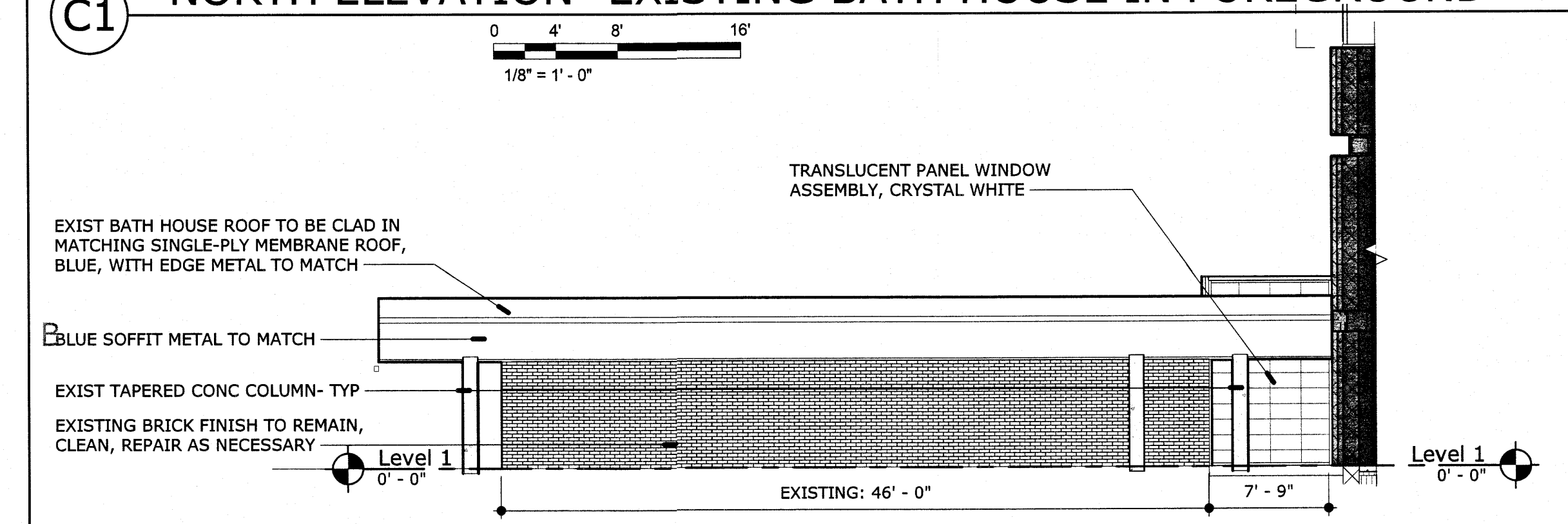
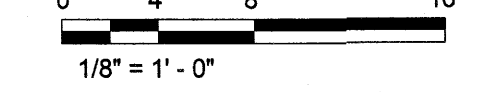
D1 EAST ELEVATION



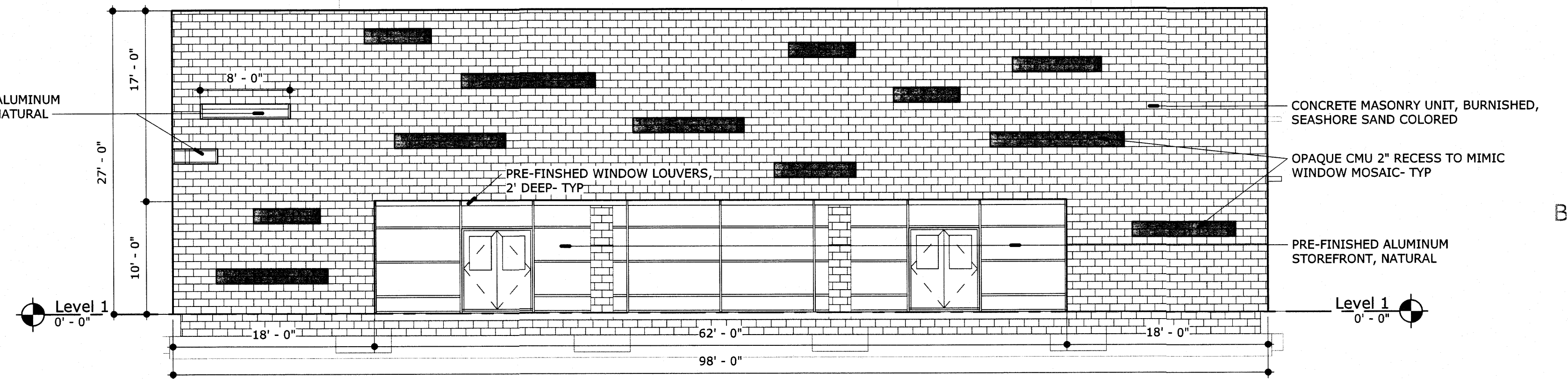
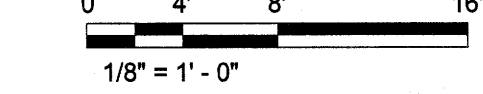
D5 REFUSE ENCLOSURE



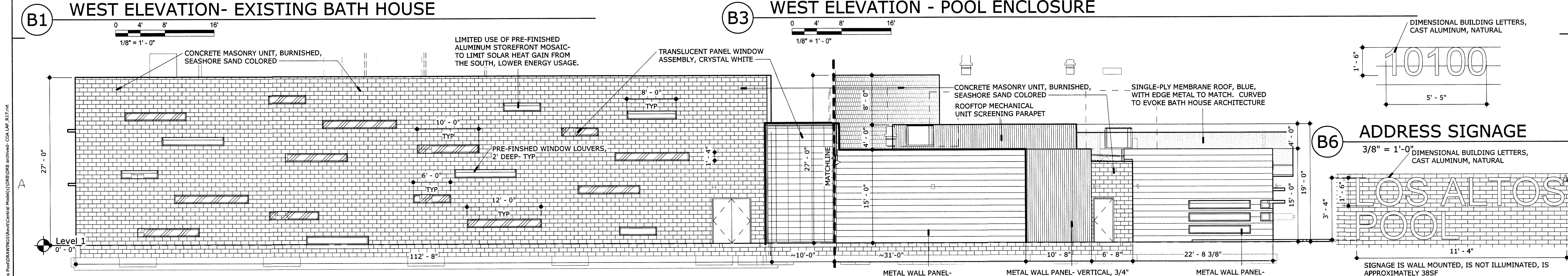
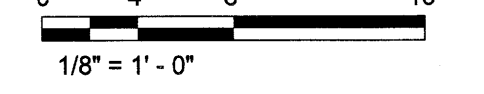
C1 NORTH ELEVATION- EXISTING BATH HOUSE IN FOREGROUND



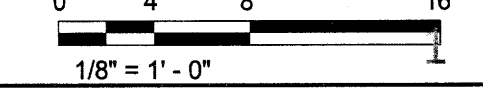
B1 WEST ELEVATION- EXISTING BATH HOUSE



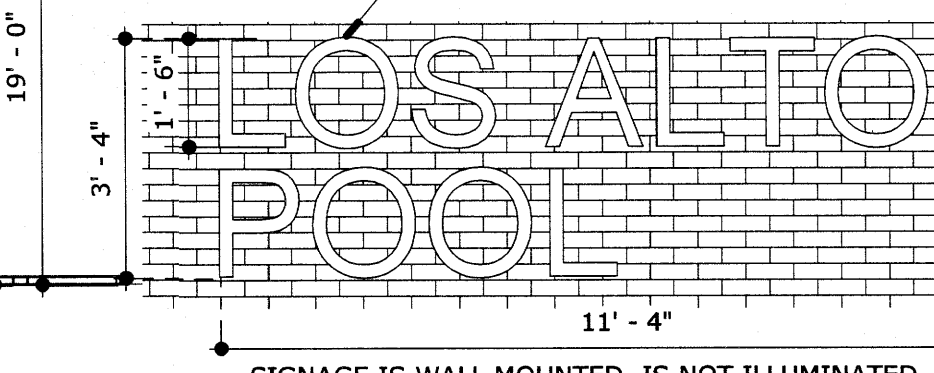
B3 WEST ELEVATION - POOL ENCLOSURE



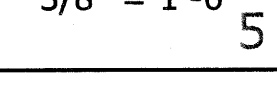
A1 SOUTH ELEVATION



B6 ADDRESS SIGNAGE



A6 BUILDING SIGNAGE



GREER STAFFORD/SJCF ARCHITECTURE, INC.
 1717 LOUISIANA NE, SUITE 205
 ALBUQUERQUE, NM 87110-7027
 (505) 821-0235 • FAX: (505) 821-0348
 3005 NORTHBRIDGE DR, SUITE F
 FARMINGTON, NM 87401-2085
 (505) 325-7475 • FAX: (505) 325-6464

THIS DRAWING IS INCOMPLETE AND NOT TO BE USED FOR CONSTRUCTION UNLESS IT IS STAMPED, SIGNED, AND DATED BELOW

THE NEW LOS ALTOS POOL
 CITY OF ALBUQUERQUE
 10100 LOMAS BOULEVARD NE
 ALBUQUERQUE, NM 87123

Mark	Date	Description
ISSUE:	FEBRUARY 21, 2017	
PROJECT NO:	5280.00	
DRAWN BY:	Author	
CHECKED BY:	Checker	
GREER STAFFORD/SJCF ARCHITECTURE		
SHEET TITLE: EXTERIOR ELEVATIONS		