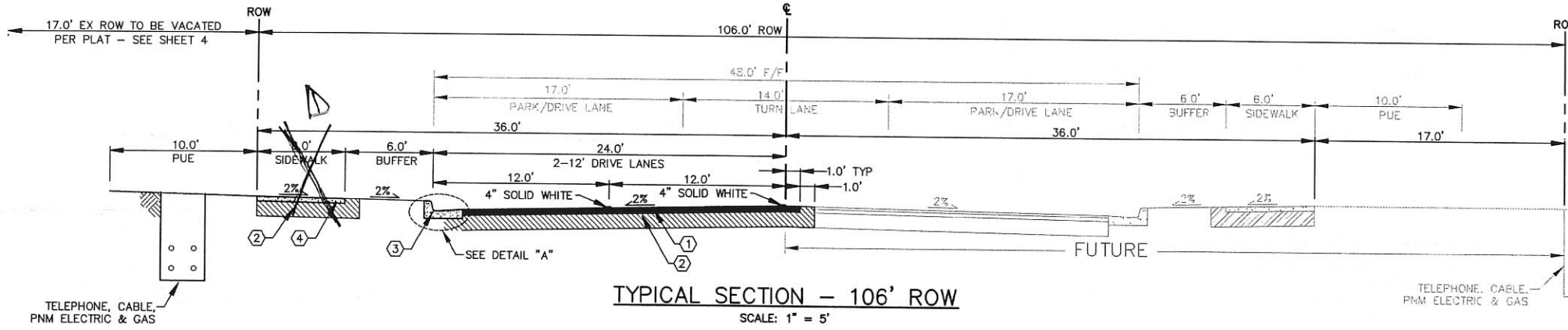
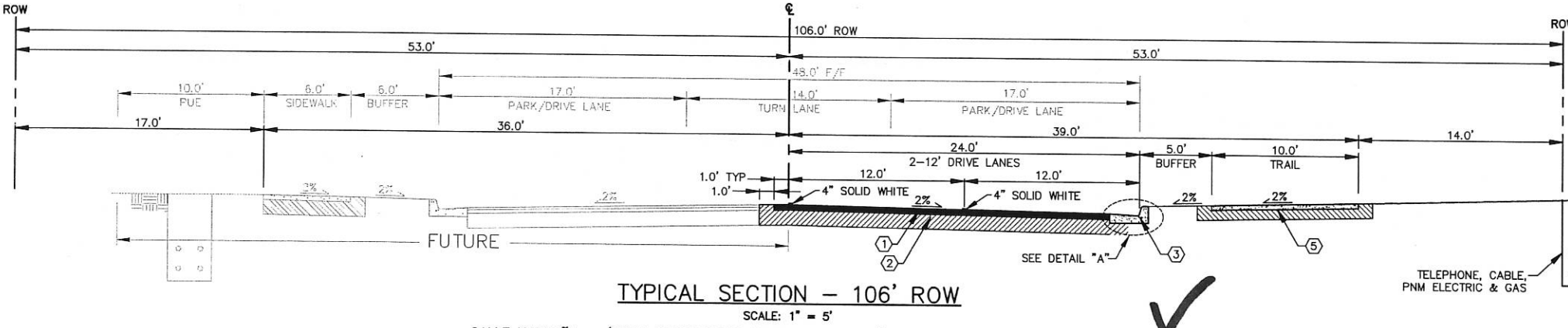


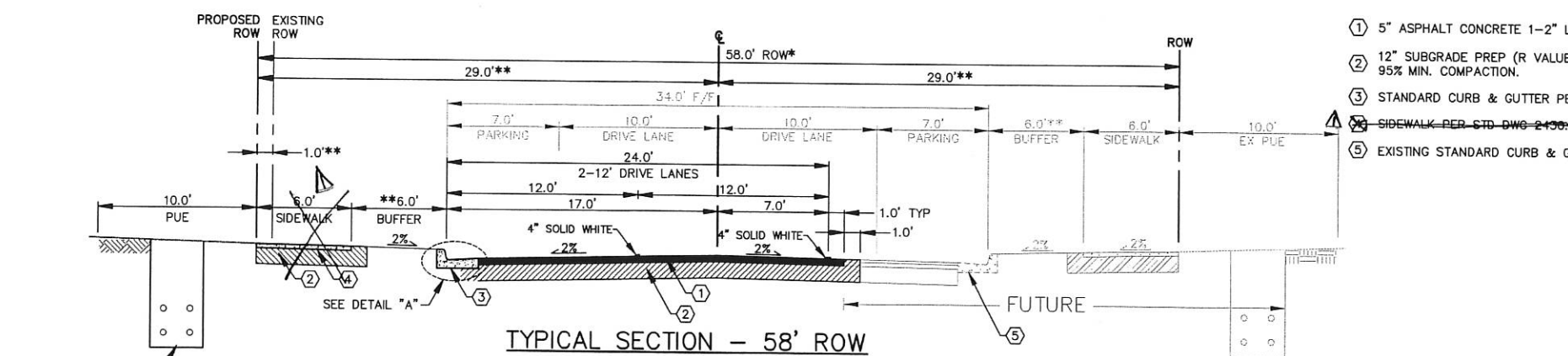
TYPICAL SECTION - 72' ROW
SCALE: 1" = 5'
KIMMICK DRIVE - (VALIENTE ROAD TO PDN) STA 105+32.95 TO STA 108+99.65
CALLE NORTEÑA - (VALIENTE ROAD TO PDN) STA 15+42.76 TO STA 19+15.51



TYPICAL SECTION - 106' ROW
SCALE: 1" = 5'
KIMMICK DR - (ROSA PARKS TO VALIENTE ROAD) STA 99+75.64 TO STA 105+32.92



TYPICAL SECTION - 106' ROW
SCALE: 1" = 5'
CALLE NORTEÑA - (ROSA PARKS ROAD TO VALIENTE ROAD) STA 9+83.51 TO STA 19+15.51

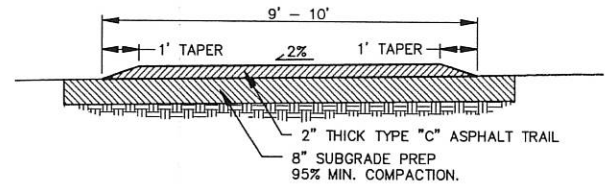


TYPICAL SECTION - 58' ROW
SCALE: 1" = 5'
ROSA PARKS ROAD STA 31+36 TO STA 36+61.64
*VARIES 58.0' TO 62.0' STA 36+61.64 TO STA 39+99.10
**VARIES

- NOTE: CUT AND FILL SLOPES ARE 3:1 AFTER BENCH.
- ① 5" ASPHALT CONCRETE 1-2" LIFT, 1-3" LIFT
 - ② 12" SUBGRADE PREP (R VALUE ≥ 50) 95% MIN. COMPACTION.
 - ③ STANDARD CURB & GUTTER PER STD DWG 2415A.
 - ④ 10' WIDE ASPHALT TRAIL CALLE - NORTEÑA ONLY PER TYPICAL SECTION DETAIL THIS SHEET.
 - ⑤ 6" SIDEWALK PER STD DWG 2430 - KIMMICK ONLY.
 - ⑥ SIDEWALK PER STD DWG 2430.

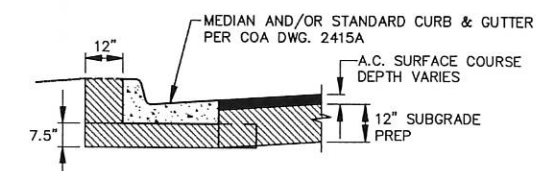
GENERAL PAVING NOTES:
1. SUBGRADE SOIL WITH R < 50 SHOULD BE REMOVED TO DEPTH OF 24" AND REPLACED WITH SOIL EXHIBITING R ≥ 50.
2. *1' SUBGRADE SOIL. R-VALUE ≥ 50 PLACED IN 2-6" COMPACTED LIFTS. 95% MIN. COMPACTION, AT OPT. MOISTURE +/- 2.0%, ASTM D1557, OR OPT. MOISTURE, TO +4%, ASTM D698 FOR SOIL W/35% OR MORE MATERIAL PASSING THE NO. 200 SIEVE.

- NOTE: CUT AND FILL SLOPES ARE 3:1 AFTER BENCH.
- ① 5" ASPHALT CONCRETE 1-2" LIFT, 1-3" LIFT
 - ② 12" SUBGRADE PREP (R VALUE ≥ 50) 95% MIN. COMPACTION.
 - ③ STANDARD CURB & GUTTER PER STD DWG 2415A.
 - ④ SIDEWALK PER STD DWG 2430.



TYPICAL TRAIL SECTION DETAIL
NTS

- NOTE: CUT AND FILL SLOPES ARE 3:1 AFTER BENCH.
- ① 5" ASPHALT CONCRETE 1-2" LIFT, 1-3" LIFT
 - ② 12" SUBGRADE PREP (R VALUE ≥ 50) 95% MIN. COMPACTION.
 - ③ STANDARD CURB & GUTTER PER STD DWG 2415A.
 - ④ SIDEWALK PER STD DWG 2430.
 - ⑤ 2" ASPHALT TRAIL PER TYPICAL TRAIL SECTION DETAIL THIS SHEET.



DETAIL "A" - TYPICAL MODULE
NTS
(TYPICAL ALL CURB & GUTTER)

- NOTE: CUT AND FILL SLOPES ARE 3:1 AFTER BENCH.
- ① 5" ASPHALT CONCRETE 1-2" LIFT, 1-3" LIFT
 - ② 12" SUBGRADE PREP (R VALUE ≥ 50) 95% MIN. COMPACTION.
 - ③ STANDARD CURB & GUTTER PER STD DWG 2415A.
 - ④ SIDEWALK PER STD DWG 2430.
 - ⑤ EXISTING STANDARD CURB & GUTTER (CPN 709784).

WILSON & COMPANY
4900 LANG AVE NE
ALBUQUERQUE, NEW MEXICO 87109
PH (505) 348-4000
FAX (505) 348-4072
www.wilsonco.com

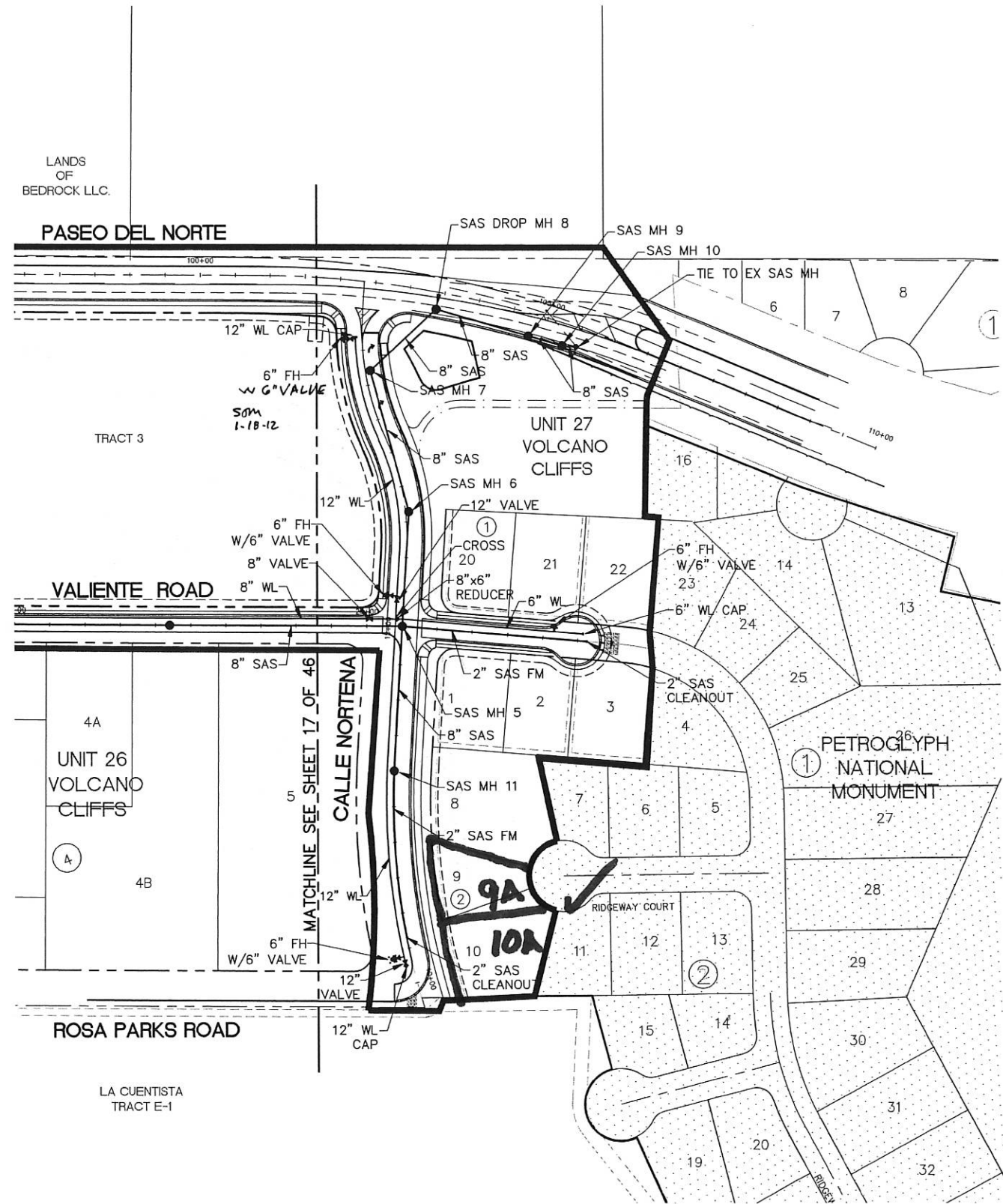
CITY OF ALBUQUERQUE
DEPARTMENT OF MUNICIPAL DEVELOPMENT
ENGINEERING DIVISION
SPECIAL ASSESSMENT DISTRICT 228-VOL. 3
TYPICAL SECTIONS - UNITS 26 & 27

Design Review Committee	City Engineer Approval	Mo./Day/Yr.	Mo./Day/Yr.
City Project No.	Zone Map No.	Sheet	Of
693391	D-10, D-11	7	46

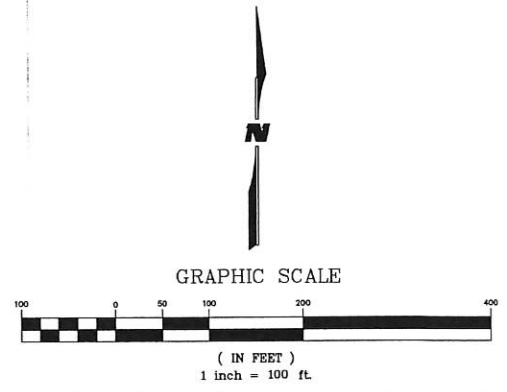
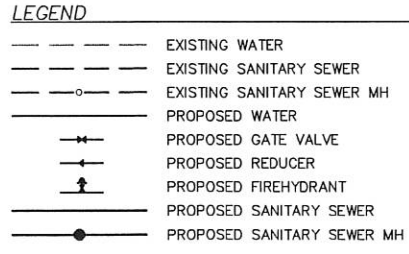
AS-BUILT INFORMATION		BENCH MARKS		SURVEY INFORMATION		ENGINEER'S SEAL	
CONTRACTOR	AUT	ACS BRASS CAP, STAMPED "3-E10"	DATE	NO.	NO.		
WORK STARTED BY	AUT	SET IN TOP OF CONCRETE POST PROJECTING 0.30 FT. ABOVE GROUND, LOCATED APPROX. 225' E OF THE INTERSECTION OF RIM ROCK DR. NW AND MARGOLD DR. NW (NAD 1983). X 1499059.808, Y 1512627.946	DATE	BY	BY		
FIELD SUPERVISOR BY	AWT	RIM ROCK DR. NW AND MARGOLD DR. NW (NAD 1983). X 1499059.808, Y 1512627.946	DATE	NO.	NO.	REVISIONS	REMARKS
DRAWN BY	WCT	ELEVATION = 5318.89 FT. (NAVD 1988)	DATE	NO.	NO.	NO. DATE	NO. DATE
CHECKED BY	WCT		DATE	NO.	NO.	WILSON & COMPANY, ENGINEERS & ARCHITECTS	DATE DEC 2011
RECORDED BY			DATE	NO.	NO.	DESIGNED BY	DATE DEC 2011
			DATE	NO.	NO.	DRAWN BY	DATE DEC 2011
			DATE	NO.	NO.	CHECKED BY	DATE DEC 2011

RECORD DRAWING
DATE 07/14

WCEA # 0840010400
DEC 2011



- NOTES:**
- AIR/VACUUM RELEASE VALVE WILL BE CONSTRUCTED PER DETAIL ON SHEET 83A
- KEYED NOTES:**
- ① 25' SEWER, WATER & STORM DRAIN EASEMENT
 - ② 20' STORM DRAIN EASEMENT



WILSON & COMPANY
 4900 LANG AVE NE
 ALBUQUERQUE, NEW MEXICO 87109
 PH (505) 348-4000
 FAX (505) 348-4072
 www.wilsonco.com

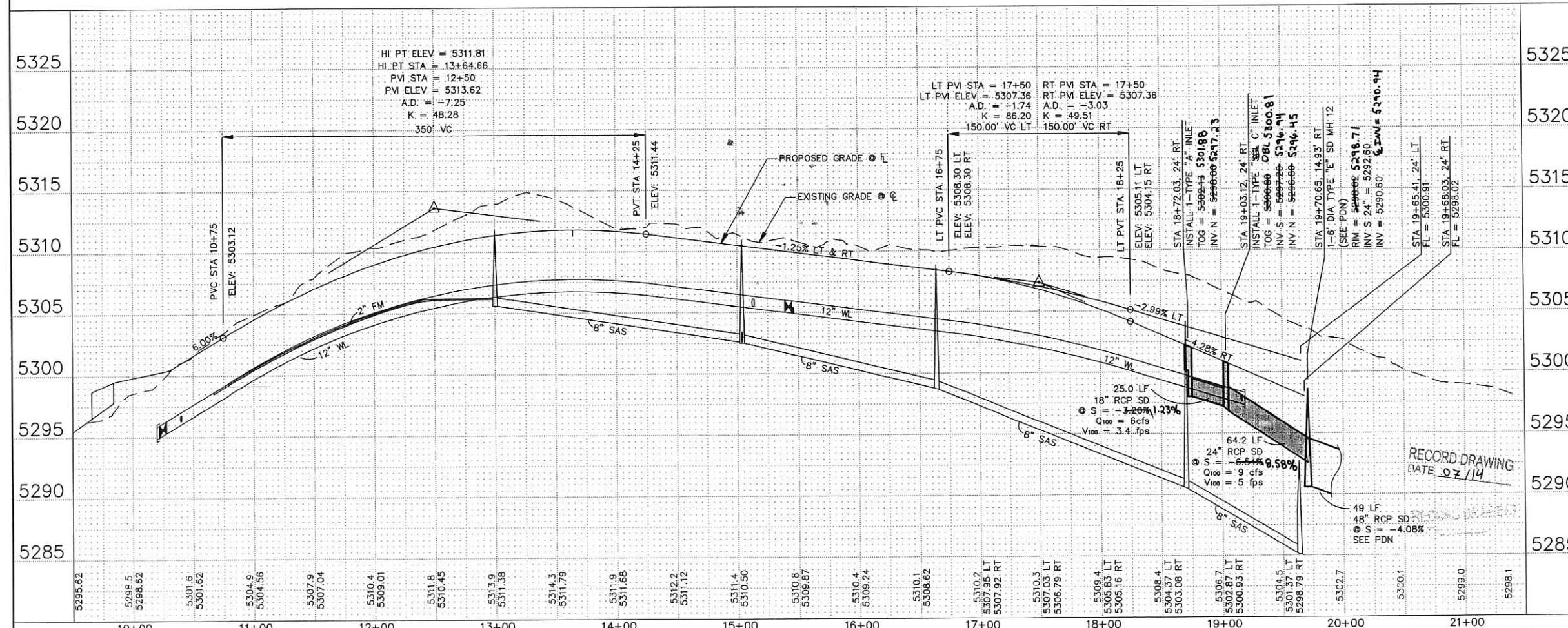
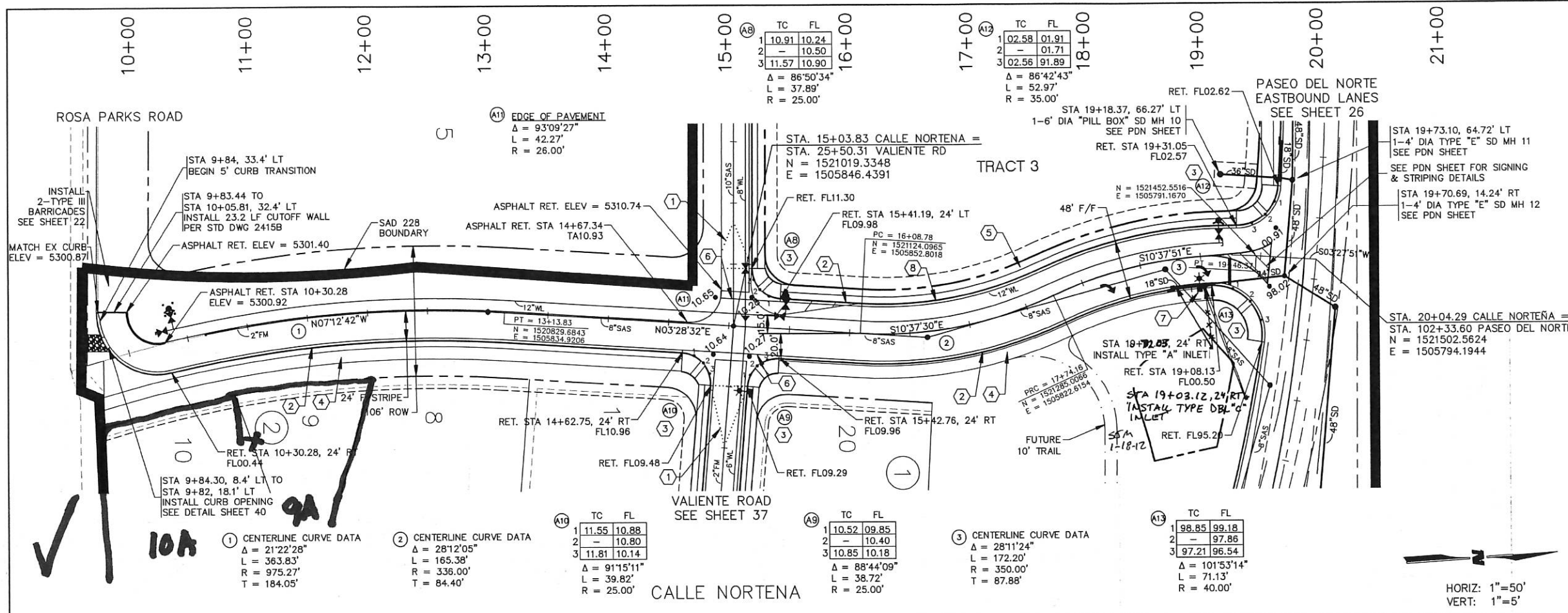
CITY OF ALBUQUERQUE
 DEPARTMENT OF MUNICIPAL DEVELOPMENT
 ENGINEERING DIVISION
SPECIAL ASSESSMENT DISTRICT 228-VOL. 3
OVERALL WATER & SANITARY SEWER PLAN - UNIT 27

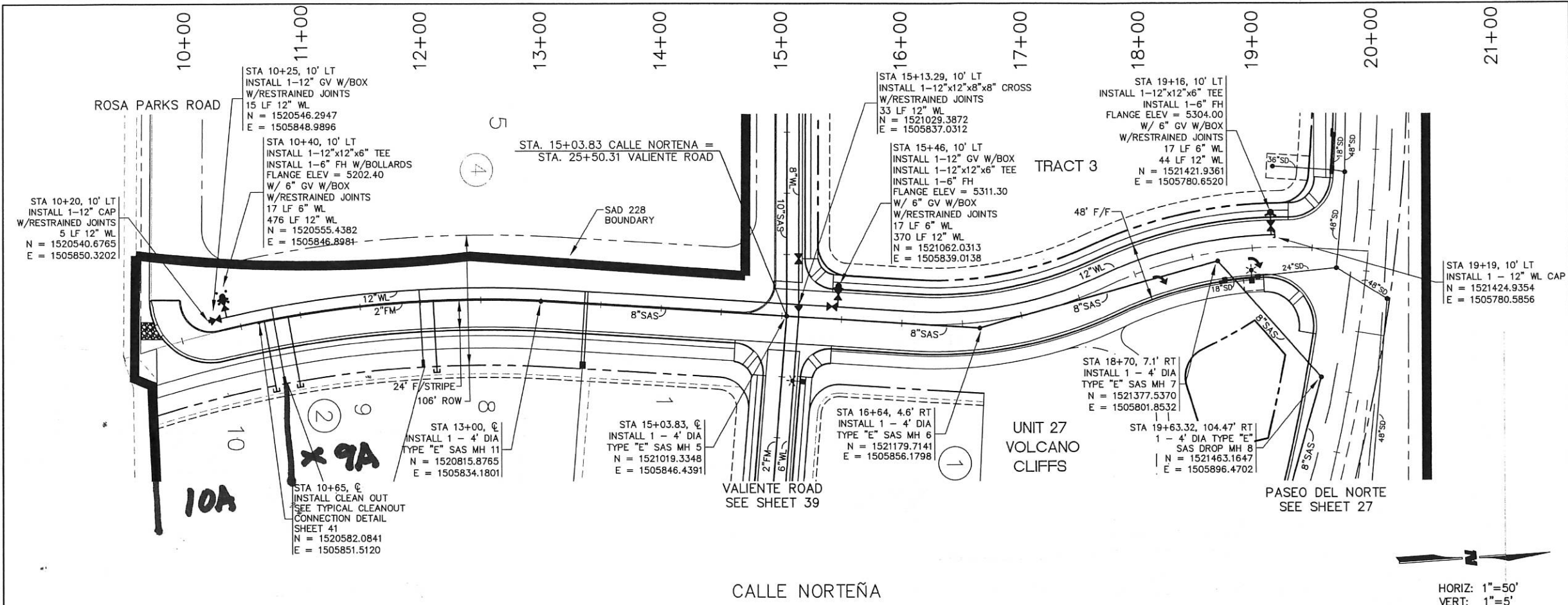
Design Review Committee APPROVED JAN 17 2012	City Engineer Approval APPROVED JAN 17 2012	Me./Day/Yr.	Me./Day/Yr.
City Project No. 693391	Zone Map No. D-10, D-11	Sheet 18	Of 46

RECORD DRAWING
 DATE 07/14

WCEA # 0840010400
 DEC 2011

AS-BUILT INFORMATION	
CONTRACTOR	AUT
WORK STARTED BY	AUT
DATE	07/14
FIELD ACCEPTANCE BY	WCT
DATE	07/14
FIELD REVISION BY	WCT
DATE	07/14
DRAWN BY	WCT
CHECKED BY	WCT
RECORDED BY	MICRO-FILM INFORMATION
DATE	
BENCH MARKS	
ACS BRASS CAP, STAMPED "3-E10"	
SET IN TOP OF CONCRETE POST PROJECTING 0.30 FT. ABOVE GROUND. LOCATED APPROX. 225' E OF THE INTERSECTION OF RIM ROCK DR. NW AND MARIGOLD DR. NW (NAD 1983), X 1499059.808, Y 1512627.946	
ELEVATION = 5318.89 FT. (NAVD 1988)	
SURVEY INFORMATION	
FIELD NOTES	DATE
NO.	BY
ENGINEER'S SEAL	
REVISIONS	BY
NO.	DATE
DESIGNED BY	DATE
DRAWN BY	DATE
CHECKED BY	DATE





NOTES:

- "GREEN" C-900 WILL BE USED IN LOCATIONS WHERE WATERLINE AND SANITARY SEWER DO NOT HAVE 10' MIN HORIZONTAL SEPERATION.
- INSTALL DUCTILE IRON WATERLINE PIPE AT WATERLINE/SANITARY SEWER VERTICAL CROSSINGS PER DETAIL SHEET 41.
- ALL WATERLINE INSTALLATION SHALL BE C-900 DR 18 PVC PIPE.
- ALL SANITARY SEWER INSTALLATION SHALL BE SDR 35 PVC PIPE.
- FIRE HYDRANT PER STD DWG 2430.
- GATE VALVE WITH BOX PER STD DWGS 2326, 2328 & 2333.

BENCH MARKS
 ACS BRASS CAP, STAMPED "3-E10"
 SET IN TOP OF CONCRETE POST PROJECTING 0.30 FT. ABOVE GROUND. LOCATED APPROX. 225' E OF THE INTERSECTION OF RIM ROCK DR. NW AND MARGOLD DR. NW (NAD 1983). X 1499059.808, Y 1512627.946
 ELEVATION = 5318.89 FT. (NAVD 1988)

CALLE NORTEÑA

3/4" WATER SERVICES

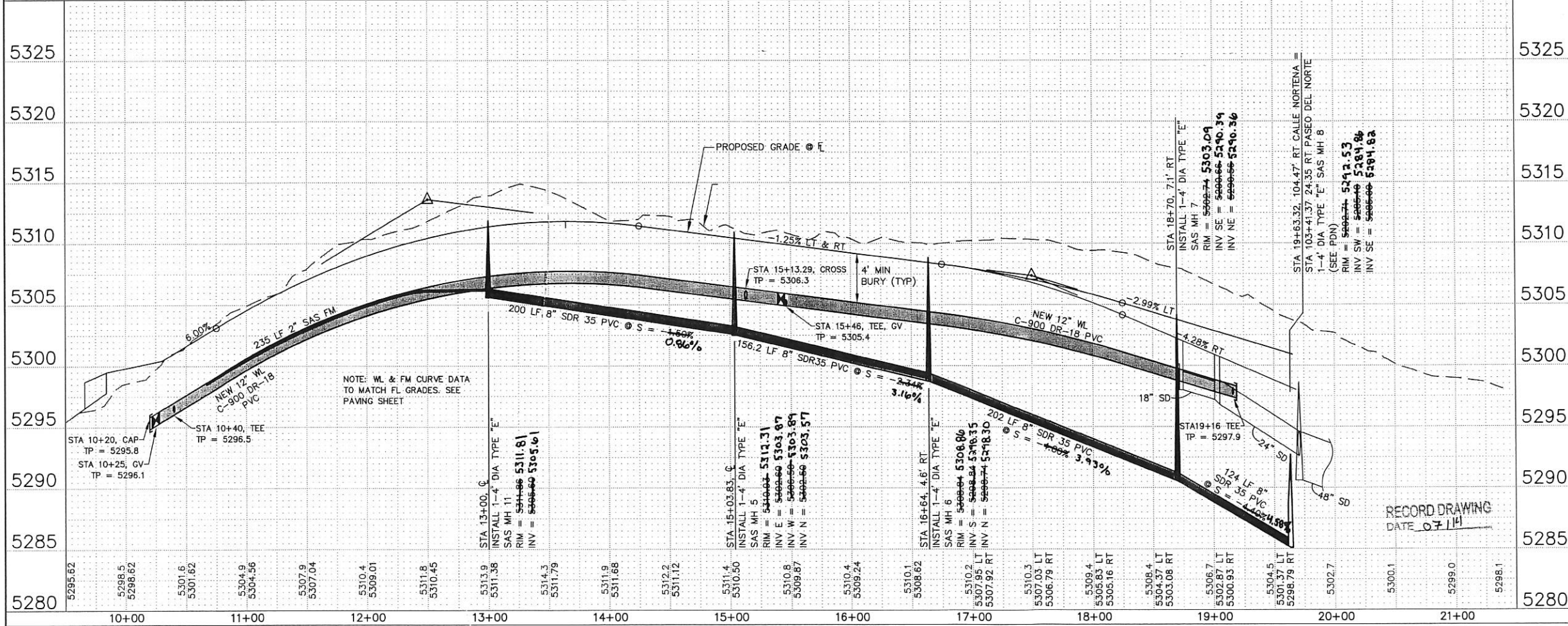
STATION	LOT	BLK	TYPE	LENGTH	REMARKS
10+77	10	2	SINGLE	63'	RIGHT
11+99	9	2	SINGLE	63'	RIGHT
13+38	1,8	2	DOUBLE	63'	RIGHT

CALLE NORTEÑA

1 1/4" FM LATERAL SERVICE*

STATION	LOT	BLK	INV @ PL	LENGTH	REMARKS
10+69	10	2	97.50	58'	RIGHT
10+90	9	2	97.30	58'	RIGHT
12+11	8	2	102.70	58'	RIGHT

* SEE DETAIL SHEET 41.



WILSON & COMPANY

4900 LANG AVE NE
 ALBUQUERQUE, NEW MEXICO 87109
 PH (505) 348-4000
 FAX (505) 348-4072
 www.wilsonco.com

CITY OF ALBUQUERQUE
 DEPARTMENT OF MUNICIPAL DEVELOPMENT

SPECIAL ASSESSMENT DISTRICT 228 - VOL. 3
 UTILITY PLAN & PROFILE
 CALLE NORTEÑA

Design Review Committee: JAN 17 2012
 City Engineer Approval: JAN 17 2012

M:\RR\08-400-104-00\CADD\SHEETS\UNITS 26-27\PNP Util\PNPUtil_Calle Norteña.dwg 1/11/2012 6:05:40 PM MST

