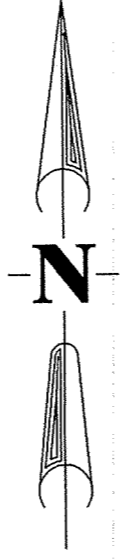
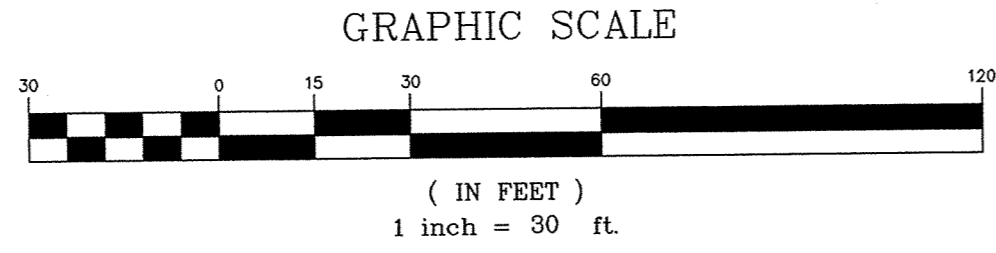
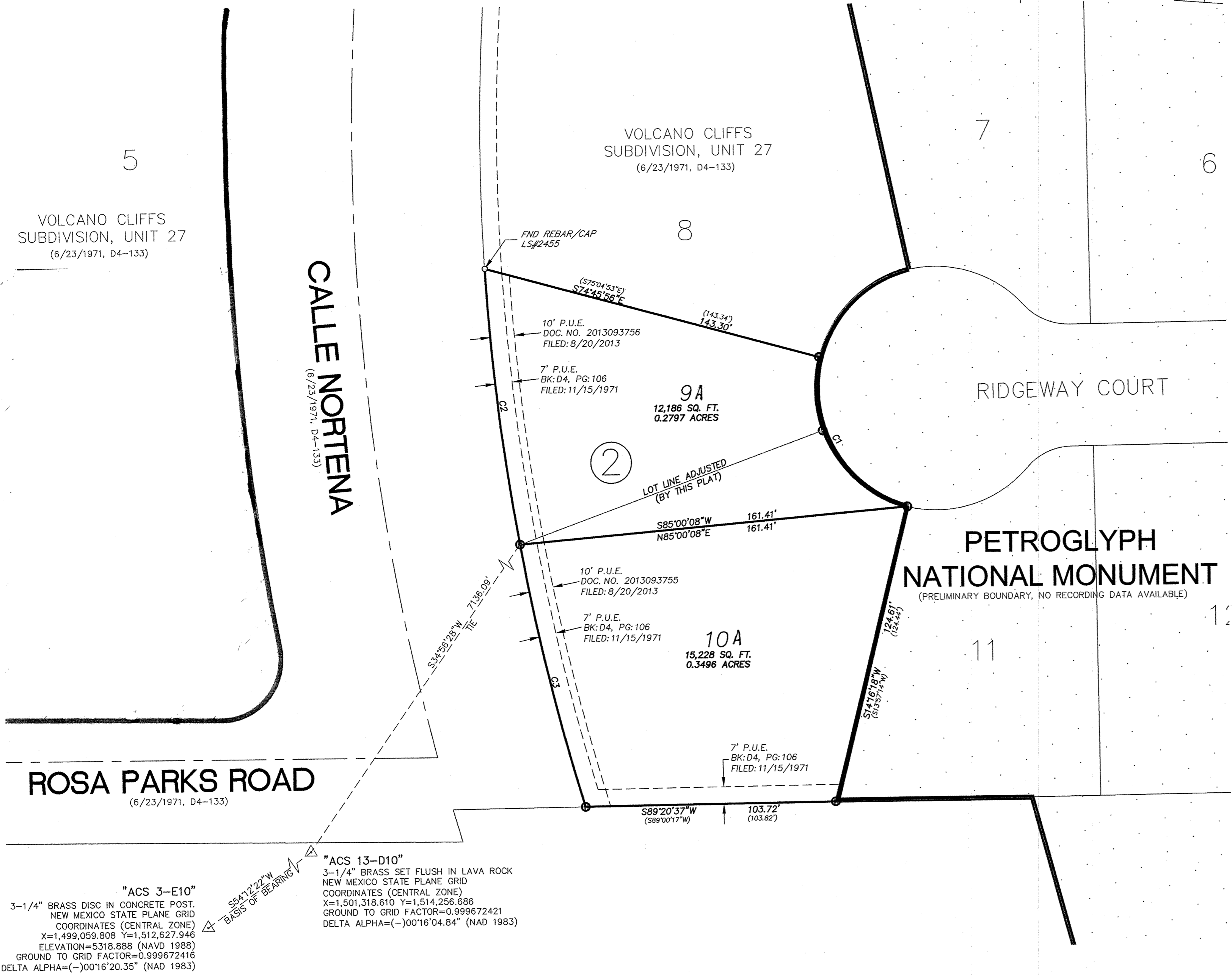


CURVE	LENGTH	RADIUS		DELTA		TANGENT	CHORD	CHORD DIRECTION
		(79.38')	(50.00')	(90°57'46")	(07°05'34")			
C1	79.38'	50.00'	(50.00')	90°57'46"	07°05'34"	50.85'	71.30'	S30°14'49"E
C2	114.72'	922.27'	(922.27')	07°05'34"	(07°05'40")	57.16'	114.10'	N06°44'05"W
C3	111.13'	922.27'	(922.27')	06°54'15"	(06°53'44")	55.63'	111.07'	N13°44'00"W



PLAT OF  
**LOTS 9 AND 10,**  
**VOLCANO CLIFFS SUBDIVISION, UNIT 27**  
 A REPLAT OF A PORTION OF BLOCK 2  
 VOLCANO CLIFFS SUBDIVISION, UNIT 27  
 WITHIN SECTIONS 14 AND 23,  
 TOWNSHIP 11 NORTH, RANGE 2 EAST  
 NEW MEXICO PRINCIPAL MERIDIAN  
 CITY OF ALBUQUERQUE  
 BERNALILLO COUNTY, NEW MEXICO  
 NOVEMBER 2016



- LEGEND
- FOUND PROPERTY CORNER AS NOTED
  - SET REBAR WITH PLASTIC CAP "METRO PS10025"



**WILSON & COMPANY**  
 4900 LANG AVENUE N.E.  
 ALBUQUERQUE, NEW MEXICO  
 87109  
 (505) 348-4000  
 SHEET 2 OF 2

"ACS 3-E10"  
 3-1/4" BRASS DISC IN CONCRETE POST.  
 NEW MEXICO STATE PLANE GRID  
 COORDINATES (CENTRAL ZONE)  
 X=1,499,059.808 Y=1,512,627.946  
 ELEVATION=5318.888 (NAVD 1988)  
 GROUND TO GRID FACTOR=0.999672416  
 DELTA ALPHA=(-)00°16'20.35" (NAD 1983)

"ACS 13-D10"  
 3-1/4" BRASS SET FLUSH IN LAVA ROCK  
 NEW MEXICO STATE PLANE GRID  
 COORDINATES (CENTRAL ZONE)  
 X=1,501,318.610 Y=1,514,256.686  
 GROUND TO GRID FACTOR=0.999672421  
 DELTA ALPHA=(-)00°16'04.84" (NAD 1983)