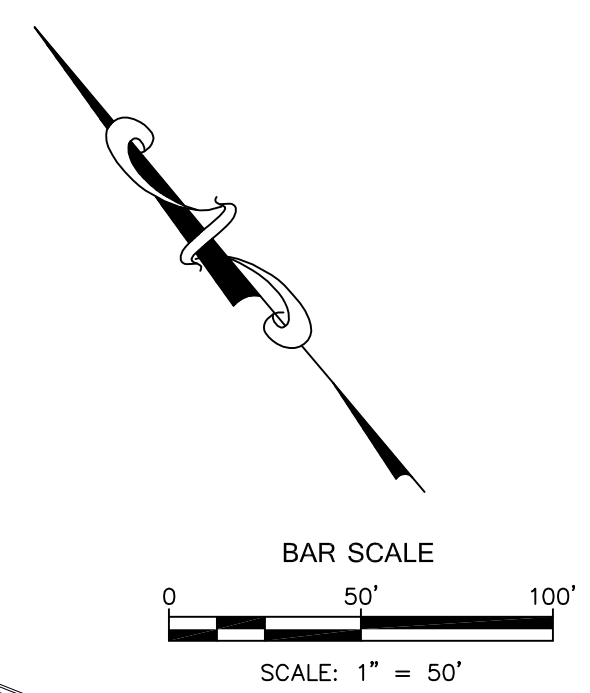


**Exhibit**  
for  
**Tracts A-1 and A-4**  
**North Town Plaza**  
City of Albuquerque  
Bernalillo County, New Mexico  
November 2016

ACS Monument "13-E20"  
NAD 1983 CENTRAL ZONE  
X=1550598.401  
Y=1511612.268  
Z=N/A (NAVD 1988)  
G=G=0.999650558  
Mapping Angle=-0°10'22.86"



Line Table		
Line #	Direction	Length (ft)
L1	N 54°08'59" E (N 54°00'02" E)	12.21' (12.21')
L2	S 21°22'04" E (S 21°32'21" E)	12.00' (12.00')
L3	N 39°58'36" W (N 35°59'58" W)	19.26' (20.66')
L4	N 35°53'12" W (S 36°03'07" E)	49.26' (49.26')
L5	N 41°33'21" E (S 41°23'26" W)	53.23' (53.24')

Curve Table					
Curve #	Length	Radius	Delta	Chord Length	Chord Direction
C1	72.77' (72.77')	2110.09' (2110.09')	1°58'33"	72.77'	S 47°28'46" E
C2	532.96' (532.96')	2122.09' (2122.09')	14°23'23"	531.56'	S 39°14'09" E
C3	125.91' (126.11')	1740.00' (1740.00')	4°08'46"	125.89'	S 66°33'33" W
C4	456.38' (456.38')	1752.00' (1752.00')	14°55'30"	455.09'	S 76°05'41" W
C5	46.21' (45.88')	172.40' (172.40')	15°21'31"	46.07'	S 61°56'08" W

**Legend**

N 90°00'00" E	MEASURED BEARINGS AND DISTANCES	P	PULL BOX
(N 90°00'00" E)	RECORD BEARINGS AND DISTANCES (6/27/95, 95C-234)	☆	LIGHT POLE
○	FOUND MONUMENT AS INDICATED	⊕	ELECTRIC METER
⊕	FOUND 5/8" REBAR	T	TRANSFORMER
⊗	FOUND CHISELED "X"	EC	ELECTRIC CABINET
○	SET BATHY MARKER "LS 14271" UNLESS OTHERWISE NOTED	SB	SIGNAL BOX
⊠	COVERED AREA	A	ATM
▨	CONCRETE	GM	GAS METER
▨	BLOCK WALL	GV	GAS VALVE
▨	METAL FENCE	WV	WATER VALVE
▨	WOOD FENCE	WM	WATER METER
▨	BOLLARD	⊗	FIRE HYDRANT
⊕	SANITARY SEWER MANHOLE	⊕	ROOF DRAIN
⊕	SAS CLEANOUT	↔	CURB CUT/INDICATION OF ACCESS TO ROADWAY
		⊕	UTILITY PEDESTAL

**Purpose of Plat**

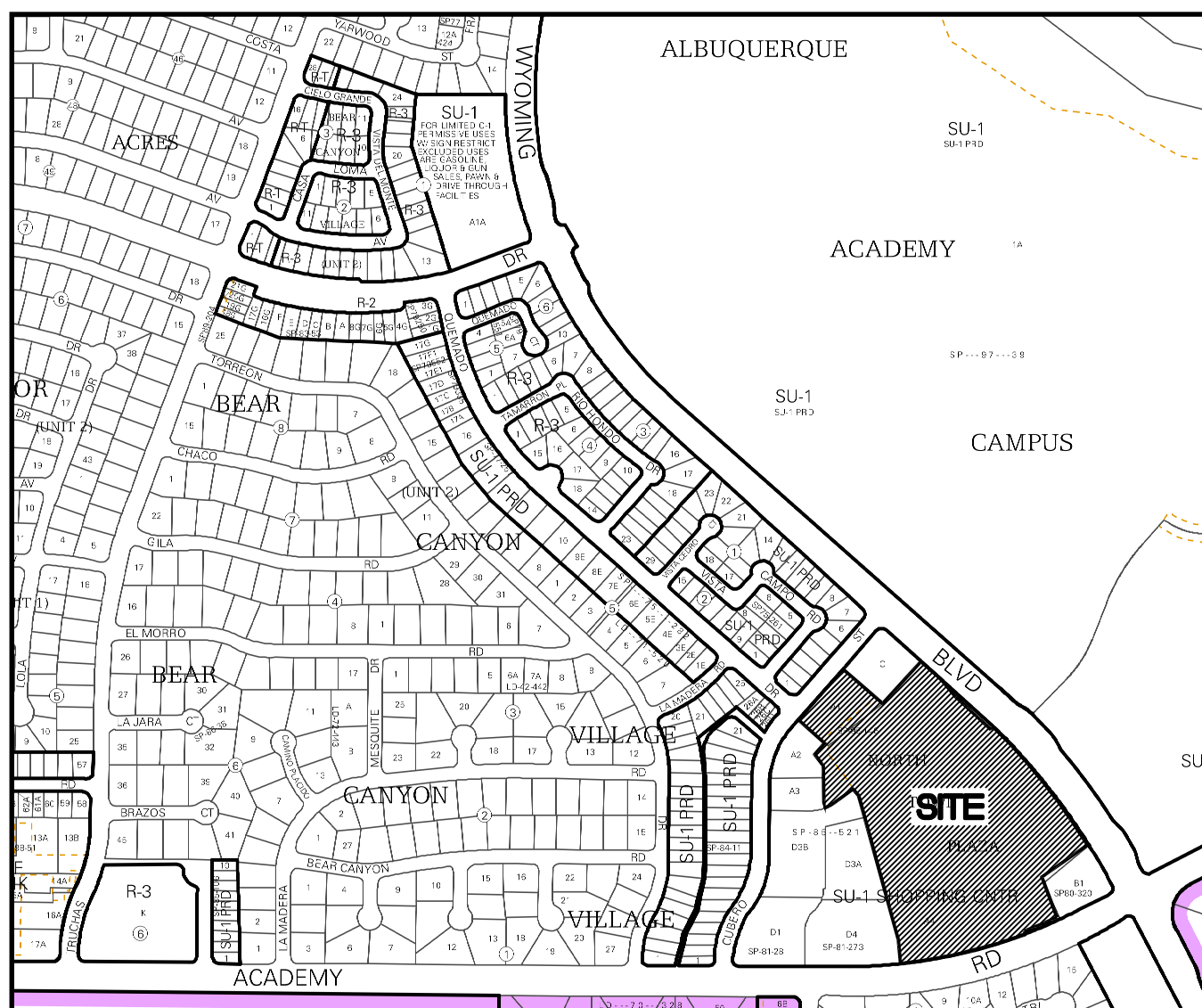
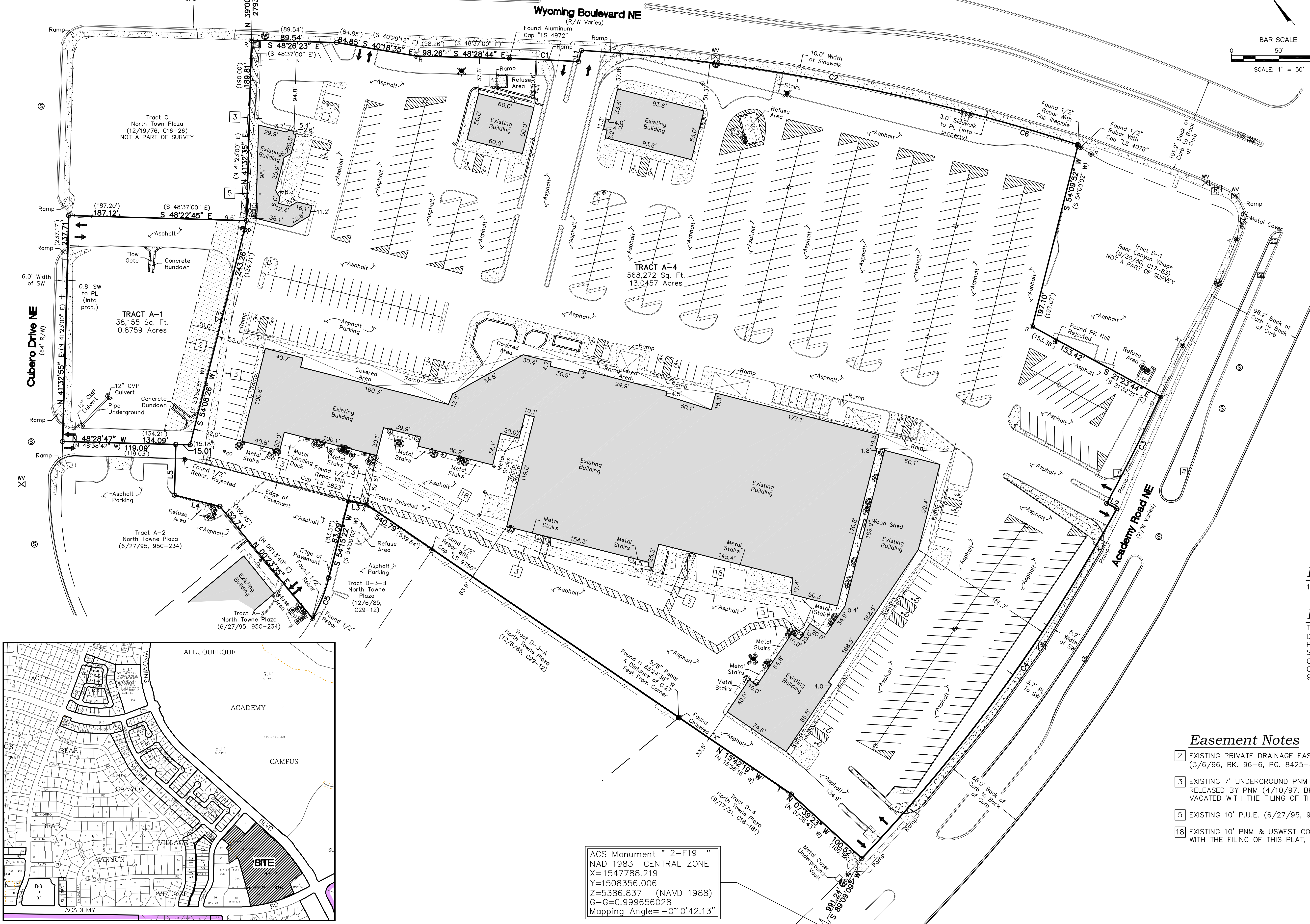
1. VACATE EASEMENTS AS SHOWN HEREON AS 2, 3, 5 AND 18

**Legal Description**

TRACTS A-1 AND A-4 OF NORTH TOWN PLAZA, AS THE SAME IS SHOWN AND DESIGNATED ON THE PLAT ENTITLED "REPLAT OF TRACT A, NORTH TOWN PLAZA FOR TRACTS A-1 THROUGH A-4, NORTH TOWN PLAZA, SITUATE WITHIN SECTION 30, T. 10 N., R. 2 E., N.M.P.M., CITY OF ALBUQUERQUE, BERNALILLO COUNTY, NEW MEXICO, APRIL 1995", FILED IN THE OFFICE OF THE COUNTY CLERK OF BERNALILLO COUNTY, NEW MEXICO, ON JUNE 27, 1995, IN BOOK 95C, PAGE 234.

**Easement Notes**

- 2 EXISTING PRIVATE DRAINAGE EASEMENT (6/27/95, 95C-234) THIS AREA SUBJECT TO DRAINAGE COVENANTS (3/6/96, BK. 96-6, PG. 8425-8469) VACATED WITH THE FILING OF THIS PLAT, SHOWN HEREON AS
- 3 EXISTING 7' UNDERGROUND PNM & MST&T EASEMENT (10/31/78, BK. MISC. 648, PG. 6-7) WAIVED AND RELEASED BY PNM (4/10/97, BK. 97-9, PG. 8596) THAT PORTION RELEASED BY PNM SHOWN HEREON AS
- 5 EXISTING 10' P.U.E. (6/27/95, 95C-234) VACATED WITH THE FILING OF THIS PLAT, SHOWN HEREON AS
- 18 EXISTING 10' PNM & USWEST COMMUNICATIONS, INC EASEMENT (4/10/97, BK. 97-9, PG. 8605) VACATED WITH THE FILING OF THIS PLAT, SHOWN HEREON AS



ACS Monument "2-F19"  
NAD 1983 CENTRAL ZONE  
X=1547788.219  
Y=1508356.006  
Z=5386.837 (NAVD 1988)  
G=G=0.999656028  
Mapping Angle=-0°10'42.13"