

Easement Notes

- 1 EXISTING 7' PNM & MST&T EASEMENT (3/3/76, BK. MISC. 467, PG. 833)
- 2 EXISTING 5' UTILITY EASEMENT (6/2/49, BK. D-166, PG. 527)
- 3 PRIVATE BLANKET UTILITY AND PRIVATE BLANKET DRAINAGE EASEMENT, EXCLUDING BUILDING ENVELOPES, BENEFITING LOTS 23-A1 AND 23-A-2, TO BE MAINTAINED BY THE OWNERS OF SAID LOTS, GRANTED WITH THE FILING OF THIS PLAT.

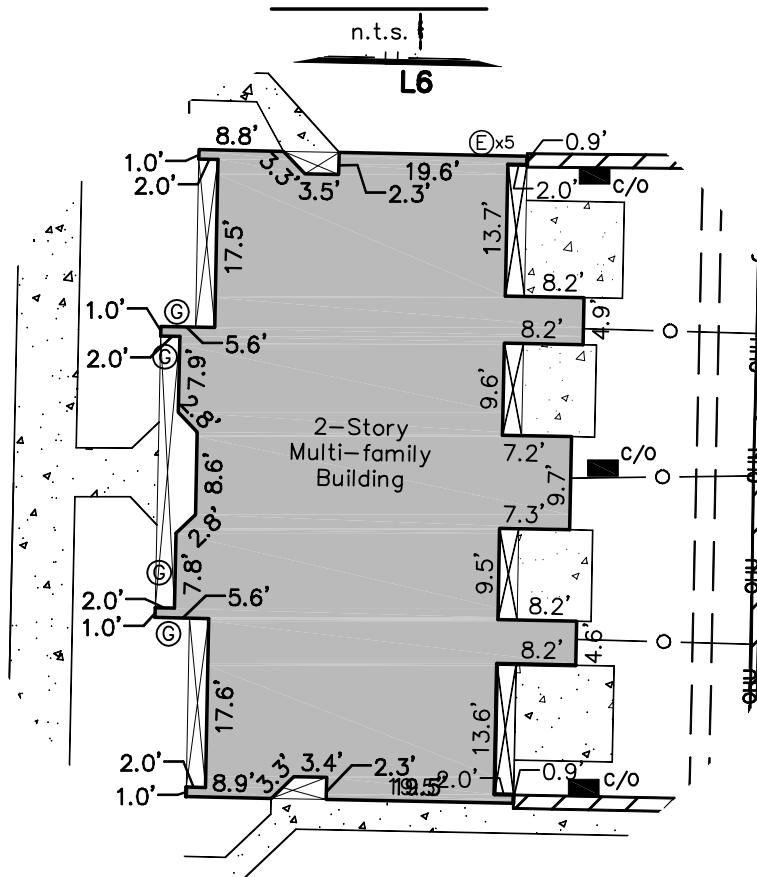
ACS Monument "14-K20"
 NAD 1983 CENTRAL ZONE
 X=1550574.948
 Y=1484692.188
 Z=5381.929 (NAVD 1988)
 G-G=0.99965568
 Mapping Angle=-0°10'21.32"

Site Sketch
 for
Lots 23-A-1 and 23-A-2,
Block 3, Waggoman-Denison
 City of Albuquerque
 Bernalillo County, New Mexico
 December 2016

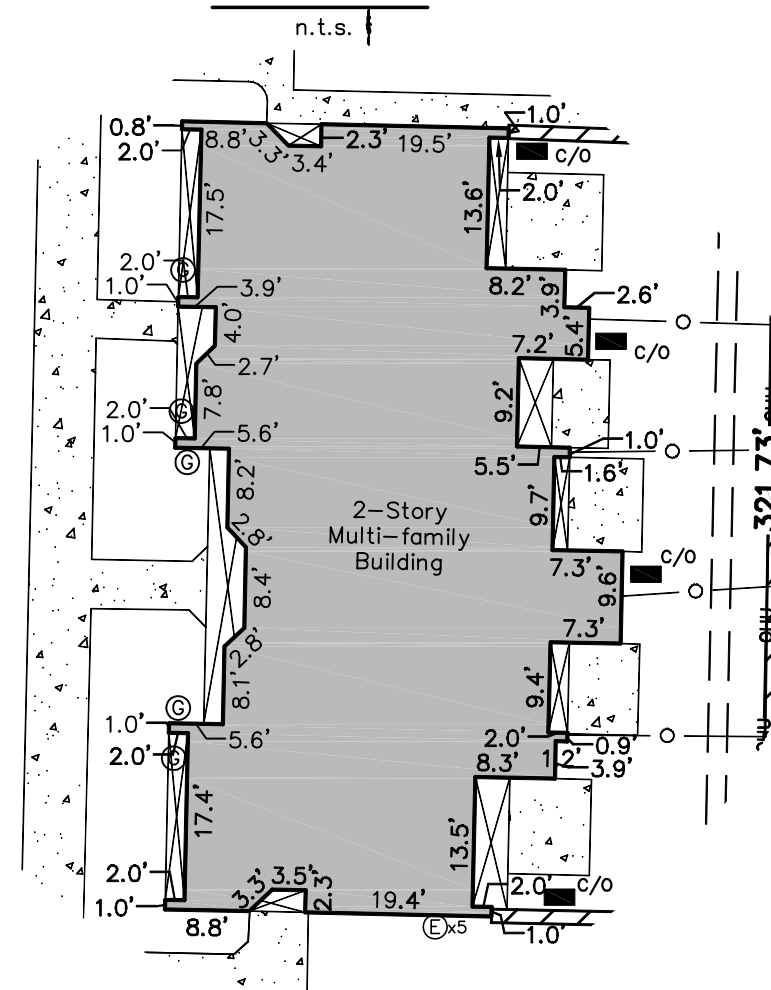
Legend

- N 90°00'00" E** MEASURED BEARINGS AND DISTANCES
(N 90°00'00" E) RECORD BEARINGS AND DISTANCES (6/17/94, 94C-201)
- FOUND MONUMENT AS INDICATED
 - SET BATHEY MARKER "LS 14271" UNLESS OTHERWISE NOTED
 - ▭ COVERED AREA
 - ▨ CONCRETE
 - ▩ BLOCK WALL
 - METAL FENCE
 - CHAINLINK FENCE
 - UTILITY PEDESTAL
 - ☆ LIGHT POLE
 - ⊕5 ELECTRIC METER (5 TOTAL)
 - ⊕ TRANSFORMER
 - OHU— OVERHEAD UTILITY LINE
 - UTILITY POLE
 - ⊙ GAS METER
 - ⊙ WATER METER
 - ⊙ FIRE HYDRANT
 - c/o SAS CLEANOUT
 - ↕ CURB CUT/INDICATION OF ACCESS TO ROADWAY

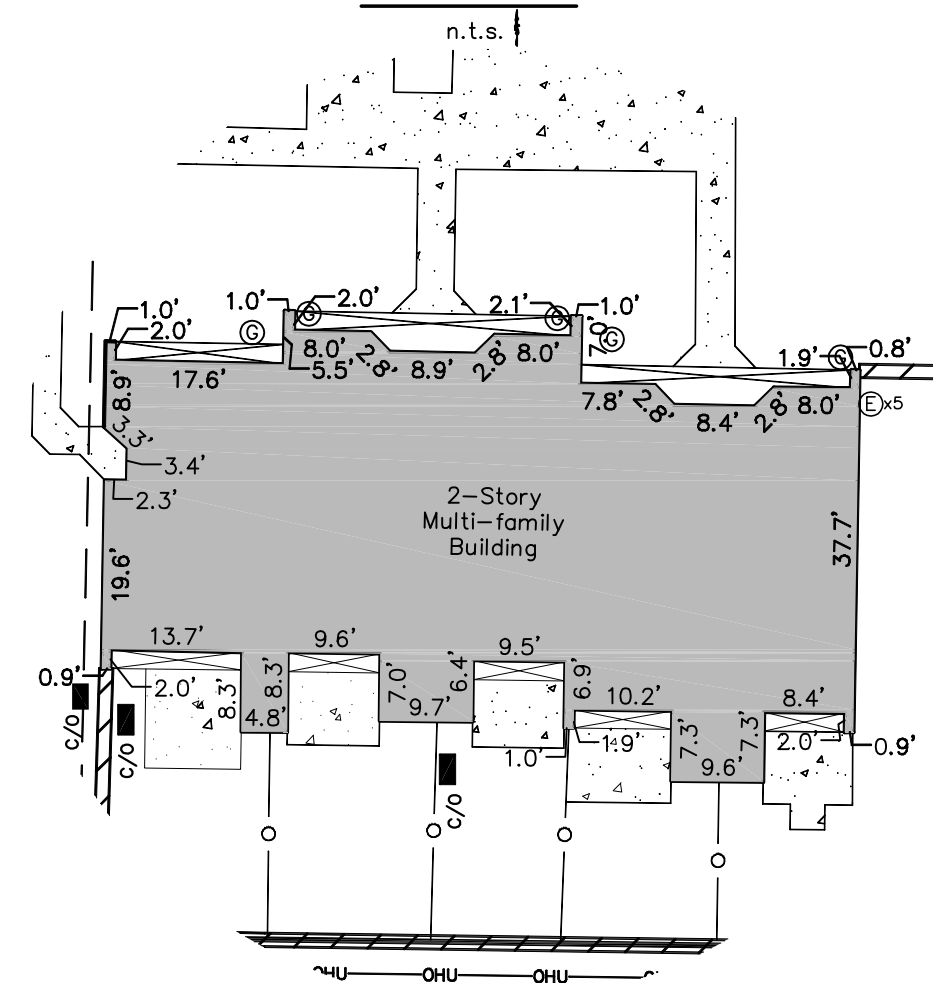
Detail 1



Detail 2

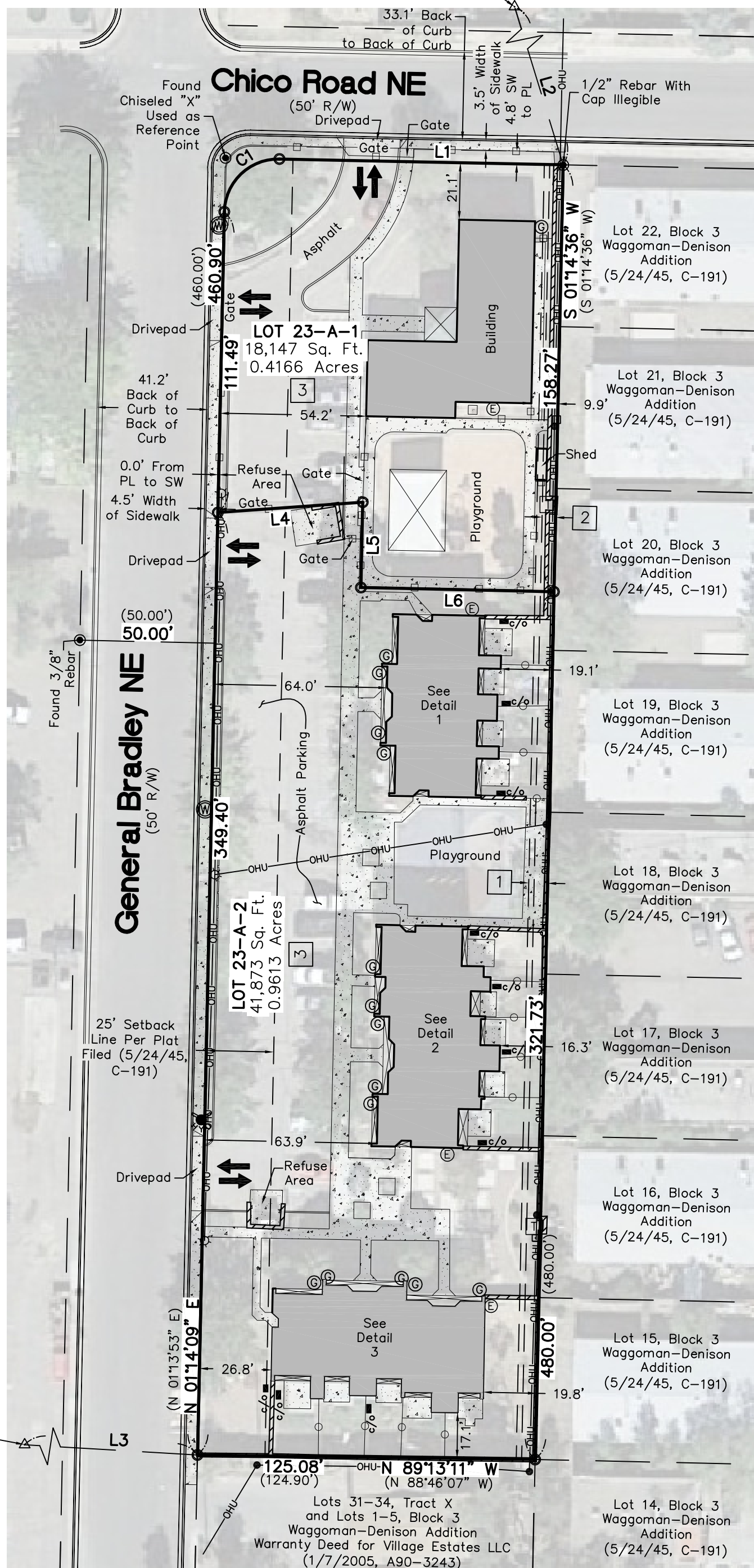


Detail 3

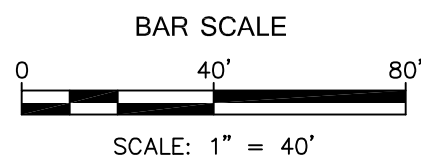


Line #	Direction	Length (ft)
L1	S 88°49'00" E (S 88°46'07" E)	105.16' (105.00')
L2	N 25°20'07" W	1685.17'
L3	N 86°38'05" W	6006.91'
L4	S 85°56'11" W	53.82'
L5	N 01°13'58" E	31.62'
L6	N 88°44'11" W	71.52'

Curve #	Length	Radius	Delta	Chord Length	Chord Direction
C1	31.40' (31.42')	20.00' (20.00')	89°56'51"	28.27'	N 46°12'34" E



ACS Monument "7-K19"
 NAD 1983 CENTRAL ZONE
 X=1545165.941
 Y=1483044.082
 Z=5325.987 (NAVD 1988)
 G-G=0.999659513
 Mapping Angle=-0°10'58.61"



CARTESIAN SURVEYS INC.
 P.O. BOX 44414 RIO RANCHO, N.M. 87174
 Phone (505) 896-3050 Fax (505) 891-0244