

Site Sketch
for
Lots 9-A-1 and 9-A-2
Block 10, North
Albuquerque Acres
Tract 2, Unit 3
City of Albuquerque
Bernalillo County, New Mexico
February 2017

Legend

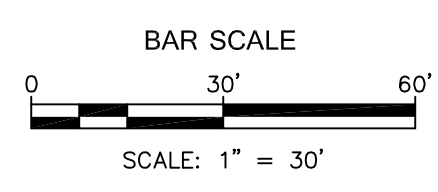
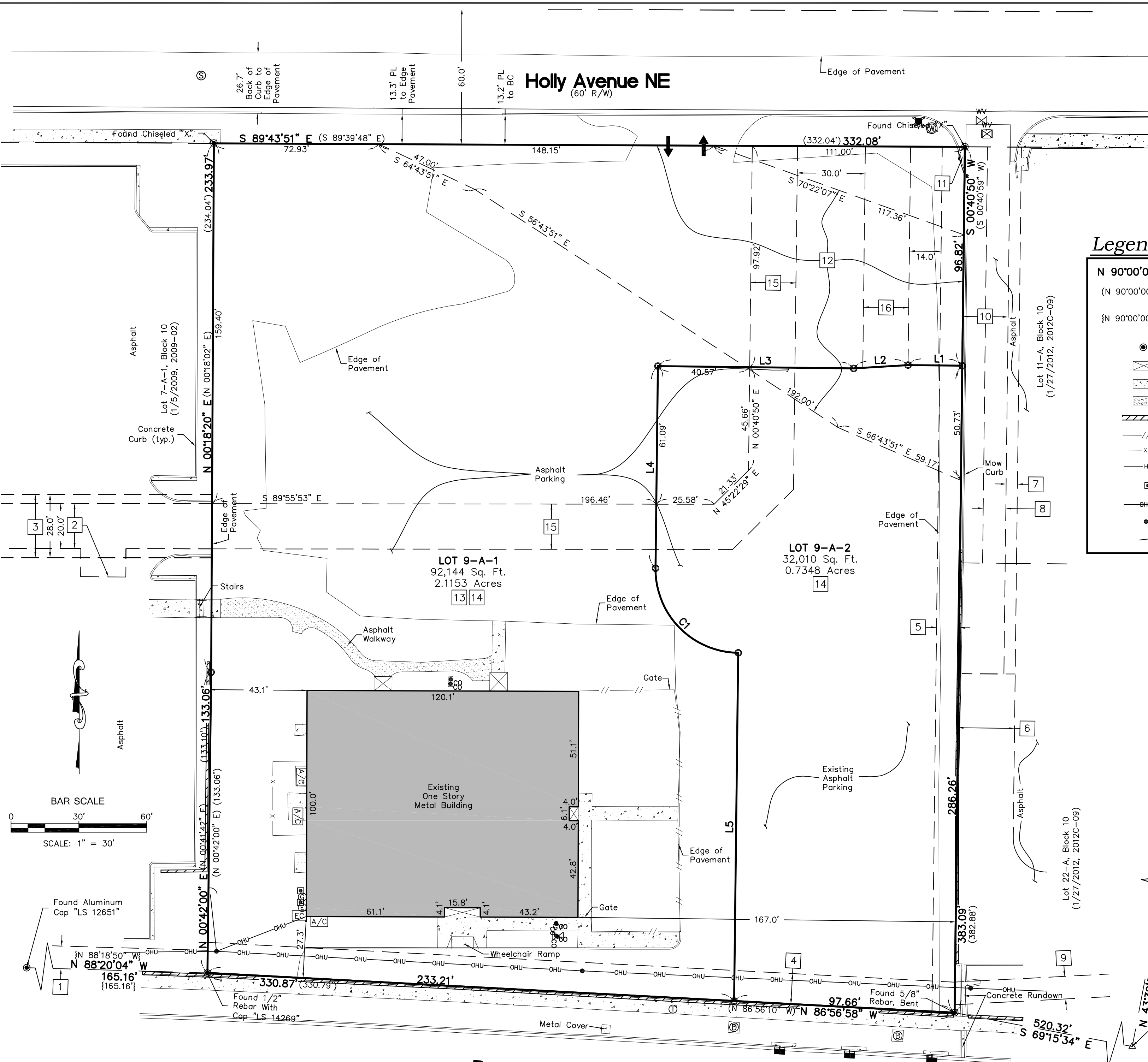
N 90°00'00" E	MEASURED BEARINGS AND DISTANCES		FIRE HYDRANT
(N 90°00'00" E)	RECORD BEARINGS AND DISTANCES (5/18/97, 97C-153)		SANITARY SEWER MANHOLE
{N 90°00'00" E}	RECORD BEARINGS AND DISTANCES (1/5/2009, 2009C-02)		SAS CLEANOUT
	FOUND MONUMENT AS INDICATED		STORM DRAIN MANHOLE
	COVERED AREA		STORM DRAIN INLET
	CONCRETE		CURB CUT/INDICATION OF ACCESS TO ROADWAY
	ASPHALT		GAS METER
	BLOCK WALL		GAS VALVE
	WOOD FENCE		TELEPHONE MANHOLE
	WIRE FENCE		WATER VALVE
	HANDRAIL		WATER METER
	BOLLARD		ELECTRIC METER
	OVERHEAD UTILITY LINE		ELECTRIC CABINET
	UTILITY POLE		A/C UNIT
	ANCHOR		

Curve #	Length	Radius	Delta	Chord Length	Chord Direction
C1	58.12'	37.00'	90°00'00"	52.33'	S 44°19'10" E

Line #	Direction	Length (ft)
L1	S 89°19'10" E	24.00'
L2	N 86°27'39" E	24.07'
L3	S 89°19'10" E	86.57'
L4	N 00°40'50" E	89.42'
L5	N 00°40'50" E	154.04'

ACS Monument " 7-C19 "
NAD 1983 CENTRAL ZONE
X=1550417.138
Y=1522068.52
Z=5485.723 (NAVD 1988)
G-G=0.999650745
Mapping Angle=-0°10'24.78"

ACS Monument " HEAVEN "
NAD 1983 CENTRAL ZONE
X=1547297.145
Y=1518799.515
Z=5378.235 (NAVD 1988)
G-G=0.99965581
Mapping Angle=-0°10'46.22"



Paseo Del Norte NE
(R/W Varies) NM ROW Proj. No. TPU-4054(3)

CARTESIAN SURVEYS INC.

P.O. BOX 44414 RIO RANCHO, N.M. 87174
Phone (505) 896-3050 Fax (505) 891-0244