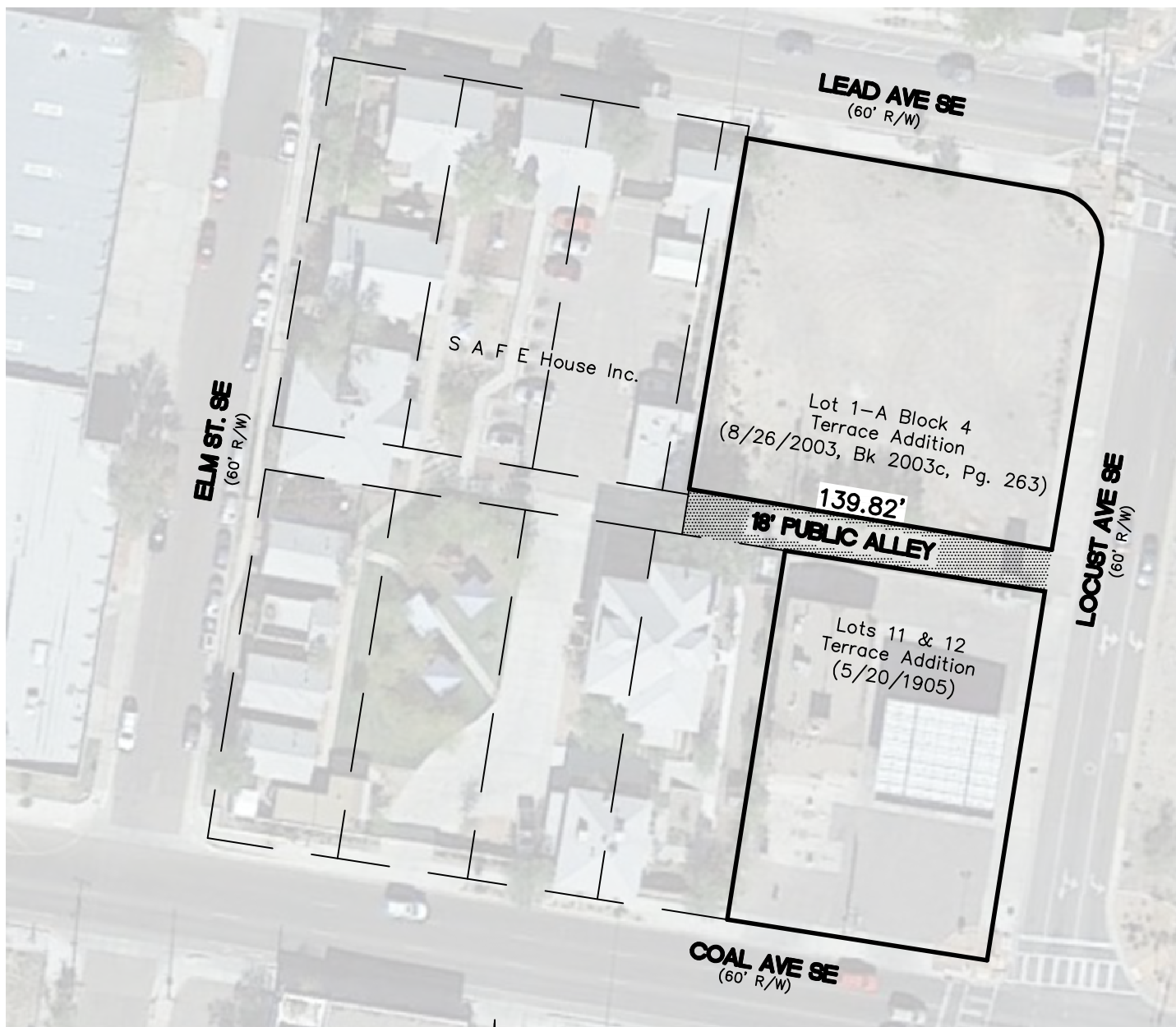


Exhibit for
Vacation of 18' Public Alley
located between Locust Ave. S.E.
and Elm St S.E. and between
Lead Ave. S.E. and Coal Ave.S.E.

City of Albuquerque
 Bernalillo County, New Mexico
 February 2017

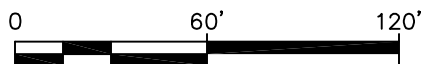


Legend

 Proposed Vacation



BAR SCALE



SCALE: 1" = 60'

CARTESIAN SURVEYS INC.

P.O. BOX 44414 RIO RANCHO, N.M. 87174
 Phone (505) 896 - 3050 Fax (505) 891 - 0244