

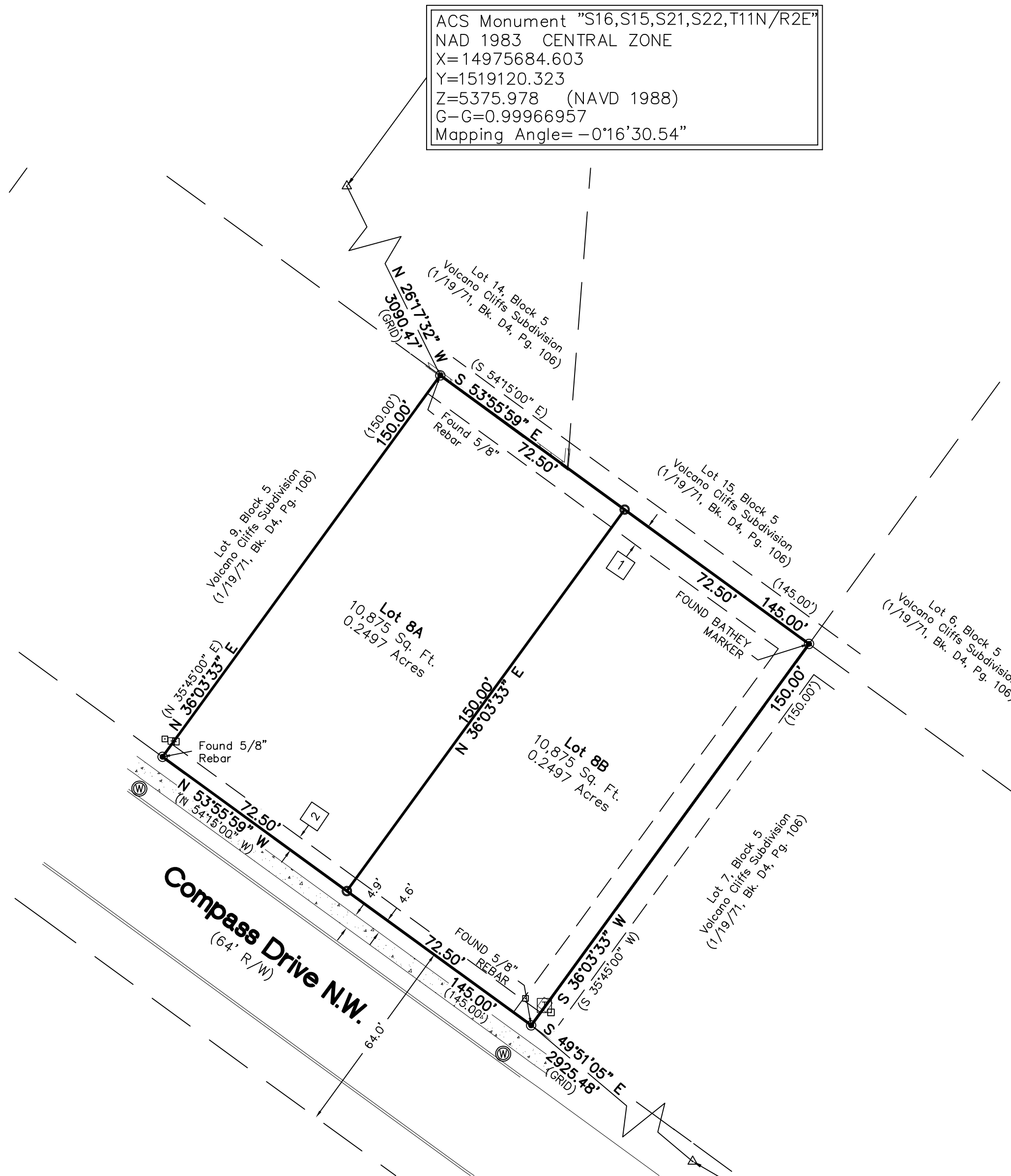
Easement Notes

- 1 EXISTING 7' PUE EASEMENT (1/19/71, D4-106)
- 2 5' PUE GRANTED WITH THE FILING OF THIS PLAT.

**Site Sketch for
Lot 8A and 8B, Block 5
Volcano Cliff Unit 18
Being Comprised of
Lot 8, Block 5
Volcano Cliffs Unit 18
City of Albuquerque
Bernalillo County, New Mexico
February 2017**

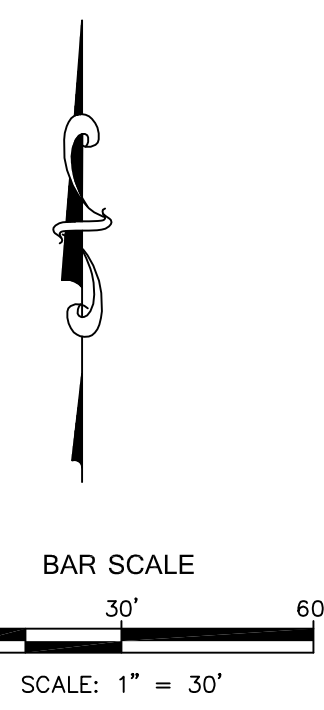
Legend

N 90°00'00" E	MEASURED BEARINGS AND DISTANCES
(N 90°00'00" E)	RECORD BEARINGS AND DISTANCES (1/19/1971, BK. D4, PG. 106)
●	FOUND MONUMENT AS INDICATED
○	SET BATHEY MARKER "LS 14271" UNLESS OTHERWISE NOTED
□	UTILITY PEDESTAL
▭	CONCRETE
▨	BLOCK WALL
T	TRANSFORMER
⊕	WATER METER



ACS Monument "S16,S15,S21,S22,T11N/R2E"
NAD 1983 CENTRAL ZONE
X=14975684.603
Y=1519120.323
Z=5375.978 (NAVD 1988)
G-G=0.99966957
Mapping Angle=-0°16'30.54"

ACS Monument "13-D10"
NAD 1983 CENTRAL ZONE
X=1501318.61
Y=1514256.686
Z=N/A (NAVD 1988)
G-G=0.999672421
Mapping Angle=-0°16'04.84"



CARTESIAN SURVEYS INC.
P.O. BOX 44414 RIO RANCHO, N.M. 87174
Phone (505) 896 - 3050 Fax (505) 891 - 0244