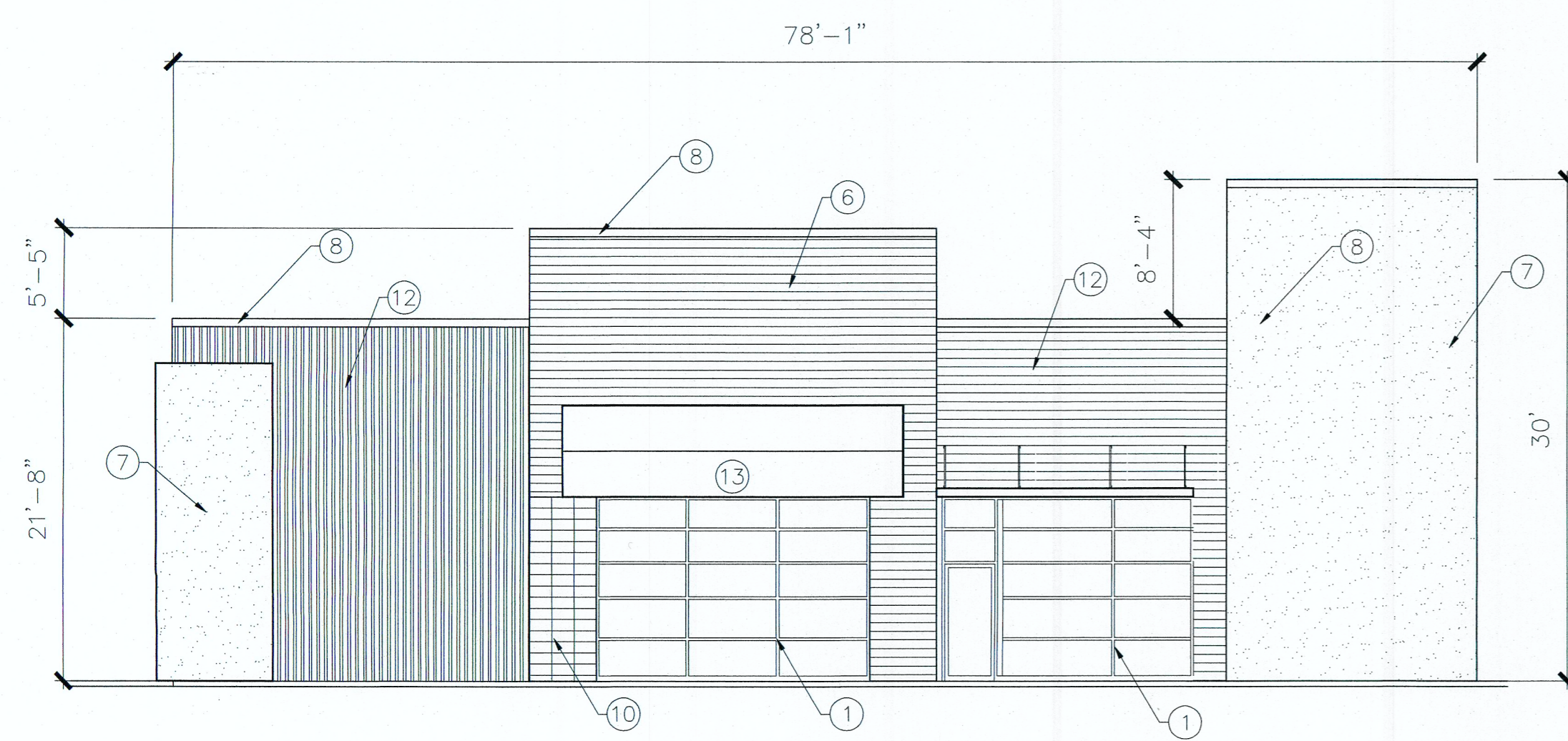


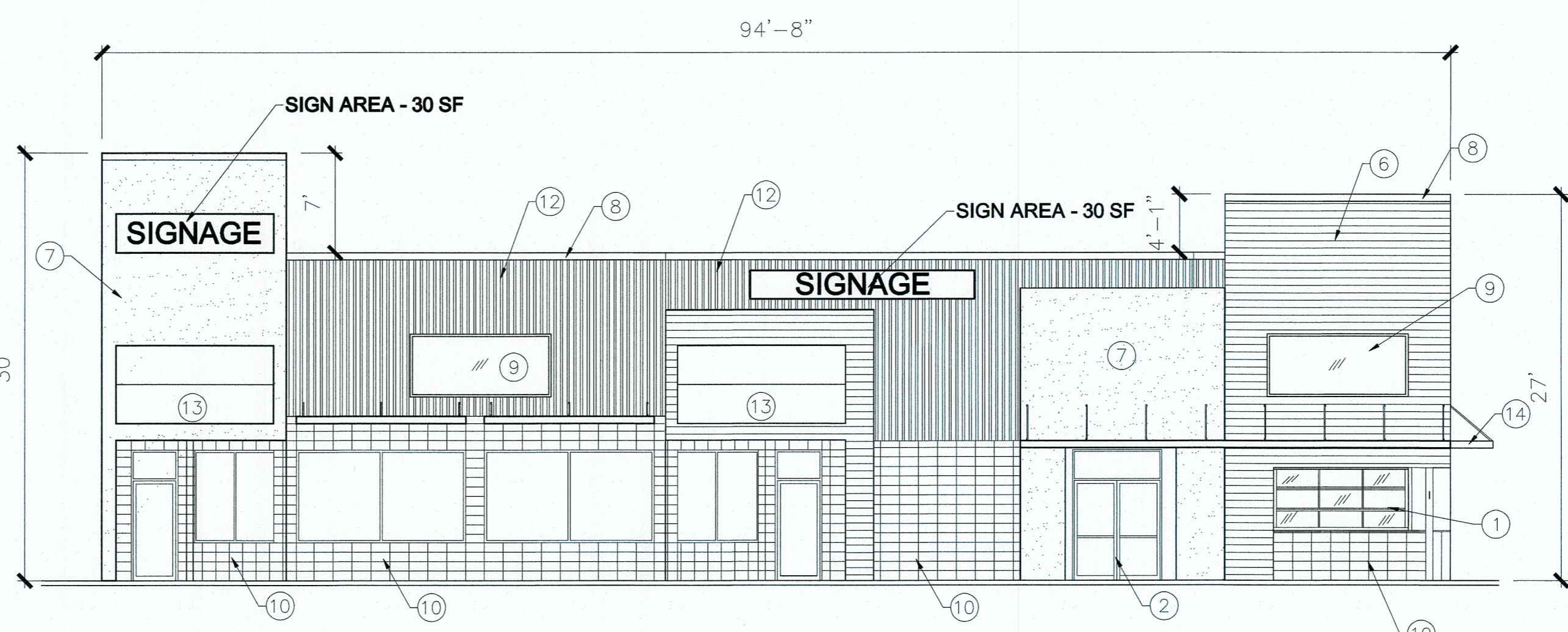
- GENERAL NOTES:**
- A. PROVIDE PREMISE IDENTIFICATION PER SECTION 505.3.2 OF THE CITY OF ALBUQUERQUE FIRE CODE.
 - B. FUTURE SIGNAGE WILL BE DETERMINED UNDER A SEPARATE PERMIT AND WILL COMPLY WITH C-1 ZONING REGULATIONS.

- KEYED NOTES:**
- 1. OVERHEAD SECTIONAL DOOR.
 - 2. EXISTING STOREFRONT SYSTEM TO REMAIN INTACT.
 - 3. NEW ALUMINUM STOREFRONT SYSTEM.
 - 4. 3'-0" X 7'-0" ALUMINUM ENTRANCE SYSTEM. PROVIDE ADA COMPLIANT PANIC HARDWARE.
 - 5. STEEL CANOPY.
 - 6. METAL WALL PANELS. METALIC 7/8", T-GROOVE PANEL, 11" HORIZONTAL PROFILE.
 - 7. EIFS SYSTEM.
 - 8. METAL COPING TO MATCH METAL WALL PANELS.
 - 9. ALUMINUM WINDOW.
 - 10. CERAMIC TILE.
 - 11. 3'-0" X 7'-0" ALUMINUM ENTRANCE SYSTEM. PROVIDE ADA COMPLIANT PANIC HARDWARE.
 - 12. METAL WALL PANELS. METALIC 7/8", T-GROOVE PANEL, 11" VERTICAL PROFILE.
 - 13. FABRIC METAL AWNING.
 - 14. METAL CANOPY, PAINTED.



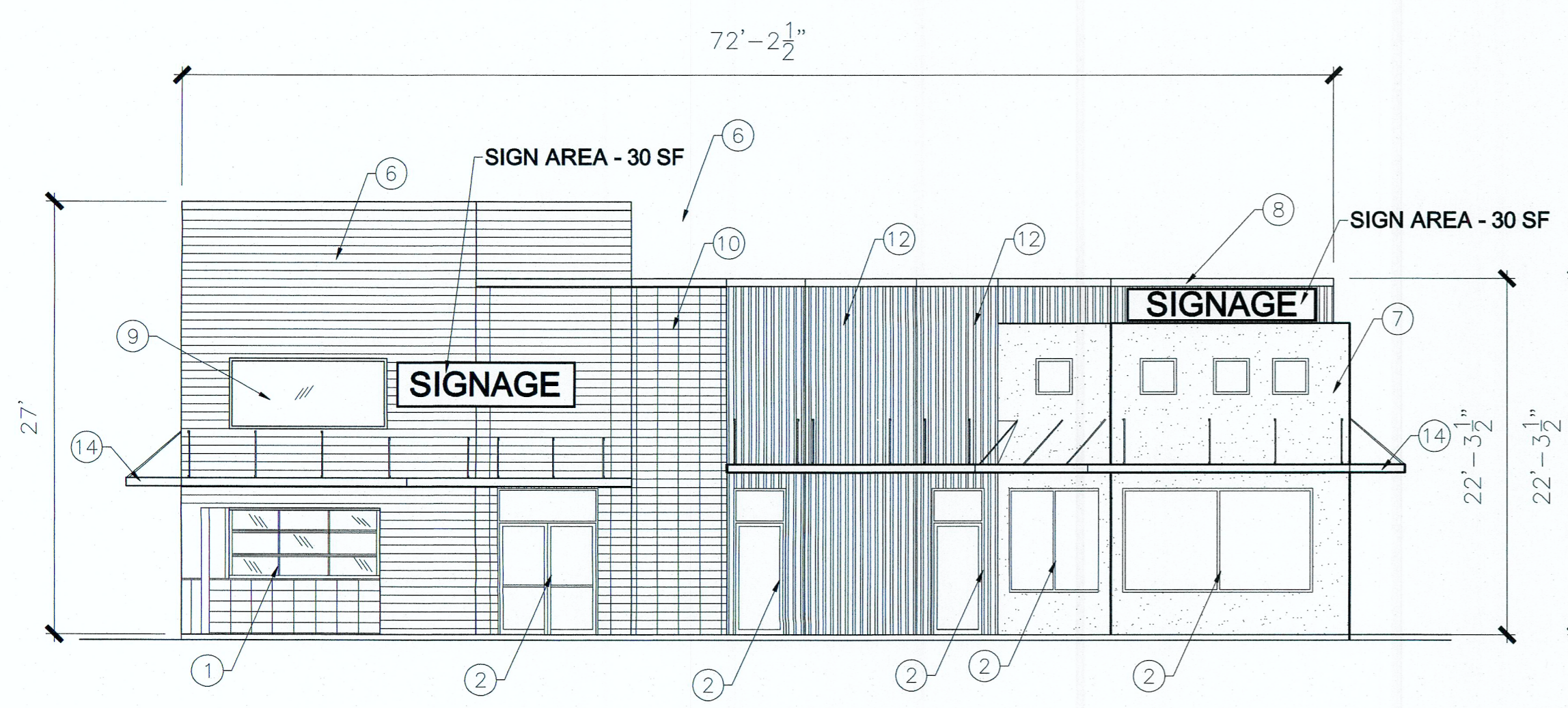
SOUTH ELEVATION

0 5' 10' 20'
1/8" = 1'-0"



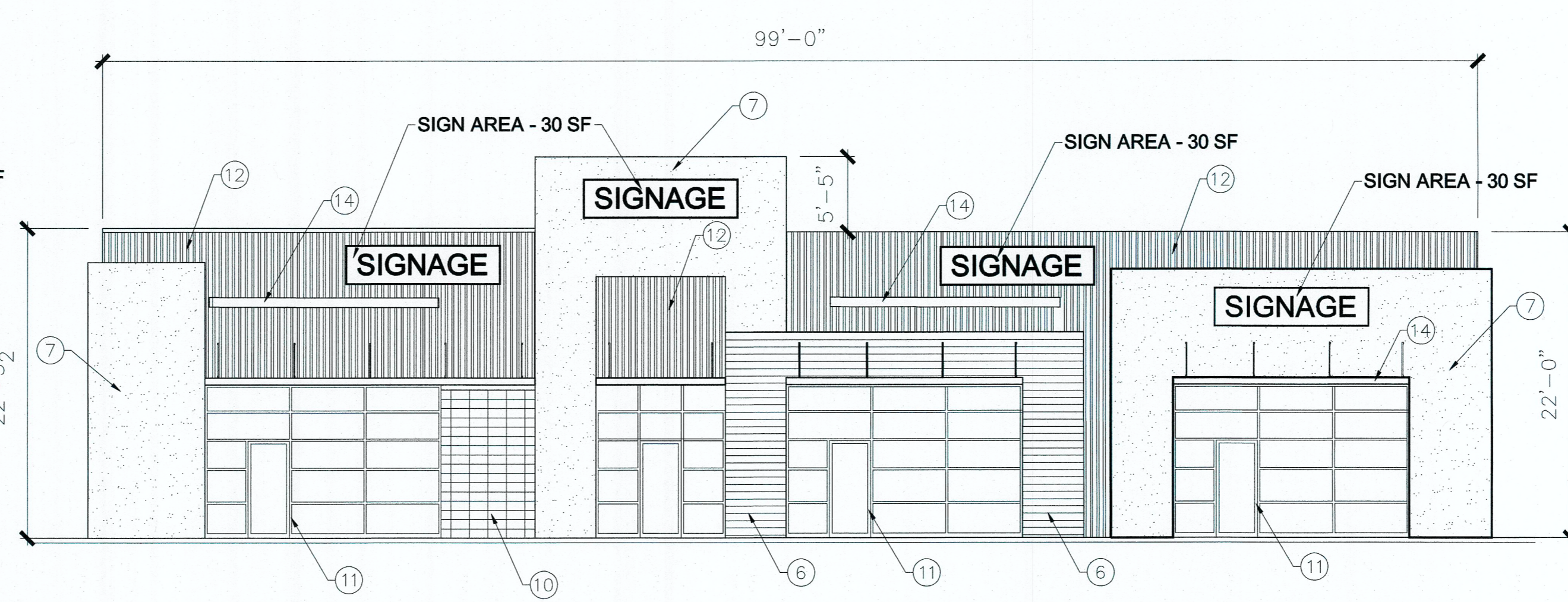
EAST ELEVATION

0 5' 10' 20'
1/8" = 1'-0"



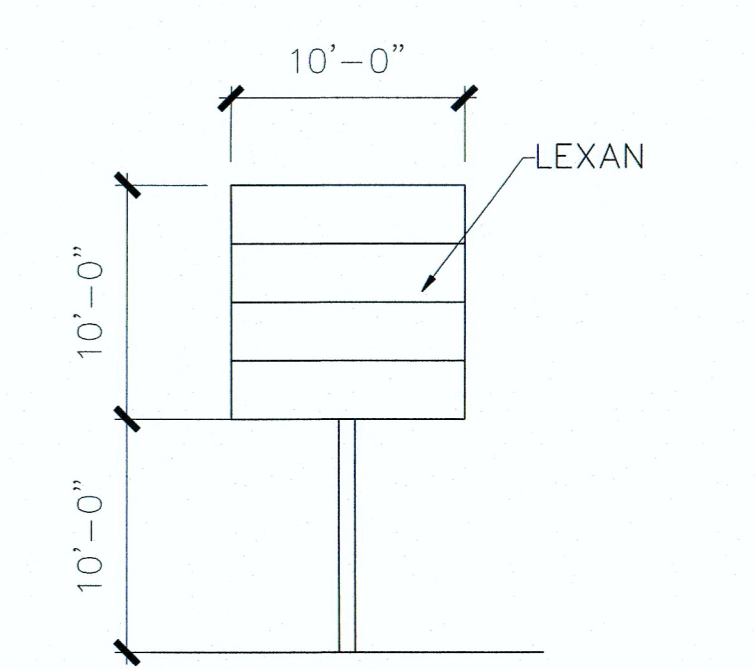
NORTH ELEVATION

0 5' 10' 20'
1/8" = 1'-0"



WEST ELEVATION

0 5' 10' 20'
1/8" = 1'-0"



EXISTING PYLON SIGN

