

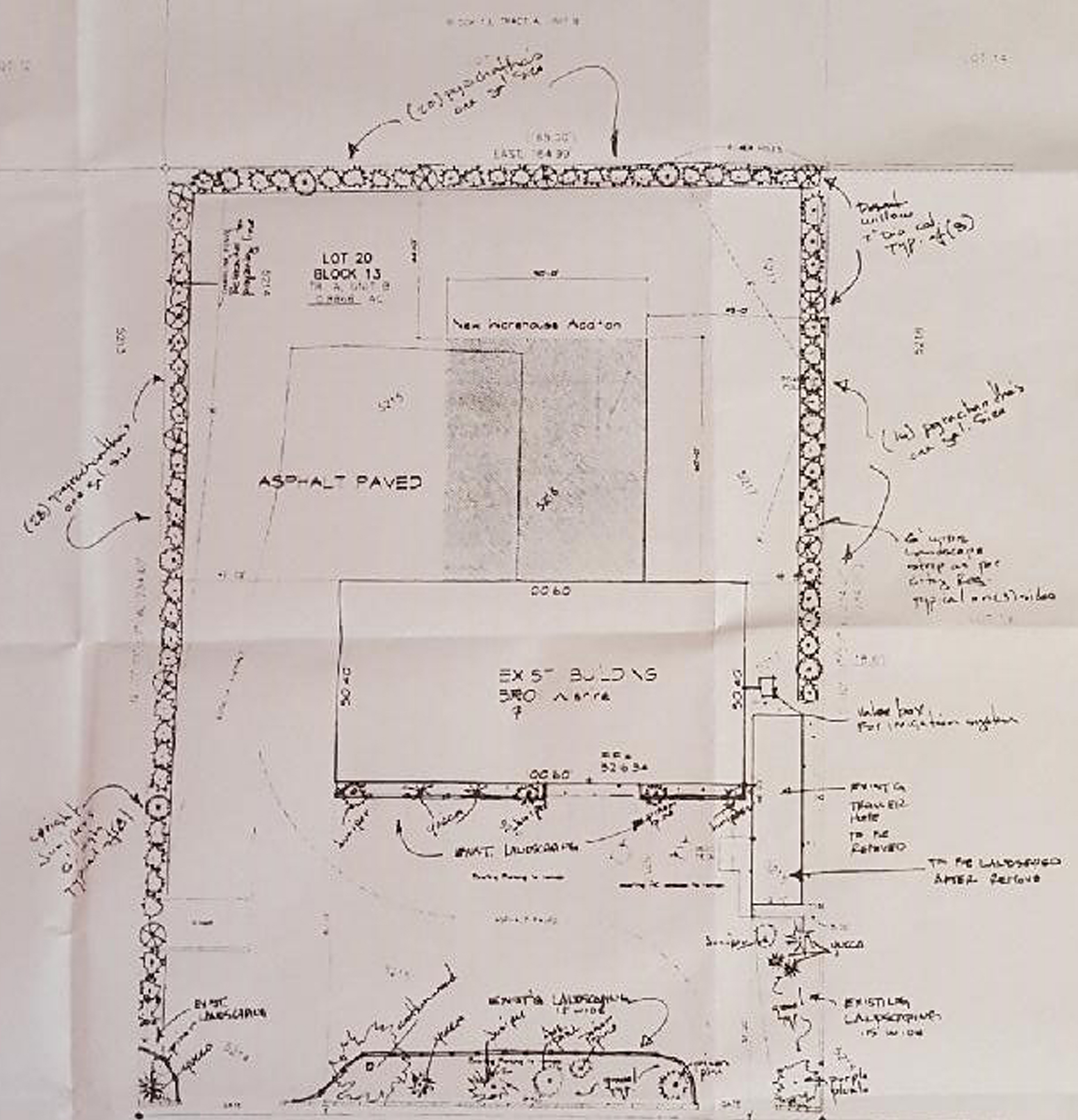
LOT 20, BLOCK 13
 TRACT A, UNIT B
 NORTH ALBUQUERQUE ACRES
 BERNALILLO COUNTY, NEW MEXICO
 MARCH, 1995

LEGAL DESCRIPTION:

LOT NUMBERED TWENTY (20) IN BLOCK NUMBERED THIRTEEN (13) TRACT A, UNIT B OF NORTH ALBUQUERQUE ACRES AND WITHIN SECTION 13, TOWNSHIP 11 NORTH, RANGE 3 EAST OF THE NEW MEXICO PRINCIPAL MERIDIAN, AS THE SAME IS SHOWN AND DESIGNATED ON THE PLAT THEREOF, FILED IN THE OFFICE OF THE COUNTY CLERK OF BERNALILLO COUNTY, NEW MEXICO ON APRIL 24, 1956 IN VOLUME D, FOLIO 150.

BASIS OF BEARINGS IS THE NEW MEXICO STATE PLANE COORDINATE SYSTEM, CENTRAL ZONE, NAD 1927

Robert A. Owens Jr. General Contractor
 4810 10th St. N.E. Albuquerque, N.M. 87110



ASPHALT PAVED
 5901 WILSHIRE AVE. N.E.
 40' R.W.

LANDSCAPE AND Site Plan



Site Plan
 FACILITY FOR ALBUQUERQUE
 BRAKE AND ALIGNMENT

SCHEIDT ALAN WALL
 ARCHITECT
 DATE: 1995
 APR 1 1995



C-1