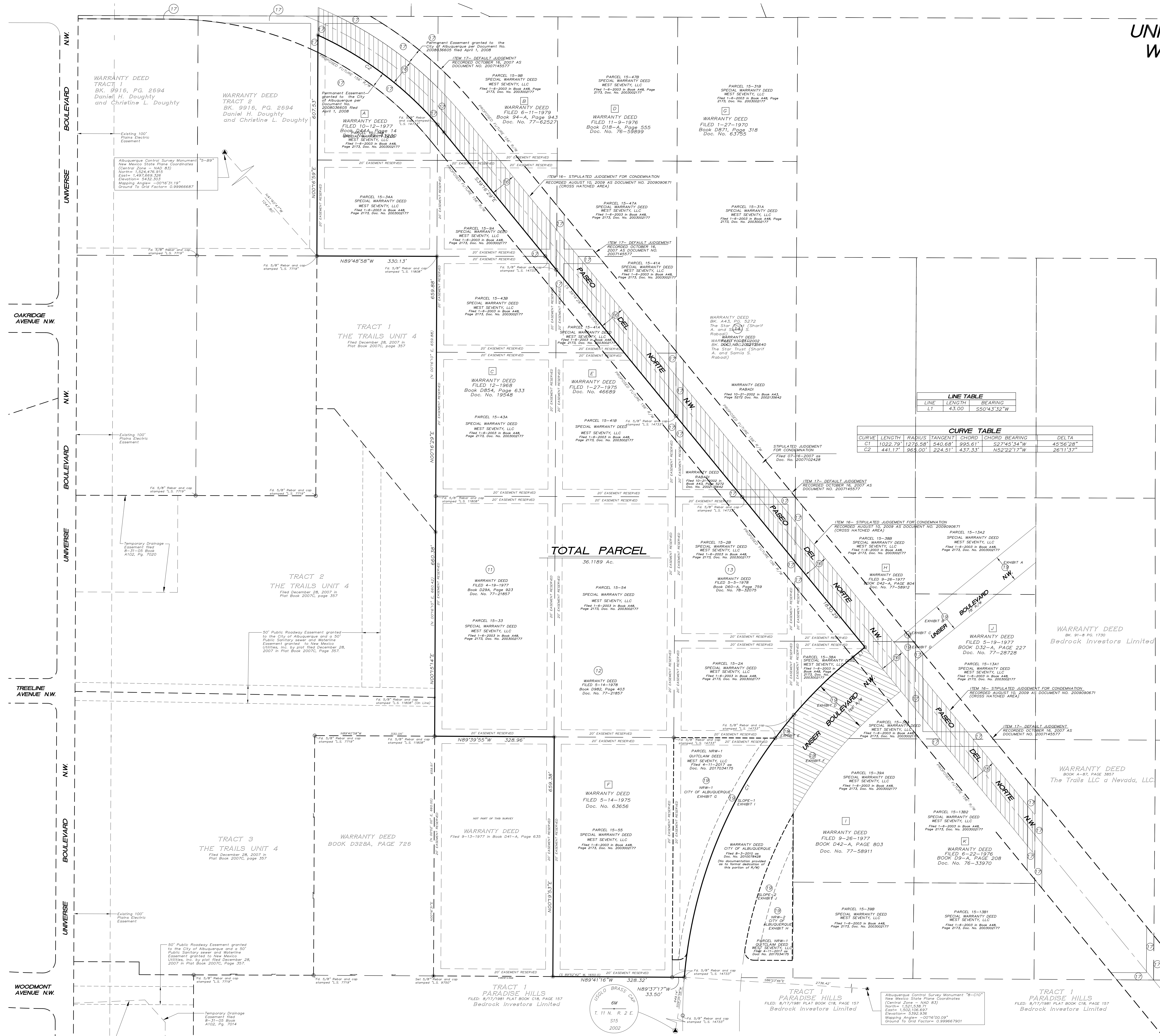


TOPOGRAPHIC AND BOUNDARY SURVEY OF  
**UNPLATTED LANDS OF  
 WEST SEVENTY, LLC**

SITUATE WITHIN  
 THE TOWN OF ALAMEDA GRANT  
 IN  
 PROJECTED SECTION 15  
 TOWNSHIP 11 NORTH, RANGE 2 EAST  
 NEW MEXICO PRINCIPAL MERIDIAN  
 CITY OF ALBUQUERQUE  
 BERNALILLO COUNTY, NEW MEXICO  
 MAY, 2017

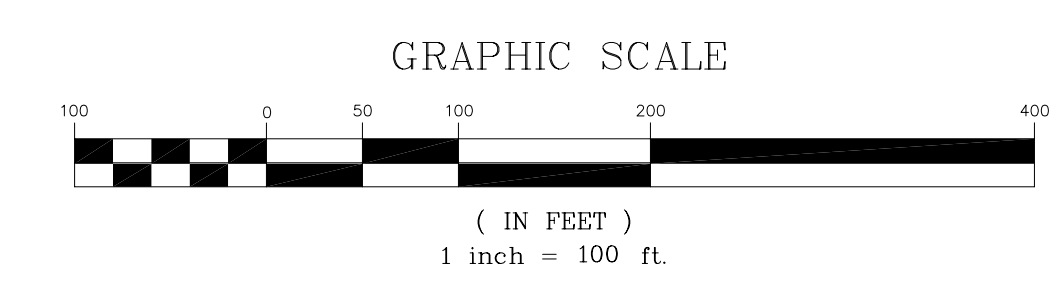


**LINE TABLE**

LINE	LENGTH	BEARING
LT	43.00	S50°43'32"W

**CURVE TABLE**

CURVE	LENGTH	RADIUS	TANGENT	CHORD	CHORD BEARING	DELTA
C1	1022.791	1275.581	540.651	993.611	S27°45'34"W	45°56'28"
C2	441.171	965.001	224.511	437.331	N52°22'17"W	26°11'32"



P:\Robbie\170229\dwg\170229\_BOUNDARY\_SHT2.dwg

170229\_BOUNDARY\_SHT2.DWG