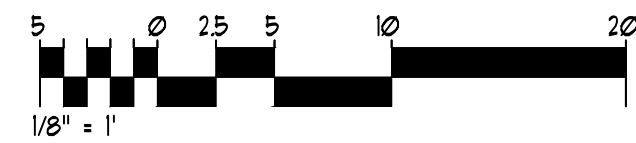
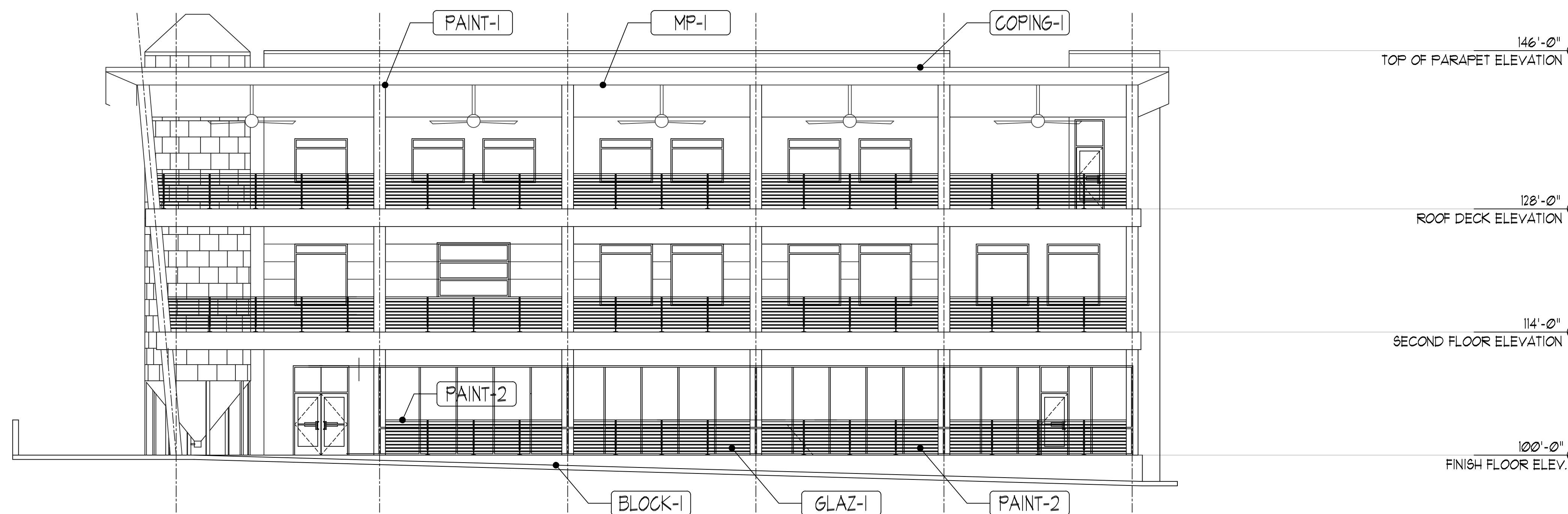


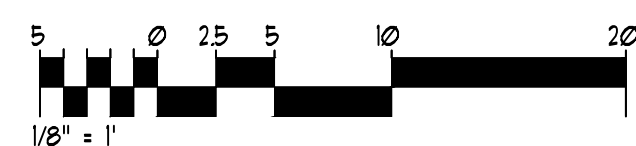
2 PRELIMINARY EASTERN ELEVATION



1 xxx xxx



3 PRELIMINARY NORTHERN ELEVATION



1 xxx xxx

EXTERIOR MATERIALS		REVISION
COPING-1	KYNAR 500 PREFINISHED 24 GA. METAL COPING COLOR = SILVER	
PAINT-1	EXTERIOR PAINT(DECORATIVE ELEMENTS/AWNING STEEL/STAIRS) COLOR = SILVER	
PAINT-2	EXTERIOR PAINT(RAILING) COLOR = GREY	
AWNING-1	EXTERIOR STEEL AWNING	
GLAZ-1	ALUMINUM STOREFRONT SYSTEM, SILVER KAUNEER TRI-FAB 451T THERMALLY BROKEN SILVER ANNO. W/ 1" INSULATED LOW 'E" GLAZING UNITS	
SIGN-1	INDIVIDUAL LETTER SIGNAGE w/ INTERNAL ILLUMINATION PROVIDE 5/8" FIRE RETARDANT PLY. BACKING AT SIGN AREA	
BACKING	5/8" FIRE RETARDANT TREATED PLYWOOD SIGN BACKING SUBSTRATE LOCATION	
J-BOX	EXTERIOR SURFACE MOUNT "J" BOX LOCATION AS INDICATED PROVIDE TEMP. COVER PLATE. ROUTE 1-1/2" CONDUIT FROM J-BOX LOCATION TO TENANTS PANEL LOCATION.	
LIGHT-1	EXTERIOR DECORATIVE WALL SCONCE LIGHT FIXTURE, RE: ELECTRICAL DRAWINGS FOR INFO	
LIGHT-2	EXTERIOR WALL PACK LIGHT FIXTURE, RE: ELECTRICAL DRAWINGS FOR INFO	
HMD-1	EXTERIOR HOLLOW METAL DOOR AND FRAME, COLOR: PAINT TO MATCH ADJACENT STUCCO	
MP-1	EXTERIOR METAL PANEL SYSTEM 24" PANEL WIDTH, COLOR: GREY	
BLOCK-1	EXTERIOR SPLIT FACED CMU WAINSCOT - PAINTED FINISH	
TANK-1	EXTERIOR GRAIN SILO - GALVANIZED FINISH	

NOTE: ALL EXTERIOR MOUNTED GEAR SHALL BE PAINTED TO MATCH ADJACENT EXTERIOR FINISH COLOR.

**MODULUS ARCHITECTS**  
100 SUN AVE. N.W. SUITE 305  
ALBUQUERQUE, NEW MEXICO 87109  
PHONE (505) 338-1499 FAX (505) 338-1498



PROJECT TITLE  
BLDG.-PROJECT  
NIC OF 1.25 FRONTAGE RD AND VENICE AVE  
ALBUQUERQUE  
PROJECT MANAGER  
STEPHEN DUNBAR, AIA  
JOB NO.  
DRAWN BY:  
S-MAN  
SHEET TITLE  
EXTERIOR ELEVATIONS

DATE:  
8/04/2017  
SCALE:  
1/8" = 1'-0"  
sheet:  
A4.0  
of