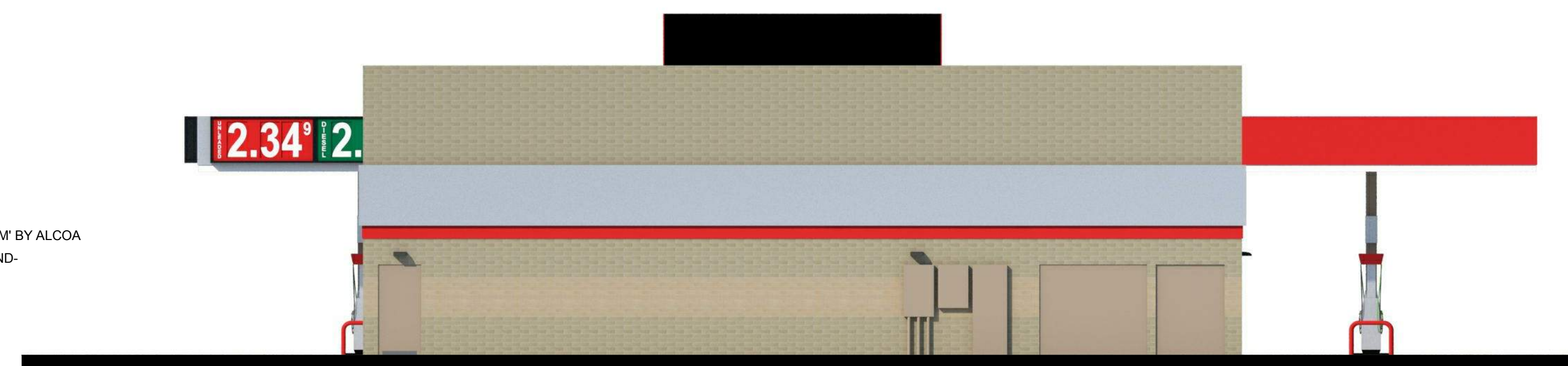


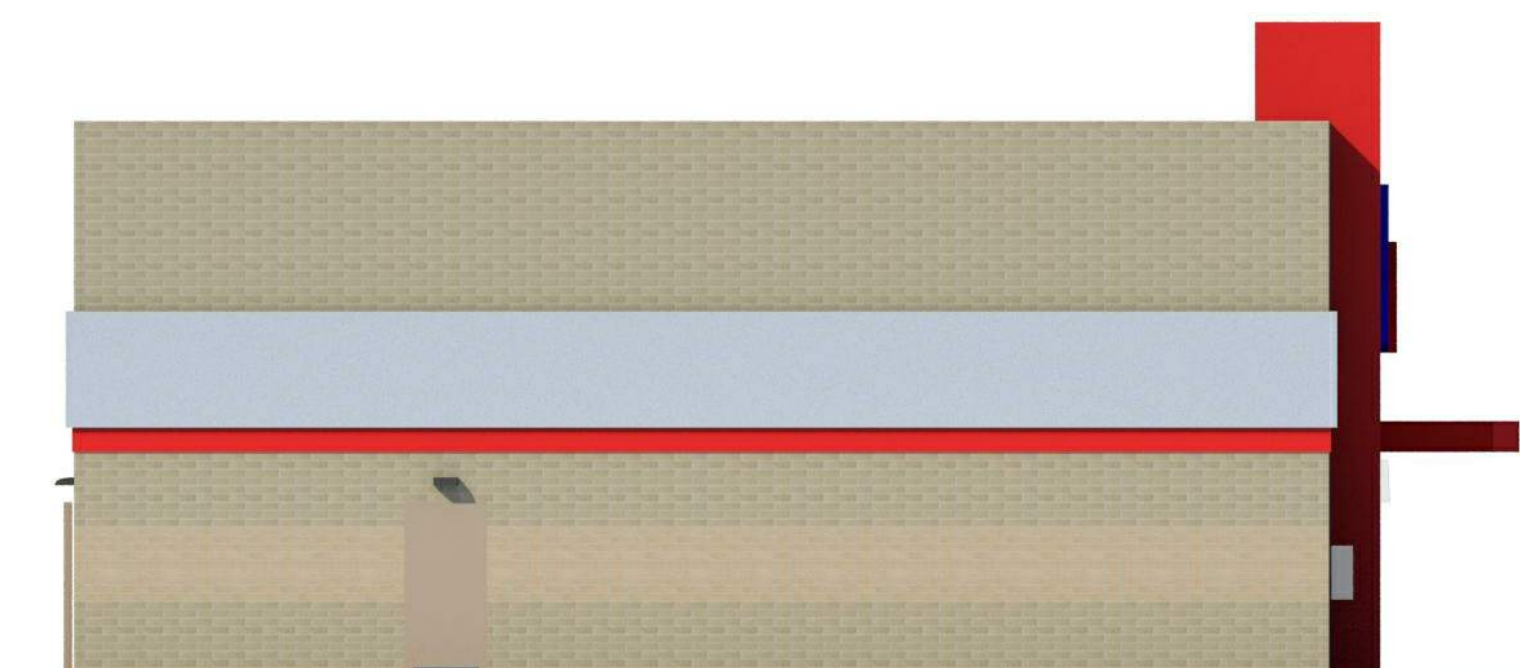


1 ELEVATION- FRONT (WEST)

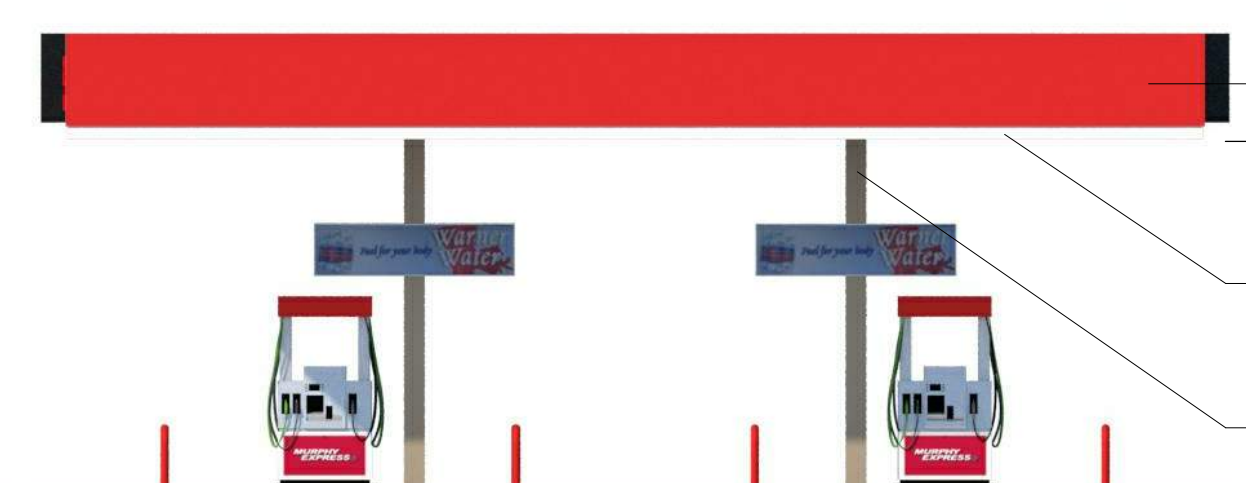
- CHANNEL LETTERS
- T.O. FASCIA  
18'-9"
- T.O. ACCENT BAND  
15'-0"
- ACM FASCIA- 'BRUSHED ALUMINUM' BY ALCOA
- PREFINISHED METAL ACCENT BAND-  
'PURE WHITE' SW #7005
- CANOPY COLUMNS- PAINTED  
'DORMER BROWN' SW #7521
- FIN. FLR. ELEVATION  
0'-0"



2 ELEVATION- REAR (EAST)



4 ELEVATION- LEFT (NORTH)

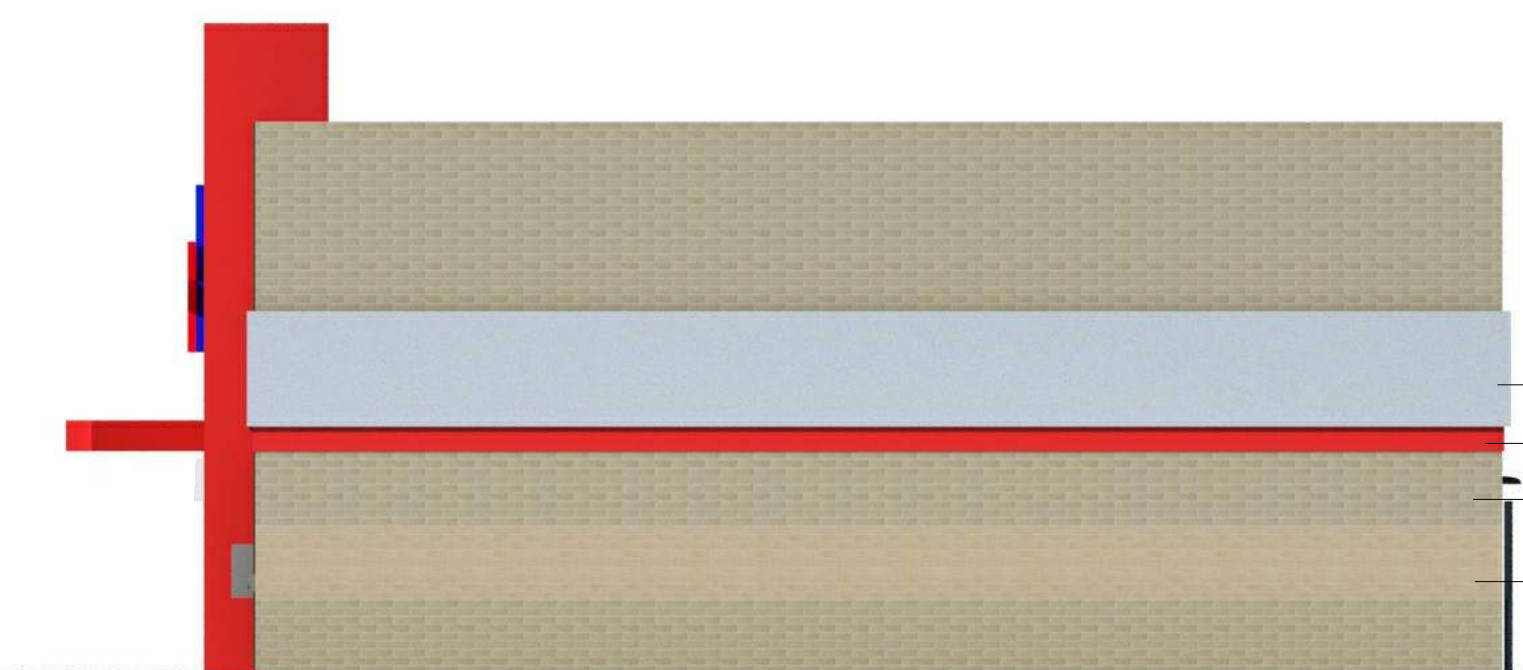
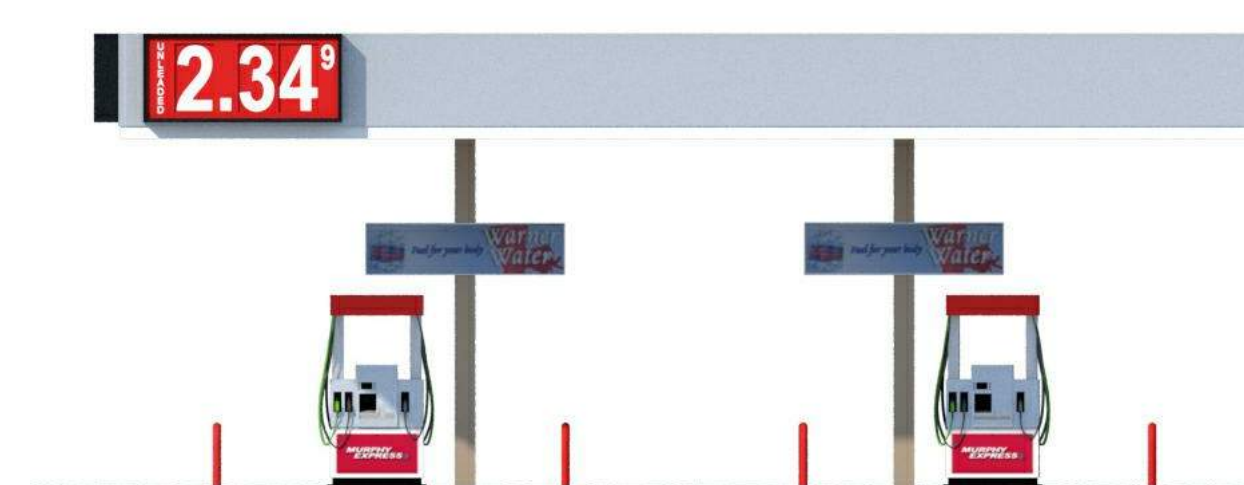


3 ELEVATION- RIGHT (SOUTH)

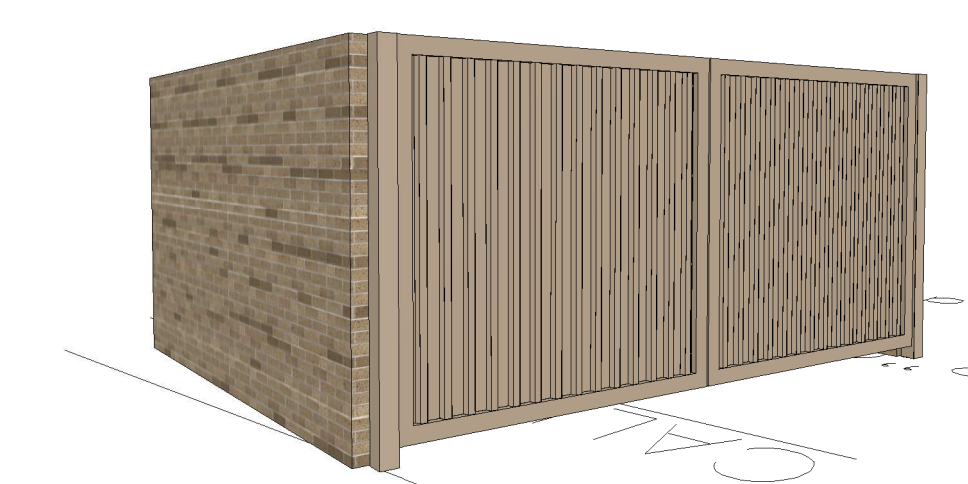
- T.O. STRUCTURE  
26'-0"
- T.O. MASONRY  
22'-8"
- T.O. FASCIA  
18'-9"
- ACM FASCIA- 'PROGRAM RED' BY ALCOA
- B.O. ACCENT BAND  
14'-6"
- ACM FASCIA- 'BRUSHED ALUMINUM' BY ALCOA
- ACM FASCIA- 'PROGRAM RED' BY ALCOA
- PREFINISHED METAL ACCENT BAND-  
'PURE WHITE' SW #7005
- STRUCTURAL BRICK- 'TUMBLEWEED'  
BY INTERSTATE BRICK
- CANOPY COLUMNS- PAINTED 'DORMER  
BROWN' SW #7521
- FIN. FLR. ELEVATION  
0'-0"



5 ELEVATION- FRONT (NO CANOPY)

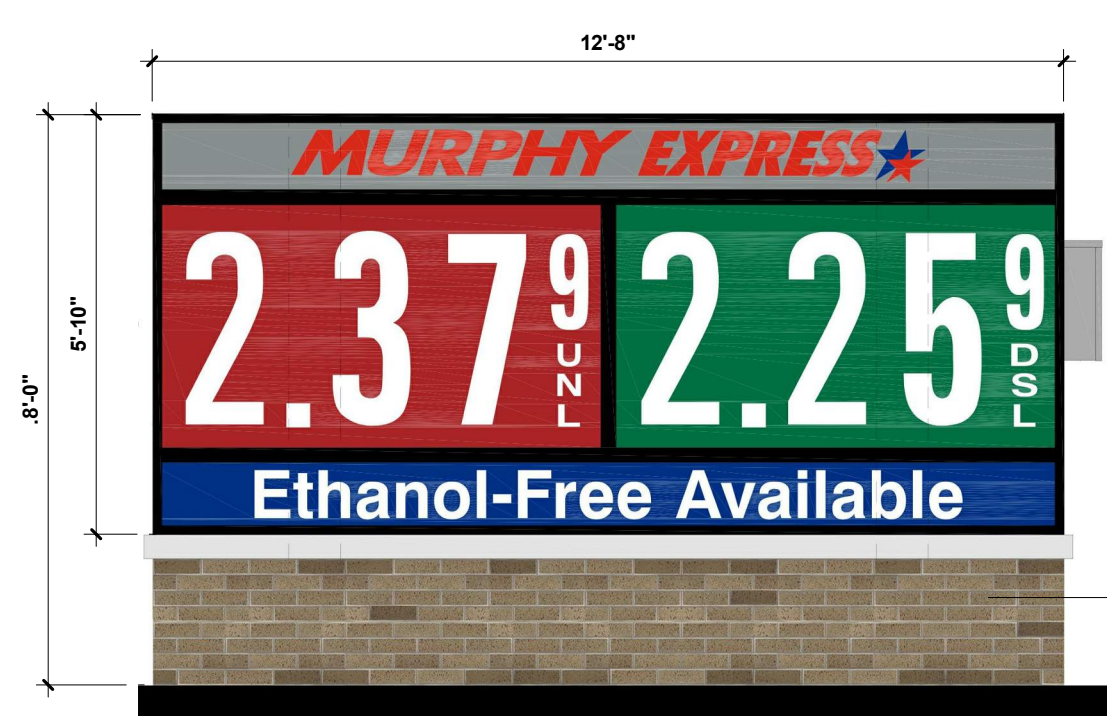


- T.O. MASONRY  
22'-8"
- ACM FASCIA- 'BRUSHED ALUMINUM' BY ALCOA
- ACM FASCIA- 'PROGRAM RED' BY ALCOA
- STRUCTURAL BRICK- 'TUMBLEWEED'  
BY INTERSTATE BRICK
- STRUCTURAL BRICK- 'DESERT SAND' BY  
INTERSTATE BRICK
- FIN. FLR. ELEVATION  
0'-0"



8'-0" TALL WHOLE BRICK 'TUMBLEWEED' BY INTERSTATE BRICK, WITH METAL GATE BY FMS PAINTED 'DORMER BROWN' SW #7521

6 TRASH ENCLOSURE



7 MONUMENT SIGN

SIGN	QTY.	HEIGHT	WIDTH	AREA (S.F.)	TOTAL S.F.
MURPHY EXPRESS BUILDING LOGO SIGN	1		GRAPHIC AREA	24.00	24.00
MURPHY STAR BUILDING LOGO SIGN	1		GRAPHIC AREA	53.30	53.30
MURPHY EXPRESS CANOPY LOGO SIGN	2		GRAPHIC AREA	64.21	128.42
MEDIUM CANOPY PRICE SIGN	5	43.125"	97.00"	29.05	145.25
ISLAND SPANNER	4	25.19"	97.19"	17.00	68.00
MONUMENT SIGN	1	70.00"	152.00"	73.89	73.89
				TOTAL SIGNAGE:	492.86



① AMERICAN ROAD VIEW 01  
1/2" = 1'-0"



② AMERICAN ROAD VIEW 02  
1/2" = 1'-0"