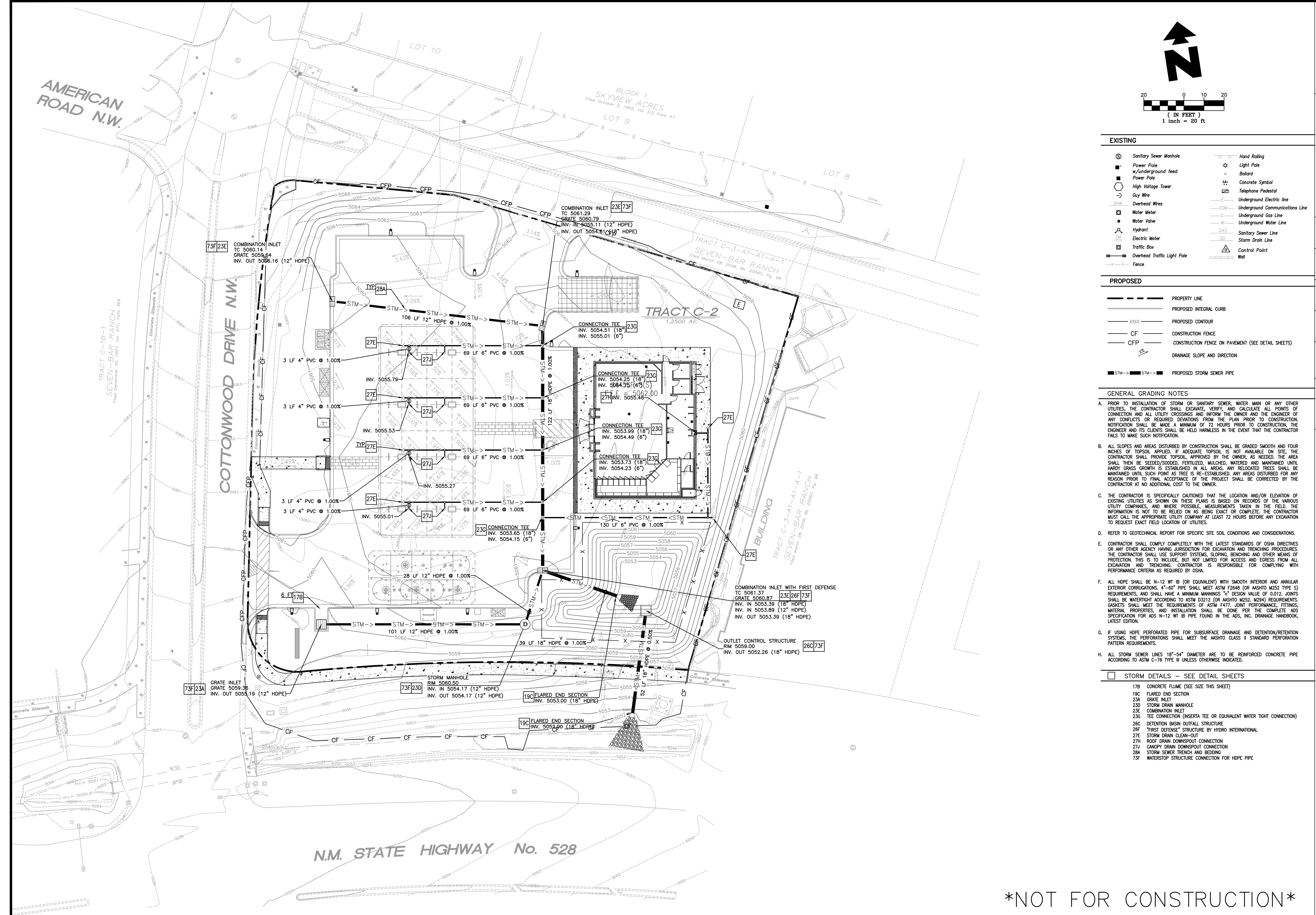
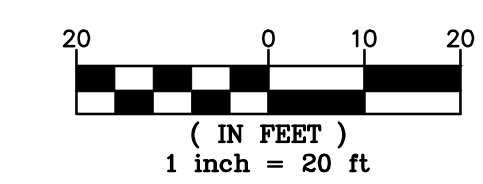
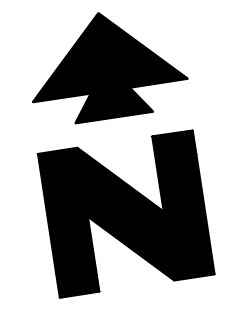


AMERICAN ROAD N.W.

TRACT C-1B-1  
SEVEN-BAR RANCH  
Filed December 30, 1997, Vol. 97C, Folio 389

COTTONWOOD DRIVE N.W.

N.M. STATE HIGHWAY No. 528



**EXISTING**

○ Sanitary Sewer Manhole	○ Hand Railing
■ Power Pole w/Underground feed	☆ Light Pole
□ Power Pole	● Ballard
⬢ High Voltage Tower	⊕ Concrete Symbol
→ Guy Wire	⊞ Telephone Pedestal
— Overhead Wires	— Underground Electric Line
⊞ Water Meter	— Underground Communications Line
⊞ Water Valve	— Underground Gas Line
⊞ Hydrant	— Underground Water Line
⊞ Electric Meter	— SAS
⊞ Traffic Box	— Storm Drain Line
⊞ Overhead Traffic Light Pole	⊞ Control Point
— Fence	— Wall

**PROPOSED**

—	PROPERTY LINE
—	PROPOSED INTEGRAL CURB
—	PROPOSED CONTOUR
—	CONSTRUCTION FENCE
—	CONSTRUCTION FENCE ON PAVEMENT (SEE DETAIL SHEETS)
—	DRAINAGE SLOPE AND DIRECTION
—	PROPOSED STORM SEWER PIPE

- GENERAL GRADING NOTES**
- PRIOR TO INSTALLATION OF STORM OR SANITARY SEWER, WATER MAIN OR ANY OTHER UTILITIES, THE CONTRACTOR SHALL EXCAVATE, VERIFY, AND CALCULATE ALL POINTS OF CONNECTION AND ALL UTILITY CROSSINGS AND INFORM THE OWNER AND THE ENGINEER OF ANY CONFLICTS OR REQUIRED DEVIATIONS FROM THE PLAN PRIOR TO CONSTRUCTION. NOTIFICATION SHALL BE MADE A MINIMUM OF 72 HOURS PRIOR TO CONSTRUCTION, THE ENGINEER AND ITS CLIENTS SHALL BE HELD HARMLESS IN THE EVENT THAT THE CONTRACTOR FAILS TO MAKE SUCH NOTIFICATION.
  - ALL SLOPES AND AREAS DISTURBED BY CONSTRUCTION SHALL BE GRADED SMOOTH AND FOUR INCHES OF TOPSOIL APPLIED. IF ADEQUATE TOPSOIL IS NOT AVAILABLE ON SITE, THE CONTRACTOR SHALL PROVIDE TOPSOIL APPROVED BY THE OWNER, AS NEEDED. THE AREA SHALL THEN BE SEED/SODDED, FERTILIZED, MULCHED, WATERED AND MAINTAINED UNTIL HARDY GRASS GROWTH IS ESTABLISHED IN ALL AREAS. ANY RELOCATED TREES SHALL BE MAINTAINED UNTIL SUCH POINT AS TREE IS RE-ESTABLISHED. ANY AREAS DISTURBED FOR ANY REASON PRIOR TO FINAL ACCEPTANCE OF THE PROJECT SHALL BE CORRECTED BY THE CONTRACTOR AT NO ADDITIONAL COST TO THE OWNER.
  - THE CONTRACTOR IS SPECIFICALLY CAUTIONED THAT THE LOCATION AND/OR ELEVATION OF EXISTING UTILITIES AS SHOWN ON THESE PLANS IS BASED ON RECORDS OF THE VARIOUS UTILITY COMPANIES, AND WHERE POSSIBLE, MEASUREMENTS TAKEN IN THE FIELD. THIS INFORMATION IS NOT TO BE RELIED ON AS BEING EXACT OR COMPLETE. THE CONTRACTOR MUST CALL THE APPROPRIATE UTILITY COMPANY AT LEAST 72 HOURS BEFORE ANY EXCAVATION TO REQUEST EXACT FIELD LOCATION OF UTILITIES.
  - REFER TO GEOTECHNICAL REPORT FOR SPECIFIC SITE SOIL CONDITIONS AND CONSIDERATIONS.
  - CONTRACTOR SHALL COMPLY COMPLETELY WITH THE LATEST STANDARDS OF OSHA DIRECTIVES OR ANY OTHER AGENCY HAVING JURISDICTION FOR EXCAVATION AND TRENCHING PROCEDURES. THE CONTRACTOR SHALL USE SHIELDING SYSTEMS, SLOPING, BRACING AND OTHER MEANS OF PROTECTION. THIS IS TO INCLUDE, BUT NOT LIMITED TO ACCESS AND EGRESS FROM ALL EXCAVATION AND TRENCHING. CONTRACTOR IS RESPONSIBLE FOR COMPLYING WITH PERFORMANCE CRITERIA AS REQUIRED BY OSHA.
  - ALL HDPE SHALL BE N-12 WT IB (OR EQUIVALENT) WITH SMOOTH INTERIOR AND ANNULAR EXTERIOR CORRUGATIONS. 4"-60" PIPE SHALL MEET ASTM F2648 (OR AASHTO M252 TYPE S) REQUIREMENTS, AND SHALL HAVE A MINIMUM MANNING'S "N" DESIGN VALUE OF 0.012. JOINTS SHALL BE WATER-TIGHT ACCORDING TO ASTM D3212 (OR AASHTO M252, M294) REQUIREMENTS. GASKETS SHALL MEET THE REQUIREMENTS OF ASTM F477, JOINT PERFORMANCE, FITTINGS, MATERIAL PROPERTIES, AND INSTALLATION SHALL BE DONE PER THE COMPLETE ADS SPECIFICATION FOR ADS N-12 WT IB PIPE FOUND IN THE ADS, INC. DRAINAGE HANDBOOK, LATEST EDITION.
  - IF USING HDPE PERFORATED PIPE FOR SUBSURFACE DRAINAGE AND DETENTION/RETENTION SYSTEMS, THE PERFORATIONS SHALL MEET THE AASHTO CLASS II STANDARD PERFORMANCE PATTERN REQUIREMENTS.
  - ALL STORM SEWER LINES 18"-54" DIAMETER ARE TO BE REINFORCED CONCRETE PIPE ACCORDING TO ASTM C-76 TYPE III UNLESS OTHERWISE INDICATED.

**STORM DETAILS - SEE DETAIL SHEETS**

17B	CONCRETE FLUME (SEE SIZE THIS SHEET)
19C	FLARED END SECTION
23A	GRATE INLET
23D	STORM DRAIN MANHOLE
23E	COMBINATION INLET
23G	TEE CONNECTION (INSERTA TEE OR EQUIVALENT WATER TIGHT CONNECTION)
26C	DETENTION BASIN OUTFALL STRUCTURE
26F	"FIRST DEFENSE" STRUCTURE BY HYDRO INTERNATIONAL
27E	STORM DRAIN CLEAN-OUT
27H	ROOF DRAIN DOWNSPOUT CONNECTION
27J	CANOPY DRAIN DOWNSPOUT CONNECTION
28A	STORM SEWER TRENCH AND BEDDING
73F	WATERSTOP STRUCTURE CONNECTION FOR HDPE PIPE

SHEET NO.  
**C-3.1**

CONCEPTUAL STORM PLAN  
MURPHY EXPRESS  
3751 HIGHWAY 528 NW  
ALBUQUERQUE NEW MEXICO

**GreenbergFarrow**  
1430 W. PEACHTREE ST., NW SUITE 200  
ATLANTA, GA 30309  
TEL: (404) 525-8800  
FAX: (404) 525-9700  
DWG NAME: ALBUQUERQUE\_NM  
JOB NO.: 20160897.0

MURPHY OIL USA, INC.  
MURPHY USA  
200 PEACH STREET  
EL DORADO, AR 71730

\*NOT FOR CONSTRUCTION\*