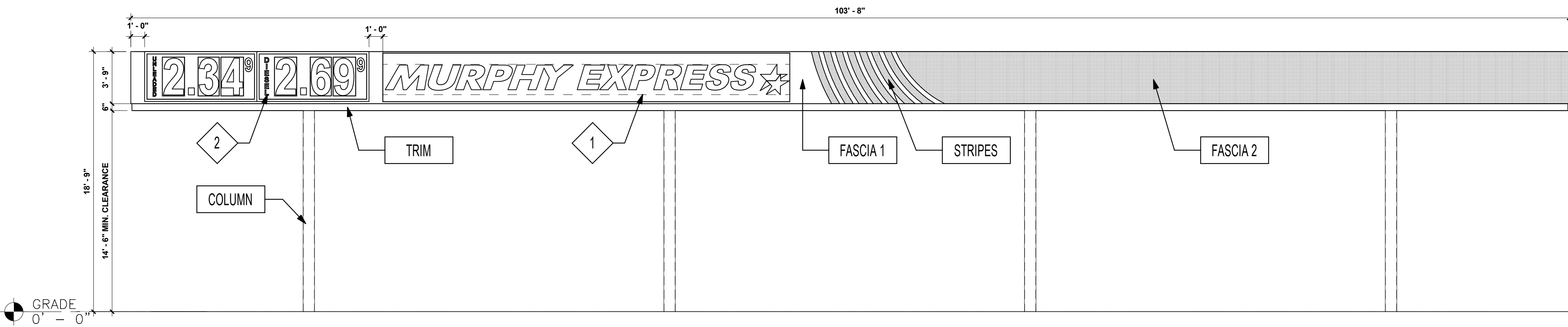
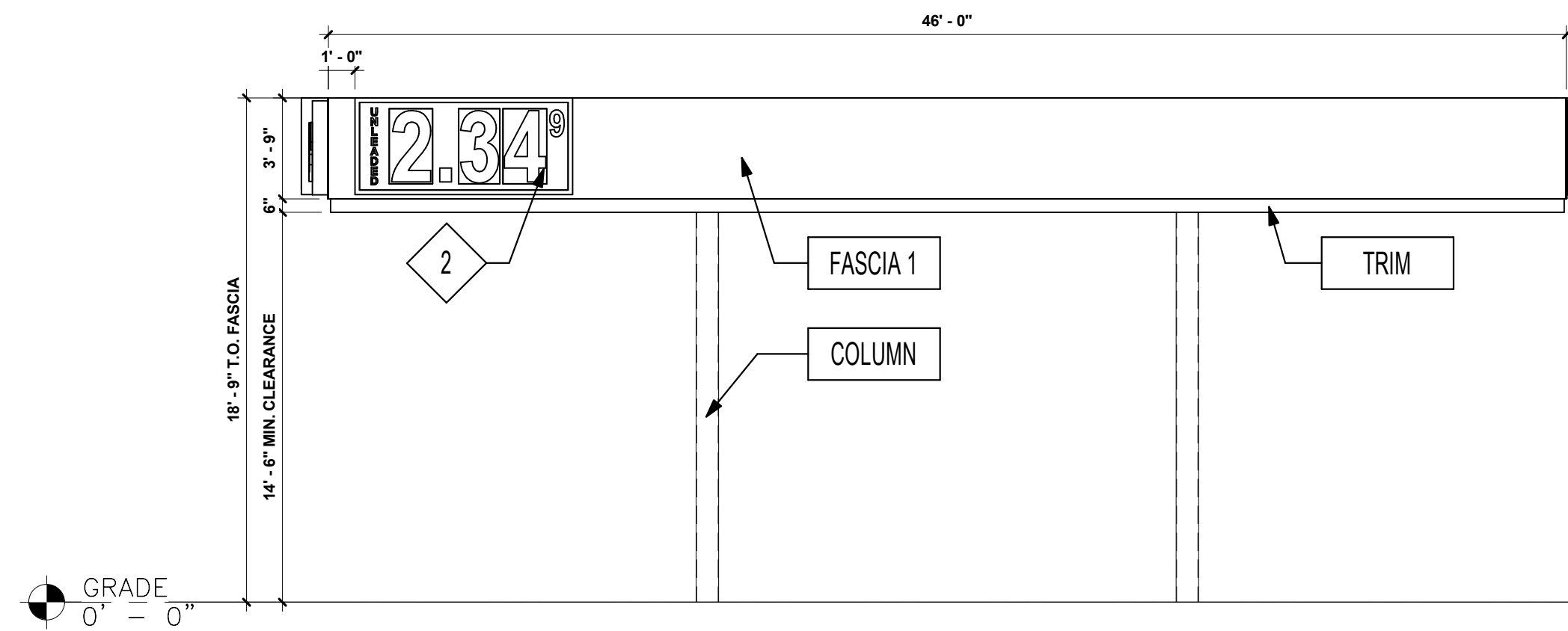


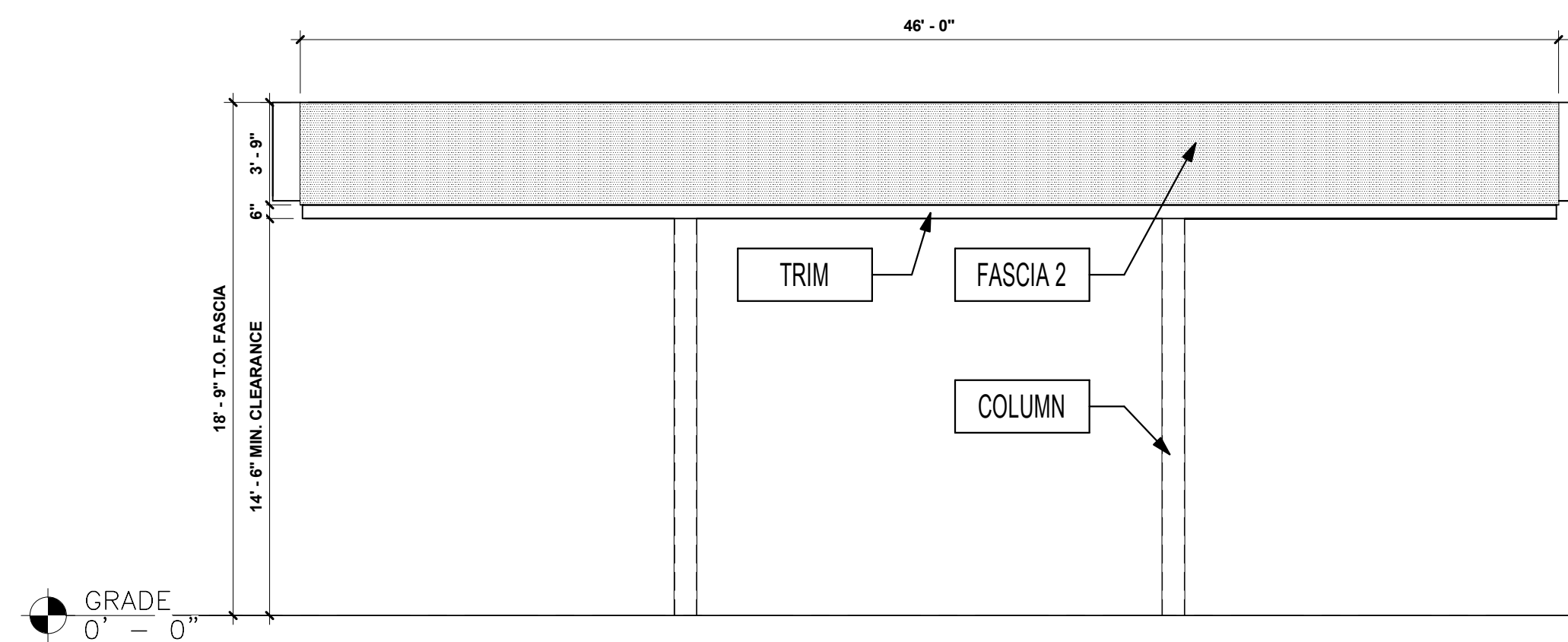
1 FRONT ELEVATION (WEST)
3/16" = 1'-0"



2 REAR ELEVATION (EAST)
3/16" = 1'-0"



3 RIGHT ELEVATION (SOUTH)
3/16" = 1'-0"



4 LEFT ELEVATION (NORTH)
3/16" = 1'-0"

KEYED NOTES

- 1 MURPHY LOGO SIGN FURNISHED BY FMS INSTALLED BY FMS. SIGNAGE = 64.21 SQ. FT.
- 2 CANOPY SIGN FURNISHED BY FMS INSTALLED BY OTHERS IN THE FIELD. CANOPY DESIGNED TO SUPPORT SIGNAGE AT ALL CORNERS

FINISH SCHEDULE

ITEM	DESCRIPTION	FINISH	INSTALLATION
FASCIA 1	ACM (ALUMINUM COMPOSITE MATERIAL)	ACM FASCIA "BRUSHED ALUMINUM"	FURNISHED & INSTALLED BY FMS
FASCIA 2	ACM (ALUMINUM COMPOSITE MATERIAL)	ACM FASCIA "PROGRAM RED" BY ALCOA	FURNISHED & INSTALLED BY FMS
TRIM	20 GA. SHEET METAL	6" HT PRE-FINISHED METAL ACCENT BAND "PURE WHITE" SW #7005	FURNISHED & INSTALLED BY FMS
COLUMN	SEE STRUCTURAL DRAWINGS	PAINTED "DORMER BROWN" SW #7521	FURNISHED & INSTALLED BY FMS PAINTED BY SITE CONTRACTOR
STUBCOLUMNS	SEE STRUCTURAL DRAWINGS	PAINTED "DORMER BROWN" SW #7521	FURNISHED & INSTALLED BY FMS PAINTED BY SITE CONTRACTOR

PROFESSIONAL SEAL

PROFESSIONAL IN CHARGE
FRANK GRIECO

PROJECT MANAGER
MUGDHA CHAWATHE

QUALITY CONTROL
CHRIS CERBO

DRAWN BY
DP

PROJECT NAME



MURPHY OIL FUEL FACILITY CANOPY

NEQ HWY 528 (ALAMEDA) & COTTONWOOD DRIVE ALBUQUERQUE NM 877114

PROJECT NUMBER
20160897.0

SHEET TITLE

ELEVATIONS

SHEET NUMBER

E2